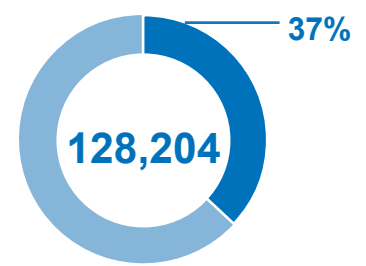
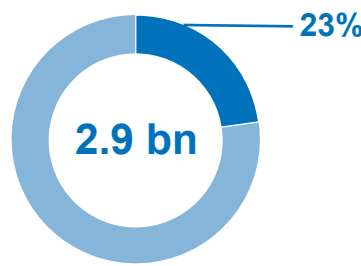
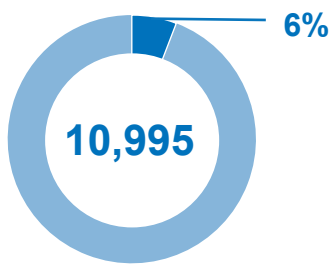




Overview

The response seeks to explore opportunities to transition from in-kind to cash-based assistance, to the extent possible. The injection of cash, through unconditional multi-purpose, and conditional cash-based interventions will have multiplier effects on food security, social cohesion, reduction of aid dependency, and productive engagement of the youth, among others. The established reference Minimum Expenditure Basket (MEB) tool will ultimately support the cost efficiency and cost effectiveness, and pave the way for coherent multi-purpose cash programming and delivery. It will be a critical source of information in determining the level of assistance to refugees (or its transfer value) and in establishing price lines for project design, in harmony with the objectives of a given programme, the vulnerability of the target group and gap analysis at a settlement level. Partners continue efforts to establish a common platform for cash transfers.

Key indicators



Objective: Financial inclusion and access to financial services promoted

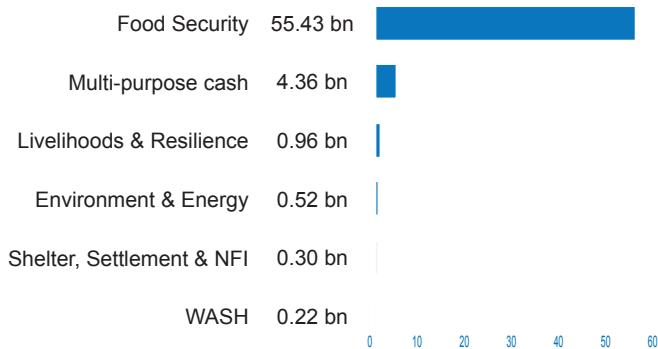
Indicator	Actual	Target/Standard ('19)	Actual against annual target
Households enrolled in bank account or mobile money			
- Congolese and other refugees	6,249	111,104	6%
- South Sudanese refugees	23,209	176,239	13%
- Burundian refugees	0	1,769	0%
Financial literacy trainings			
- Congolese and other refugees	1,998	93,326	2%
- South Sudanese refugees	10,570	168,554	6%
- Burundian refugees	0	1,769	0%
- Host community	1,067	3,310	32%

Objective: Access to cash and voucher assistance for basic needs expanded

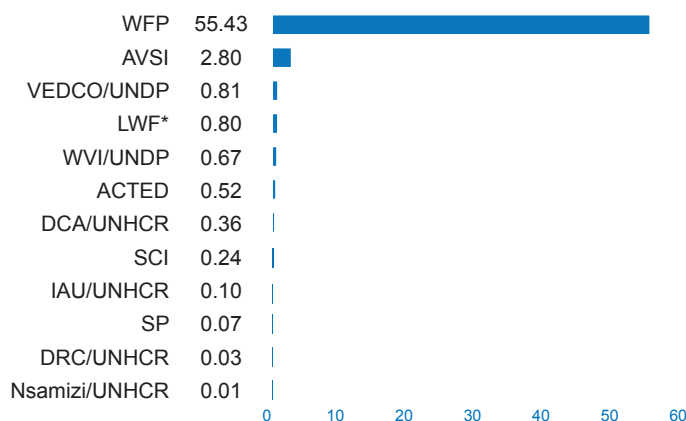
Indicator	Actual	Target/Standard ('19)	Actual against annual target
Households receiving multi-purpose cash-based assistance			
- Congolese and other refugees	6,998	29,580	24%
- South Sudanese refugees	4,002	167,001	2%
- Burundian refugees	0	1,816	0%

Cross-sectoral analysis of all cash-based interventions (amounts in UGX)

Amount of cash transfers by sector (in billions)



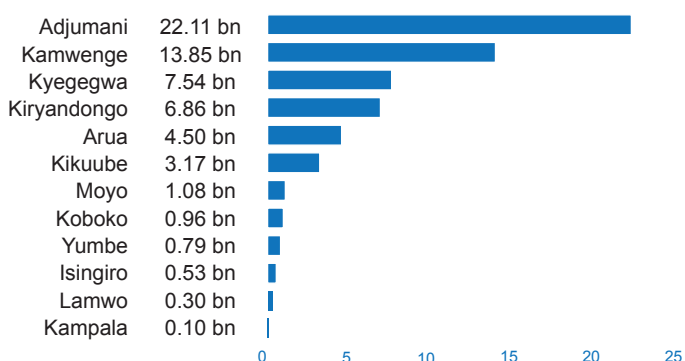
Amount of cash transfers by partner (in billions)



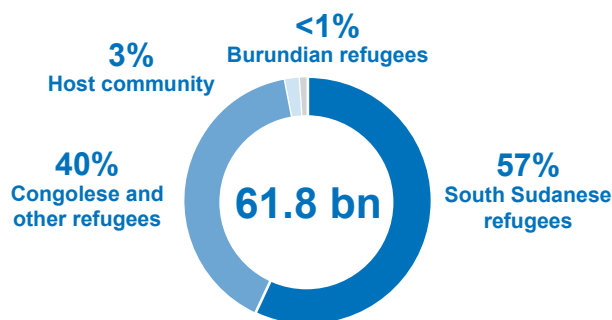
Note: for Livelihoods & Resilience the value of CBI interventions is only based on cash-for-work, as amounts for households who received productive assets through cash are not available. Host community interventions are included in all cases. Amounts in USD were converted using the average UN exchange rate (3,713).

*LWF is implementing partner of UNHCR, IOM and UNFPA

Amount of cash transfers by district (in billions)



Cash transfers by beneficiary type



Operational presence

