

UNHCR Uganda Operational Update



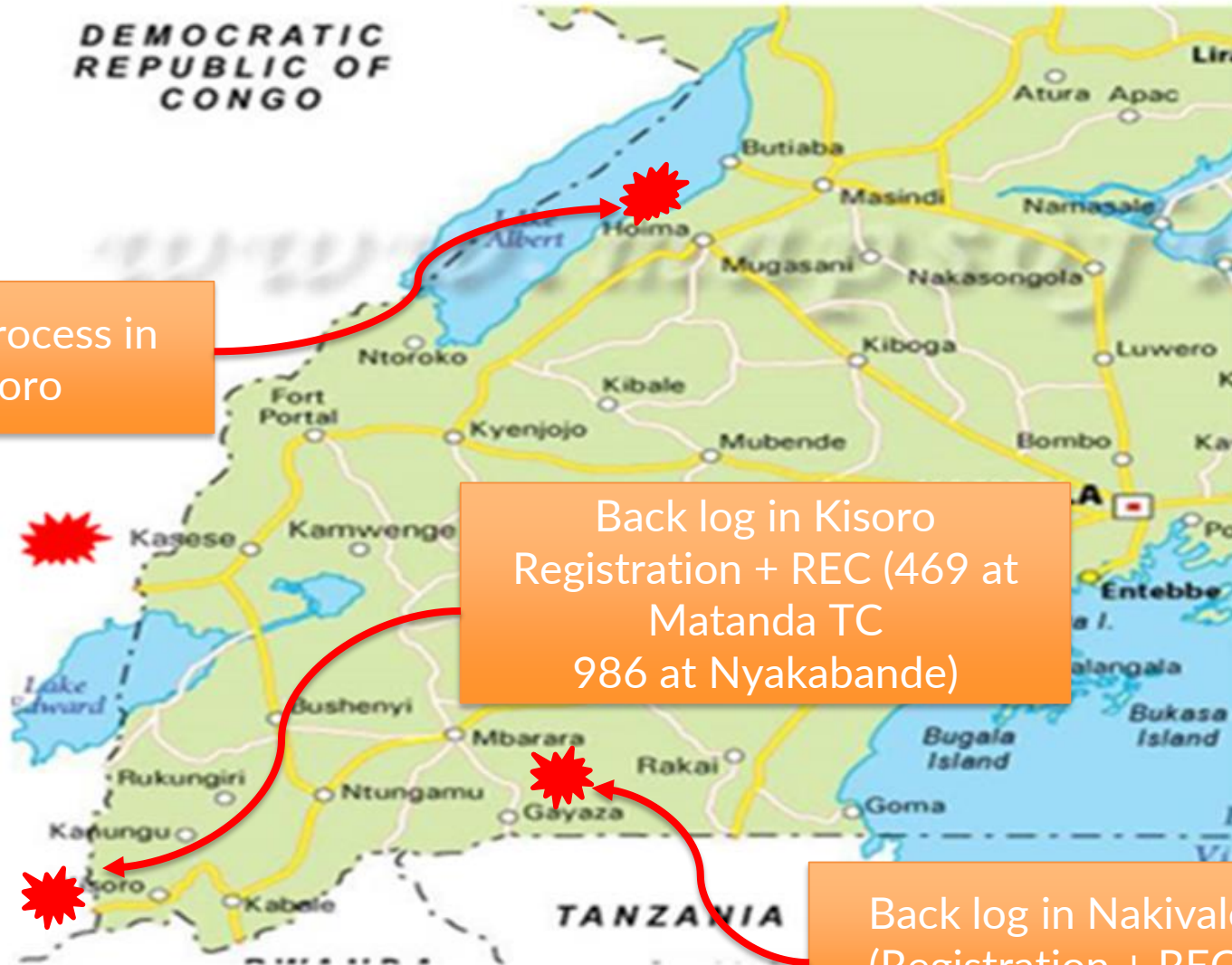
Challenges in the Field: Water bowser and UNHCR trucks stuck at Vurra Corps, along the main road to Yoro Base camp in Rhino camp Refugee settlement.

*Philippe Creppy, Asst Rep-Operations
UNHCR Uganda
04 October 2019.*



Agenda

- 1. Welcome remarks (UNHCR, OPM, MoLG)**
- 2. Situation update (UNHCR, WFP)**
- 3. RRP and Contingency Plan Update (UNHCR)**
- 4. African statistics Day (UBOS)**
- 5. Update from CRRF Secretariat**
- 6. Update on Semi-permanent staff accommodation**
- 7. AoB**



Screening process in Ssebagoro

Back log in Kisoro
Registration + REC (469 at Matanda TC
986 at Nyakabande)

Back log in Nakivale
(Registration + REC)

Inter Agency Coordination Meeting.



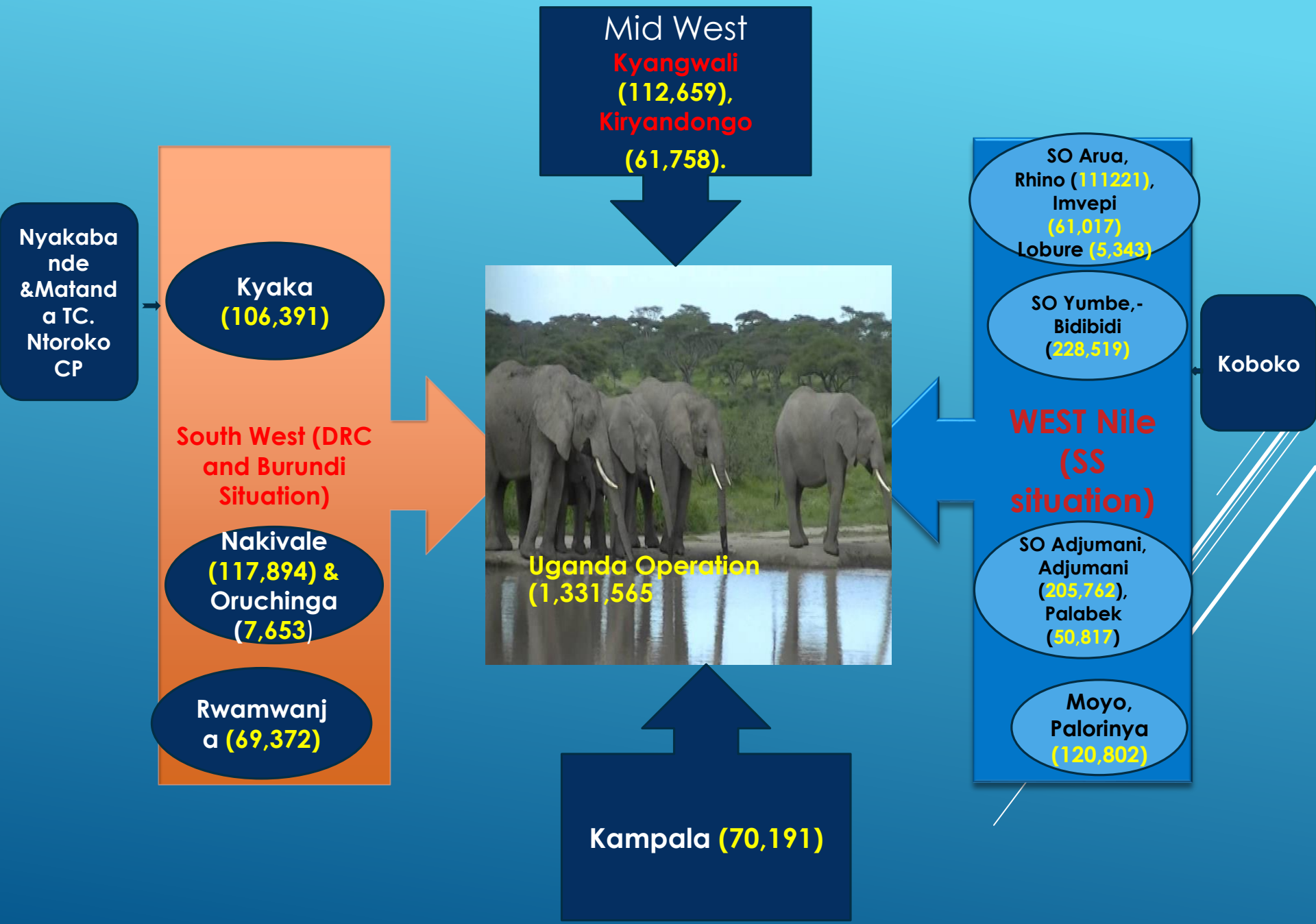
New Developments/Updates

- Congestion at TCs and RCs eg COB 26 September 2019 there were **2581** new arrivals at Nyakabande TC against the capacity of **1525**.- **Stretching of facilities. (Capacity of the new TC is 825 and the old TC is 700, Matanda is 600)**
- **RC capacity in Nakivale is 638, current occupation is 2,440 individuals(4x the capacity)**
- Accumulation of Asylum Seekers at Nyakabande TC- **831** by COB 26 September 2019
- Suspension of receiving and screening of new arrivals at Sebagoro TC by OPM – New arrivals travelling through their own means to OPM office in Kyangwali for screening and registration as Asylum Seekers pending REC sessions. OPM has however sent assurance to resume the screening at the TC.
- More new arrivals being registered as asylum seekers.
- PSN verification is ongoing.
- Commissioning of World Bank’s Development Response to Displacement Impact Projects is pending in three districts (Hoima, Kyegegwa and Kikuube).
- As of 30 September, there are **135** cumulative Cholera cases (suspected and confirmed) – Kyegegwa District – Kyaka II

Main Areas of Focus

- Streamlining the management of new arrivals, timely registration and relocations at the CPs, TCs & RCs. Timely provision of NFIs/CRIs.
- Focus on Environment and exploring energy saving solutions for refugees and host community members.
- Strengthening refugee response preparedness for DRC and SS situations on infrastructures, personnel and other NFI/CRI requirements.
- Together with partners continuously developing sustainable access to clean water for refugees and host community members while minimizing water trucking

UGANDA OPERATION AUGUST 2019 :SOURCE OPM



Operational Direction

**4. Institutionalization
of CBI**

**1. DRC, South Sudan
and Burundi Situation
Management of CRI
and warehouse**

**3. Enhanced Monitoring ,
FRRM, Risk Based
Management,**

**2. Priorities: More
focus on
Environment, energy
education, protection**

**5. CRRF and
preparation for the
global refugee forum**



DRC Situation

- **Ebola threat is continues to be real.** 3191 EVD suspected cases, including 3077 confirmed cases as of 2 October 2019. Among them are 2133 total deaths and 346 suspects that are under investigation.
- Collaborating with the government and other agencies to ensure Ebola preventive measures and case management is in place and functioning. In addition close monitoring and management of AWD.
- Continuous streamlining CBI.
- Majority of movement have been reported in districts close to the border area, with 35% of all tracked movements taking place between **Rutshuru-ville in DRC and Bufumbira in Uganda, and 15% between Beni in DRC and Bukonzo in Uganda**
- **An increase in the rate arrival of Congolese** from 105 in August to 122 in September at Nyakabande TC and 24 in August to 34 currently for Matanda TC.
- Increased refugee arrivals mainly from Masisi, Rutchuru, Kisharu, Nyamilima, Beni, Irumu, Djugu and other places in North and South Kivu regions.
- Isolated cases of abductions, destruction of property and sexual abuse of women by the armed groups and militias is still a major driver for displacement.

Centers of conflicts pushing people to Uganda

- **Ituri province:** interethnic conflict and militias in the territory of:
 - Irumu: south east close to lake Albert
 - Djugu: east close to lake Albert
- **North Kivu province:** Overall, the security situation in North Kivu remains extremely volatile and unpredictable. **Sporadic clashes** between the army (FARDC) and armed groups continue in the interior of Petit Nord, especially in **Rutshuru and Masisi** territories. Militias, ADF-NALU (Allied Democratic Forces)
 - Beni, Lubero: North east
 - Rutshuru: east
 - Masisi: central south
- **South Kivu:** militias, interethnic conflict
 - Area of Uvira, Fizi

South Sudan Situation.

- President Kiir and Machar agreed to form a **transitional government by November 2019**
- However, according to the medias , South Sudan President Salva Kiir has hinted possibilities of forming a government that could **exclude Machar in November, though this contravenes the** revitalized peace deal according to political analysts.
- Civil Society members have declared it will not help the peace process.

Burundi Situation.

- According to medias, fear and intimidation roaming in Burundi for non supporters of the ruling party CNDD-FDD roaming in Burundi ahead of the 2020 Presidential, parliamentary and local elections
- Commissioners have highlighted urgent need to implement measures to prevent the **deterioration of human rights situation** and emphasizes that the situation in Burundi should be followed with utmost vigilance by the international community
- Uganda continue receiving new arrivals from Burundi.

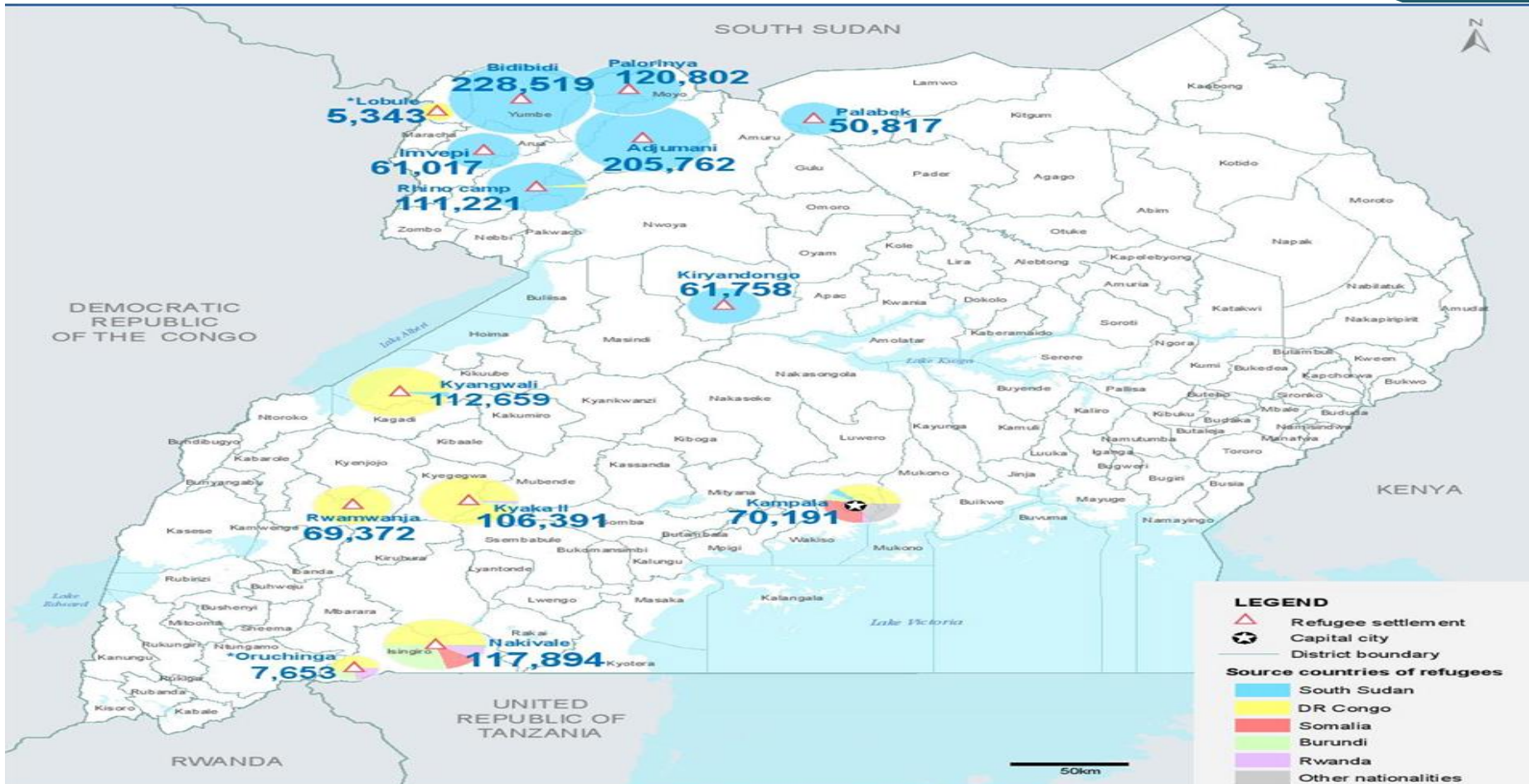
OPM & UNHCR Joint Technical Mission Objectives

1. To assess the absorption capacity of the settlements visited
2. Assess relative preparedness of the settlement to receive new arrivals

Inter Agency Coordination Meeting.



OPM & UNHCR Joint Technical Mission Findings

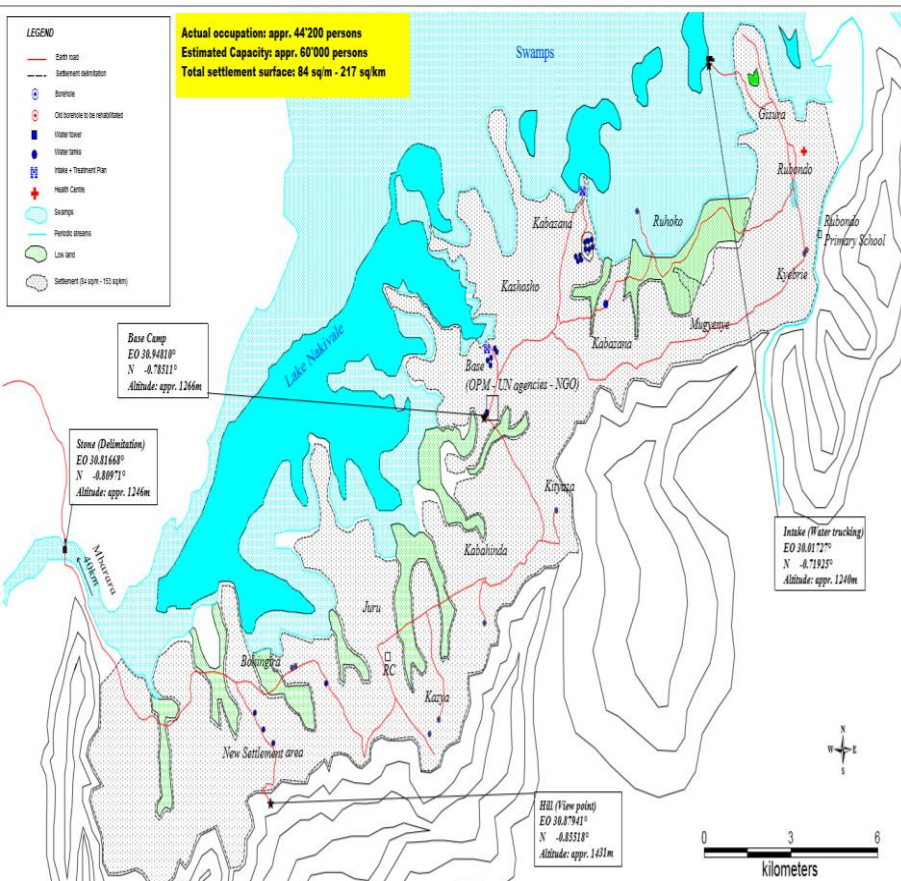


The boundaries and names shown and the designations used on this map do not imply official endorsement or acceptance by the United Nations.

*Oruchinga and Lobule symbols not to scale **Includes 2,166 refugees and asylum seekers in reception centres which are not shown on the map

Population data: proGres (OPM) Author: UNHCR Representation in Uganda Feedback: ugakaimug@unhcr.org For more info, please visit: www.ugandarefugees.org

Nakivale



185 sq KM

Hosting 107,240 refugees

Has 3 sub-zones: Juru, Rubondo, Basecamp

Available vacant land:

100,000 (20,000 Household) if improved settlement approach is considered

Rubondo – 60,000 population

Juru – 40,000 population

Nakivale

Recommendations

- Kabazana reception centre (1060) capacity to be maintained for REC cases
- New reception centre to be set up in Rubondo to handle the prima facie status
- Kabazana reception centre to be use when settling new arrivals for Juru and drop off points constructed in the community.
- Hosting 117,894 refugees

Pending Recommendations

- Development of the settlement masterplan for Rubondo reception centre
- Cost benefit analysis for New Rubondo reception centre Vs expansion of Kabazana.
- WASH to survey the pipeline routes for the new Rubondo area.
- Road conditions need improvements

Oruchinga

- 8 sq KM
- Hosting 7,653 refugees
- Receives 20 new arrivals per month and has **no reception centre**

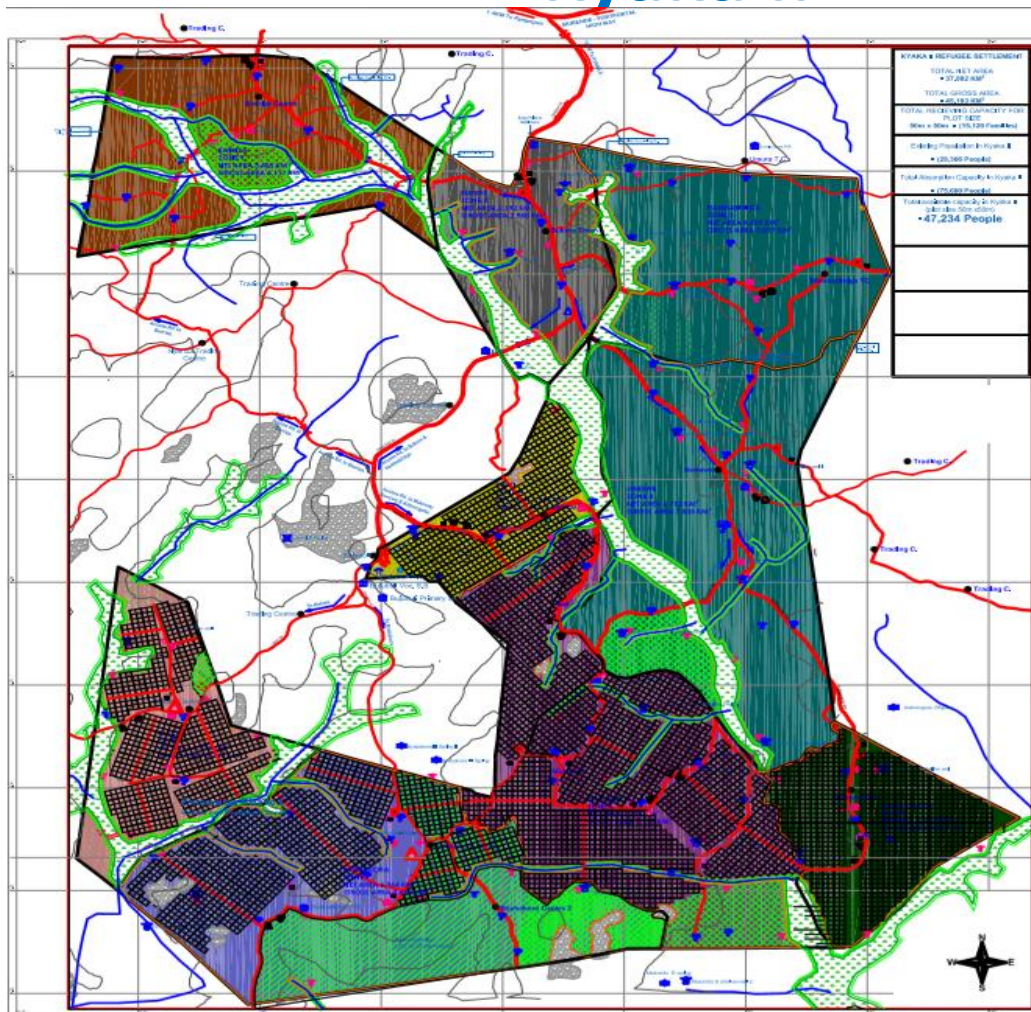
Recommendations

- New reception centre to be set up in Oruchinga with capacity of 100 persons with provision of meals
- Cost benefit analysis for New Rubondo reception centre Vs expansion of Kabazana.

Available vacant land:

5,000 individuals, if improved settlement approach is considered

Kyaka II



Pending recommendation:

- Continue with the settlement of new arrivals in Kyaka II
- Conduct periodic plot audit to assess the vacant plots
- Assessment of Nyakayojo way station to set up temporary structures for the Kisoro convoys.

Kyaka II

- 81.5 sq KM
- Hosting 106,391 refugees and currently receiving new arrivals
- Currently receiving 800 persons per week.

Available vacant land:

- 55,000 more refugees if improved settlement approach is considered
- The assessed capacity is 150,000 refugees however the target is 120,000 to allow for family reunifications.

Kyangwali

- 142 sq KM
- Hosting 101,000 refugees
- Estimated capacity is 200,000

Pending recommendation:

- Conduct plot verification to assess the actual number of plots that are vacant
- Set up accessible sanitary facilities of appropriate technology.
- Improve the road conditions in the settlements

Available vacant land:

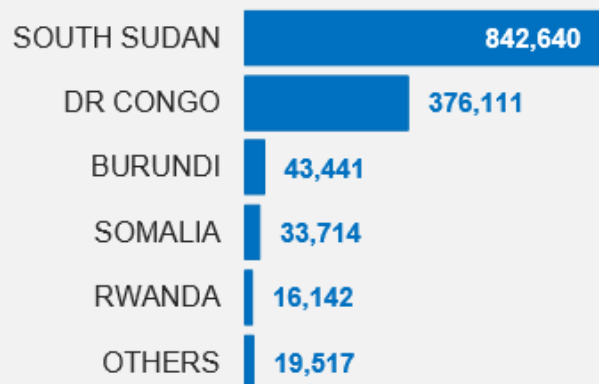
- 90,000 individuals if improved settlement approach is considered
- Rukunyu, Nyamiganda, Rwenyawawa, Kentomi, Malembo B

Refugee population, August 2019 | Source: OPM proGres

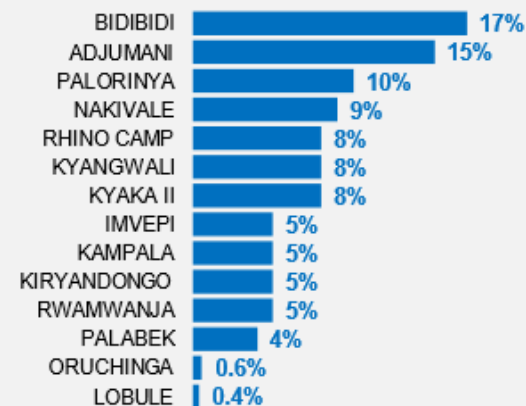
Total refugees and
asylum-seekers**

1,331,565

Countries of origin

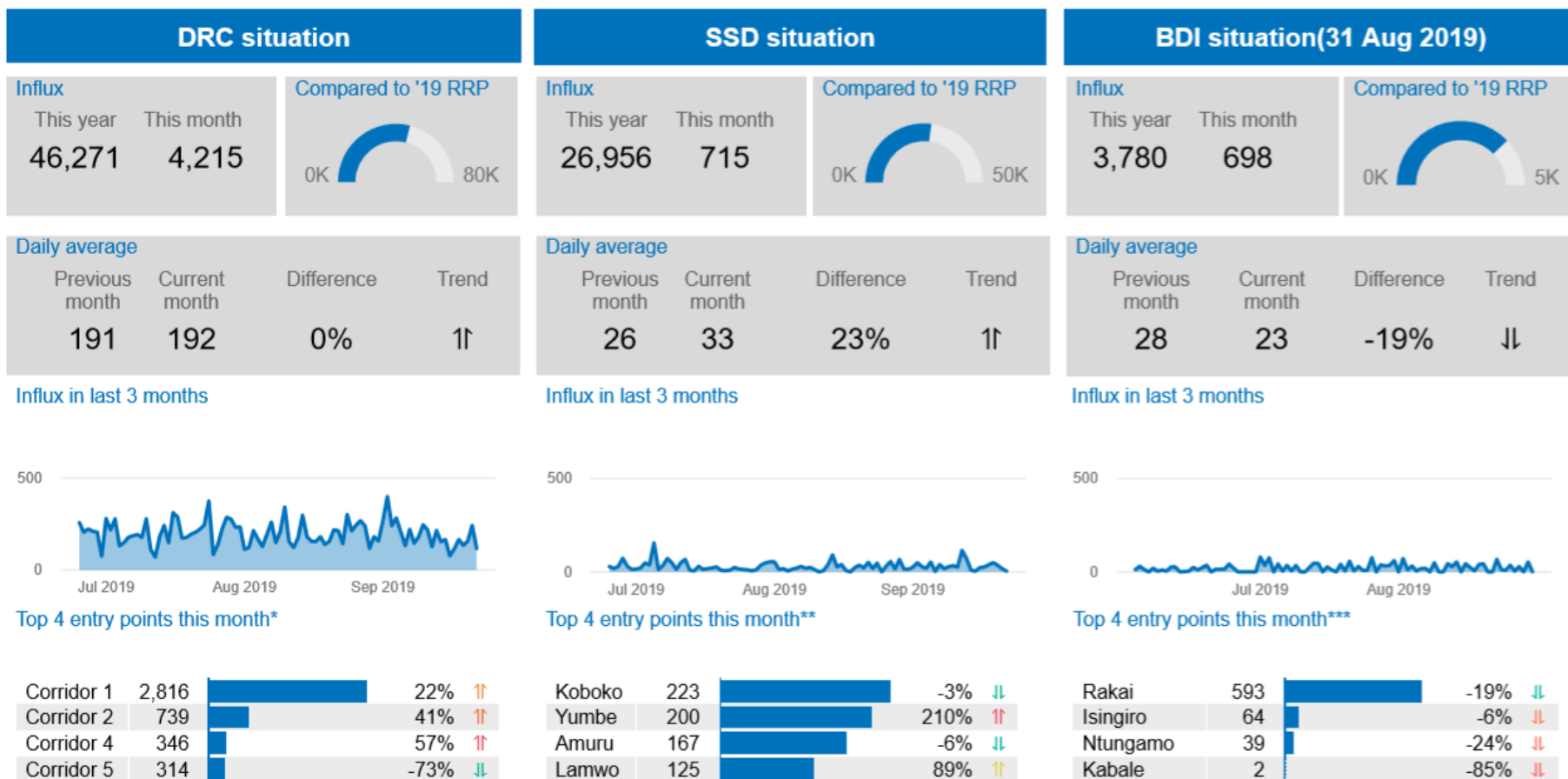


Refugees per settlement



Refugee influx, as of 22 Sept 2019 | Source: Joint Border Monitoring

Total influx in 2019 to date: 77,007 individuals (Burundi data as of 31 August 2019)

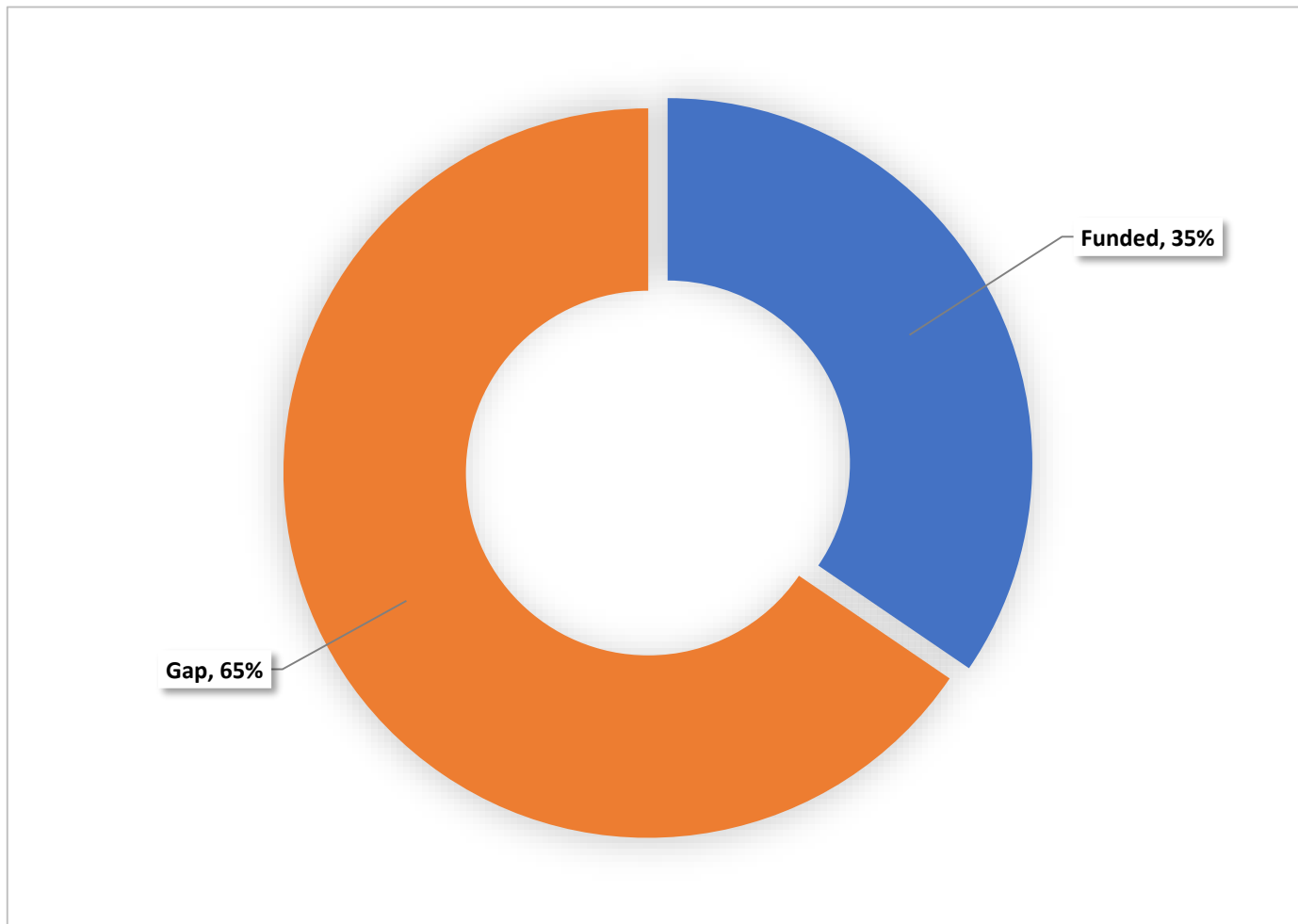


* Corridor 1 (Nteko, Bunagana, Busanja), Corridor 2 (Ishasha/Kihihi, Kyeshero, Butogota, Kabingo), Corridor 4 (Ntoroko), Corridor 5 (Lake Albert)

** Amuru (Elegu), Lamwo (Ngomoromo, Awenolwi, Madi Opei, Waligo), Koboko (Kuluba, Oraba, Busia, Ocea), Yumbe (Gobolo, Kerwa, Keyi, Menzere)

*** Rakai (Mutukula), Isingiro (Kikagati), Ntungamo (Kamwezi, Mirama Hills, Kizinga, Kashenyi), Kabale (Katuna)

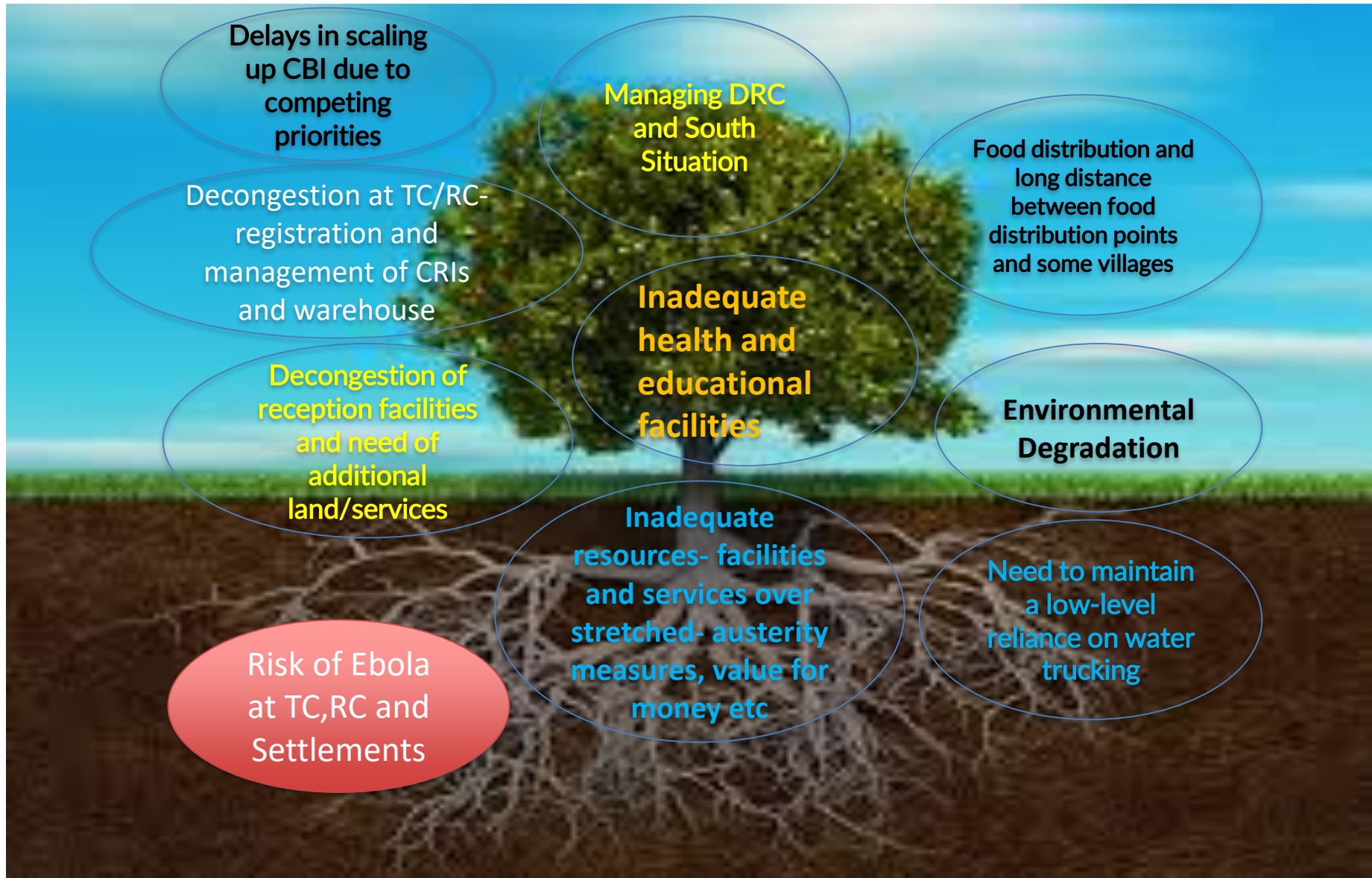
2019-2020 Uganda RRP | Tentative funding update



Requirements for 2019: **US \$927 million**

Funded: **US \$320 million**

Key challenges/Gaps in the Uganda refugee response



CRI/NFI Responsibilities

- 03 MSRP warehouses and 11 Distribution Storage Points
- Partners for warehouse/Distribution SP/distribution include

Roles & responsibilities:

Partners

- Adherence to distribution processes guided by existing SOPs & distribution scales
- Ensure release of approved requests duly signed by Head of Office
- Conduct monthly inventory of stocks and reconciliations
- Use Global Distribution Tools & KOBO
- Post distribution monitoring and feed back
- Regular spot-check control and training

UNHCR

- Organize and conduct capacity training & provide daily on site support
- Timely procurement and replenishment

Impact of the Rainy Season

Rainfall related challenges in the Field for the next 3 months: From left to right: Refugees taking a hot meal after convoy got stuck near Kyaka and Water bowser and WFP trucks stuck at Vurra Corps, along the main road to Yoro Base camp in Rhino camp Refugee settlement.



Meeting the basic needs: Refugees taking a hot meal at Nyakayojo way station.



Engaging host and refugees in road rehabilitation through Cash for Work: Yumbe.



Managing congestion at Nyakabande TC: left to right below preparation of a convoy to Kyaka and refugees relocated to the Old TC.





- Thank you to all Partners
Operation MERCI BEAUCOUP