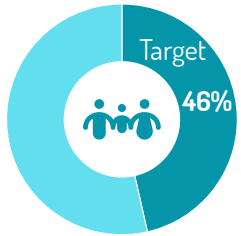


## Key information

**1M** R&M\* from VEN will be living in Peru by December 2020

**28** Organizations  
**8** UN agencies and **20** NGO

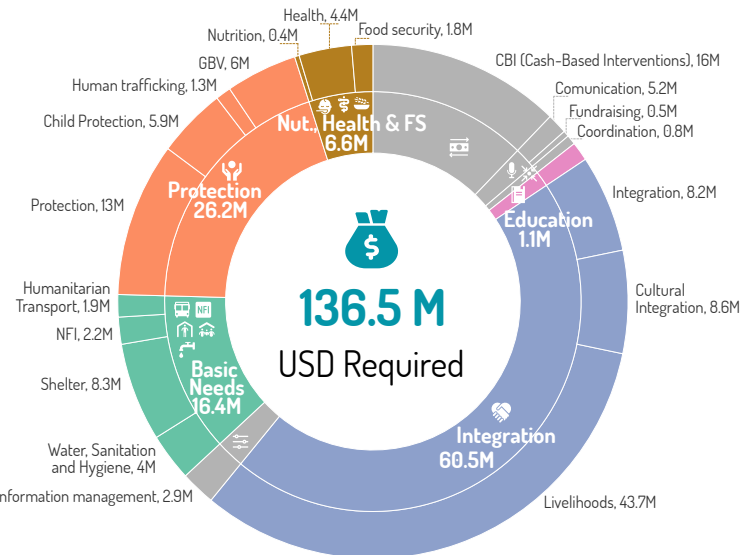
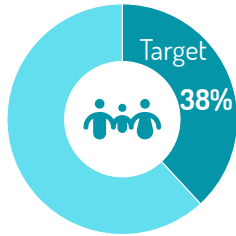
## People in need & Target



**Host community**  
**270,000** People in need  
**125,000** Target population

## R&M from VEN living in Peru

**620,000** People in need  
**235,000** Target population



## Organizations by department

23 Departments

**TUMBES (13)**  
ADRA, COOPI, Foro Salud, IOM, PAHO/WHO, PMH - CEP, Plan International, RET, Save the Children, UNFPA, UNHCR, UNICEF, World Vision

**CAJAMARCA (1)**  
Foro Salud

**AMAZONAS (2)**  
Foro Salud, PAHO/WHO

**PIURA (6)**  
COOPI, ILO, IOM, PAHO/WHO, Plan International, Save the Children

**LAMBAYEQUE (5)**  
Caritas Peru, COOPI, Foro Salud, PAHO/WHO, Save the Children

**LA LIBERTAD (7)**  
ADRA, Caritas Peru, COOPI, Foro Salud, ILO, IOM, Save the Children

**CALLAO (5)**  
ADRA, Ayuda en Acción, CCEFIRO, Foro Salud, UNFPA

**ANCASH (1)**  
Foro Salud

**ICA (3)**  
CESAL, PMH - CEP, Foro Salud

**HUANCAVELICA (1)**  
Foro Salud

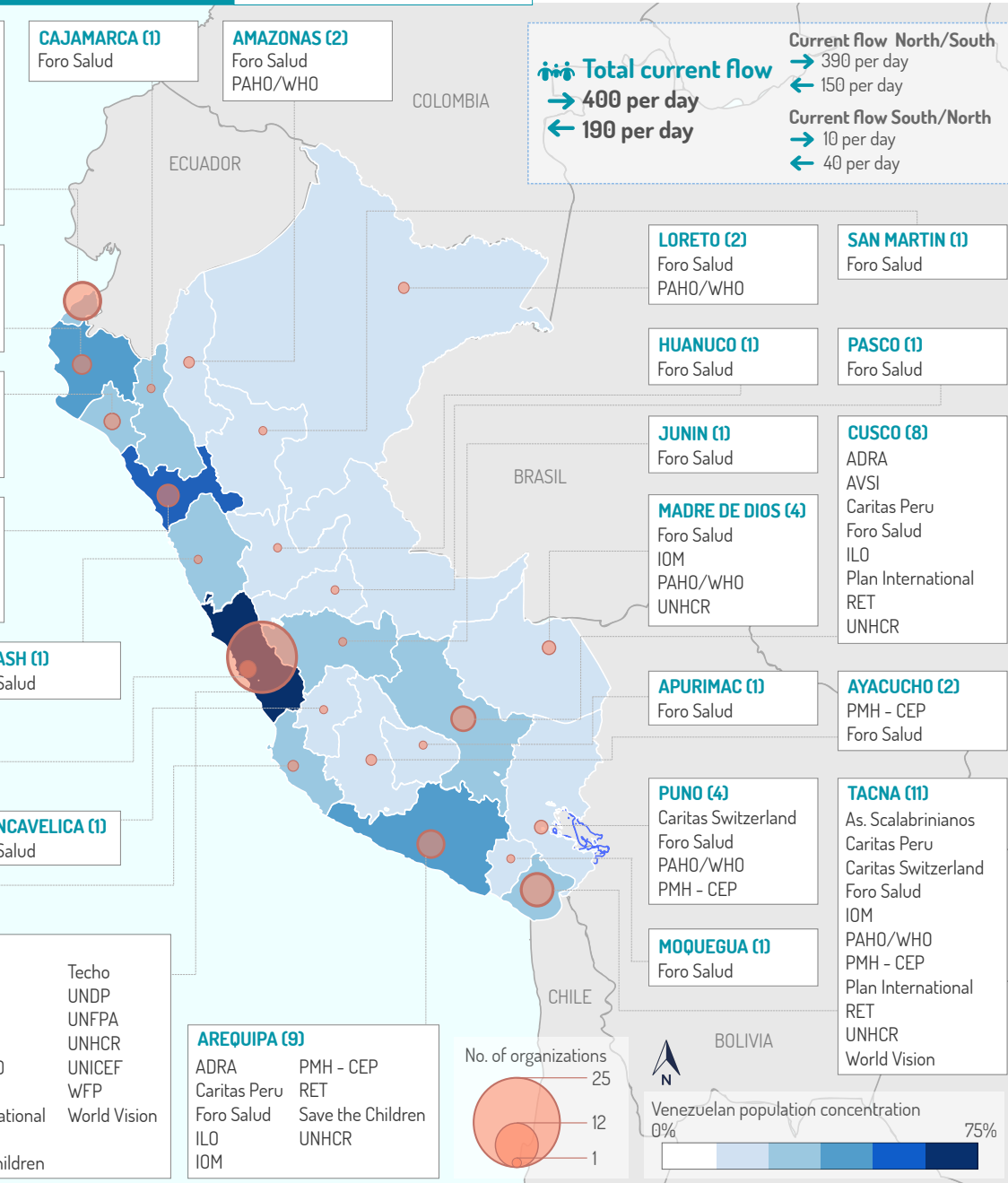
**LIMA (25)**  
AAH, ADRA, As. Scalabrinianos, AVSI, Caritas Peru, CCEFIRO, CESAL, COOPI, Foro Salud, HIAS, ILO, IOM, PAHO/WHO, Caritas Switzerland, PMH - CEP, Plan International, RET, Save the Children, Techo, UNDP, UNFPA, UNHCR, UNICEF, WFP, World Vision

**AREQUIPA (9)**  
ADRA, Caritas Peru, Foro Salud, ILO, IOM, PMH - CEP, RET, Save the Children, UNHCR

**Total current flow**  
→ 400 per day  
← 190 per day

**Current flow North/South**  
→ 390 per day  
← 150 per day

**Current flow South/North**  
→ 10 per day  
← 40 per day



\*R&M: Refugee and Migrant. Source: RMRP 2020 Project Matrix. VEN population concentration - API Facebook Data (IMMAP) as of August 31, 2019

Estimated daily average flow based on Superintendent of Migration information. Figures of People in Need are estimates made by the GTRM based on national representative information.

Acronym: AAH: Action Against Hunger; NFI: Non-Food Items; PMH - CEP: Pastoral of Human Mobility - Peruvian Episcopal Conference