

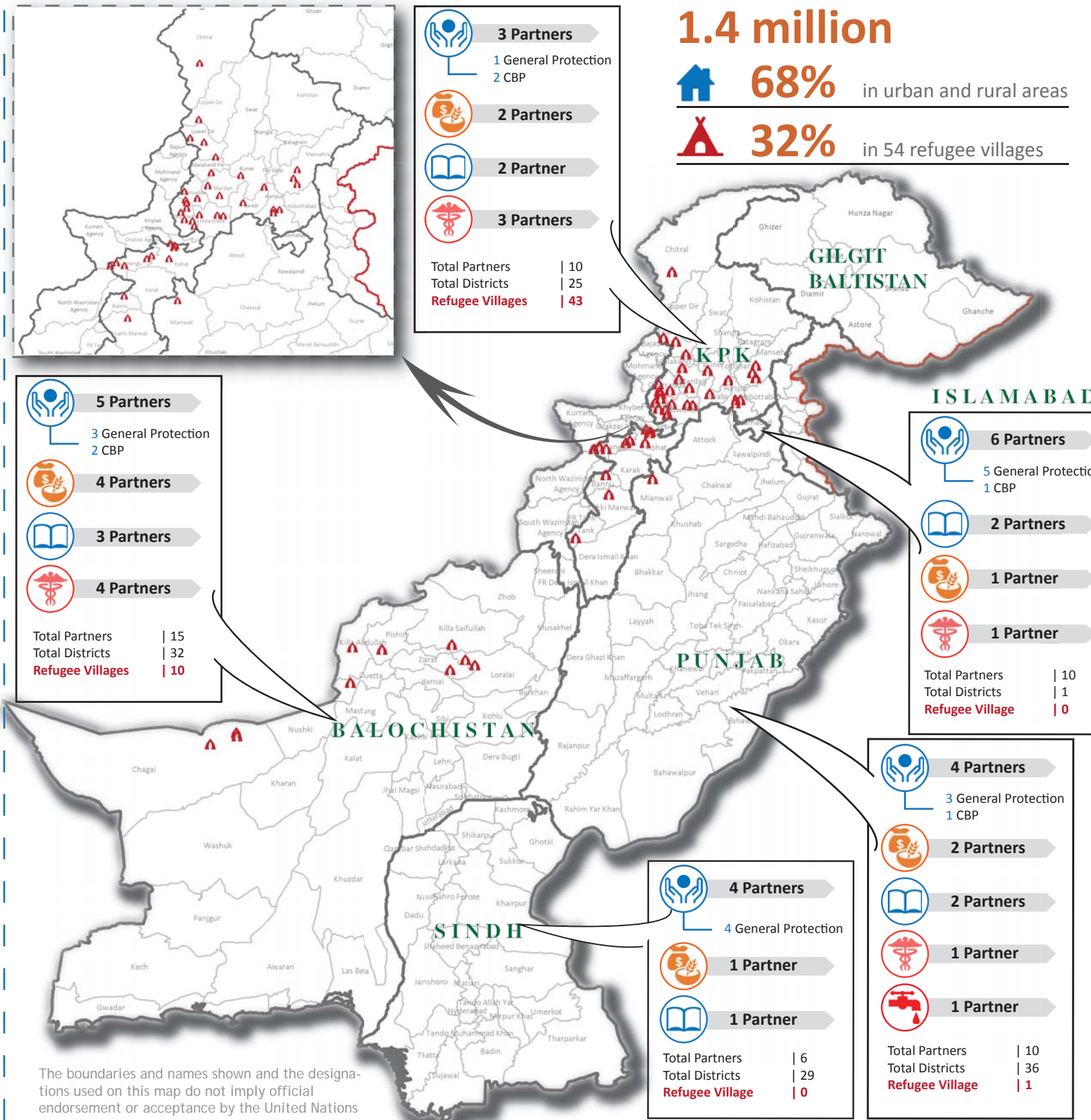
## WHO IS

- |  |      |
|--|------|
| United Nations High Commissioner for Refugees (UNHCR) <a href="http://www.unhcr.org">http://www.unhcr.org</a>                  | UN   |
| National Database & Registration Authority (NADRA) <a href="http://www.nadra.gov.pk">http://www.nadra.gov.pk</a>               | GOV  |
| Ministry of Repatriation & Refugees, Islamabad (MoRR)  | GOV  |
| Chief Commissionerate of Afghan Refugees (CCAR) - CAR (Pun) - CAR (KP) - CAR (Bal) - ARRC                                      | GOV  |
| Ministry of Health/ Department of Health <a href="http://www.nhsr.org">http://www.nhsr.org</a>                                 | GOV  |
| National Vocational Technical Training Centre (NAVTTTC) <a href="http://www.navtttc.org">http://www.navtttc.org</a>            | GOV  |
| International Catholic Migration Commission (ICMC) <a href="http://www.icmc.net">http://www.icmc.net</a>                       | INGO |
| Society for Human Rights & Prisoners' Aid (SHARP) <a href="http://www.sharp-pakistan.org">http://www.sharp-pakistan.org</a>    | NGO  |
| Cursor of Development and Education, Pakistan (CODE) <a href="http://codepk.org">http://codepk.org</a>                         | NGO  |
| Pakistan Poverty Alleviation Fund (PPAF) <a href="http://www.pfaf.org.pk">http://www.pfaf.org.pk</a>                           | NGO  |
| Legends Society (LS) <a href="http://legendsociety.org">http://legendsociety.org</a>   | NGO  |
| Society for Community Support in Primary Education (SCSPEB) <a href="http://www.scspeb.org">http://www.scspeb.org</a>          | NGO  |
| Taraqee Foundation (TF) <a href="http://taraqee.pk">http://taraqee.pk</a>  | NGO  |
| Tameer-e-Khalq Foundation (TKF) <a href="http://www.tameer-khalq.org">http://www.tameer-khalq.org</a>                          | NGO  |
| Drugs and Narcotics Educational Services for Humanity (DANESH) <a href="http://www.danesh.org.pk">http://www.danesh.org.pk</a> | NGO  |
| Water, Environment & Sanitation Society (WESS) <a href="http://wess.org.pk">http://wess.org.pk</a>                             | NGO  |
| Inspire Pakistan (INSPIRE) <a href="http://inspirepk.org">http://inspirepk.org</a>   | NGO  |
| Rural Empowerment and Institutional Development (REPID) <a href="http://www.repid.org.pk">http://www.repid.org.pk</a>          | NGO  |
| The Frontier Primary Health Care Pakistan (FPHC) <a href="http://www.frontierphc.com">http://www.frontierphc.com</a>           | NGO  |
| Innovative Development Organization (IDO) <a href="http://www.ido.org.pk">http://www.ido.org.pk</a>                            | NGO  |

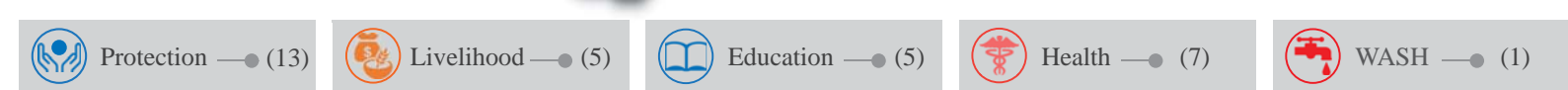
In addition, a partnership with UN Sister Agencies and Government line departments

More information available on UNHCR: data portal <https://data2.unhcr.org/en/country/pak>  
For Feedback Contact: UNHCR, Information Management Unit: [Jaber@unhcr.org](mailto:Jaber@unhcr.org), [Zahoor@unhcr.org](mailto:Zahoor@unhcr.org)

## Doing WHAT and WHERE



The boundaries and names shown and the designations used on this map do not imply official endorsement or acceptance by the United Nations



Province	Sector	IPs	Districts Covered
Balochistan	Protection	NADRA	32
		WESS	4
		SEHER	1
		DANESH	1
	Livelihood	CAR (Bal)	32
		PPAF	1
		NAVTTTC	5
	Education	TF	1
		IDO	4
		SCSPEB	4
		TKF	1
	Health	INSPIRE	1
LS		1	
TF		2	
Islamabad	Protection	TKF	2
		MoH-DoH	32
		SHARP	1
		ICMC	1
		REPID	1
	Livelihood	MoRR	1
		CCAR	1
		CODE	1
		NAVTTTC	1
		INSPIRE	1
KPK	Protection	SHARP	12
		NADRA	25
		CAR (KP)	43 RVs
	Livelihood	PPAF	1
		NAVTTTC	7
	Education	REPID	12
		INSPIRE	1
Health	FPHC	6	
	PDH/CAR	6	
	MoH-DoH	25	
Punjab	Protection	SHARP	4
		REPID	1
		NADRA	36
	Livelihood	MoRR	4
		CAR (Punjab)	1
	Education	NAVTTTC	3
		CAR (Punjab)	1
Health	INSPIRE	1	
	WASH	CAR (Punjab)	1
Sindh	Protection	CAR (Punjab)	1
		MoH-DoH	36
		MoRR	1
	Livelihood	ARRC	1
Education	NAVTTTC	1	
Education	INSPIRE	1	

Refugee Coordination countrywide: United Nations High Commissioner for Refugees (UNHCR)

Sources: UNHCR Pakistan and Afghan National Registration (ANR) Database for Refugees Statistics