

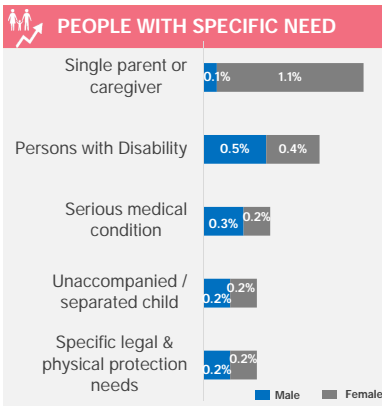
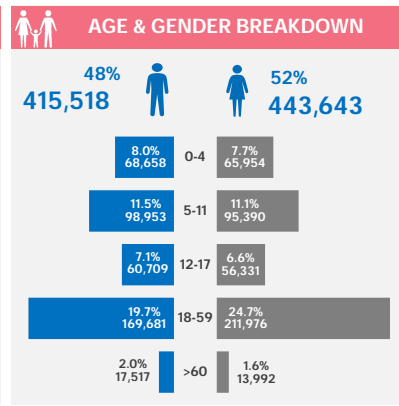
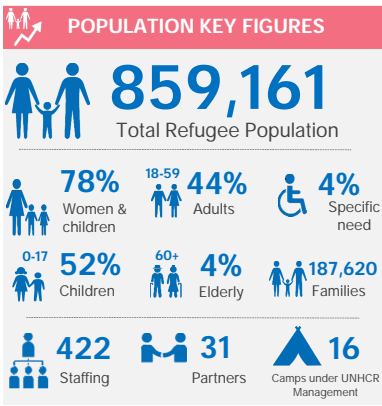
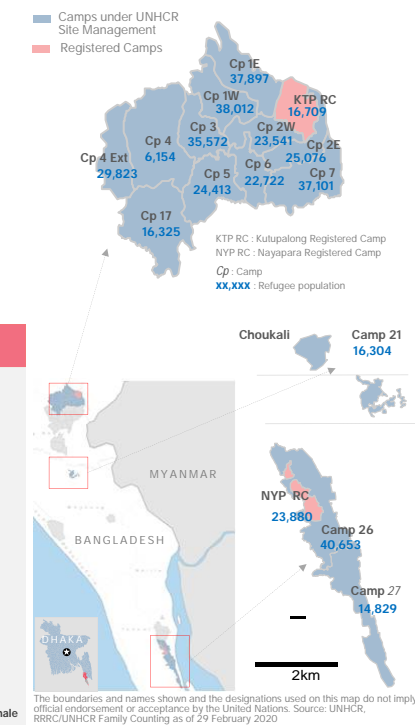
SITUATION OVERVIEW

Over 744,000 Rohingya refugees have fled violence from Myanmar's Rakhine state since August 2017 and are hosted in Bangladesh. Most of the refugees rely on humanitarian assistance, having left with few possessions and exhausted their financial resources during the journey.

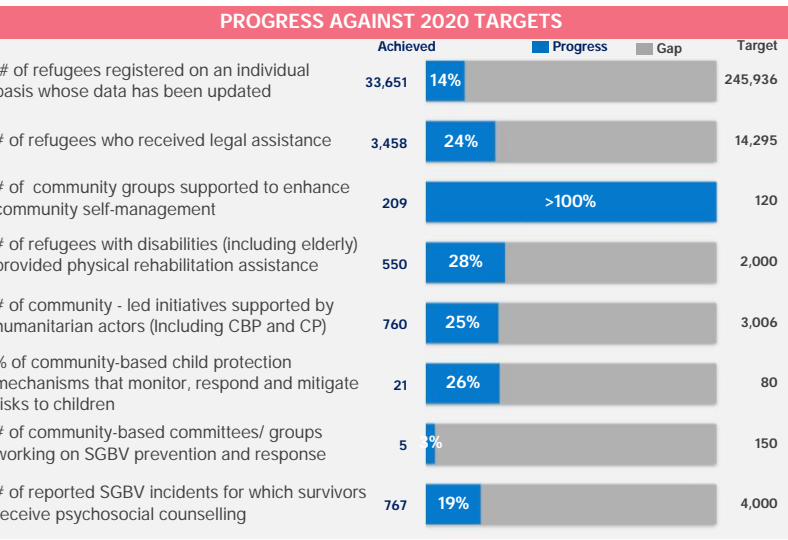
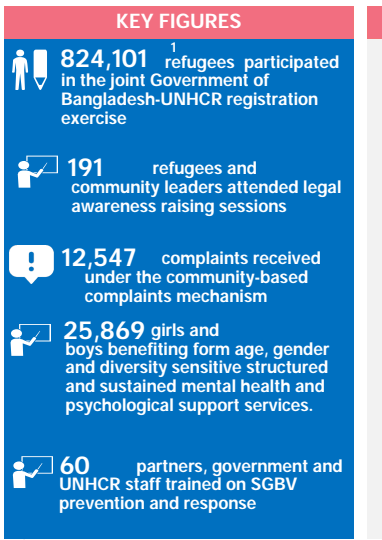
More than 859,000 Rohingya refugee women, men, girls and boys are hosted in Cox's Bazar District, including 34,172 registered refugees who arrived in the 1990s (4%), and other unregistered Rohingya refugees who had settled in host communities prior to August 2017. Children make up 52% of the total refugee population and women and girls make up 51%. One in three refugee families have at least one easily identifiable protection vulnerability. Whilst the pace of arrivals has decreased, refugees continue to arrive in Bangladesh, as of end of August 2019.

The dashboard monitors the monthly achievements of selected indicators from the 2020 country operations plan for each strategic area of activity with cumulative key figures and monthly highlights.

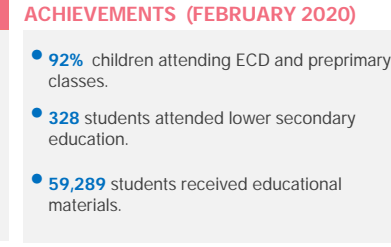
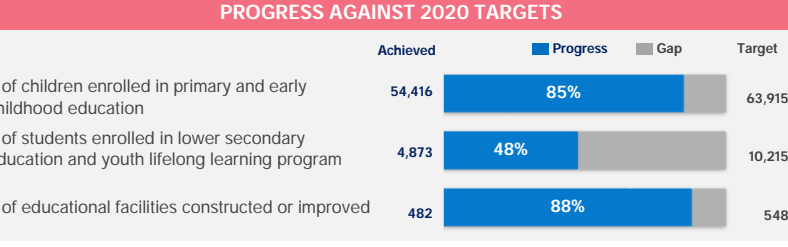
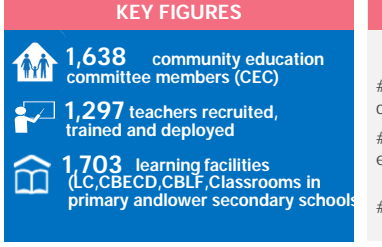
GEOGRAPHIC SITUATION



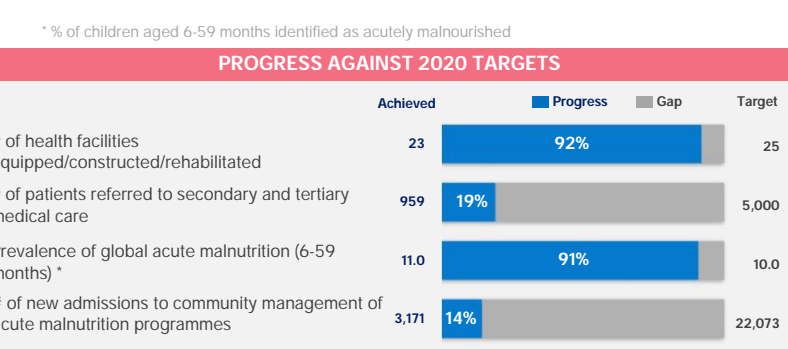
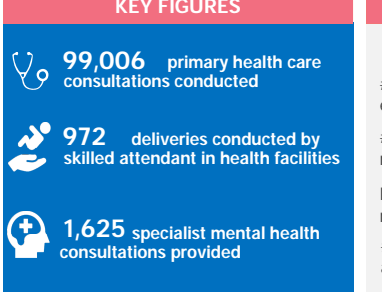
PROTECTION



EDUCATION

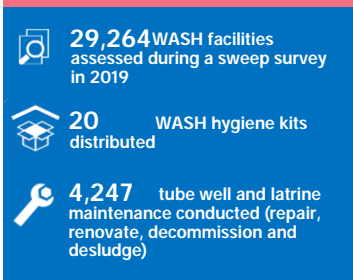


HEALTH & NUTRITION

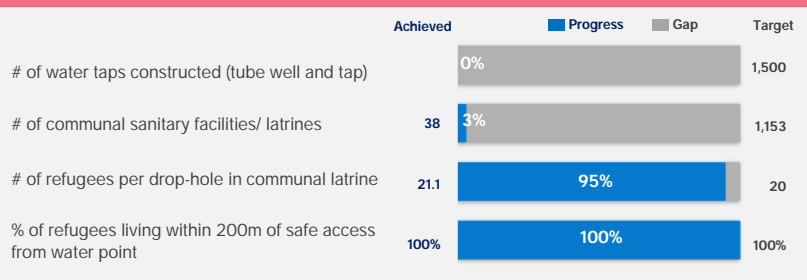


WASH

KEY FIGURES



PROGRESS AGAINST 2020 TARGETS

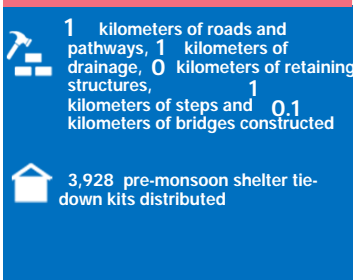


ACHIEVEMENTS (FEBRUARY 2020)

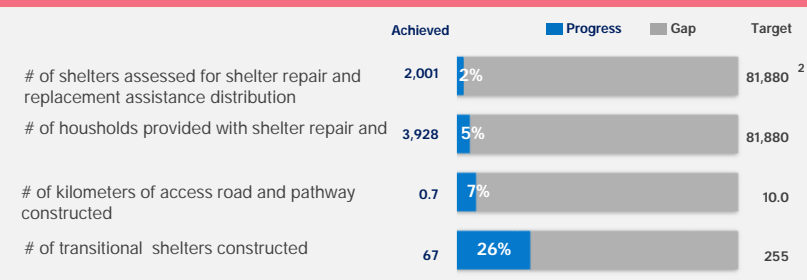
- 29** WASH facilities constructed in this reporting month, including **29** latrines.
- 2,350** WASH facilities have been maintained in this reporting month, including **472** tube wells and **1,878** latrines.
- 406** waste bins and waste pits installed.

SHELTER

KEY FIGURES



PROGRESS AGAINST 2020 TARGETS



ACHIEVEMENTS (FEBRUARY 2020)

- 2.4** kilometers of infrastructures constructed during this reporting month, including **0.7** km of roads and pathways, **0.1** km of bridges, **0.3** km of retaining structures and **1** km of steps.
- 2,001** partial shelter kits provided.

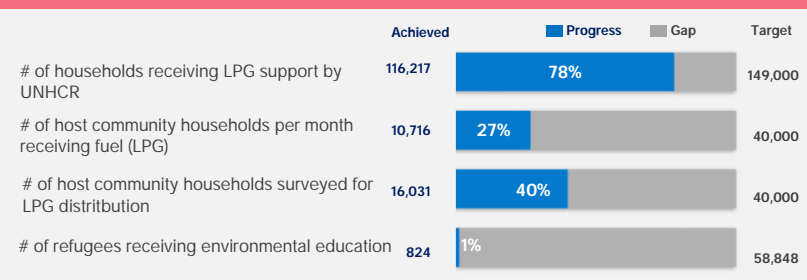
² Comprehensive target which include targets from all UNHCR partners involved in shelter repair and replacement assistance distribution.

ENVIRONMENT & ENERGY

KEY FIGURES



PROGRESS AGAINST 2020 TARGETS



ACHIEVEMENTS (FEBRUARY 2020)

- 4,029** refugee households received LPG cylinder while LPG refills were distributed to **72,200** refugee households.
- 2,168** host community households received LPG cylinder in 2020.
- 824** refugees received environmental education.

NFI & SITE MANAGEMENT

KEY FIGURES



PROGRESS AGAINST 2020 TARGETS

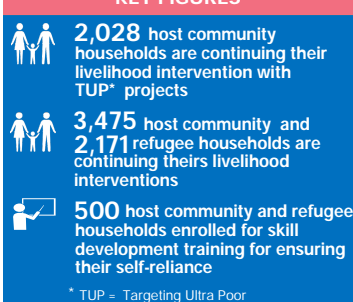


ACHIEVEMENTS (FEBRUARY 2020)

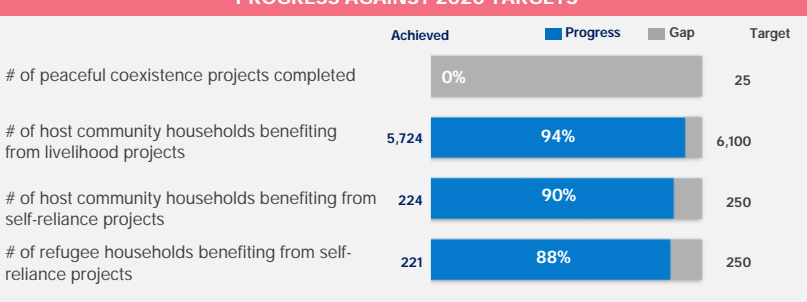
- 49** refugee households received core relief items.
- 19,588** female menstrual hygiene kits distributed to women age 12 to 59 year old.

SOCIAL COHESION

KEY FIGURES



PROGRESS AGAINST 2020 TARGETS



ACHIEVEMENTS (FEBRUARY 2020)

- 3,475** host community and **2,171** refugee households have initiated their livelihood interventions while **2,028** are continuing their livelihood interventions with TUP projects.
- 224** host community and **221** refugee members have been enrolled for skill development training for ensuring their self-reliance.

THANK YOU

UNHCR's humanitarian response in Bangladesh is made possible thanks to the generous support of major donors who have contributed unrestricted funding to UNHCR's global operations, and to donors who have generously contributed directly to UNHCR Bangladesh operations.

In 2019/2020, support continued to be generously was received from the following: Austria, Australia, Bangladesh, Canada, Denmark, Estonia, the European Union, Finland, France, Germany, Ireland, Italy, Japan, the Republic of Korea, the Netherlands, New Zealand, Norway, Qatar, the Kingdom of Saudi Arabia, Spain, Sweden, Switzerland, Thailand, the United Arab Emirates, the United Kingdom, the United States of America, and CERF.

UNHCR is sincerely grateful for the additional support received from many individuals, foundations, and companies worldwide including Bill & Melinda Gates Foundation, the Church of Jesus Christ of Latter-day Saints, Education Cannot Wait, Kuwait Finance House, Qatar Charity, and Thani Bin Abdullah Bin Thani Al Thani Humanitarian Fund.