

MAY 2020

**COVID-19 RAPID NEEDS ASSESSMENT
FOR INDIVIDUALS UNDER INTERNATIONAL
AND TEMPORARY PROTECTION IN
ZEYTINBURNU, ISTANBUL**



Save the Children

IN PARTNERSHIP WITH



AKDEM
Aile Kadın Destekleme
ve Engelliler Merkezi



**ZEYTINBURNU
BELEDİYESİ**
zeytinburnu.istanbul | 444 1984

INTRODUCTION

Turkey currently hosts **3,580,263** SuTP¹, along with approximately **400,000** individuals from other nationalities². Istanbul hosts the highest number of refugees in Turkey, with **496,695** registered Syrians alone. A rapid needs assessment was conducted with the support of beneficiaries of our current PRM³ funded project to identify the needs of most vulnerable girls, boys, women and men in response to Covid-19. The location is Zeytinburnu Municipality.

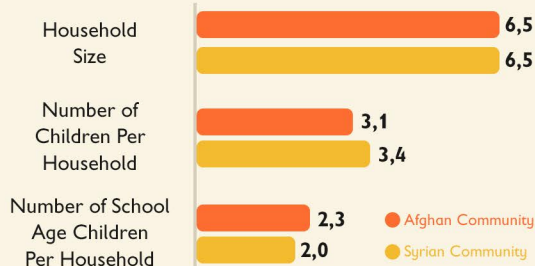
Total Affected Population In the Assessment Location

At the start of the project, the number of SuTP was 23.737, and number of individuals registered under IP⁴ was 63 (DGMM, 2018). SC Turkey estimates the current figures to be above 30.000 Syrians, and 40.000 individuals from other nationalities where Afghan's constitute the majority.⁵

Basic Information About the Assessment*

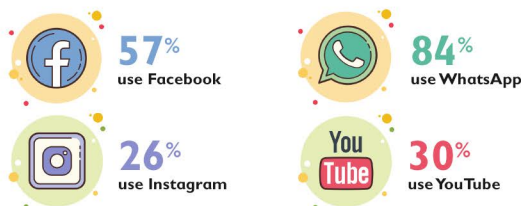


Basic Household Information



How the Children Spend Their Day

97% of the children assessed spend their entire time at home playing, studying, drawing/painting and watching TV with WhatsApp being the major medium for staying in touch with friends. Less than 5% access other social media platforms. Parents however have much more frequent access as indicated below and this can help design targeted messaging as relevant.



Additional Information

SCI has introduced a remote psychological first aid (PFA) guidance derived from IFRC and WHO's tools to the partner staff conducting the needs assessment. Assessment participants were offered remote PFA prior to the survey. In total **143** (62 Syrian, 81 Non-Syrian) accepted to benefit from the support.

ACCESS TO DISTANCE/ ONLINE EDUCATION

Basic Information About Children In the Assessed Household

1051 Total Number of Children In the Assessed Household

13% of the households noted that they have children with disabilities or chronic illnesses in their households, which constitutes a sizeable risk group within the covid-19 context.

669 Total Number of School-Age Children In the Assessed Household

Prior to covid-19 outbreak, **74%** of school aged children were enrolled in school.

60% of school-age Afghan children
94% of school-age Syrian children.

Afghan Households

86% of enrolled children have shifted to online/distance education, mostly through TV or the mobile app. **73%** of the households find the setup productive for their children.

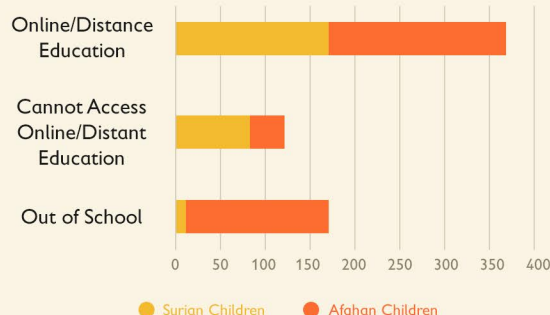
Syrian Households

66% of enrolled children have shifted to online/distant education mostly through TV or the mobile app. **40%** of the households consider the setup productive.

Across both communities' concerns were noted about children having a hard time understanding the content, language barrier difficulties, and insufficient lesson frequencies.

Households where the parents/caregivers reported that they could not make the shift cited various reasons including lack of; TV, access to TRT channel, wifi connection and computer/tablet. **41%** of the households reported that they need additional education materials (i.e. stationary, course books, test books for exam preparation).

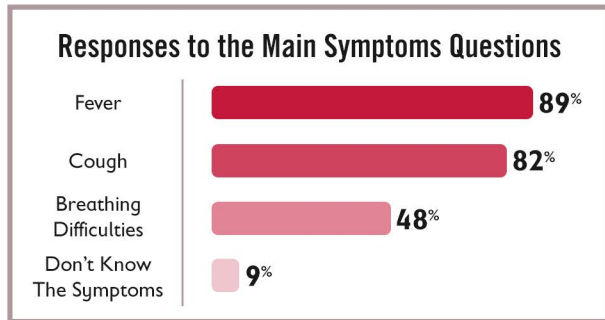
Access to Education



COVID-19 AWARENESS

Knowledge on Symptoms

The Afghan community constituted **78%** of the households where the parent/caregiver was not informed of the symptoms. Additional symptoms cited include fatigue, headaches, sore throat, stomach-ache, running nose, diarrhea and itching.



Precautions and Reactions

6% of the respondents, primarily Syrians, reported that they do not know how to protect themselves or their families. **21%** stated that they partially know. Precautionary actions cited include staying home, social distancing, use of Turkish kolonya, not touching one's face, covering mouth and nose when sneezing or coughing. Overall, **16%** of the households stated that they do not take any precautions when they leave the house, with **82%** of this figure coming from the Afghan community.

Respondents had access to at least one of the following precautionary hygiene products;



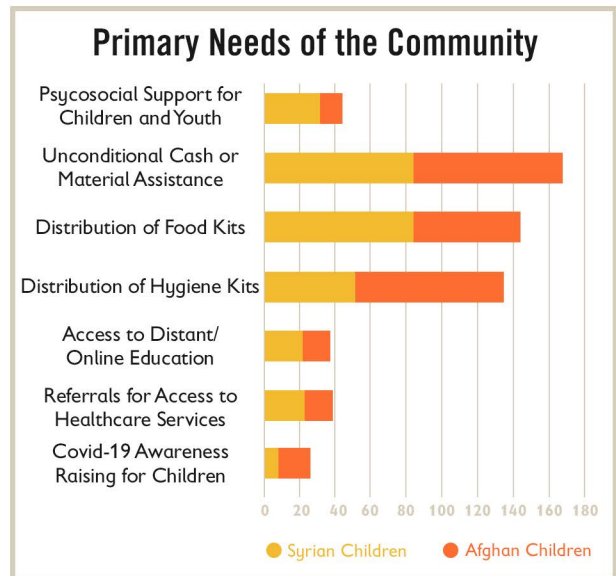
10% of the respondents noted that they do not have access to these items. Again the Afghan community constituted the majority who stated lack of access at **84%**.

If they were to contract the disease, **54%** of the respondents stated that they would approach a healthcare services, **19%** stated that they would quarantine themselves and check on their health, and **10%** stated that they would wait and see whether it is common flu. Other answers included consulting with their families, calling the hotline and contacting AKDEM⁷.

PRIMARY NEEDS

Current Primary Needs

The top 3 priority needs are unconditional cash or material assistance, distribution of hygiene and food kits. While the proportion of the needs for each population group was similar, the Syrian community highlighted the need for psychosocial support to a greater extent.



Future Needs If Current Restrictions Continue

Cash support for rent (**84%**) and for food (**76%**) will remain the top priority. hygiene kits (**58%**), clean water (**20%**), material assistance for medication (**18%**), along with other services including online psychosocial support, and support to cover the bills were also cited.

For further inquiries you may reach out;
Eylül Gür, Meal Coordinator, TCO
Eylul.Gur@savethechildren.org

¹ SuTP: Syrians Under Temporary Protection

² (DGMM, April 2020)

³ PRM: Bureau for Population, Refugees and Migration (US Department of State)

⁴ IP: International Protection

⁵ SC Turkey, 2019, Baseline Report: Strengthening the Protection and Resilience among Refugee and Host Community Children and Adults in Zeytinburnu, Istanbul.

⁶ AKDEM: Zeytinburnu Municipality's Centre for Family, Women Support and People with Disabilities

⁷ The gender breakdown is proportional to the implementing partner, AKDEM's, current beneficiary pool, however it should be considered as an estimate due to shared contact information among the beneficiaries.