



VOLUNTARY REPATRIATION OF BURUNDIAN REFUGEES

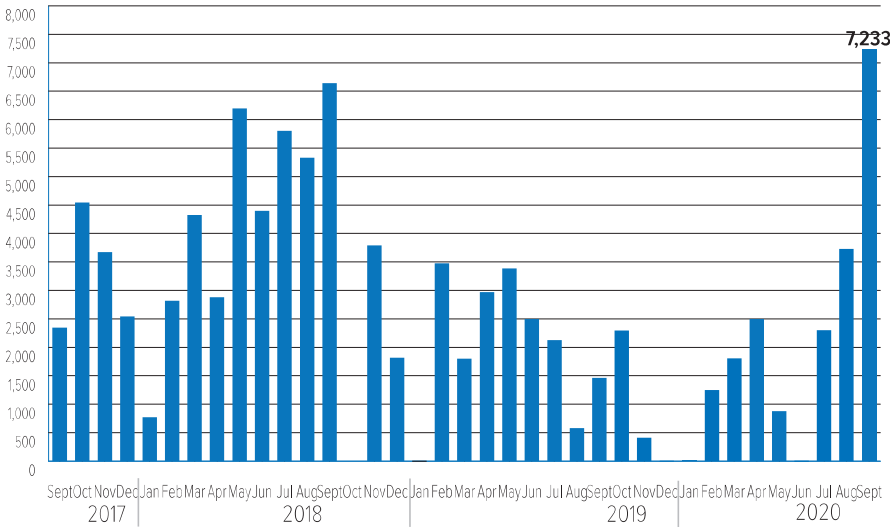
UPDATE AS OF 30 SEPTEMBER 2020

UNHCR and partners have facilitated voluntary repatriation of Burundian refugees since 2017, with the majority of returns from Tanzania, and smaller numbers from the Democratic Republic of the Congo (DRC), Kenya, Rwanda, Uganda and elsewhere. Following the outcome of the presidential and general elections in Burundi in May 2020, renewed interest for voluntary returns were observed amongst refugees living in the DRC and Rwanda. UNHCR began to actively assist returns from August 2020 based on tripartite consultations and agreements with these countries as well as assessments to ensure the voluntariness of return. Moreover, there are ongoing plans to initiate returns from Namibia and potentially other countries in East and Southern Africa in 2021.

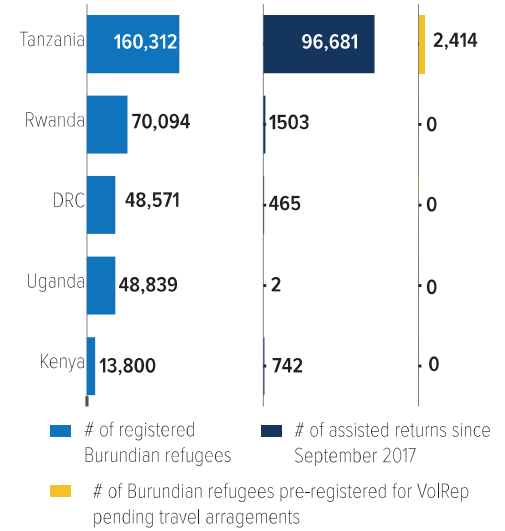
KEY FIGURES – ASSISTED REPATRIATION



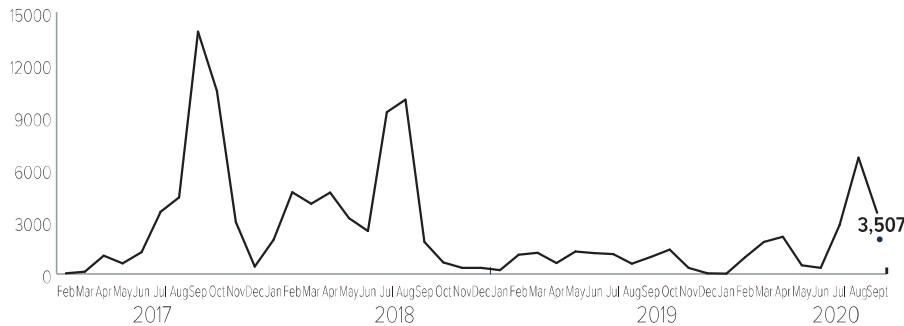
RETURN TRENDS BY MONTH SINCE SEPTEMBER 2017



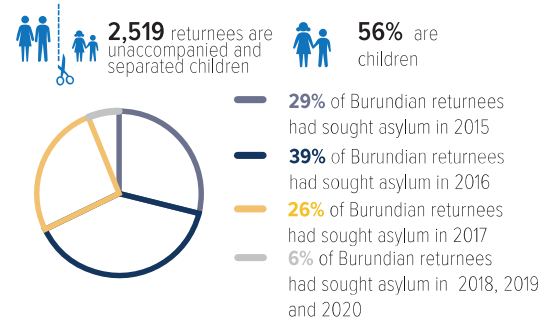
RETURNS BY COUNTRY OF ASYLUM**



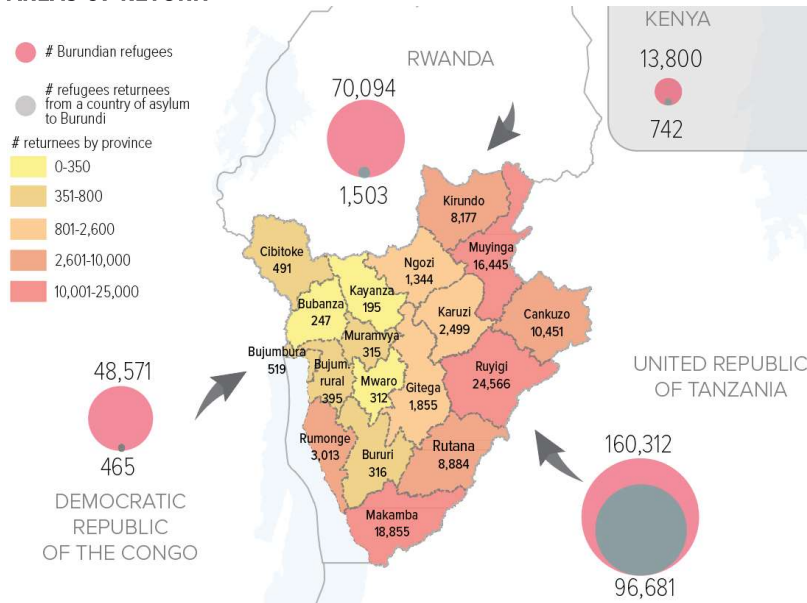
REGISTRATION FOR VOLREP IN TANZANIA 2017-2020



POPULATION PROFILE AT A GLANCE



AREAS OF RETURN***



OVERVIEW

- UNHCR and partners are providing assistance to refugees who have decided to return to Burundi so that they may do so in safety and dignity, as well as to support social cohesion and sustainable return at the community level.
- Additional funding is critically needed to ensure that returns can continue as well as to strengthen returnee monitoring and support sustainable reintegration.
- The voluntary return operations from Tanzania, DRC and Rwanda to Burundi are taking place under the framework of the Tripartite Agreements between these governments and UNHCR. All parties have agreed to ensure returns are voluntary.
- While the governments of Burundi and Tanzania have undertaken activities to facilitate refugee return. All actors in the region acknowledge the importance of refugees having the opportunity to make a free and informed choice about repatriation.
- While returnees are generally being welcomed back

RETURN MONITORING IN BURUNDI

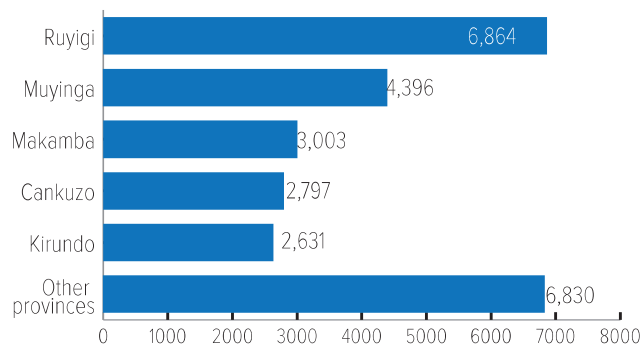
METHODOLOGY

Protection monitoring of returnees to Burundi is an essential protection activity for UNHCR and its commitment under the Tripartite Agreement. It aims to collect, process, analyse and disseminate in a systematic and regular way, the data and information on: 1) The conditions of return of assisted returnees; and 2) The level of reintegration in return areas.

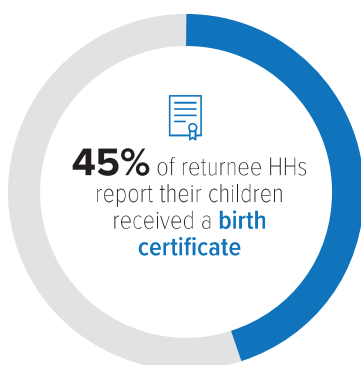
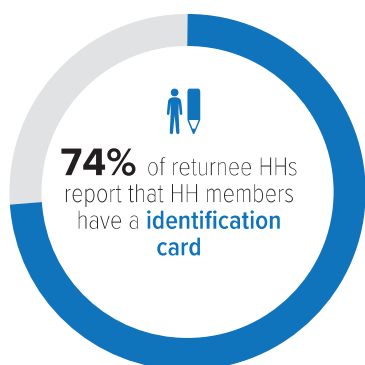
The purpose is to propose an effective protection response by area of intervention and for advocacy purposes (towards sectors of intervention, development actors, donors and government authorities). The figures below reflect data collected from January to September 2020.

MONITORING PROGRESS

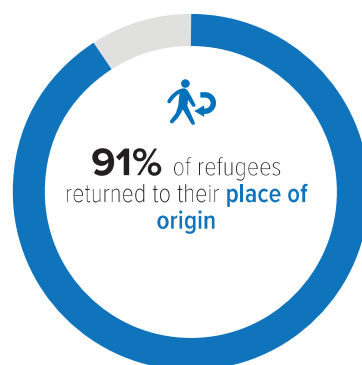
By 30 September 2020, **26,575** interviews with returnee families were conducted (see below the breakdown by province).



CIVIL DOCUMENTATION



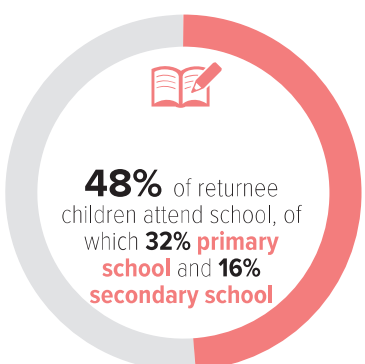
DISPLACEMENT



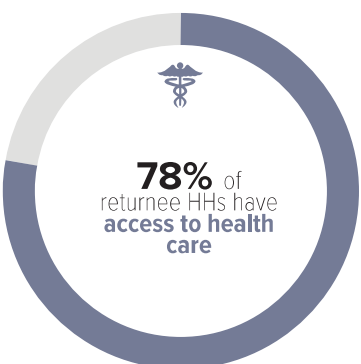
VULNERABILITY



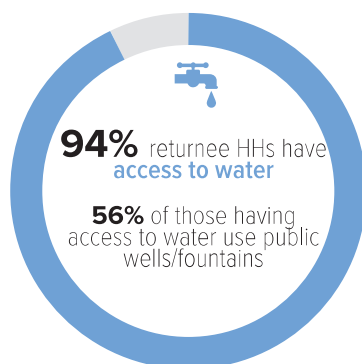
EDUCATION



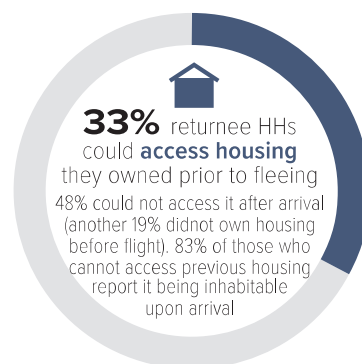
HEALTH CARE



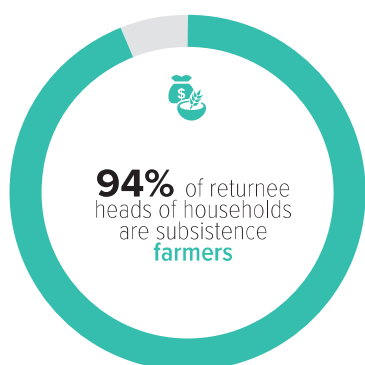
WATER



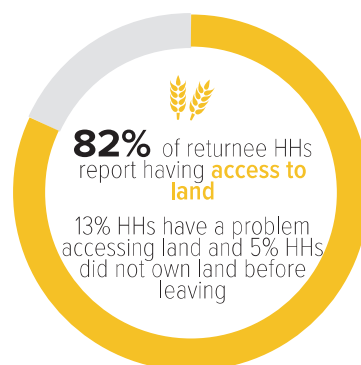
ACCESS TO HOUSING



LIVELIHOODS



ACCESS TO LAND



TOP 3 PRIORITIES IN THE USE OF CASH ASSISTANCE

All refugees who have returned with the assistance of UNHCR receive an initial return package in Burundi consisting of a cash grant, basic household supplies, and food items. Returnees report the cash grant was used for the following top priority expenses:

- 1. Household items (38%)**
- 2. Shelter (24%)**
- 3. Land rental (20%)**

For more information please contact:

UNHCR Burundi: Brigitte Mukanga Eno, Deputy Representative, eno@unhcr.org; Gwendolyn Roeske, Snr Prot. Officer, roeske@unhcr.org; Ana Maria Rivas, Prot. Officer (Monit. analyst), rivasa@unhcr.org; Felix Ndama Wa Ndama, Asst PIM Officer, ndamawan@unhcr.org

UNHCR Regional Bureau for the East and Horn of Africa, and the Great Lakes Area, Migrants, Gen. IMO, migrants@unhcr.org