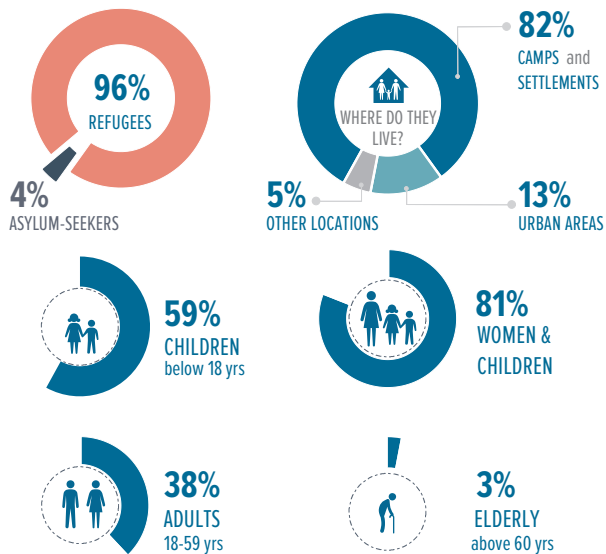
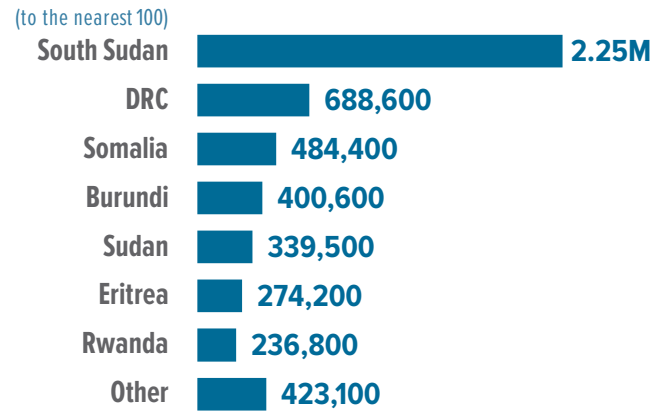


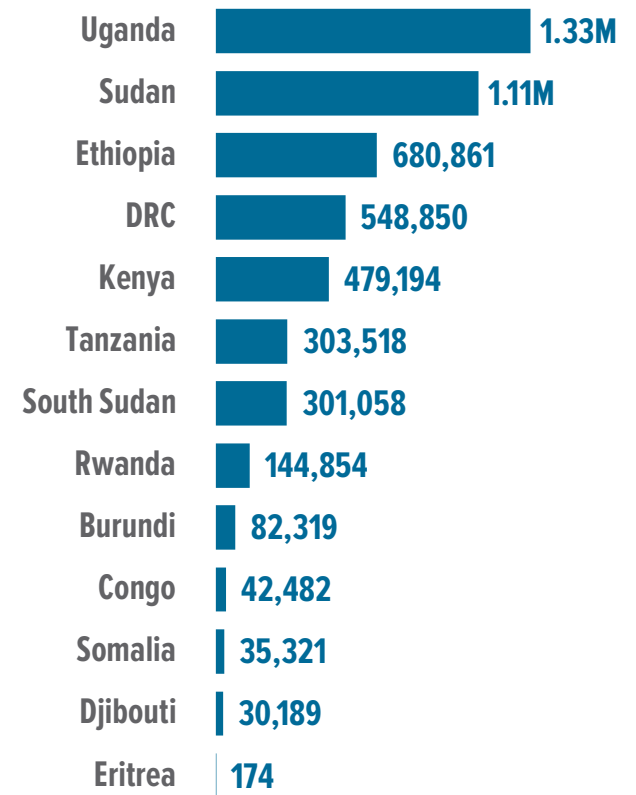
5.1 MILLION
REFUGEES AND ASYLUM-SEEKERS
KEY STATISTICS



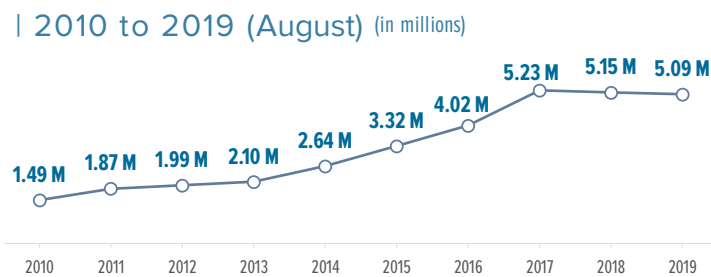
TOTALS BY COUNTRY OF ORIGIN



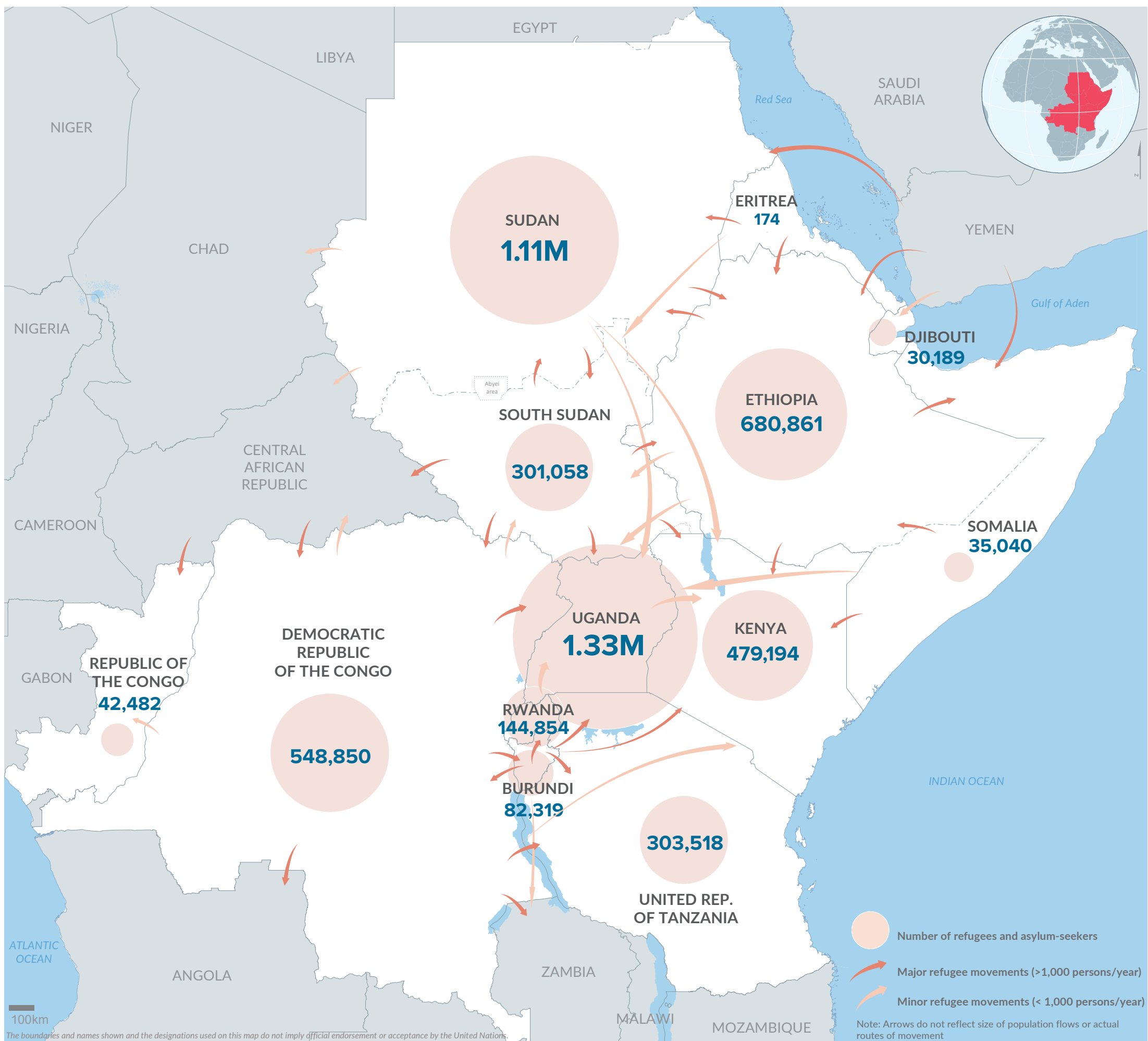
TOTALS BY HOST COUNTRY



ANNUAL TREND OF DISPLACEMENT



* The decrease in population in 2018/2019 is attributed to the completion of a countrywide population verification exercise in Uganda and Ethiopia; as well as spontaneous refugee returns to Burundi and South Sudan.



Final boundaries between the Republic of Sudan and the Republic of South Sudan and Somalia and Ethiopia has not yet been determined. Final status of the Abyei area is not yet determined.

Creation date: 25 Sep 2019 Sources: Geographic data: UNCS. Population statistics: UNHCR Monthly Statistical Reports 31 August 2019 or latest available. Statistics should be considered provisional and subject to change.

Author: UNHCR Regional Bureau for East, Horn of Africa and the Great Lakes region Feedback: kenrsgis@unhcr.org