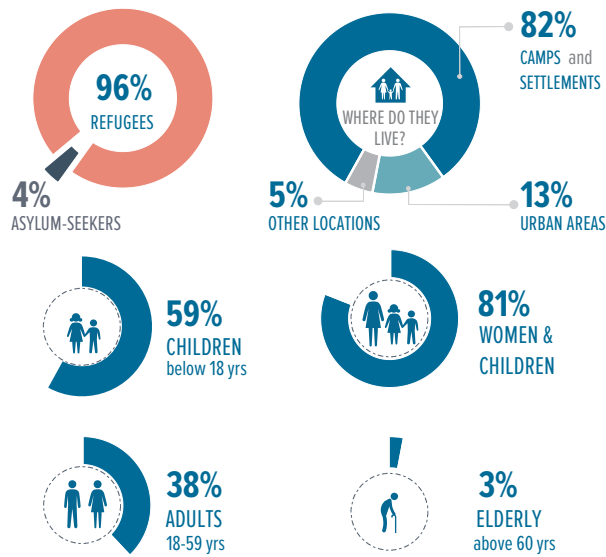
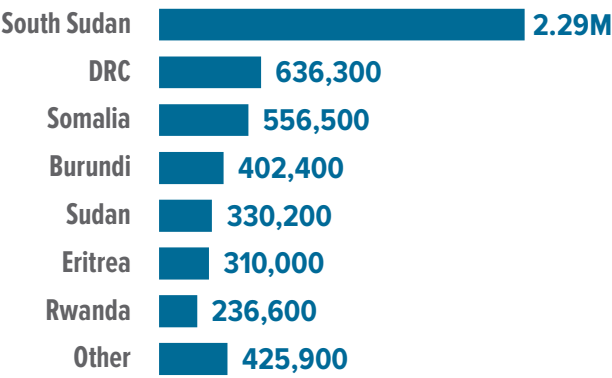


5.18 MILLION
REFUGEES AND ASYLUM-SEEKERS

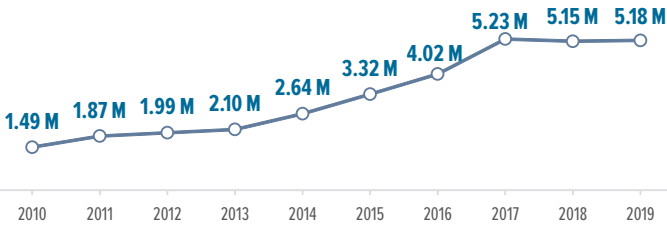
KEY STATISTICS



TOTALS BY COUNTRY OF ORIGIN
(to the nearest 100)

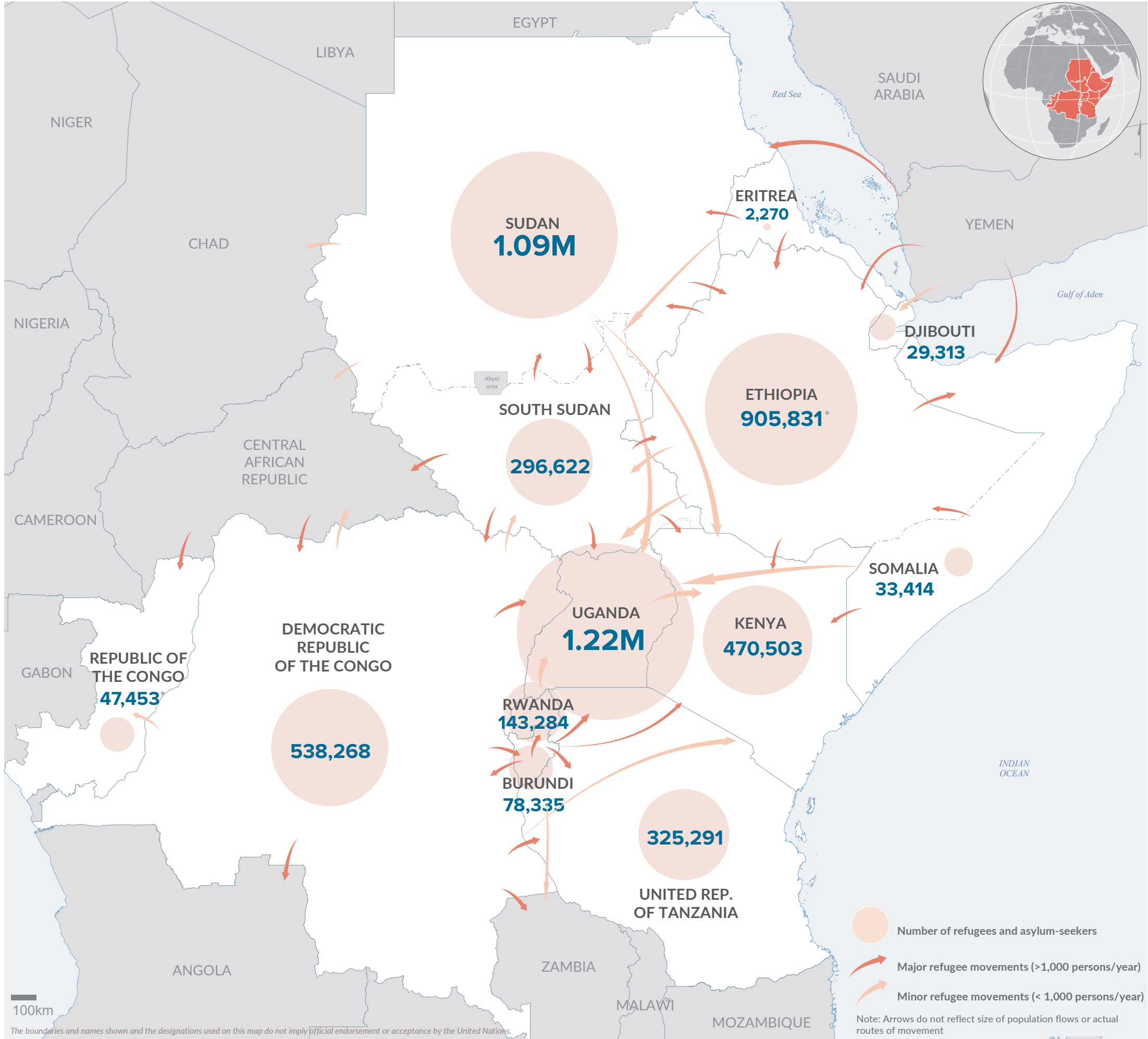
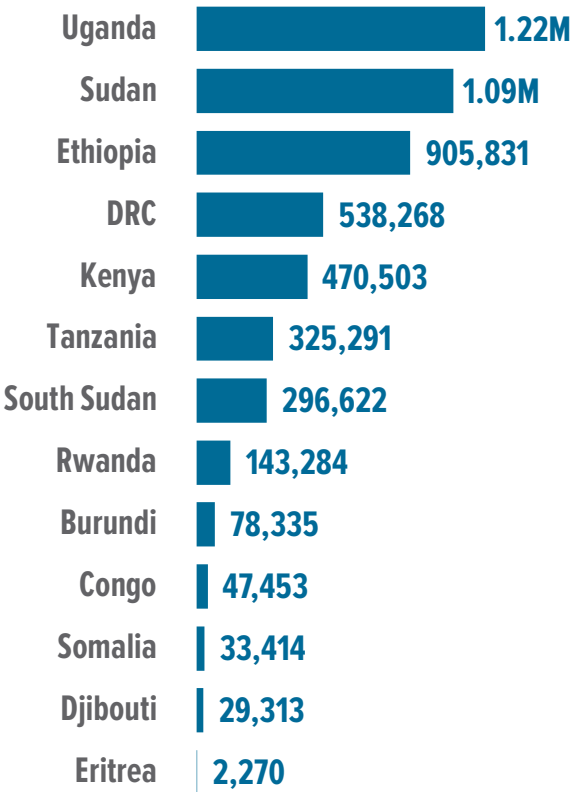


ANNUAL TREND OF DISPLACEMENT
| 2010 to 2019 (Feb) (in millions)



* The decrease in population in 2018 is attributed to the completion of a countrywide biometric verification exercise in Uganda; as well as spontaneous refugee returns to Burundi and South Sudan.

TOTALS BY HOST COUNTRY



Final boundaries between the Republic of Sudan and the Republic of South Sudan and Somalia and Ethiopia has not yet been determined. Final status of the Abyei area is not yet determined.

Creation date: 25 Mar 2019 Sources: Geographic data: UNCS, Population statistics: UNHCR Monthly Statistical Reports 28 February 2019 or latest available. *Pending the completion of countrywide population verification exercises in Ethiopia and Congo, statistics shown are as 31 August and 31 October 2018 respectively. Statistics should be considered provisional and subject to change. Author: UNHCR Regional Service Centre in Nairobi Feedback: kenrgis@unhcr.org