

Who

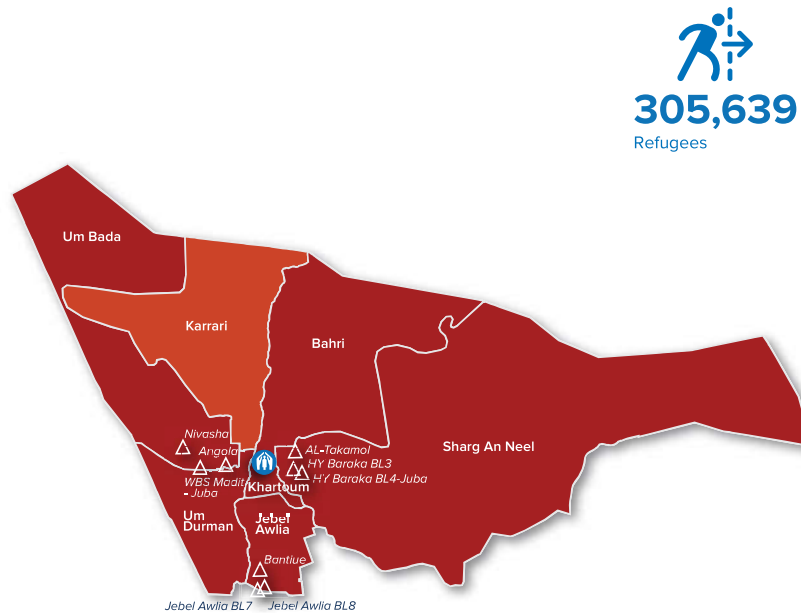
10 Partners

Delivering Refugee Response in Khartoum State



- Al Manar Voluntary Organization (AMNO)
- Alshroog Organization for Social and Culture Development (AOSCD)
- Business and Professional Women's Organization (BPWO)
- CARE International Switzerland (CIS)
- Catholic Agency For Overseas Development (CAFOD)
- Commission of Refugees (CoR)
- Nada El Azhar for Disaster Prevention and Sustainable Development (NADA)
- United Nations Population Fund (UNFPA)
- United Nations High Commissioner for Refugees (UNHCR)
- United Nations International Children's Emergency Fund (UNICEF)

Does What and Where



The boundaries and names shown and the designations used on this map do not imply official endorsement or acceptance by the United Nations.

Per Sector



Locality	UN	Gov	INGO	NGO	Health	Education	Protection	Food Security	Livelihoods/Resilience	Energy/Environment	Shelter/NFI	WASH	CCCM	Partner	UN	Government	National NGO	International NGO	Refugee	Total
Jebel Awlia	2	0	2	0	0	0	0	0	0	0	0	0	0	0	0	0	0	0	0	2
Karrari	2	0	1	0	0	0	0	0	0	0	0	0	0	0	0	0	0	0	0	2
Khartoum	5	1	1	0	0	0	0	0	0	0	1	0	0	0	0	0	0	0	0	7
Khartoum North (Bahri)	1	0	1	0	0	1	1	0	0	0	0	0	0	0	0	0	0	0	0	2
Sharg An Neel	3	0	2	0	0	1	1	0	0	0	0	0	0	0	0	0	0	0	0	4
Um Bada	3	0	2	0	0	0	1	0	1	0	1	0	0	0	0	0	0	0	0	5
Um Durman	2	0	2	1	0	1	1	0	0	0	0	0	0	0	0	0	0	0	0	3

Legend: No partner, 1-5, 6-10, 11 and above

Locality	UN	Gov	INGO	NGO	Partners
Jebel Awlia	UN	Gov	INGO	NGO	AMVO, UNFPA
Karrari	UN	Gov	INGO	NGO	CAFOD, UNFPA, UNFPA
Khartoum	UN	Gov	INGO	NGO	AOSCD, COR, NADA, UNFPA, UNHCR, UNICEF, UNFPA, CAFOD
Khartoum North (Bahri)	UN	Gov	INGO	NGO	UNFPA, UNFPA, BPWO, BPWO
Sharg An Neel	UN	Gov	INGO	NGO	AMVO, CAFOD, UNFPA, AMVO, UNFPA, BPWO, BPWO
Um Bada	UN	Gov	INGO	NGO	AMVO, CAFOD, UNFPA, AMVO, UNFPA, BPWO, CIS
Um Durman	UN	Gov	INGO	NGO	AMVO, UNFPA, AMVO, UNFPA, BPWO, BPWO

Severity of Needs Scale

- Very Low (1)
- Low (2)
- Moderate (3)
- High (4)
- Very High (5)

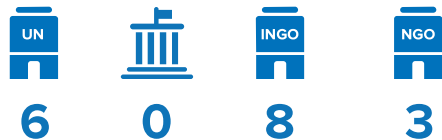
Icons

- Protection
- Education
- Health
- Nutrition
- Food Security
- Livelihoods/Resilience
- Energy/Environment
- Shelter/NFI
- WASH
- CCCM
- Partner
- United Nations
- Government
- National NGO
- International NGO
- Refugee

Who

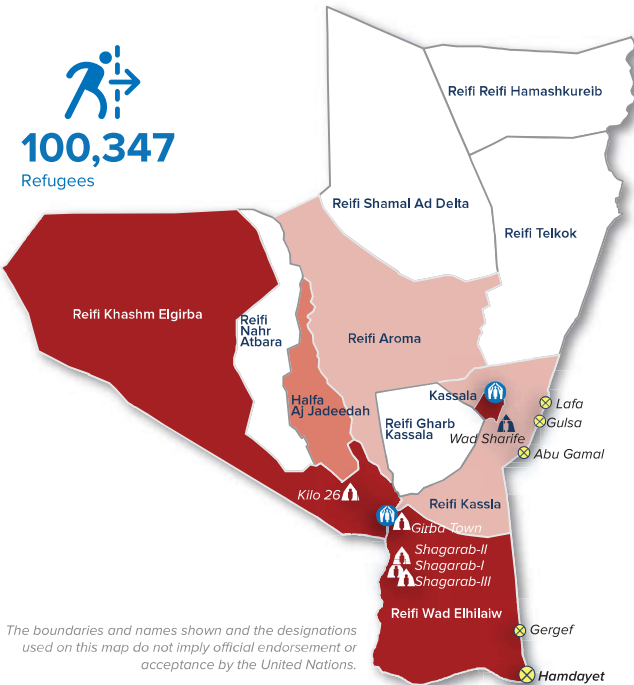
17 Partners

Delivering Refugee Response in Kassala State



- Associazione Italiana per la Solidarietà tra i Popoli (AISPO)
- CARE International Switzerland (CIS)
- Child Development Foundation (CDF)
- Cooperazione Internazionale (COOPI)
- Gesellschaft für Internationale Zusammenarbeit (GIZ)
- International Humanitarian and Charity Organization (IHCO)
- Muslim Aid- UK
- Plan International Sudan (PIS)
- Sudan Organization for Development (SOD)
- Sudanese Organization for Research and Development (SOR)
- Sudanese Red Crescent Society (SRCS)
- United Nations Development Program (UNDP)
- United Nations - World Food Programme (WFP)
- United Nations Population Fund (UNFPA)
- United Nations - World Health Organization (WHO)
- United Nations International Children's Emergency Fund (UNICEF)
- United Nations Industrial Development Organization (UNIDO)
- Welthungerhilfe (WHH)

Does What and Where



Locality	UN	Gov	INGO	NGO	WFP	SRCS	UNICEF	UNFPA	WHO	UNDP	UNIDO	WHH	Total
Halfa Aj Jadeedah	4	2	4	3	1	0	0	0	3	0	7		7
Reifi Aroma	1	2	5	3	4	2	0	0	3	0	9		9
Reifi Gharb Kassala	0	1	3	1	0	0	0	0	1	0	3		3
Reifi Kassla	6	4	6	5	3	3	0	0	3	0	13		13
Reifi Khashm Elgirba	7	3	5	5	3	3	0	0	6	0	13		13
Reifi Nahr Atbara	1	1	3	1	0	0	0	0	1	0	5		5
Reifi Hamashkureib	0	0	2	2	2	1	0	0	1	0	5		5
Reifi Shamal Ad Delta	0	2	6	2	3	2	0	0	3	0	9		9
Reifi Telkok	1	2	4	2	3	2	0	0	1	0	7		7
Reifi Wad Elhilaiw	6	3	5	5	3	2	1	1	4	0	11		11

Legend:

- UNHCR Sub-Office
- Refugee Camp
- Crossing Point

Per Sector

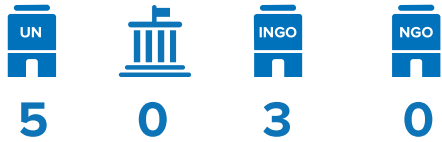
Protection	9	7
Education	5	1
Health	9	1
Nutrition	10	8
Food Security	8	0

Locality	Partner Coverage	Severity of Needs Scale	Icons
Halfa Aj Jadeedah	SOD, UNICEF, UNFPA, WFP PIS, UNICEF PIS, UNICEF, UNFPA, WHO UNICEF, WFP, WHO WFP COOPI, UNICEF, WFP	Very Low (1) Low (2) Moderate (3) High (4) Very High (5)	Protection Education Health Nutrition Food Security Livelihoods/Resilience Energy/Environment Shelter/NFI WASH CCCM Partner
Reifi Aroma	WFP PIS, UNICEF Muslim Aid, SRCS, UNICEF, UNFPA, WHO Muslim Aid, UNICEF, WFP COOPI, PIS, WFP, WHH COOPI, PIS COOPI, UNICEF, WFP		
Reifi Kassla	PIS, SOD, SRCS, UNICEF, UNFPA, WFP GIZ, PIS, SORD, UNICEF AISPO, PIS, SORD, SRCS, UNICEF, UNFPA, WHO Muslim Aid, SRCS, UNICEF, WFP, WHO SORD, UNIDO, WFP SORD, SRCS, UNIDO SRCS, UNICEF, WFP		
Reifi Gharb Kassala	UNICEF UNICEF, UNFPA, WHO UNICEF UNICEF		
Reifi Hamashkureib	UNFPA, WHO Muslim Aid, SORD SORD, WHH SORD		
Reifi Nahr Atbara	PIS PIS PIS, SRCS, UNFPA, WHO Muslim Aid PIS		
Reifi Shamal Ad Delta	PIS, UNICEF AISPO, Muslim Aid, SRCS, UNICEF, UNFPA, WHO AISPO, UNICEF COOPI, PIS, WHH COOPI, PIS, COOPI, PIS, UNICEF		
Reifi Telkok	SRCS SORD, UNICEF SRCS, UNICEF, UNFPA, WHO Muslim Aid, UNICEF SORD, SRCS, WHH SORD, SRCS UNICEF		
Reifi Khashm Elgirba	IHCO, Muslim Aid, PIS, SOD, UNICEF, UNFPA, WFP PIS, SORD, UNICEF IHCO, SRCS, UNICEF, UNFPA, WHO IHCO, SRCS, UNICEF, WFP, WHO SORD, SRCS, WFP SORD, SRCS, UNDP CIS, COOPI, IHCO, SRCS, UNICEF, WFP		

Who

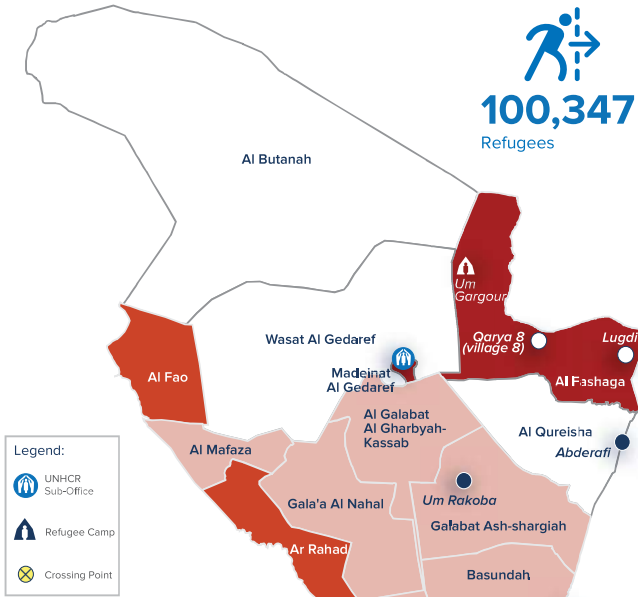
8 Partners

Delivering Refugee Response in Kassala State



- Associazione Italiana per la Solidarietà tra i Popoli (AISPO)
- Gesellschaft für Internationale Zusammenarbeit (GIZ)
- United Nations - World Food Programme (WFP)
- United Nations Population Fund (UNFPA)
- United Nations - World Health Organization (WHO)
- United Nations International Children's Emergency Fund (UNICEF)
- United Nations - International Organization for Migration (IOM)
- Welthungerhilfe (WHH)

Does What and Where



The boundaries and names shown and the designations used on this map do not imply official endorsement or acceptance by the United Nations.

Per Sector



Locality	UN	GOV	INGO	NGO	WFP	UNFPA	WHO	UNICEF	IOM	WHH	Total
Al Butanah	2	1	3	3	0	0	0	0	1	0	3
Al Fao	3	1	3	2	0	0	0	0	1	0	5
Al Fashaga	3	1	3	4	6	2	1	0	2	0	7
Al Galabat Al Gharbyah - Kassab	2	2	2	2	0	1	0	0	1	0	3
Al Mafaza	2	1	3	2	0	1	0	0	1	0	4
Al Qureisha	2	1	3	2	0	1	0	0	1	0	4
Ar Rahad	1	1	3	1	0	0	0	0	1	0	3
Basundah	1	1	3	1	0	0	0	0	1	0	3
Gala'a Al Nahal	2	2	2	1	0	0	0	0	1	0	3
Galabat Ash-Shargiah	3	2	4	2	0	1	0	0	1	0	4
Madeinat Al Gedaref	4	2	5	2	1	0	1	1	1	0	8
Wasat Al Gedaref	2	1	3	1	0	0	0	0	1	0	3

Legend for partner counts: No partner (white), 1-5 (light blue), 6-10 (medium blue), 11 and above (dark blue)

Locality	Partner Coverage	Locality	Partner Coverage
Al Fashaga	UNFPA, WFP, WHH GIZ, PIS, SORD, UNICEF UNICEF GIZ, UNICEF, WFP, WHH, WHO WFP, WHH WFP, WHH WHH UNICEF, WHH	Madeinat Al Gedaref	IOM, UNICEF, UNFPA, WFP GIZ, UNICEF AISPO, IOM, UNICEF, UNFPA, WHO UNICEF, WFP WFP WHH IOM UNICEF
Al Fao	UNICEF, UNFPA, WFP UNICEF UNICEF, UNFPA, WHO UNICEF, WFP UNICEF	Al Galabat Al Gharbyah - Kassab	UNICEF, WFP WFP, UNICEF UNICEF, WHO UNICEF, WFP WFP UNICEF
Al Mafaza	UNFPA, WFP UNICEF UNICEF, UNFPA, WHO UNICEF, WFP WFP UNICEF	Al Qureisha	UNFPA, WFP UNICEF UNICEF, UNFPA, WHO UNICEF, WFP WFP UNICEF
Galabat Ash-Shargiah	UNFPA, WFP UNICEF, WFP UNICEF, UNFPA, WHO UNICEF, WFP WFP UNICEF	Al Butanah	UNICEF, UNFPA UNICEF UNICEF, UNFPA, WHO UNICEF UNICEF
Ar Rahad	UNFPA UNICEF UNICEF, UNFPA, WHO UNICEF UNICEF	Basundah	UNFPA UNICEF UNICEF, UNFPA, WHO UNICEF UNICEF
Gala'a Al Nahal	UNICEF, WFP UNICEF, WFP UNICEF, WHO UNICEF UNICEF	Wasat Al Gedaref	UNICEF, UNFPA UNICEF UNICEF, UNFPA, WHO UNICEF UNICEF

Severity of Needs Scale



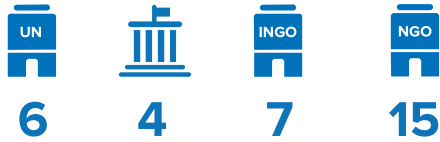
Icons

- Protection
- Education
- Health
- Nutrition
- Food Security
- Livelihoods /Resilience
- Energy /Environment
- Shelter/NFI
- WASH
- CCCM
- Partner
- United Nations
- Government
- National NGO
- International NGO
- Refugee

Who

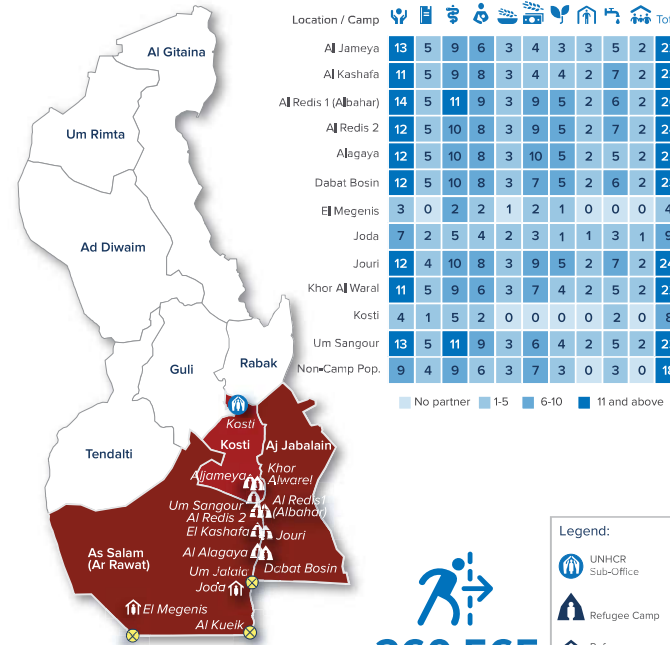
32 Partners

Delivering Refugee Response in White Nile State



- Raira Organization (RAIRA)
- Adventist Development and Relief Agency (ARDA)
- Al Masrar Charity Organization for Nomads Development and Environment Conservation (AIMASAR)
- ASSIST - Voluntary Humanitarian Assistance Program (ASSIST)
- CAFA Development Organization (CAFA)
- Catholic Agency For Overseas Development (CAFOD)
- Charity Organization For Rehabilitation And Development (CORD)
- Child Development Foundation (CDF)
- Commission Of Refugees (COR)
- Danish Red Cross (IFRC- DRC)
- Friends of Peace and Development Organization (FPDO)
- Global Aid Hand (GAH)
- Hope and Homes for Children (Hope Sudan)
- International Rescue Committee (IRC)
- Jasmar Human Security Organization (JASMAR)
- Médecins Sans Frontières - Spain (MSF-Spain)
- Nada El Azhar for Disaster Prevention and Sustainable Development (NADA)
- Plan International Sudan (PIS)
- Saharan International Development Organization (SIDO)
- SOS Sahel Sudan (SOS)
- Spanish Red Cross (IFRC-Spain)
- State Ministry of Education (SMoE)
- State Ministry of Health (SMoH)
- Sudanese Red Crescent Society (SRCS)
- United Mission on Relief and Development (UMORD)
- United Nations Development Program (UNDP)
- United Nations - World Food Programme (WFP)
- United Nations Population Fund (UNFPA)
- United Nations High Commissioner for Refugees (UNHCR)
- United Nations - World Health Organization (WHO)
- United Nations International Children's Emergency Fund (UNICEF)
- Water and Environmental Sanitation (WES)

Does What and Where



The boundaries and names shown and the designations used on this map do not imply official endorsement or acceptance by the United Nations.

260,565 Refugees

Legend:

- UNHCR Sub-Office
- Refugee Camp
- Refugee Reception Center
- Crossing Point

Per Sector



Location / Camp	UN	Gov	INGO	NGO	Total
Kosti	4	1	5	2	12
El Megenis	3	0	2	2	7
Joda	7	2	5	4	18
Um Sangour	13	5	11	9	38
Non-Camp Pop.	9	4	9	6	28

Partner	Al Jameya	Al Kashafa	Al Redis 1 (Albahar)	Al Redis 2	Alagaya	Dabat Bosin	Jouri	Khor Al Waral
ARDA, CAFA, COR, IFRC- DRC, FPDO, IRC, NADA, PIS, SMoH, SRCS, UMORD, WFP, UNFPA	ARDA, AIMASAR, COR, SMoE, UMORD	ARDA, CAFA, COR, IFRC- DRC, FPDO, IRC, NADA, PIS, SRCS, WFP, UNHCR, UNFPA	ARDA, AIMASAR, COR, SMoE, UNHCR	ARDA, AIMASAR, COR, SMoE, UNHCR	ARDA, CAFA, COR, IFRC- DRC, FPDO, IRC, PIS, SMoH, SRCS, UNHCR, WFP, UNFPA	ARDA, CAFA, COR, IFRC- DRC, FPDO, IRC, NADA, SRCS, UNHCR, UNFPA, WFP	ARDA, AIMASAR, COR, SMoE, UNHCR	ARDA, CAFA, COR, IFRC- DRC, FPDO, IRC, PIS, SMoH, SRCS, UNHCR, UNFPA, WFP
CAFA, COR, IFRC- DRC, MSF-Spain, SMoE, UMORD, WHO, UNICEF, UNFPA	COR, MSF-Spain, SMoE, WFP, WHO, UNICEF	CAFA, COR, IFRC- DRC, MSF-Spain, PIS, SMoH, UMORD, WHO, UNICEF, UNFPA	CAFA, COR, IFRC- DRC, MSF-Spain, PIS, SMoH, UNHCR, UNICEF, UNFPA	CAFA, COR, IFRC- DRC, MSF-Spain, PIS, SMoH, WHO, UNHCR, UNICEF, UNFPA	CAFA, COR, IFRC- DRC, MSF-Spain, PIS, SMoH, WHO, UNHCR, UNICEF, UNFPA	CAFA, COR, IFRC- DRC, MSF-Spain, PIS, SMoH, UNHCR, UNICEF, UNFPA, WHO	CAFA, COR, IFRC- DRC, MSF-Spain, PIS, SMoH, UNHCR, UNICEF, UNFPA, WHO	CAFA, COR, IFRC- DRC, MSF-Spain, PIS, SMoH, UNHCR, UNICEF, UNFPA, WHO
SRCS, UMORD, WFP	SRCS, UMORD, WFP	SRCS, UNHCR	SRCS, UNHCR	SRCS, UNHCR	SRCS, UNHCR, WFP	SRCS, UNHCR, WFP	SRCS, UNHCR	SRCS, UNHCR, WFP
IFRC- DRC, FPDO, PIS, WFP	ASSIST, COR, MSF-Spain, PIS, SMoH, WFP, WHO, UNICEF	ASSIST, IFRC- DRC, FPDO, GAH, PIS, IFRC-Spain, SRCS, WFP, UNDP	ASSIST, COR, MSF-Spain, PIS, SMoH, SRCS, WFP, UNICEF	ASSIST, COR, MSF-Spain, PIS, SMoH, WFP, WHO, UNICEF	ASSIST, COR, MSF-Spain, PIS, SMoH, WFP, WHO, UNICEF	ASSIST, COR, MSF-Spain, PIS, SMoH, WFP, WHO, UNICEF	ASSIST, COR, MSF-Spain, PIS, SMoH, WFP, WHO, UNICEF	ASSIST, COR, MSF-Spain, PIS, SMoH, WFP, WHO, UNICEF
ARDA, PIS, UMORD, WFP	SRCS, UNHCR	ARDA, PIS, WFP, UNDP, UNHCR	ARDA, PIS, WFP, UNDP, UNHCR	ARDA, PIS, WFP, UNDP, UNHCR	SRCS, UNHCR, WFP	SRCS, UNHCR, WFP	SRCS, UNHCR	SRCS, UNHCR, WFP
COR, SRCS, UMORD	CAFOD, COR, SIDO, UMORD, WES	CAFOD, COR, PIS, SIDO, UNHCR, WES	CAFOD, COR, PIS, SIDO, UNHCR, WES	CAFOD, COR, PIS, SIDO, UNHCR, WES	CAFOD, COR, PIS, SIDO, UNHCR, WES	CAFOD, COR, PIS, SIDO, UNHCR, WES	CAFOD, COR, PIS, SIDO, UNHCR, WES	CAFOD, COR, PIS, SIDO, UNHCR, WES
CAFOD, COR, SIDO, UMORD, WES	COR, UMORD	COR, UNHCR	COR, UNHCR	COR, UNHCR	COR, UNHCR	COR, UNHCR	COR, UNHCR	COR, UNHCR

Severity of Needs Scale

- Very Low (1)
- Low (2)
- Moderate (3)
- High (4)
- Very High (5)

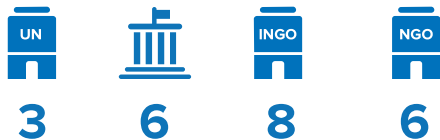
Icons

- Protection
- Education
- Health
- Nutrition
- Food Security
- Livelihoods/Resilience
- Energy/Environment
- Shelter/NFI
- WASH
- CCCM
- Partner
- United Nations
- Government
- National NGO
- International NGO
- Refugee

Who

23 Partners

Delivering Refugee Response in East Darfur State

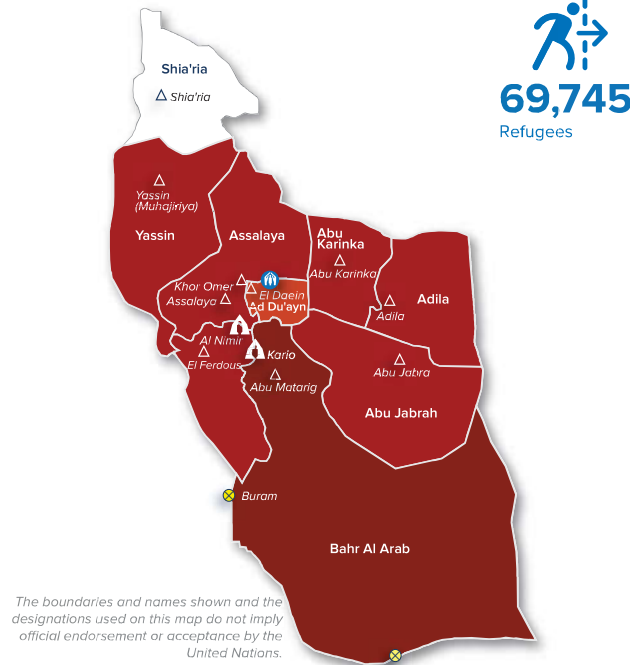


- Al Manar Voluntary Organization (AMVO)
- American Refugee Committee (ARC)
- CARE International Switzerland (CIS)
- Catholic Relief Services (CRS)
- Civil Registry
- Commission of Refugees (CoR)
- Global Aid Hand (GAH)
- Médecins Sans Frontières - Swiss (MSF-Swiss)
- Ministry of Social Affairs (MoSA)
- Mutawinat Benevolent Organization (MUTAWINAT)
- National Initiative for Development Organization (NIDO)
- Oxfam America (Oxfam)
- Relief International (RI)
- Riaheen El Salam for Maternity and Childhood (REMCO)
- State Council for Child Welfare (SCCW)
- State Ministry of Education (SMoE)
- State Ministry of Health (SMoH)
- Sudanese Red Crescent Society (SRCS)
- United Nations - World Food Programme (WFP)
- United Nations High Commissioner for Refugees (UNHCR)
- United Nations International Children's Emergency Fund (UNICEF)
- World Vision International (WVI)
- ZOA International Sudan (ZOA)

Per Sector



Does What and Where



The boundaries and names shown and the designations used on this map do not imply official endorsement or acceptance by the United Nations.

Locality	UNHCR Sub-Office	Refugee Camp	Refugee Settlement	Crossing Point	Total						
Abu Jabrah	6	4	6	4	2	2	0	2	1	0	16
Abu Karinka	6	4	4	2	2	3	1	2	2	0	15
Ad Du'ayn	0	0	3	3	0	1	0	0	0	0	0
Adila	7	4	3	1	2	2	0	2	1	0	18
Al Firdous	5	4	7	5	3	3	2	2	3	0	0
Assalaya	10	4	8	4	3	4	2	2	4	0	29
Bahr Al Arab	8	4	6	5	2	2	1	2	3	0	2
Shia'ria	0	0	2	2	0	0	0	0	0	0	0
Yassin	5	4	6	4	2	0	0	2	1	0	15
Camps											
Al Nimir Camp	5	2	4	2	2	1	1	2	4	0	13
Kario Camp	5	2	3	2	2	1	1	2	2	0	14

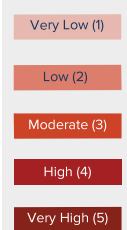


Locality	Partner Coverage	Locality	Partner Coverage
Abu Karinka	Civil Registry, COR, REMCO, SCCW, UNICEF, UNHCR GAH, SMoE, UNHCR, UNICEF ARC, CIS, MoSA, SMoH ARC, CSI SRCS, WFP Oxfam, SMoH, ZOA UNHCR SRCS, UNHCR CIS, Oxfam	Al Firdous	Civil Registry, COR, GAH, MUTAWINAT, UNHCR GAH, SMoE, UNHCR, UNICEF ARC, CRS, MoSA, RI, SMoH, UNICEF, WVI ARC, CRS, MoSA, RI, UNICEF, WVI CRS, SRCS, WFP ARC, CRS, Oxfam SRCS, UNHCR CIS, Oxfam, UNHCR
Assalaya	Civil Registry, COR, GAH, MUTAWINAT, SCCW, UNHCR, UNICEF GAH, SMoE, UNHCR, UNICEF ARC, CIS, CRS, MoSA, RI, SMoH, UNHCR, WVI ARC, CIS, CRS, RI, UNHCR, WVI CRS, SRCS, WFP ARC, CRS, Oxfam, ZOA CRS, UNHCR SRCS, UNHCR ARC, CIS, Oxfam, UNHCR	Bahr Al Arab	Civil Registry, COR, GAH, MUTAWINAT, REMCO, SCCW, UNHCR, UNICEF GAH, SMoE, UNHCR, UNICEF ARC, CIS, MSF-Swiss, MoSA, RI, SMoH ARC, CIS, MSF-Swiss, NIDO, RI SRCS, WFP Oxfam, ZOA UNHCR SRCS, UNHCR CIS, Oxfam, UNHCR
Abu Jabrah	Civil Registry, COR, REMCO, SCCW, UNHCR, UNICEF GAH, SMoE, UNHCR, UNICEF ARC, MoSA, RI, SMoH, UNICEF, WVI ARC, RI, UNICEF, WVI SRCS, WFP ARC, ZOA SRCS, UNHCR ARC	Adila	Civil Registry, COR, MUTAWINAT, REMCO, SCCW, UNHCR, UNICEF GAH, SMoE, UNHCR, UNICEF ARC, MOSA, SMoH ARC SRCS, WFP ARC, ZOA SRCS, UNHCR ARC
Yassin	Civil Registry, COR, SCCW, UNHCR, UNICEF GAH, SMoE, UNHCR, UNICEF ARC, CIS, MoSA, SMoH, UNICEF, WVI ARC, CIS, UNICEF, WVI SRCS, WFP SRCS, UNHCR Oxfam	Ad Du'ayn	AMVO, CRS, UNHCR AMVO, CIS, UNHCR CRS
		Shia'ria	UNICEF, WVI UNICEF, WVI

Camps

Camp	Partner Coverage	Camp	Partner Coverage
Al Nimir Camp	Civil Registry, COR, GAH, MUTAWINAT, UNHCR GAH, UNHCR ARC, MoSA, SMoH, UNHCR ARC, UNHCR SRCS, WFP Oxfam UNHCR SRCS, UNHCR ARC, CIS, Oxfam, UNHCR	Kario Camp	Civil Registry, COR, GAH, MUTAWINAT, UNHCR GAH, UNHCR MSF-Swiss, MoSA, SMoH MSF-Swiss, NIDO SRCS, WFP ZOA UNHCR SRCS, UNHCR CIS, UNHCR

Severity of Needs Scale



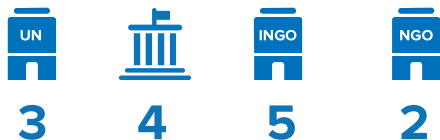
Icons

- Protection
- Education
- Health
- Nutrition
- Food Security
- Livelihoods /Resilience
- Energy /Environment
- Shelter/NFI
- WASH
- CCCM
- Partner
- United Nations
- Government
- National NGO
- International NGO
- Refugee

Who

14 Partners

Delivering Refugee Response in South Darfur State

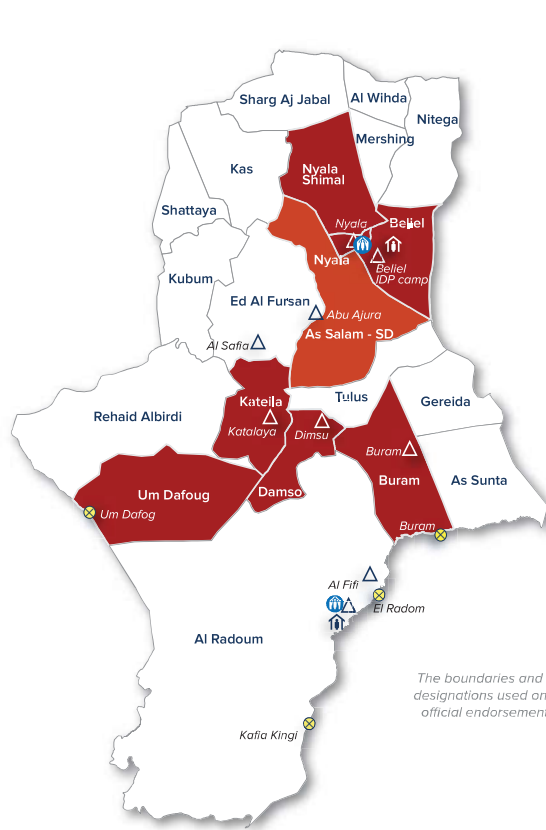


- American Refugee Committee (ARC)
- Commission Of Refugees (COR)
- Global Aid Hand (GAH)
- Ministry of Social Affairs (MoSA)
- National Initiative for Development Organization (NIDO)
- Norwegian Church Aid (NCA)
- Oxfam America (Oxfam)
- State Ministry of Health (SMoH)
- United Methodist Committee on Relief (UMCOR)
- United Nations - World Food Programme (WFP)
- United Nations High Commissioner for Refugees (UNHCR)
- United Nations International Children's Emergency Fund (UNICEF)
- Water and Environmental Sanitation (WES)
- World Vision International (WVI)

Per Sector



Does What and Where



50,742 Refugees

The boundaries and names shown and the designations used on this map do not imply official endorsement or acceptance by the United Nations.

Locality	UNHCR Sub-Office	Refugee Settlement	Refugee Reception Center	Crossing Point	Total						
Al Radoum	3	2	2	3	2	0	0	2	5	0	8
As Salam - SD	1	1	1	1	0	0	0	1	2	0	5
Beljel	4	2	2	1	2	0	0	2	4	0	10
Buram	1	1	1	1	0	0	0	1	3	0	6
Damso	1	1	2	1	0	0	0	1	2	0	4
Nyala	2	1	1	1	0	1	0	0	0	0	4
Um Dafoug	1	0	1	1	1	1	0	1	0	0	4

Legend:

- UNHCR Sub-Office
- Refugee Settlement
- Refugee Reception Center
- Crossing Point

Locality	Partner Coverage	Severity of Needs Scale
Al Radoum	GAH, MoSA, UNHCR GAH, UNICEF NCA, WVI NCA, UNICEF, WVI NCA, WFP NCA, WVI NCA, UNHCR, UNICEF, WES, WVI	Very Low (1) Low (2) Moderate (3) High (4) Very High (5)
As Salam - SD	GAH GAH SMoH SMoH NCA UNHCR, WES	
Beljel	COR, GAH, MoSA, UNHCR GAH, UNICEF NCA, WVI NCA NCA, WFP NCA, UNHCR ARC, NCA, Oxfam, WVI	
Buram	GAH GAH NIDO NIDO NCA UMCOR, UNHCR, WVI	
Damso	GAH GAH ARC, WVI WVI NCA ARC, WVI	
Nyala	COR, UNHCR WVI SMoH SMoH WVI	
Um Dafoug	COR WVI WVI NCA NCA NCA	

Severity of Needs Scale

Very Low (1)
Low (2)
Moderate (3)
High (4)
Very High (5)

Icons

- Protection
- Education
- Health
- Nutrition
- Food Security
- Livelihoods/Resilience
- Energy/Environment
- Shelter/NFI
- WASH
- CCCM
- Partner
- United Nations
- Government
- National NGO
- International NGO
- Refugee

Who

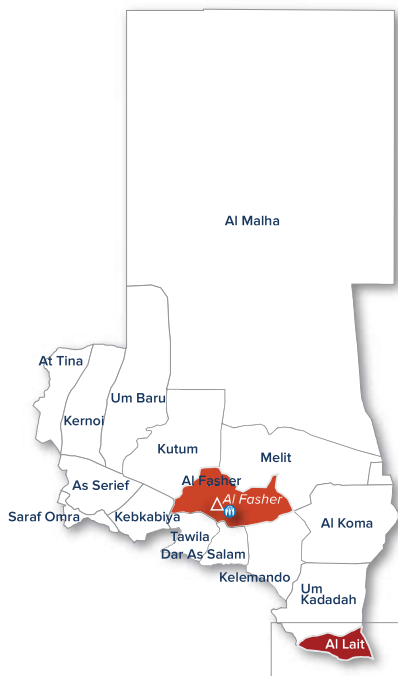
36 Partners

Delivering Refugee Response in North Darfur State



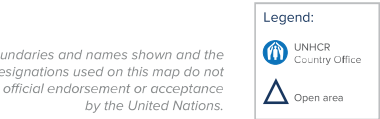
- Africa Humanitarian Action (AHA)
- Anhar for Peace Development work Organization (ANHAR)
- Auttach Organization (AUTTACH)
- Cooperation for Development Organization (CDO)
- Cooperazione Internazionale (COOPI)
- Darfur Development and Reconstruction Agency (DDRA)
- El Emar Charitable Development Organization (ECDO)
- Global Aid Hand (GAH)
- Green Peace Organization Habitation and Development (GPDO)
- Humanitarian Aid and Development (HAD)
- Mutawinat Benevolent Organization (MUTAWINAT)
- Nada El Azhar for Disaster Prevention and Sustainable Development (NADA)
- National Organization for Humanitarian Services (NOHS)
- National Planning Organization (NPO)
- Oxfam America (Oxfam)
- Patients Health Fund (PHF)
- Plan International Sudan (PIS)
- Practical Action (PA)
- Relief International (RI)
- Rural Development Network (RDN)
- Saecker Development Organization (SAEKER)
- Sahari Organization for Development (SAHARI)
- Save the Children International (SCI)
- Sudanese Red Crescent Society (SRCS)
- Sustainable Action Group (SAG)
- United Nations - Food and Agriculture Organization (FAO)
- United Nations Population Fund (UNFPA)
- United Nations International Children's Emergency Fund (UNICEF)
- United Nations - International Organization for Migration (IOM)
- United Nations - World Health Organization (WHO)
- Voluntary Community Development Organization (VCDO)
- Voluntary Network for Rural Helping and Development (VNRHD)
- Welthungerhilfe (WHH)
- ZOA International Sudan (ZOA)
- Zulfa Development and Peace Organization (ZULFA)

Does What and Where



24,473 Refugees

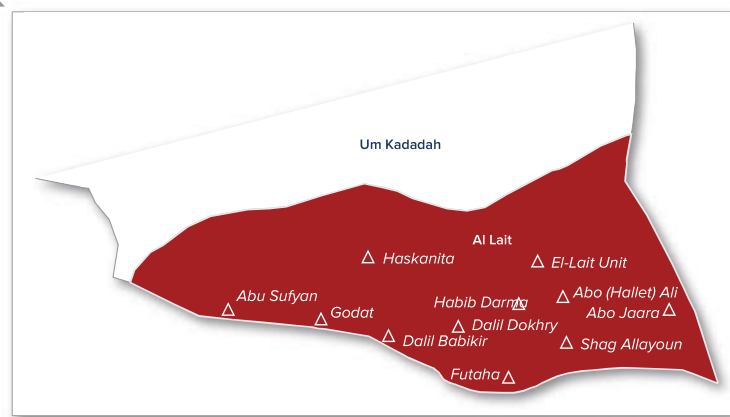
Locality	Protection	Education	Health	Nutrition	Food Security	Livelihoods/Resilience	Energy/Environment	Shelter/NFI	WASH	CCCM	Partner	UN	Government	National NGO	International NGO	Refugee	Total
Al Fasher	7	7	5	2	16	16	0	6	15	0	34						
Al Lait	6	3	4	5	8	7	0	4	6	0	17						



The boundaries and names shown and the designations used on this map do not imply official endorsement or acceptance by the United Nations.

Per Sector

Protection	8	Education	20
Health	7	Nutrition	0
Nutrition	7	Food Security	7
Food Security	6	Livelihoods/Resilience	18
Livelihoods/Resilience	20	Energy/Environment	0



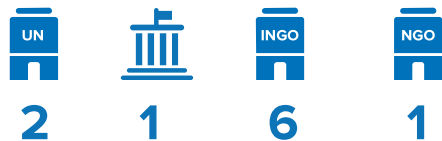
Locality	Partner Coverage	Severity of Needs Scale
Al Fasher	GAH, MUTAWINAT, NADA, PIS, SCI, UNICEF, UNFPA AUTTACH, GAH, GPDO, HAD, NOHS, SCI, UNICEF ANHAR, IOM, PHF, UNICEF, WHO PHF, UNICEF AHA, DDRA, ECDO, GPDO, Oxfam, PIS, PA, SAEKER, SAHARI, SCI, SAG, FAO, WFP, WHH, ZOA, ZULFA AHA, DDRA, ECDO, GPDO, Oxfam, PIS, PA, SAEKER, SAHARI, SCI, SAG, FAO, WFP, WHH, ZOA, ZULFA NOHS, RDN, SCI, SRCS, IOM, VCDO GPDO, HAD, NOHS, NPO, Oxfam, PIS, PA, RI, SCI, SAG, IOM, UMICEF, VCDO, VNRHD, ZULFA	Very Low (1) Low (2) Moderate (3) High (4) Very High (5)
Al Lait	AUTTACH, GAH, MUTAWINAT, NADA, UNICEF, UNFPA AUTTACH, GAH, UNICEF CDO, RI, UNICEF, WHO CDO, SAHARI, UNICEF, VCDO, WFP CDO, COOPI, RI, SAHARI, SRCS, FAO, WFP, WHH CDO, COOPI, RI, SAHARI, SRCS, FAO, WHH SRCS, IOM, VCDO, WHH COOPI, RI, SAHARI, UNICEF, VCDO, WHH	Very Low (1) Low (2) Moderate (3) High (4) Very High (5)

- Severity of Needs Scale
- Very Low (1)
 - Low (2)
 - Moderate (3)
 - High (4)
 - Very High (5)
- Icons
- Protection
 - Education
 - Health
 - Nutrition
 - Food Security
 - Livelihoods/Resilience
 - Energy/Environment
 - Shelter/NFI
 - WASH
 - CCCM
 - Partner
 - United Nations
 - Government
 - National NGO
 - International NGO
 - Refugee

Who

10 Partners

Delivering Refugee Response in Khartoum State

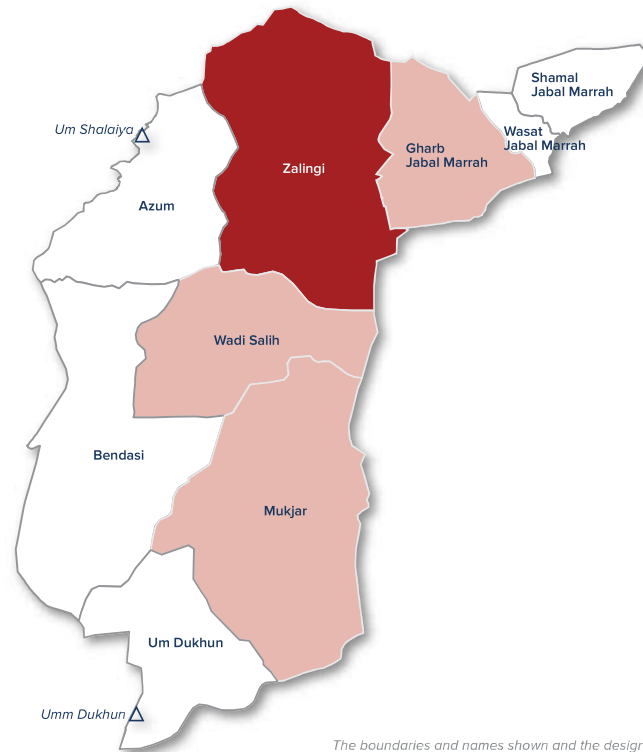


- Danish Refugee Council (DRC)
- Catholic Relief Services (CRS)
- Commission of Refugees (CoR)
- International Medical Corps (IMC)
- Save the Children International (SCI)
- Talaweit Development Organization (TOD)
- Triangle Génération Humanitaire (TGH)
- United Nations High Commissioner for Refugees (UNHCR)
- United Nations - World Food Programme (WFP)
- World Relief (WR)

Per Sector



Does What and Where



The boundaries and names shown and the designations used on this map do not imply official endorsement or acceptance by the United Nations.

Locality	UN	Gov	INGO	NGO	Food	Health	Education	Protection	Refugee	Total	
Azum	3	2	2	3	2	2	0	1	2	0	5
Umm Dukhun	5	3	2	2	1	1	0	2	1	0	8
Camp	UN	Gov	INGO	NGO	Food	Health	Education	Protection	Refugee	Total	
Umm Dukhun Camp	5	3	1	1	1	1	0	2	1	0	8
Um Shalaya Camp	3	2	2	3	2	2	0	1	2	0	5

Legend: No partner, 1-5, 6-10, 11 and above

10,085 Refugees

Locality	Partner Coverage	Severity of Needs Scale
Azum	CoR, SCI, UNHCR SCI, UNHCR SCI, UNHCR SCI, UNHCR, WFP CRS, WFP SCI UNHCR SCI, UNHCR	Very Low (1) Low (2) Moderate (3) High (4) Very High (5)
Umm Dukhun	DRC, CoR, TOD, UNHCR, WR DRC, CRS, TOD CRS, IMC CRS, IMC CRS TOD DRC, TGH TGH	Icons: Protection, Education, Health, Nutrition, Food Security, Livelihoods/Resilience, Energy/Environment, Shelter/NFI, WASH, CCCM, Partner, United Nations, Government, National NGO, International NGO, Refugee

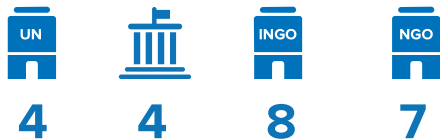
Camps

Camp	Partner Coverage
Umm Dukhun Camp	DRC, CoR, TOD, UNHCR, WR DRC, CRS, TOD IMC IMC CRS TOD DRC, TGH TGH
Um Shalaya Camp	CoR, SCI, UNHCR SCI, UNHCR SCI, UNHCR, WFP CRS, WFP SCI, UNHCR UNHCR SCI, UNHCR

Who

23 Partners

Delivering Refugee Response in South Kordofan State

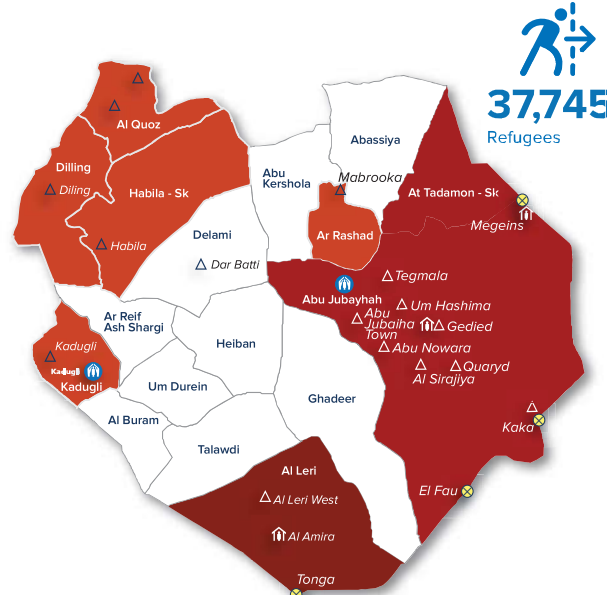


- Al Manar Voluntary Organization (AMVO)
- ASSIST - Voluntary Humanitarian Assistance Program (ASSIST)
- CARE International Switzerland (CIS)
- Commission of Refugees (CoR)
- Concern Worldwide (CWW)
- El Ruhama for development and humanitarian aid (El Ruhama)
- Global Aid Hand (GAH)
- Global Health Foundation (GHF)
- International Medical Corps (IMC)
- Islamic Relief Worldwide (IRW)
- Médecins Sans Frontières - Spain (MSF-Spain)
- Ministry of Social Affairs (MOSA)
- Mutawinat Benevolent Organization (MUTAWINAT)
- Near East Foundation (NEF)
- Save the Children International (SCI)
- State Ministry of Health (SMOH)
- Sudanese Red Crescent Society (SRCS)
- United Nations - Food and Agriculture Organization (FAO)
- United Nations High Commissioner for Refugees (UNHCR)
- United Nations International Children's Emergency Fund (UNICEF)
- United Nations - World Food Programme (WFP)
- Water and Environmental Sanitation (WES)
- World Vision International (WVI)

Per Sector



Does What and Where



The boundaries and names shown and the designations used on this map do not imply official endorsement or acceptance by the United Nations.

Locality	UNHCR Sub-Office	Refugee Settlement	Refugee Reception Center	Crossing Point	Total						
Abassiya	1	0	3	3	2	3	1	0	2	0	7
Abu Jubayhah	8	3	6	6	2	1	2	2	3	0	15
Abu Kershola	3	1	1	1	2	1	0	0	1	0	4
Al Leri	5	2	2	3	1	1	1	2	3	0	9
Ar Rashad	3	2	3	3	1	1	0	0	1	0	5
Ar Reif Ash Shargi	0	0	1	1	1	1	0	0	0	0	2
At Tadamon - SK	0	1	1	1	1	0	0	0	0	0	4
Delami	0	0	0	0	1	0	0	1	0	0	2
Dilling	6	1	4	3	3	1	1	2	2	0	12
Ghadeer	0	0	0	0	1	0	0	0	0	0	1
Habila - SK	4	1	4	6	3	1	0	2	1	0	11
Kadugli	5	2	2	3	2	2	1	1	3	0	8
Talawdi	3	0	3	3	1	0	0	2	0	0	5

Legend:
 UNHCR Sub-Office
 Refugee Settlement
 Refugee Reception Center
 Crossing Point

■ No partner ■ 1-5 ■ 6-10 ■ 11 and above

Locality	Who	Does What	Where	Severity of Needs Scale
Abassiya	ASSIST, CIS, IMC, IRW, WFP, ASSIST, FAO, WVI, ASSIST, CIS		Abu Kershola	Very Low (1)
Abu Jubayhah	ASSIST, COR, GAH, MoSA, MUTAWINAT, SCI, UNHCR, UNICEF, CWW, MSF-Spain, SCI, SMOH, UNHCR, UNICEF, NEF, FAO, FAO, UNHCR, SRCS, UNHCR, UNHCR, UNICEF, WES		Dilling	Low (2)
Al Leri	COR, MoSA, MUTAWINAT, UNHCR, UNICEF, UNHCR, UNICEF, UNHCR, UNICEF, NEF, UNHCR, UNICEF, NEF, UNHCR, UNICEF, NEF, UNHCR, UNICEF, El Ruhama, UNHCR, SRCS, UNHCR, UNHCR, UNICEF, WES		Kadugli	Moderate (3)
Ar Rashad	AMVO, SCI, WVI, SCI, WVI, AMVO, CIS, SCI, AMVO, CIS, SCI, WFP, WFP		Talawdi	High (4)
Ar Reif Ash Shargi	IMC, IMC, WFP, WFP		At Tadamon - SK	Very High (5)
Habila - SK	COR, MOSA, SCI, UNHCR, UNHCR, IMC, MSF-Spain, SCI, UNHCR, CIS, IMC, NEF, SCI, WFP, UNHCR, NEF, FAO, WFP, FAO, SRCS, UNHCR, UNHCR		Delami	Icons
			Ghadeer	Protection, Education, Health, Nutrition, Food Security, Livelihoods/Resilience, Energy/Environment, Shelter/NFI, WASH, CCCM, Partner, United Nations, Government, National NGO, International NGO, Refugee

Who

13 Partners

Delivering Refugee Response in West Kordofan State

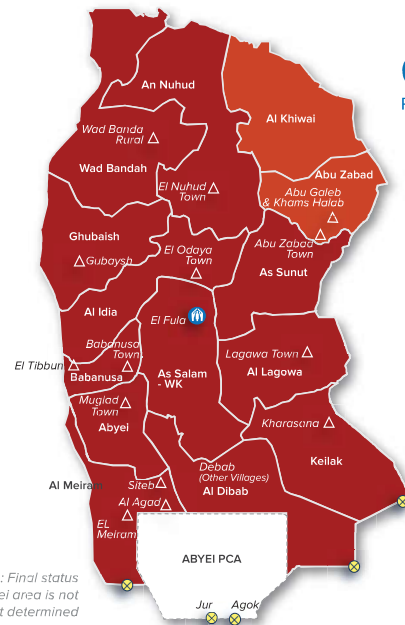


- Commission of Refugees (CoR)
- Concern Worldwide (CWW)
- Global Aid Hand (GAH)
- Islamic Relief Worldwide (IRW)
- Marrif Organization (MARRIF)
- Ministry of Social Affairs (MOSA)
- State Ministry of Health (SMOH)
- Sudanese Red Crescent Society (SRCS)
- United Nations - Food and Agriculture Organization (FAO)
- United Nations High Commissioner for Refugees (UNHCR)
- United Nations International Children's Emergency Fund (UNICEF)
- United Nations - World Food Programme (WFP)
- Water and Environmental Sanitation (WES)

Per Sector



Does What and Where



Abyei region: Final status of the Abyei area is not yet determined

The boundaries and names shown and the designations used on this map do not imply official endorsement or acceptance by the United Nations.

	UN	Govt	INGO	NGO	Health	Food	Shelter	WASH	CCCM	Total
Abyei	5	1	3	4	3	2	0	2	2	11
Al Dibab	3	0	0	1	1	0	0	2	0	4
Al Idlia	4	0	2	3	3	2	0	2	2	10
Al Khiwai	0	0	0	1	1	0	0	1	0	2
Al Lagowa	0	0	0	0	0	0	0	1	0	1
Al Meiram	6	2	3	4	4	3	0	2	5	13
An Nuhud	4	0	2	3	3	2	0	2	1	9
As Salam - WK	5	0	1	3	3	2	0	2	1	11
As Sunut	0	0	0	0	0	0	0	1	0	1
Babanusa	5	0	3	3	3	2	0	2	3	11
Ghubaish	2	0	3	2	1	1	0	1	2	5
Kellak	4	3	5	5	4	3	0	2	3	12

Legend: No partner (white), 1-5 (light blue), 6-10 (medium blue), 11 and above (dark blue)

Legend:
UNHCR Sub-Office
Refugee Settlement
Crossing Point

District	Partner Coverage	Partner Coverage	Severity of Needs Scale
Abyei	COR, GAH, MOSA, UNHCR, UNICEF UNICEF CWW, SMoH, UNICEF CWW, MARRIF, SMoH, WFP CWW, MARRIF, WFP CWW, WFP SRCS, UNHCR UNICEF, WES	Al Idlia	COR, GAH, UNHCR, UNICEF SMoH, UNICEF SMoH, MARRIF, WFP FAO, MARRIF, WFP FAO, WFP SRCS, UNHCR UNICEF, WES
Al Meriam	COR, GAH, MoSA, SRCS, UNHCR, UNICEF IRW, UNICEF CWW, SMoH, UNICEF CWW, MARRIF, SMoH, WFP CWW, MARRIF, FAO, WFP CWW, FAO, WFP SRCS, UNHCR CWW, IRW, MoSA, UNICEF, WES	An Nuhud	COR, GAH, UNHCR, UNICEF SMoH, UNICEF MARRIF, SMoH, WFP FAO, MARRIF, WFP FAO, WFP SRCS, UNHCR UNICEF
As Salam - WK	COR, GAH, MoSA, UNHCR, UNICEF SMoH MARRIF, SMoH, WFP FAO, MARRIF, WFP FAO, WFP SRCS, UNHCR WES	Babanusa	COR, GAH, MoSA, UNHCR, UNICEF MoSA, SMoH, UNICEF MARRIF, SMoH, WFP FAO, MARRIF, WFP FAO, WFP SRCS, UNHCR MoSA, UNICEF, WES
Ghubaish	UNICEF, UNICEF CWW, SMoH, UNICEF CWW, SMoH CWW UNHCR UNICEF, WES	Kellak	COR, GAH, UNHCR, UNICEF GAH, IRW, UNHCR CWW, GAH, MARRIF, SMoH, UNICEF CWW, GAH, MARRIF, WFP CWW, FAO, MARRIF, WFP SRCS, UNHCR IRW, UNICEF, WES
Al Dibab	MoSA, SRCS, UNHCR MARRIF MARRIF SRCS, UNHCR	Al Khiwai	MARRIF MARRIF SRCS
Al Lagowa	SRCS	As Sunut	SRCS

Severity of Needs Scale

- Very Low (1)
- Low (2)
- Moderate (3)
- High (4)
- Very High (5)

Icons

- Protection
- Education
- Health
- Nutrition
- Food Security
- Livelihoods /Resilience
- Energy /Environment
- Shelter/NFI
- WASH
- CCCM
- Partner
- United Nations
- Government
- National NGO
- International NGO
- Refugee