



Labourers building a bridge, as one of the projects identified by community members in C21 through the ongoing community led projects © UNHCR/Rimi Akther

FIELD & SITE MANAGEMENT OBJECTIVES

- 1 Coordinate and monitor field activities comprehensively addressing them or reaching out to responsible sectors/units
- 2 Continued implementation of the **Capacity Sharing Initiative (CSI)** and remote management tool
- 3 Provide an efficient and effective delivery of **CRIs, LPGs**, and other distributions to the persons of concern
- 4 Ensure that relocation of refugees is organised and implemented in line with protection standards
- 5 Prepare and respond to any emergency need caused by weather related events and other emergency situations such as **COVID-19**
- 6 Promote **community representation** structures for refugee camp and block committees

PROGRESS (SEPTEMBER - OCTOBER 2020)

Community-Led Projects (CLP)- Out of the total 435 schemes identified for implementation, 267 (61%) have been completed. The CLP schemes include Care and Maintenance of camps infrastructure such as (not limited to) pathways, bamboo bridges facilitating access to shelters, and communal facilities. The refugees conducted project identification through organized Focus Groups Discussions (FGDs) of male, female, and youth populations. Refugees are also involved as laborers, hence the schemes create an income source. The CLP schemes are centered on Age, Gender, and Diversity (AGD representation), allowing refugees of all groups to identify priority needs and lead in the project implementation, hence building ownership.

Distribution and Pop-up Store- The piloting of the Pop-up store concept at C4X DP was launched on 28 October 2020 following community consultations. Pop-up store allows refugees to assess their own needs and spend points (based on family size) to receive their choice of NFI from the list of about 47 household items to cover basic needs. 667 families are targeted for the pilot exercise.

Resumption of LPG Distribution for the Host Community (HC)- LPG distribution resumed in the HC areas in October. UNHCR FSMU and partner BDRCS have managed to reach 11,959 HC families by end of October.

Capacity Sharing Initiative (CSI) phase II- CSI phase II dubbed as "Towards Nationalization" resumed with the CSI working-group developing a work plan to augment CSI activities, commencing with an evaluation of the past CSI project. Additionally, the CSI training tracker that reflects the existing training gaps among CiC staff, Site Management (SM) staff, and pending training has been updated.

CHALLENGES

- Covid-19 continued to pose challenges. Camp coordination activities and community consultations could only be held on a limited scale. Given the camp population, maintaining physical distance in distribution sites is an on-going challenge, especially during power/network downtimes and heavy rain during monsoon. CSI and LPG both had to be postponed and only resumed in late October.
- An estimated 500 HHs are expected to be relocated due to the upcoming ADB and WB road expansions. However, there is not enough shelter or space to accommodate all displaced families.

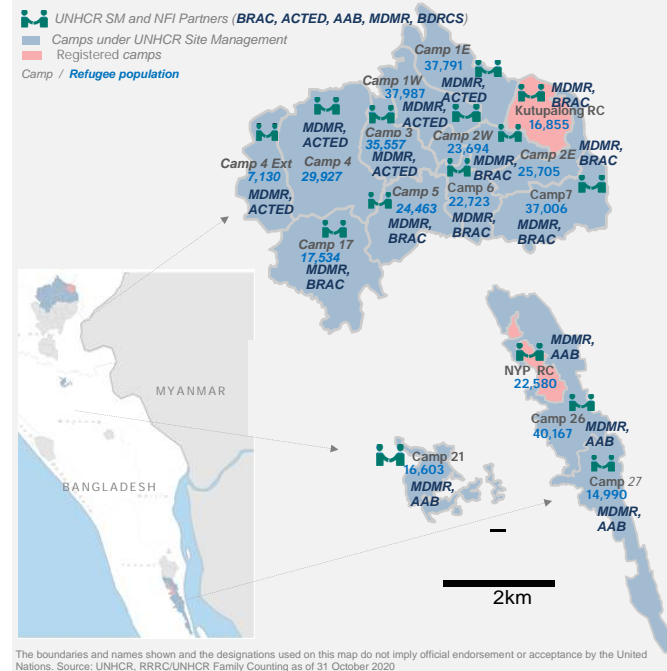
WAY FORWARD

- ✓ Once all CLP schemes are completed, they will be evaluated by UNHCR jointly with refugee community, CiCs, and SMS partners and SMS volunteers of the project. The feedback from evaluation participants will be used to capture impact of the completed schemes, understand implementation challenges, as well elicited views will be fed into planning, scaling-up, and adjusting the scope of future projects.
- ✓ For distribution activities, UNHCR will implement winterization distribution in December. With the culmination of the Pop-up store pilot project, an evaluation will be conducted to decide on further scale up.
- ✓ The different training modules under CSI will be shared with RRRRC for review and feedback. Both the evaluation survey and the training tracker will inform the re-launch of the CSI modular training targeting the CiC support staff. The CiC/ACiC orientation and ToTs are set to begin in early 2021.
- ✓ FSMU will continue to implement the Remote SMS Monitoring System; putting community at the centre of reporting.

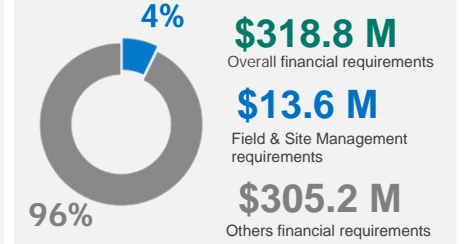
KEY FIGURES (Cumulative from January 2020)



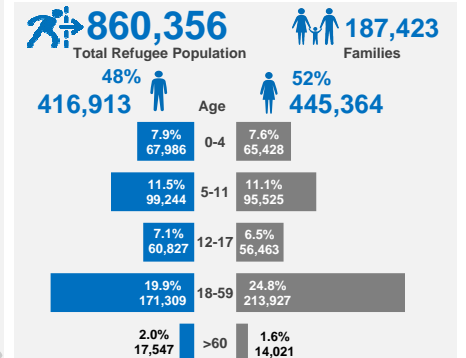
GEOGRAPHIC SITUATION & PARTNERS



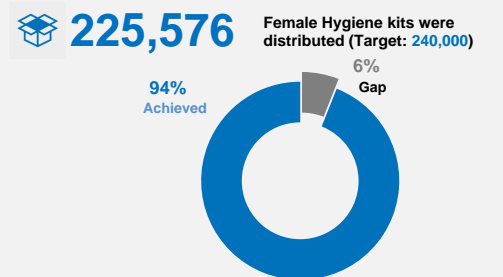
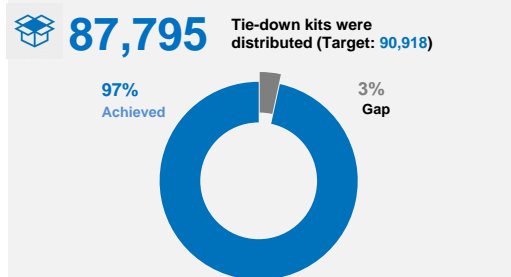
FINANCIAL REQUIREMENTS



POPULATION DATA



DISTRIBUTION STATUS 2020



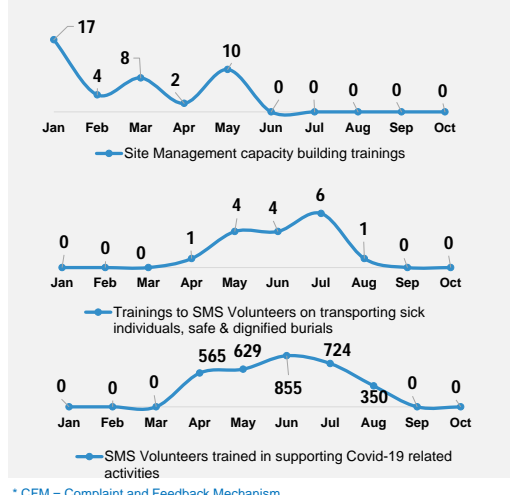
ACHIEVEMENTS (SEPTEMBER & OCTOBER)

- 29 camp-level coordination meetings with CiCs
- 1,846 remote submissions to Remote Management System
- 594 problems identified related to service monitoring
- 80% CFM* desk functioning
- 549 incident assessment reports submitted including affected households and damaged infrastructure number
- 157,258 refill distributed to refugees
- 114,107 households received bath soaps and laundry soaps

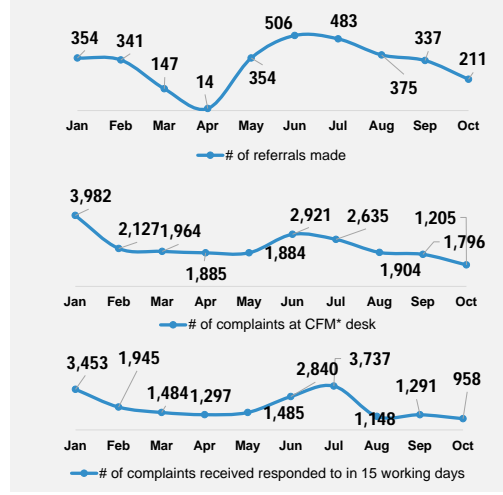
PROGRESS AGAINST 2020 TARGETS



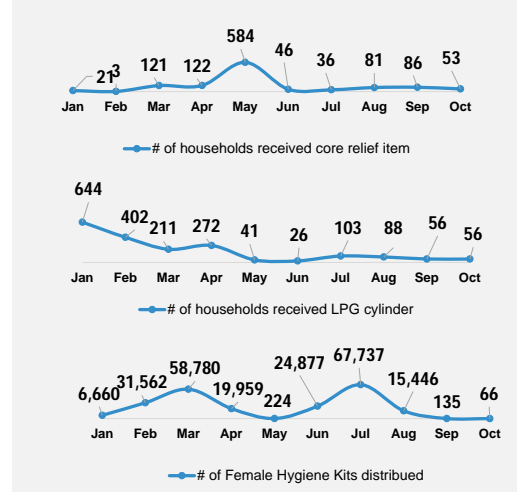
TRAINING TRENDS



REFERRAL TRENDS



DISTRIBUTION TRENDS



THANK YOU
 UNHCR's humanitarian response in Bangladesh is made possible thanks to the generous support of major donors who have contributed unrestricted funding to UNHCR's global operations, and to donors who have generously contributed directly to UNHCR Bangladesh operations. In 2020, continued generous support has been received from: Australia, Canada, China, Denmark, the European Union, France, Germany, Ireland, Italy, Japan, the Republic of Korea, the Netherlands, New Zealand, Norway, Sweden, Switzerland, the United Kingdom, and the United States of America. UNHCR is sincerely grateful for the additional support received from many individuals, foundations, and companies worldwide including Bill & Melinda Gates Foundation, CERF, Education Cannot Wait, and Thani Bin Abdullah Bin Thani Al-Thani Humanitarian Fund.