

In Rakhine State, over 80,000 persons remain displaced as of 31 July 2021 in ten townships as a result of clashes between the Arakan Army and the Myanmar Armed Forces. UNHCR, in collaboration with partners and other UN agencies, has responded to the humanitarian needs and extended its assistance to affected communities. UNHCR non-food items and emergency shelter support have been provided to some 45,799 affected persons from 10,993 households in 2021 thus far, building on the 47,385 persons and 9,874 households reached in 2020.

Particular effort has been made to provide support linked to the evolving COVID-19 situation through the distribution of PPE as well as awareness raising efforts. Access to some sites remains limited, for UNHCR and partners, particularly in more rural areas, a situation which has been further exacerbated by COVID-19.

Population Reached

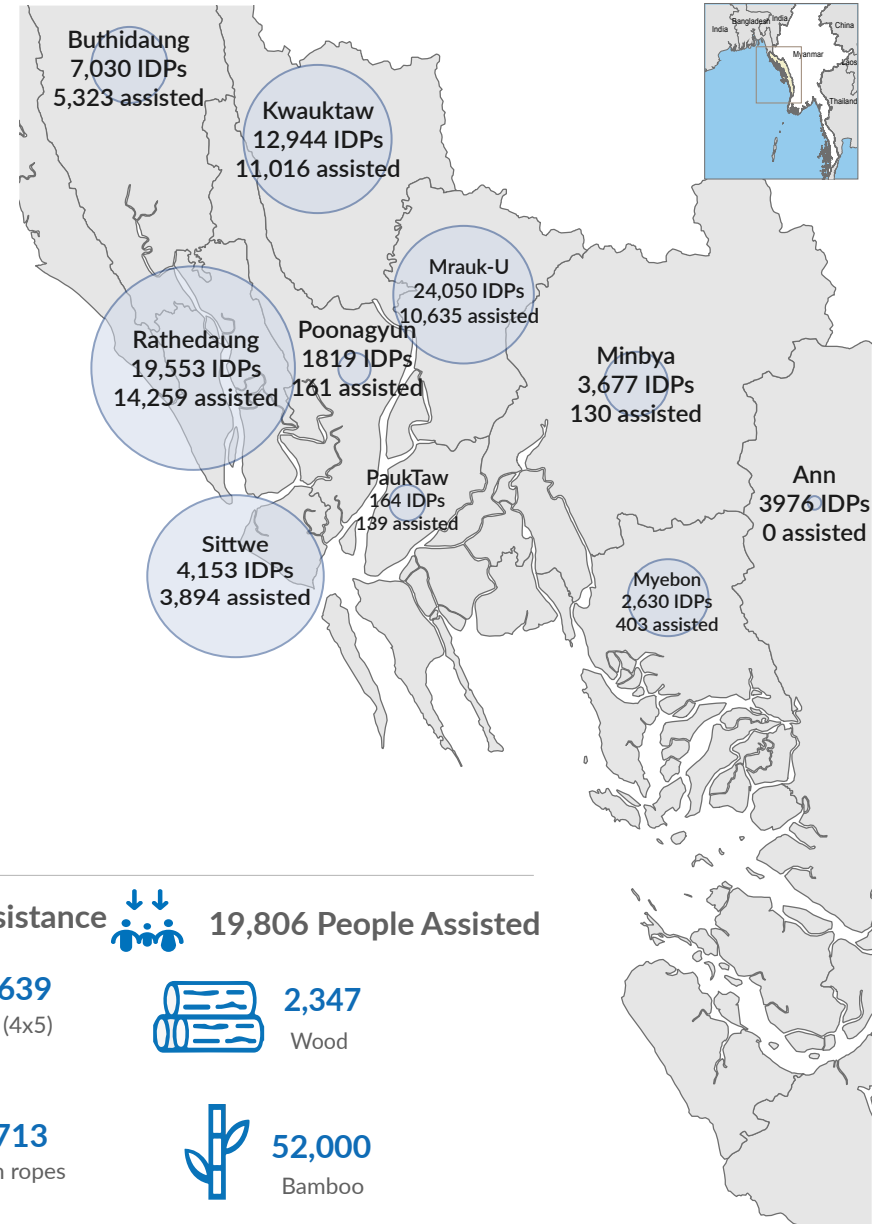
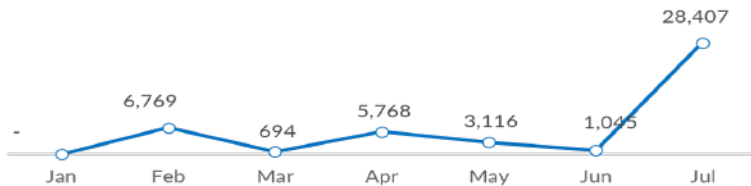


Locations

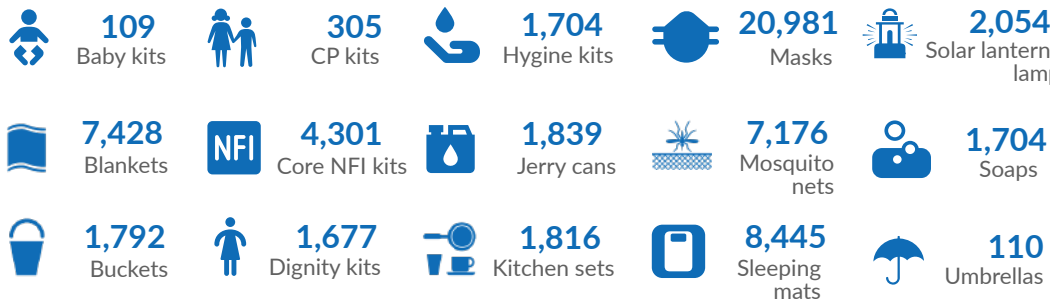


Displacement Sites in Rakhine State
(Kyauktaw, Minbya, Mrauk-U, Myebon, Pauktaw, Sittwe, Buthidaung and Rathedaung Townships)

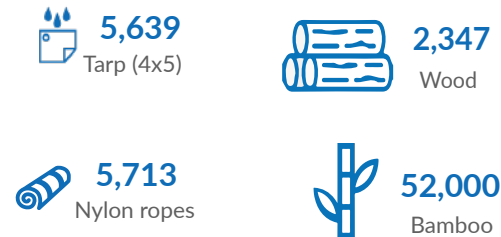
Number of persons reached per month and type of population reached



NFI Assistance  **31,490 People Assisted**



Shelter Assistance  **19,806 People Assisted**



The boundaries and names shown and the designations used on this map do not imply official endorsement or acceptance by the United Nations.

UNHCR is very grateful to donors who have provided softly earmarked and unearmarked contributions to UNHCR Myanmar and globally: Australia, Belgium, Canada, Denmark, the European Union, France, Germany, Ireland, Italy, Netherlands, Norway, Republic of Korea, Sweden, Switzerland, United States of America, as well as private donors from Australia, Italy, Japan, Republic of Korea, Spain, and Sweden.

Partners nRS (Joint Response Team): MI, UNICEF, UNFPA
cRS: IRC, IOM, LWF, PIN, RI