

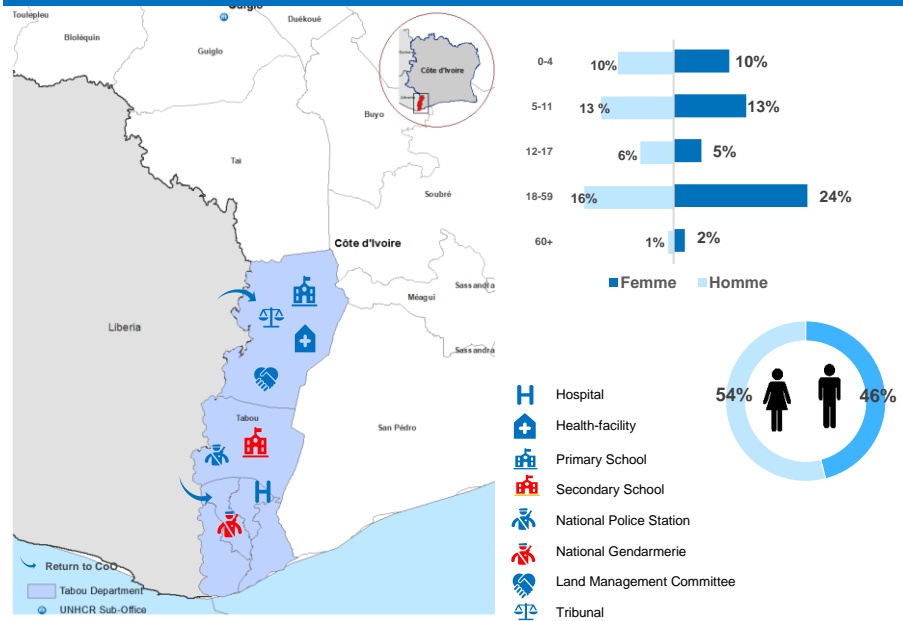


**RETURNEES IN 2021 IN THE DEPARTMENT**
  
**3,211**  
 Persons returned to the department in 2021

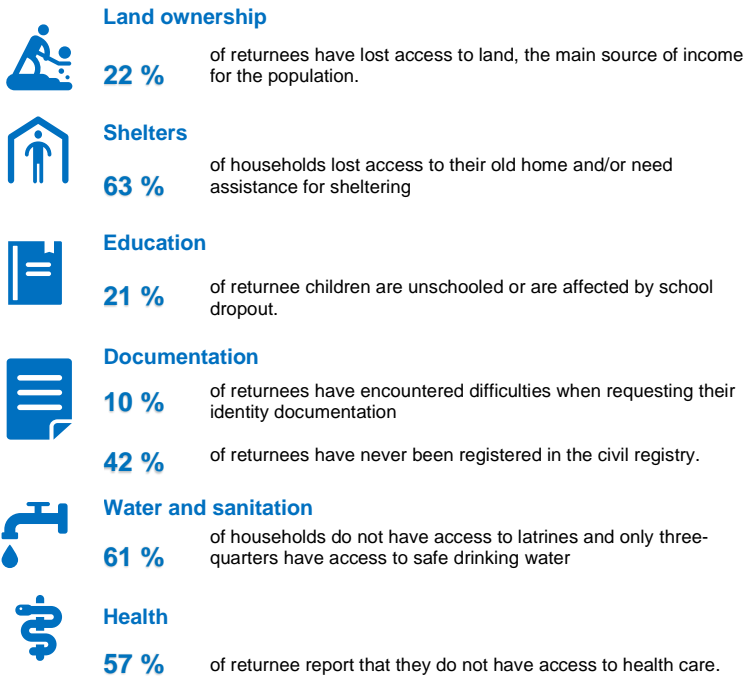
  
**809**  
 Households

  
**1780**  
 Children

**MAIN COUNTRY OF ASYLUM OF RETURNEES IN 2021**

**Libéria**
**3,087**
**MAPPING AND DEMOGRAPHIC PROFILE, BASIC SOCIAL SERVICES IN TABOU DEPARTMENT(2021)**

**GENERAL SITUATION IN THE DEPARTMENT**

The general situation in the department of Tabou is calm and peaceful in terms of security. It supported the holding of household surveys. No security incidents targeting one or more returnees since the resumption of repatriation in July 2021 have been reported in Tabou and surroundings. The returnees go about their business in peace.

**PRIORITY NEEDS OF RETURNEES**

**MAIN REINTEGRATION ACTIVITIES IN THE DEPARTMENT OF DANANE**

**MAIN PARTNERS**

**MAIN FUNDERS**

Belgium | Canada | Denmark | France | Germany | Italy | Japan | Netherlands | Private donors Australia | Private donors Republic of Korea | Private donors Sweden | Private donors Republic of Korea | Switzerland | United States of America