



Performance Snapshot

Quarter 3

Uganda Refugee Response Plan (RRP) 2020-2021

Jan - Sep 2021



70,615
Refugees & Asylum Seekers
20,212 HHs

Imvepi Refugee Settlement Arua Sub-Office



48
Partners

Sector	Actual status per key indicator	Target/Standard (2021)	Actual against annual target or standard
	88% children of school going age enrolled in primary school (ERP Sep '21)	100%	88%
	The pupil teacher ratio for primary school was 1:82 (ERP Sep '21)	1:59	Actual: 82, Target: 59
	2,000 households provided access to energy-saving equipment (Q1-3)	10,814 (target) 1/HH (standard) (incl. host comm.)	18%
	260 ha of woodlots established and maintained (Q1-3)	400 ha	65%
	70,615 refugees received monthly cash for food or in-kind assistance (77% in-kind + 12% cash) (In Q3)	70,615 Individuals	In-kind Cash
	40.1% of HH with borderline Food Consumption Score (In Q2)	18% (original 2020 target) <20% (standard)	Actual: 40.1, Target: 18
	The severe acute malnutrition recovery rate was 90.9% (In Q3)	75% (target) > 75% (standard)	Actual: 90.9, Target: 75
	The under-five mortality rate was 0.05 per 1,000 children (In Q3)	0.1 (target) < 1.5 (standard)	Actual: 0.05, Target: 0.1
	1,496 refugee households received emergency livelihood support (Q1-3)	5,818 HHs (incl. host comm.)	26%
	4,731 refugees received financial literacy training (Q1-3)	2,000 Individuals	>100%
	275 children received individual case management services (Q1-3)	1,885 Individuals	12%
	416 GBV survivors received appropriate multi-sectoral support (Q1-3)	300 Individuals	>100%
	6,072 refugees received psychosocial support (Q1-3)	13,000 Individuals	47%
	165 refugees received legal assistance and legal aid services (Q1)	24,000 Individuals	1%
	0 refugee households with specific needs assisted with semi-permanent shelter (NTR)	1,000 HHs	0%
	13,372 stabilised refugee households provided with access to minimum NFI (Q1)	20,212 HHs	66%
	Refugees received 21.2 litres per person per day (In Q3)	20 liters (target) 20 liters (standard)	Actual: 21.2, Target: 20
	79% of refugee households had access to latrine (In Q3)	85% (target) ≥ 85% (standard)	Actual: 79, Target: 85
	1,714 households received any form of cash and voucher assistance (Q1-3)	7,000 HHs	24%
	342 households received cash and voucher assistance for basic needs (Including multipurpose cash) (Q1-3)	2,000 HHs	17%



12
National partners



28
International NGOs



06
UN Agencies



02
Government partners



Partner/Sector	Education	E&E	Food Security	Health & Nutrition	Livelihood	Protection	CP	GBV	SSNFI	WASH	CBI
AARJ	OP										
AFI			IP	IP							
AIRD									IP		
ARUDIFA					OP						
AVSI				IP							
A-Z	OP										
CARE				OP				OP			
CUAMM				OP							
C-TEN						IP					
DCA		IP									
DRC					OP	IP	IP	IP	IP		
FCA											
HI				OP		OP					
IDI				OP							
IRC				IP							
JAM					OP						
JPIIIPC						OP					
Kulika	OP				OP						
LWF				IP							
MSF-F				OP							
NRC	OP										
OPM						G	G	G	G		
Oxfam										OP	OP
PALM Corps	OP										
PWJ								OP		OP	
RICE-WN	OP										
SCI	OP			OP			OP				
SeedEffect					OP						
Terego DLG	G			G							
TPO						IP		OP			
UNFPA				A				A			
UNHCR	A	A		A	A	A	A	A	A	A	A
UNICEF	A			A							
UNESCO	A										
URCS		OP					OP				
URDMC					OP						
VFI					OP						OP
VVOB	OP										
WCH	OP						OP				
WIU	IP										
WFP			A	A							
WHH					OP						
WHO				A							
WMU										IP	
WVI	OP						OP				
Xavier Project	OP										
YAU	OP										
ZOA	OP										
Total #	18	3	2	16	9	7	7	7	4	4	3

A = United Nations (UN) Agency

GP = Government Partner

IP = UN Implementing Partner

OP = Operational Partner

Association for Aid and Relief, Japan (AARJ)

Andre Foods International (AFI)

African Initiatives for Relief and Development (AIRD)

Arua District Farmers Association (ARUDIFA)

Association of Volunteers in International Service (AVSI)

A-Z Children's Charity (A-Z)

Cooperative for Assistance and Relief Everywhere (CARE)

Doctors with Africa (CUAMM)

Community Technology Empowerment Network-Uganda (CTEN-Uganda)

DanChurchAid (DCA)

Danish Refugee Council (DRC)

FinChurch Aid (FCA)

Humanity&Inclusion (HI)

Infectious Disease Institute (IDI)

International Rescue Committee (IRC)

Joint Aid Management (JAM)

John Paul II Justice and Peace Centre (JPIIIPC)

Kulika Uganda (Kulika)

Lutheran World Federation (LWF)

Medicines Sans Frontiers France (MSF-F)

Norwegian Refugee Council (NRC)

Office of the Prime Minister (OPM)

Oxfam

Promoters of Agriculture and Market Linkages (PALM Corps)

Peace Winds Japan (PWJ)

Rural Initiative for Community Empowerment in West Nile

(RICE-WN)

Save the Children International (SCI)

Seed Effect

Terego District Local Government (Terego DLG)

Transcultural Psychosocial Organization (TPO)

United Nations Population Fund (UNFPA)

United Nations High Commissioner for Refugees (UNHCR)

United Nations International Children's Emergency Fund

(UNICEF)

The United Nations Educational Scientific and Cultural

Organization (UNESCO)

Uganda Red Cross Society (URCS)

Uganda Refugee and Disaster Management Council

(URDMC)

Vision Fund International (VFI)

Flemish Association for Development Cooperation and

Technical Assistance (VVOB)

War Child Holland (WCH)

Windle International Uganda (WIU)

World Food Programme (WFP)

Wellthunger Hilfe (WHH)

World Health Organization (WHO)

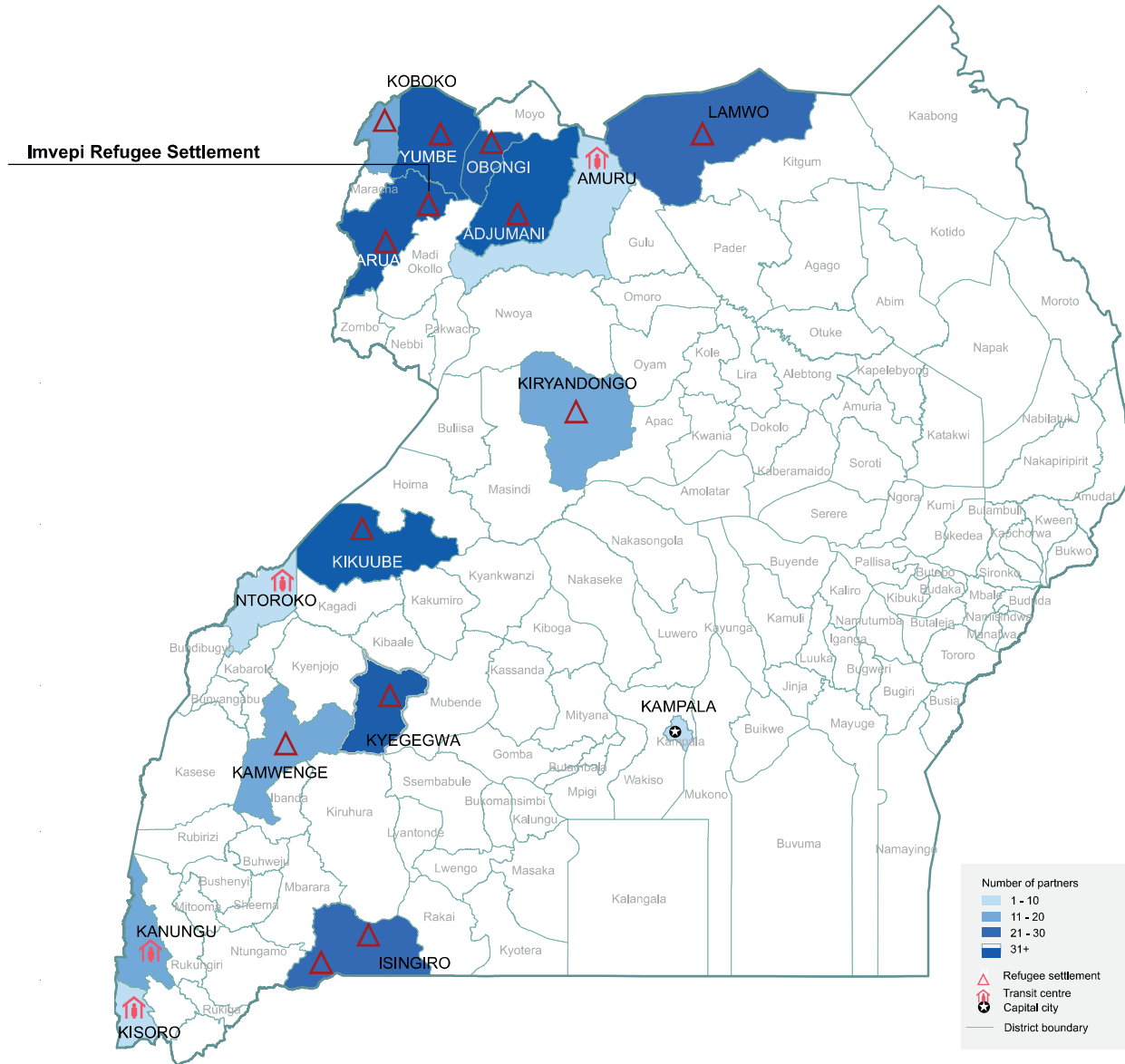
Water Mission Uganda (WMU)

World Vision International (WVI)

Xavier Project

Youth Alive Uganda (YAU)

ZOA International (ZOA)



The boundaries and names shown and the designations on this map do not imply official endorsement or acceptance by the United Nations