

Rwanda

November – December 2021

HIGHLIGHTS

A. Rwanda hosted a total of 127,112 refugees and asylum seekers at the end of December 2021. The population of concern included mainly persons from the Democratic Republic of the Congo (60.7%) and Burundi (38.9%).

B. The ETM Rwanda received the 7th evacuation convoy of 176 refugees and asylum seekers (81% males) from Libya, after months of suspended humanitarian flights, on Friday, 10 December of different nationalities - Eritrea, Sudan, Somalia, Ethiopia, and South Sudan.

C. Ms. Kelly T. Clements, UNHCR Deputy HC, conducted a 5-day mission to Rwanda, where she participated in the African Private Sector Forum of Forced Displacement. She also had meetings with Ministers of MINEMA and MINAFFET on Rwanda's role in finding solutions for African displacement issues.

KEY INDICATORS

10

Cases of COVID-19 were identified among refugees in November and December 2021. 1,678 cases identified since the beginning of the pandemic. 30,202 refugees have been vaccinated against the COVID-19, at least one shot.

437

Refugees departed for resettlement and complementary pathways in November and December 2021. A total of 2,552 departed in 2021.

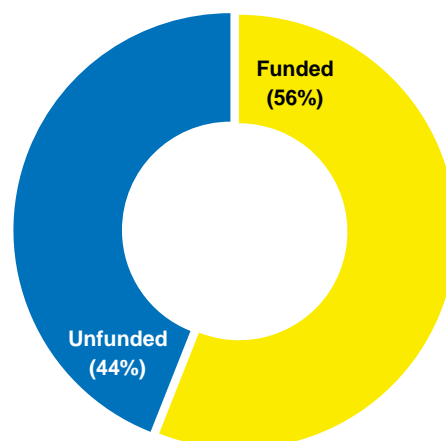
186

Burundian refugees were repatriated in November and December 2021. A total of 21,631 in 2021, and 29,525 since August 2020.

FUNDING (AS OF 29 DECEMBER 2021)

USD 87 million

were needed for regular programmes, the Burundi and DR Congo situations, the Emergency Transit Mechanism (ETM), and the COVID-19 emergency in Rwanda.

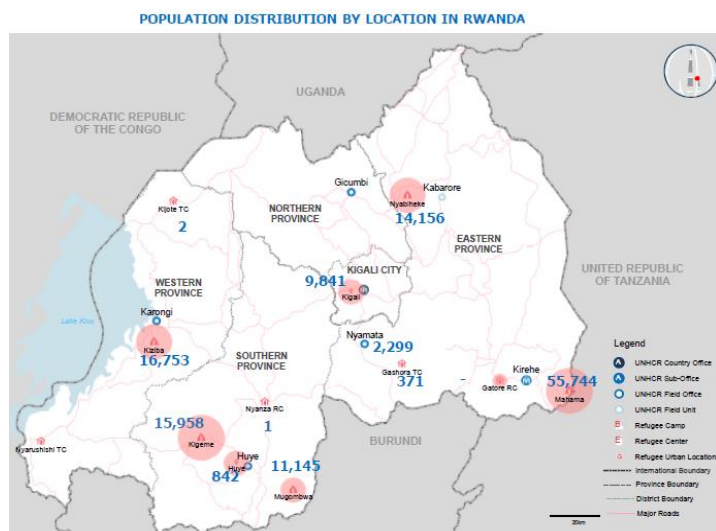
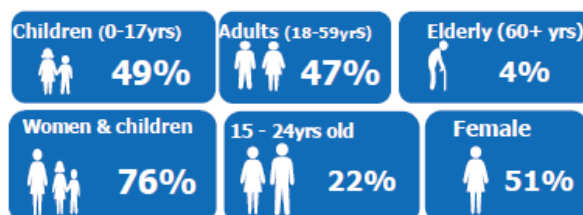


POPULATION OF CONCERN

MONTHLY POPULATION TRENDS | Jan 2021 - Dec 2021



DEMOGRAPHICS



Burundi Refugee Response



Connected Learning Project, implemented by UNHCR and partners – ADRA and WVI, helps refugee and host students to access information technology tools and improve the quality of their education. Rwanda @UNHCR/Eric Didier Karinganire

Achievements & Highlights



PROTECTION

- 26 Asylum seekers who were recently voluntarily repatriated to their Country of Origin (Burundi) returned to seek asylum in Rwanda, and they are currently hosted at Nyanza Transit Center. RSD Committee has interviewed five, and 21 were pending, scheduled for another date.
- UNHCR, partners, and refugees launched the annual 16 Days of Activism against GVB in the Mahama camp and urban settings on 25 November. The theme for 2021 was “Orange the World: End Gender-Based Violence Not.” The period was marked with different awareness-raising and advocacy sessions with the community and other shareholders, incl. public authorities, judges, prosecutors, Rwanda Bureau of Investigation (GBV), and Police.
- 1,333 refugee children in the Mahama camp received birth certificates from authorities.
- 116 refugee couples in the Mahama camp celebrated their Civil Marriage on the launch of the 16 Days of Activism against GBV and received marriage certificates from the authorities.
- 2,971 refugees in the Mahama camp received Refugee Identification Cards from the ongoing exercise conducted by the National Identification Agency (NIDA).
- Three new child protection cases with child neglect issues were identified in the camp and assisted accordingly. Three Best Interest Assessments (BIA) were completed to assess the wellbeing of the children and find solutions for their concerns.
- 73 new GBV cases were identified, 69 in the camp and four in Huye urban, including child defilement, physical assault, denial of resources, and emotional abuse cases. The survivors were assisted accordingly.
- 306 GBV and Child Protection (CP) Community-based group members in the camp were trained on the existing CP and GBV prevention and response interventions.
- 100% of refugees with specific needs (5,695), (i.e., disability, older persons at risk, and persons with medical conditions) in the camp received additional specific assistance provided by different partners, including with assistive devices for people with disabilities, rehabilitation services for children, palliative cares, psychotherapy sessions, supplementary feeding, material assistance, and specialized medical assistance.



DURABLE SOLUTIONS

- 186 Burundian refugees voluntarily repatriated to Burundi in November and December.
- 390 Burundian refugees arrived in Rwanda from Uganda, with 144 in November and 246 in December 2021. A total of 1,494 Burundian refugees have come from Uganda since August 2021, and 1,251 were facilitated to travel to Burundi.
- Five Burundian refugees departed for resettlement in December and 37 since January 2021.
- Two cases of 10 individuals were submitted to resettlement countries in November and December 2021. 21 cases of 90 individuals were submitted since January 2021.



EDUCATION

- 21,581 refugee students in the Mahama camp were enrolled in schools in the Mahama camp, 15,203 (70%) are school-aged (4,255 in ECD, 7,830 in primary, and 3,118 in secondary) and 6,378 (30%) are 18 years and above. 68% of the school-aged students are females. 161 students have disabilities.
- On 23 November, UNHCR Deputy Representative, together with officials from the Rwanda Education Board and Kirehe District, launched the Connected Learning Project in the district supporting the education of refugees and their hosts with ICT room and access to IT gadgets and tools, including laptops, and tablets.

- Ejo Youth Echo (EYE), a group of students and teachers at Paysannat L School (a school of integration of refugees in Mahama camp), launched the school newsletter on 25 November. The launch marked the completion of 10 days of training on Conflict Sensitive Journalism.
- 18,079 refugee students in the camp were provided with scholastic materials (school uniforms, notebooks, pens, pencils, and facemasks).
- 10 ECD caregivers, 75 children with hearing and speech impairment, were trained on sign language to support the children's education.
- 829 girls at the refugees' integration schools around the Mahama camp received sanitary items.



HEALTH

- The crude and under-5 mortality rates were 0.14 and 0.08 deaths/1,000/month, respectively, in the Mahama camp.
- 12,530 (average per month) refugees and the host community accessed primary health care services.
- 665 refugees and the host community members were referred for secondary and tertiary health services.
- 606 refugees with HIV/AIDS received antiretroviral treatment, nutritional and psychosocial support.
- 92,704 male condoms were distributed to prevent new HIV/AIDs, STIs, and unwanted pregnancies cases.
- 353 newborn babies were delivered in the camp and assisted by trainer medical staff.
- 3,714 women of reproductive age (average per month) attended family planning services.
- 19,515 refugees in the camp were vaccinated against COVID-19 (first dose). 15,334 received the second dose.
- 756 refugees in the camp were tested for COVID-19, and nine tested positive.
- 204 refugees in the camp, including 161 pending enrolments into Cash-Based Intervention (CBI) and 2,527 with different specific needs, received in-kind food assistance.
- School feeding program supported 20,563 refugee and host community students in ECD, primary and secondary schools around the Mahama camp.
- 2,544 children aged 6-23 months and 6,000 with nutrition needs in the Mahama camp were supported through a supplementary feeding program to reduce their exposure to malnutrition issues and improve their health conditions.



WATER AND SANITATION

- Potable water supply was above standards with 21.4 liters/person/day in the Mahama camp and 154 m³/day in the host community.
- 20,844 liters of liquid soap were distributed in all public handwashing stations to enhance good sanitation practices in the camp.
- The construction of public handwashing facilities (8x12 basins) at marketplaces and public areas was at a 90% completion rate.
- The Global Toilet Day was celebrated in Mahama camp on 19 November 2021. The theme of the year was "Valuing Toilets" to promote sanitation and community engagement.



SHELTER, INFRASTRUCTURES, AND NFI

- 434 semi-permanent shelters were repaired in the Mahama camp.
- Construction of 10 ECD classrooms, kitchen, and office was at a 99% completion rate. 24 regular classrooms were also under construction at Paysannat L with the support of the World Bank and MINEMA Jya Mbere Project.
- Construction of a football ground at Paysannat L School was at a 40% completion rate.
- Refugees in the Mahama camps received cash assistance for non-food items in the fourth quarter.



ENERGY AND ENVIRONMENT

- 15,586 refugee families in the Mahama camp were provided with domestic cooking gas.
- 27,655 trees were planted in the camp.



FOOD SECURITY AND NUTRITION

- Refugee families in the Mahama camp received food assistance through monthly support in cash by the WFP following their eligibility criteria.

COMMUNITY EMPOWERMENT AND SELF-RELIANCE

- With great thanks to the European Union funding, UNHCR Rwanda and the Indego Africa sponsored the participation of four refugees, representing four separate cooperatives, in the 24th Annual Rwandan International Trade fair, which took place in the Gikondo Expo Grounds in Kigali, 9-30 December 2021.
- 3,129 refugees in the Mahama camp received support, i.e., loans, to expand or formalize their businesses.
- 464 refugee youths in the camp were involved in vocational training, including tailoring leather craft at the camp Elite Center and others in TVET schools around the country.
- 13,986 refugees from the camp were employed or self-employed in income-generating activities.
- 2,461 refugees from the camp were trained in entrepreneurship and business skills.
- GIZ supports 163 refugees from Mahama and 137 from the host community to study in different TVET schools.

Needs & Gaps

- 38 Burundian asylum seekers in the Mahama camp were waiting for their Refugee Status Determination (RSD).
- 12 children with Severe Acute Malnutrition (SAM) and 76 children with Moderate Acute Malnutrition (MAM) were admitted to the nutrition program.
- Family planning prevalence was at 28% in the Mahama camp.



UNHCR DHC Ms. Kelly T Clement (central) met with the UN Country Team and discussed the UN's inclusion of refugees. Left – UNHCR Representative, and Right UN Resident Coordinator in Rwanda @UNHCR_Eric Didier Karingamire

Congolese Refugee Response



Street lights in Kigeme camp improved the security and wellbeing of the refugees and their host sl. Rwanda @UNHCR/Eric Didier Karingamire

Achievements & Highlights



PROTECTION

- 765 refugees in the Nyabiheke camp were provided identity cards.
- 82 refugee children in the Nyabiheke (69) and Kigeme (13) camps received birth certificates from authorities.
- 168 refugees and host communities, in Kiziba (64), Mugombwa (13), Kigeme (57), and Nyabiheke (34) camps accessed legal services, including legal representation, advocacy, counseling, and detention monitoring.
- 42 new cases of child protection, including neglect, and psychological abuse, were identified in Mugombwa (09), Kigeme (13), Nyabiheke (1), and Kiziba (19) camps. The assistance to the children includes case management, psychosocial counseling, material support, medical services, and others.
- 59 new cases of GBV, including rape, child defilement, sexual assault, psychological/emotional abuse, denial of resources, and physical assault, were reported in Kigeme (31), Mugombwa (6), Kiziba (6), and Nyabiheke (16) camps. The survivors were assisted accordingly.
- 1,805 refugees and host communities (monthly average) with specific needs, i.e., disability, older persons at risk, and persons with medical conditions in Kiziba (569), Kigeme (350), Mugombwa (300), and Nyabiheke (517) camps, and 24 in Huye urban setting, 45 people from the host communities were assisted with assistive devices for people with disabilities, rehabilitation services for children, palliative cares, psychotherapy sessions, supplementary

feeding, material assistance and specialized medical assistance.

- 52 youth in clubs (15 girls and 37 boys) in Kigeme camp participated in a 2-day workshop on fighting against gender-based violence and for Sexual Reproductive Health and Rights (SRHR).



DURABLE SOLUTIONS

- 415 refugees departed for resettlement in November and December 2021 and 2,258 since January 2021.
- 348 cases of 1,416 individuals were submitted to resettlement countries in November and December 2021 and 885 cases of 3,250 individuals since January 2021.



EDUCATION

- 16,546 refugee students (5,314 in Mugombwa, 5,587 in Kiziba, and 5,645 in Kigeme) were registered and integrated into national schools.
- 359 students (120 from Mugombwa and 239 from Kigeme) were integrated into schools of excellence, while 33 children with disability (12 from Mugombwa, 21 from Kigeme) are in specialized schools around the country.
- 1,628 refugee children were enrolled in Early Childhood Development (ECD) (910 in Mugombwa and 718 in Kigeme).
- Over 100 Primary teachers from three integration schools around the Nyabiheke camp, in Kiziba camp-based school, and Kigeme integration schools participated in training on the digital application in education through the Connected Learning project.
- 16 teachers of ECD in the Nyabiheke camp participated in a 4-day training organized by WVI on the competence-based curriculum for ECD's, teaching methodologies appropriate for pre-primary schools, using local and child-friendly teaching materials, introduction to the holistic child development, assessment in preschools, classroom management and schemes of work, and lesson planning among others.
- 86 refugee teachers in both ECD and Secondary schools in the Kiziba camp participated in a 3-day training organized by WVI to improve teaching methodology and examination bloom taxonomy based.
- 33 teachers from the Kiziba camp-based school attended Digital Literacy Training. The training is organized by the GIGA Connect project and REB in partnership with UNICEF.
- 1,120 refugee students, 741 in Nyabiheke, 379 in Kiziba were provided with school uniforms, including all absentees during the last distribution. The students have also received scholastic materials.
- 18 girls under impact hope scholarship left Kiziba camp for Kirehe Adventist school for Technical and Vocational Education and Training (TVET) program.
- The construction of 12 classrooms, ICT Room, laboratory, and latrines in the Kiziba camp was completed.



HEALTH

- Crude and under 5 mortality rates were 0.2 and 0.4 deaths/1,000/month, respectively.
- Anemia prevalence among children from 06 to 59 months and women of reproductive age was 24.28% and 09.75%, respectively.
- 13,465 Congolese refugees (monthly average) in camps and their host communities accessed health services at the camp-based health posts.
- 812 refugees and the host community were referred for secondary and tertiary health services.
- 233 newborn babies were delivered in the camps, 98% assisted by trained health professionals.
- 533 refugees with HIV/AIDS received antiretroviral treatment, nutritional and psychosocial support.
- 62,959 male condoms (monthly average) were distributed to prevent new cases of HIV/AIDS, STIs, and unwanted pregnancies.
- 14,243 adolescents and young people aged 10-24 were targeted with HIV/SRH information.
- 5,112 (39%) women of reproductive age attended family planning services.
- From 22 - 26 November 2021, Kigeme District Hospital, in collaboration with AHA, conducted outreach activities in eye care and Hepatitis, hypertension, and diabetes screening. For eye care, 563 individuals were reached, while 268 individuals were reached for Hepatitis, hypertension, and diabetes.

FOOD SECURITY AND NUTRITION

- Refugee families in camps received monthly cash assistance for food, according to the eligibility criteria.
- 92.3% of children aged 06-23 months (2,222) accessed Blanket Supplementary Feeding Program (BSFP).



WATER AND SANITATION

- Supply of potable water was maintained within the standards in Kiziba, and Mugombwa camps at 25, and 24 liters per person per day, respectively.
- The construction of 39 new handwashing facilities at the camp-based school and different communal latrines was completed.
- 1,175 liters of soaps were distributed in all public handwashing stations in Kiziba (360 liters) and Nyabiheke (815 liters) camps with clean water to improve proper hygiene habits.



SHELTER, INFRASTRUCTURES, AND NFIS

- 477 families in Kigeme (295), Nyabiheke (165), and Mugombwa (17) camps were assisted in rehabilitating their shelters with materials for doors, walls, and corrugated iron sheets for roofing.
- The construction of a Health Center in the Mugombwa camp was completed.
- 11,214 refugee families in the camps received the fourth quarter cash assistance for non-food items.
- 14,820 refugees in Kigeme camp and 648 in Huye urban were provided clothes.



ENERGY AND ENVIRONMENT

- MINEMA, Gicumbi District, and UNHCR organized a large-scale tree planning gala in the space that used to be Gihembe camp. 4,000 agroforestry trees were planted by the staff of the organizations, their partners – I&M Bank, SP Group, ICRAF, VSF-Belgium, FAO, PA, WVI, and the host community. 28,000 more trees were planted in December.
- 77 host community members participated in a training of trainers organized by UNHCR, WVI, and Gicumbi District on land conservation, forest, and wetland management.
- Additional 79,401 trees of agroforestry, fruits, and others were planted, 40,000 in Nyabiheke camp and 39,401 in the host communities.

- 11,214 refugee families in the camps received monthly cooking energy assistance, cooking gas in Mugombwa, and cash for the rest of the camps.
- 187 new Solar Home Systems were installed for refugee families in the Kigeme camp.
- 151 Solar Home Systems were installed in shelters of vulnerable families identified in the Nyabiheke camp. The beneficiaries appreciated the systems.
- 56 streetlights were installed in the Nyabiheke camp.



COMMUNITY EMPOWERMENT AND SELF-RELIANCE

- Community-Based Activities Exhibition was held at Gikondo Community Center in Kigali. To enhance community-based protection, many refugees, especially youths, were encouraged to join the Community Centers to learn new skills to develop their talents and support their communities. During the exhibition, 10 groups of youths from around the country made presentations on their activities and introduced their products. Following the visit by the UNHCR Deputy High Commissioner (DHC), the exhibition was open for refugees and the host community to visit freely.
- Eight youths who are pursuing their dreams through tertiary education programs, sports activities, various training activities aiming for digital inclusion, and engaging their peers and the community were invited for a discussion with the DHC and UNHCR staff to share their experience and the needs of refugee youths and suggest practical ways to help them thrive.

Needs & Gaps

- Water shortages remained a challenge in Nyabiheke and Kigeme camps (12.3 and 15 liters/person/day, respectively) due to the limited capacity of the water boreholes and the low capacity of the national supply grid.
- 12 children with Severe Acute Malnutrition (SAM) and 31 children with Moderate Acute Malnutrition (MAM) were admitted to the nutrition program in the camps.
- Lack of refugee IDs to support their property registrations and acquiring a driving license.

- The refugees in urban settings with chronic illnesses under monthly medicines still face delay issues in accessing public health facilities (centers/hospitals) with the Community-based health insurance (CBHI).
- Several refugee students in Kigeme and Mugombwa camps studying in boarding schools still do not have access to health care due to lack of enrolment into the CBHI.
- Family planning prevalence was at 39% in the Congolese camps.



Public infrastructures and the population around the refugee camps are at risk of environmental degradation. Mugombwa @UNHCR

Emergency Transit Mechanism (ETM)



176 refugees and asylum seekers arriving in Rwanda from Libya through the ETM. Kigali @UNHCR/Eric Didier Karengamire

Achievements & Highlights

- On 29 November, the United Nations Deputy High Commissioner for Refugees, Ms. Kelly T. Clements, accompanied by Ms. Clementine Awu Nkweta Salami, Regional Director, UNHCR Regional Bureau EHA & Great Lakes, visited the ETM. The Deputy High Commissioner was briefed on the various activities of the ETM Operation, projects being implemented, the nearly completed refugee accommodation construction.



UNHCR DHC Ms. Kelly T Clements (second from the left) visited ETM Rwanda and interacted with refugees and asylum seekers. Bugesera. @UNHCR/Eric Didier Karinganire

- On 2 November, the European Union Parliamentary Delegation headed by the EU HRVP visited the ETM Transit Centre in Gashora. They were briefed on the humanitarian assistance and different activities in the Center. They had the opportunity to visit the various interventions being done at the ETM, including livelihoods and education, as well as interaction with the refugee community.



PROTECTION

- ETM Gashora Transit Center hosted 371 refugees and asylum seekers evacuated from Libya on 10 December: 212 Eritreans, 130 Sudanese, 15 Somalis, 7 Ethiopians, 1 Chadian, 5 South Sudanese, and 1 Cameroonian. 20% were females, 17% children, and 52% unaccompanied and separated children.
- The ETM in Rwanda received the 7th evacuation convoy from Libya after several months of suspended humanitarian flights. The evacuation flight landed on Friday, 10 December, with 176 refugees and asylum seekers from Eritrea, Sudan, Somalia, Ethiopia, and South Sudan. Out of the 176 persons, 142 are males and 34 females. There were also 24 Unaccompanied and Separated Children, one elderly/frail person, two persons with disabilities, and three lactating mothers.
- The new groups participated in orientation sessions where they received information on protection services and other services available in ETM, including livelihood, language classes, legal services, and basic national laws. They were also provided detailed information on case processing.
- Registration and verification exercise of the new group was postponed to January 2022 following the Government's new COVID-19 prevention guidelines.
- 32 individuals were provided with individual legal assistance, including legal representation, mediation, and legal counseling.

- 35 refugees in the Center, including community leaders, participated in information and training sessions on basic national laws, criminal procedures, and conflict resolutions.
- 120 individuals in the Center participated in awareness sessions on crime prevention (use of narcotics).
- Eight persons with disability from the host community in the vicinity of the Center were supported with assistive devices (prosthesis and compensatory shoes).



COMMUNITY EMPOWERMENT AND SELF-RELIANCE

- 29 participants in the Voluntary Saving and Loaning (VSAL) groups participated in the financial management training.
- 47 individuals, 27 refugees, and 20 members of the host community participated in Information and Communication Technology (ICT) classes.
- 104 refugees attended literacy and language classes (English, French, and Kinyarwanda).
- 100 refugees and the host community attended vehicle driving lessons.
- 20 refugees and the host community participated in house electrical installation, design, and wiring training.
- 59 refugees and the host community participated in the tailoring and hairdressing training.
- Three out of 50 trainees from the host community in the vicinity of the ETM Center passed the test successfully, and the rest are pending the test schedule.
- 11 persons were employed, self-employed, or engaged in income-generating activities in the form of airtime selling, culinary, and other related business activities.



HEALTH AND NUTRITION

- 433 medical consultations (monthly average) were recorded at the Health Post in the Centre.
- 30 medical cases were referred for secondary and tertiary health care services.
- 1,174 male condoms (monthly average) were distributed to prevent new cases of HIV/AIDs, STIs, and unwanted pregnancies.

- 16 females of reproductive age from the Center participated in reproductive health activities, including family planning.
- 16 children in the Center aged 6-23 months are supported in the Blanket Supplementary Feeding Program (BSFP).
- 42 refugees with specific needs, including pregnant and lactating women, persons with HIV and TB patients in the Center, received supplementary nutrition support, such as CSB+ and CSB++.
- 87 refugees in the Center and 48 host community members participated in mental health therapeutic orientation sessions, including healing sessions and occupation therapy.
- 20 cases of COVID-19 were identified from 264 tests conducted in the Center (1 refugee and 19 humanitarian workers).



FOOD SECURITY AND COOKING ENERGY

- All the refugees were provided with three hot meals a day.
- 33 families and individuals with special nutrition needs were provided cooking gas.



WATER, SANITATION, AND HYGIENE

- The average adequate potable water supplied was at 88 liters/person/daily. The water supply is accessible to the host community in the vicinity of the Center.
- 580 liters of soaps were distributed in all public handwashing stations in the Center to promote proper hygiene.



SHELTER, INFRASTRUCTURE, AND NFI

- The construction of the accommodation block was at a 92% completion rate. To be completed by March 2022.
- The construction of a clinic in the Center was at a 39% completion rate. To be completed by March 2022.
- The Construction of a child-friendly space was at 85%. To be completed by January 2022.
- All PoCs in the Center received monthly cash assistance. The new group was assisted in registering with the bank for cash assistance transfer.

- Refugees in the Center received different non-food items, including soaps, sanitary pads, mats, mattresses, blankets, face masks, mosquito nets, and others.



DURABLE SOLUTIONS

- 19 refugees departed for resettlement in the reporting period, 259 since January 2021, and 462 since the establishment of the Center.
- 24 cases of 27 individuals were submitted to resettlement countries in the reporting period, and 339 cases of 393 individuals since January 2021.

Needs & Gaps

- Need for refugee ID cards for the refugees and asylum seekers in the Center to undertake driving tests and receive licenses.



Vehicle Driving Lessons is one of the life skills provided to refugees and asylum seekers in ETM Rwanda, Gashora. @UNHCR/Eric Didier Karinganire

Return and Reintegration

Achievements & Highlights

- 192 Rwandan returnees arrived in Rwanda from DRC, 21 in November and 171 in December, making 1,611 in 2021. They were accommodated in Kijote Reception Center and received reintegration packages (20%), including cash assistance and transport to their place of origin.

Development & Comprehensive Refugee Response Framework (CRRF)

- **Preparatory Roundtables** on the launch of the Global Compact of Refugees (GCR) Indicator Report, and Financing, Partnerships, Self-Reliance, and Solutions linked to the 14-15 December High Level's Officials Meeting (HLOM) were organized in November. Before the Roundtables, a Global Stocktaking Event on Statelessness was held in early November. Rwanda was represented by Ms. Veneranda Ingabire, SPIU Coordinator at the Ministry in Charge of Emergency Management (MINEMA).

At the Roundtable on Partnerships, Ms. Ingabire spoke in Panel 3 on national and regional arrangements, highlighting the impressive 90% birth registration rate in Rwanda the approach of the Government of Rwanda.

At the Roundtable on Self Reliance, Ms. Ingabire spoke in Panel 1, highlighting the joint livelihoods projects such as the Misizi marshland project, which benefits refugee and host community farmers to become self-reliant. The model is replicated in the GRF pledge on joint agricultural projects – two new marshlands are being similarly developed.

- At the Stocktaking event on Statelessness on 4 November, Rwanda was represented by DGIE, Director of Citizen Services, Mr. Jean Damascene Rusanganwa. He intervened on the progress made on the eight commitments made by Rwanda at the High-Level Segment on Statelessness in October 2019, including:
 - New nationality gazetted of July 2021 provides for acquisition of nationality on the grounds of being stateless provided that the individual does not pose a threat to national security
 - National IDs and Passports can now be issued at foreign representations (for Rwandan diaspora and former refugees who opted for local integration).
 - Statelessness identification survey to be conducted in early 2022.

- **The first High-Level Officials Meeting (HLOM) took place on 14 and 15 December 2021** at the International Conference Centre (CICG) in Geneva, Switzerland. The HLOM is one of the prior arrangements for follow-up and review under the Global Compact on Refugees. It is held two years after every Global Refugee Forum (GRF) to take stock of progress. More than 1,300 participants attended the HLOM virtually. More than 50 new pledges and initiatives were announced at the HLOM by states, international organizations, non-

governmental organizations, faith groups, the private sector, city networks, and others.

Priorities for the HLOM included:

- Expanding support for refugees and the countries who receive them
- Advancing implementation of the pledges made at the first Global Refugee Forum
- Identifying areas in need of further support and engagement

The Government of Rwanda was represented at the HLOM by Ms. Veneranda Ingabire, SPIU Coordinator of MINEMA. Ms. Ingabire intervened in the plenary session on 15 December, highlighting the progress of implementing the GRF pledges in-country.

The UNHCR High Commissioner appreciated Rwanda's intervention and added the good impression the Deputy High Commissioner carried back from her recent visit to Rwanda.

On a side event linked to the HLOM on Advancing Refugee Self-reliance through Sports on 13 December, a refugee Paralympian, Mr. Parfait Hakizimana from Mahama camp,

participated virtually as one of the panelists. He spoke on how taekwondo has helped him cope with many challenges he faced as a refugee and how the sport is a positive influence in the lives of all refugees.

Rwanda's progress on the pledges made at the Global Refugee Forum in 2019 was highlighted through a multi-media package created by UNHCR's Regional Bureau in Nairobi. [UNHCR - A new approach to refugee integration bears fruit in Rwanda](#)

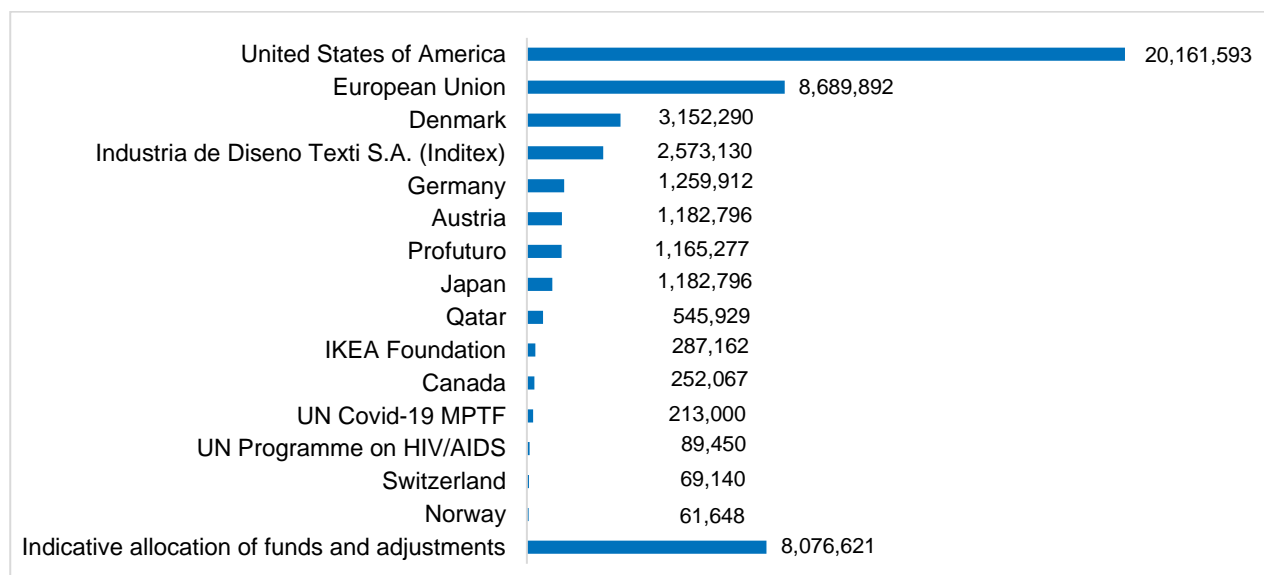


A new health center was constructed in the Mugombwa camp to provide access to primary and secondary health services to both refugees and host communities. Rwanda @UNHCR_Eric Didier Karinganire

Financial Information

UNHCR is grateful for the support provided by donors to this operation and those who have contributed to UNHCR programs with unearmarked and softly earmarked funds.

Funding received USD 48,636,042



Other softly earmarked contributions | USD

Germany 44.3 million | **United States of America** 33 million | **Private donors Australia** 11.1 million | **Private donors Germany** 9 million | **Canada** 5.6 million | **France** 4.4 million | **Finland** 3.4 million | **Sweden** 2.9 million | **Private donors Republic of Korea** 2.6 million | **Norway** 2.3 million | **Spain** 2.3 million

Japan | Luxembourg | Malta | Private donors

Unearmarked contributions | USD

Norway 80 million | **Private donors Spain** 75.9 million | **Sweden** 75.4 million | **The United Kingdom** 40.4 million | **Private donors Republic of Korea** 38.8 million | **Netherlands** 36.1 million | **Denmark** 34.6 million | **Private donors Japan** 30.9 million | **Germany** 26 million | **Japan** 23.4 million | **France** 20.2 million | **Private donors Italy** 19.6 million | **Private donors Sweden** 16.9 million | **Switzerland** 16.4 million | **Ireland** 12.5 million | **Belgium** 11.9 million | **Italy** 10.7 million | **Private donors USA** 10.6 million

Algeria | Armenia | Australia | Austria | Bulgaria | Canada | Costa Rica | Cyprus | Estonia | Finland | Holy See | Iceland | Liechtenstein | Luxembourg | Malta | Mexico | Monaco | Montenegro | Morocco | New Zealand | Peru | Philippines | Portugal | Qatar | Republic of Korea | Russian Federation | Saudi Arabia | Serbia | Singapore | South Africa | Thailand | Turkey | Uruguay | Private donors

For more information: <http://reporting.unhcr.org>

Contacts:

Elise Villechalane, External Relations Officer and UNHCR Rwanda Spokesperson, villecha@unhcr.org, Cell +250 (0) 788 315 198
Protogene Ndwaniye, Assistant Reporting Officer, ndwaniye@unhcr.org, Cell: +250 (0) 783 242 477

Data Portal: <https://data2.unhcr.org/en/country/rwa> | **UNHCR Rwanda website:** www.unhcr.org/rw | **Twitter:** @RefugeesRwanda

Instagram: refugees_rwanda