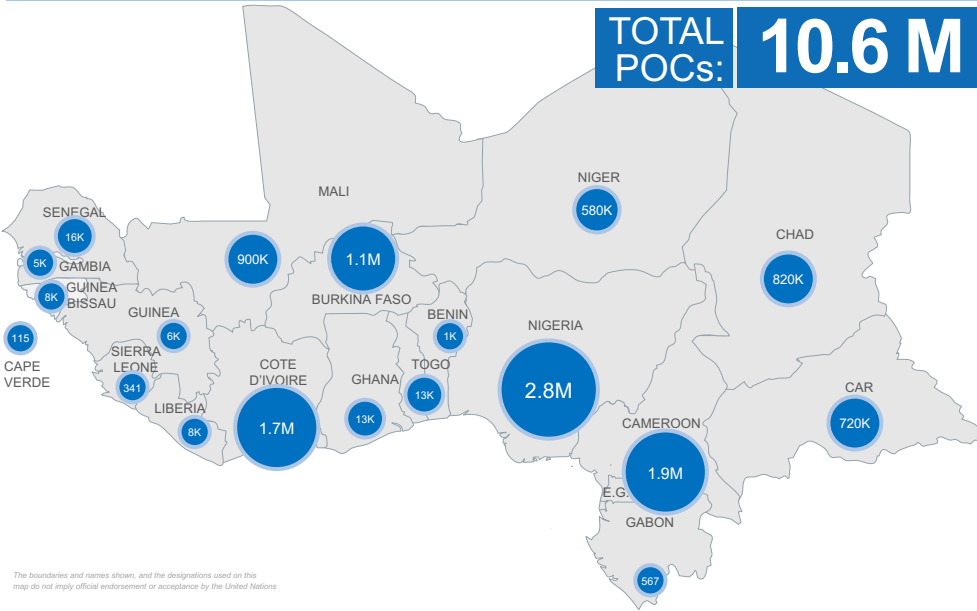


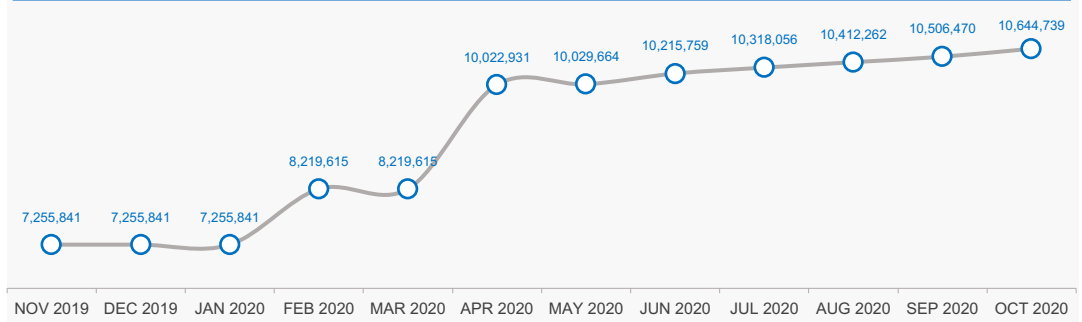
**PERSONS OF CONCERN BY COUNTRY**



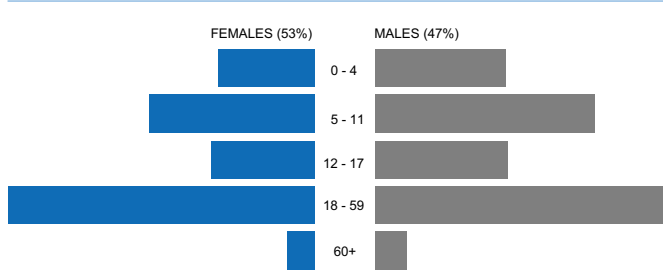
**PERSONS OF CONCERN – BREAKDOWN BY COUNTRY AND POPULATION GROUP**

	REFUGEES	ASYLUM SEEKERS	REFUGEE RETURNEES	IDP	IDP RETURNEES	STATELESS	OTHERS	TOTAL
BENIN	891	335						1,226
BURKINA FASO	20,032	33		1,034,609				1,054,674
CAMEROON	425,421	9,368		1,032,942	484,036			1,951,731
CAPE VERDE						115		115
CAR	9,769	288	17,671	641,292	55,834			724,854
CHAD	482,371	3,877		236,426			99,804	822,822
COTE D'IVOIRE	2,088	372	75,358			1,656,330		1,734,155
GABON	484	84						567
GAMBIA	4,388	212						4,599
GHANA	12,223	1,109						13,341
GUINEA	5,481	87						5,568
GUINEA BISSAU	7,801	37						7,838
LIBERIA	8,196	184						8,380
MALI	47,019	972		287,496	567,266			902,753
NIGER	229,274	3,616	84,383	266,505				583,778
NIGERIA	62,820	1,635		2,696,669			38,107	2,799,231
SENEGAL	14,347	1,884						16,231
SIERRA LEONE	341							341
TOGO	11,877	658						12,535
<b>GRAND TOTAL</b>	<b>1,344,823</b>	<b>25,073</b>	<b>177,412</b>	<b>6,195,939</b>	<b>1,107,136</b>	<b>1,656,445</b>	<b>137,911</b>	<b>10,644,739</b>

**POPULATION TRENDS (PAST 12 MOIS)**



**AGE AND GENDER (REFUGEES AND ASYLUM SEEKERS)**

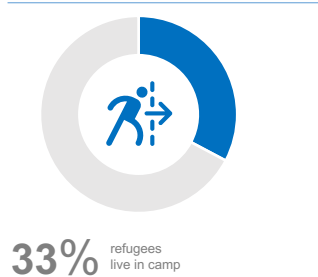


**PERSONS WITH SPECIFIC NEEDS**

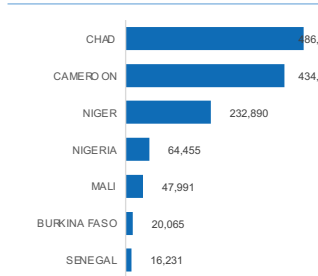
	SN	F	M	TOTAL
Child at risk		39,972	35,225	75,197
Woman at risk		53,299		53,299
Legal and physical protection needs		26,469	22,095	48,564
Single parent		31,538	2,384	33,922
Older person at risk		18,857	13,780	32,637
Disability		15,533	14,825	30,358
Serious medical condition		11,196	7,845	19,041
Unaccompanied or separated child		8,895	8,456	17,351
SGBV		8,499	181	8,680
Torture		1,168	2,166	3,334
Family unity		1,564	548	2,112
Pregnant or lactating		82		82
<b>TOTAL</b>	<b>217,072</b>	<b>107,535</b>	<b>324,607</b>	

\*One individual can have several specific needs

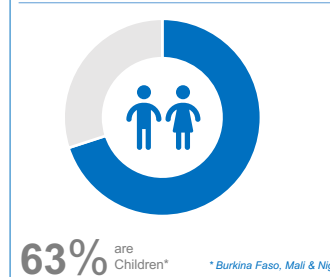
**REFUGEES IN CAMP**



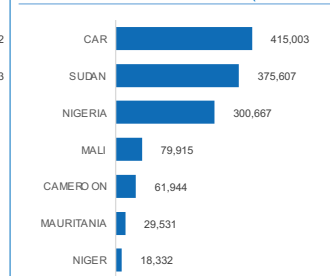
**MAIN COUNTRIES OF ASYLUM**



**IDP POPULATION**



**MAIN COUNTRIES OF ORIGIN (REF & ASY)**



**COUNTRIES OF INTERNAL DISPLACEMENT**

