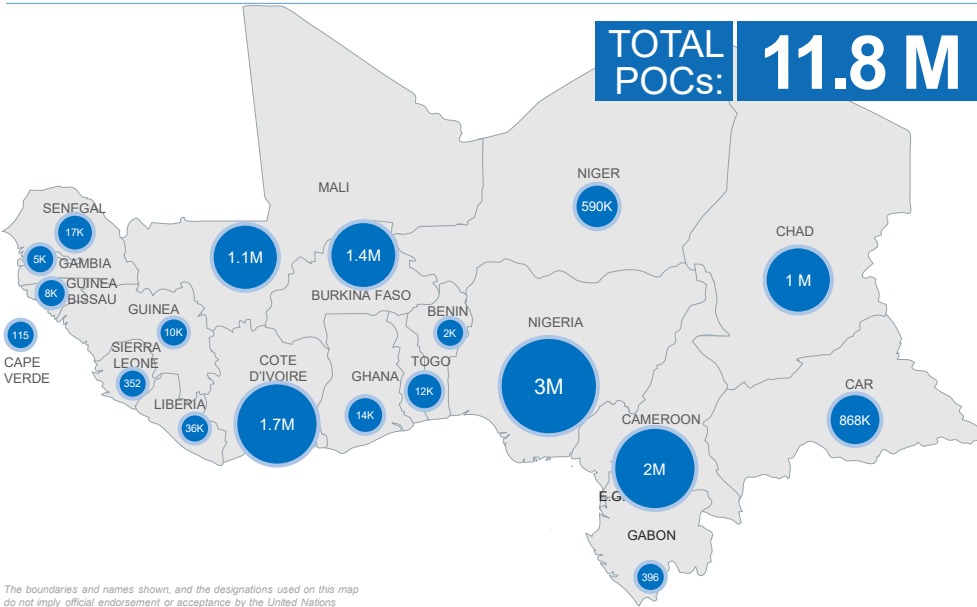
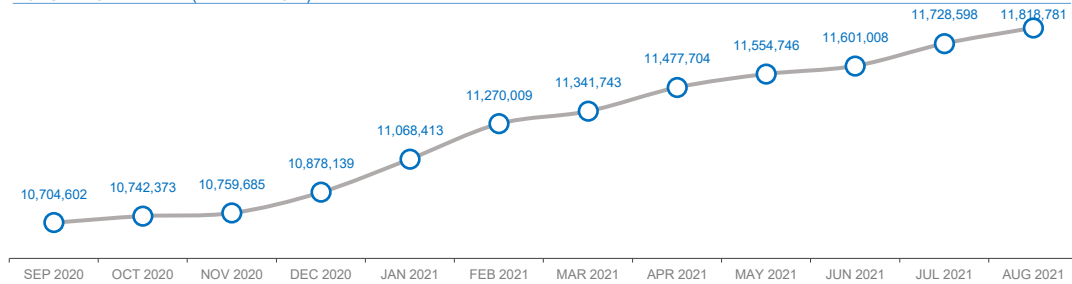


PERSONS OF CONCERN BY COUNTRY

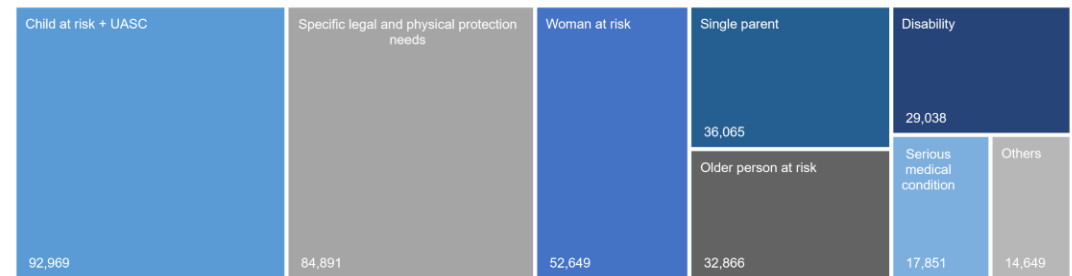


The boundaries and names shown, and the designations used on this map do not imply official endorsement or acceptance by the United Nations

POPULATION TRENDS (PAST 12 MOIS)



PERSONS WITH SPECIFIC NEEDS (REF & ASY)

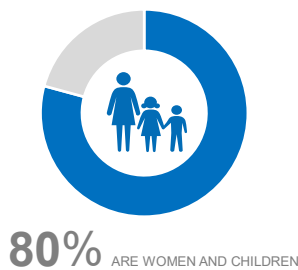


*One individual can have several specific needs

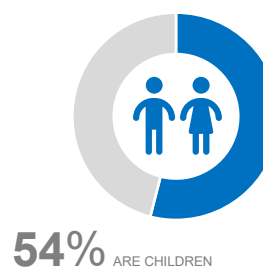
PERSONS OF CONCERN – BREAKDOWN BY COUNTRY AND POPULATION GROUP

| | REFUGEES | ASYLUM SEEKERS | REFUGEE RETURNEES | IDP | IDP RETURNEES | STATELESS | OTHERS | TOTAL |
|--------------------|------------------|----------------|-------------------|------------------|------------------|------------------|----------------|-------------------|
| BENIN | 1,441 | 717 | | | | | | 2,158 |
| BURKINA FASO | 22,777 | 28 | | 1,423,378 | | | | 1,446,183 |
| CAMEROON | 452,420 | 6,481 | | 1,052,591 | 466,578 | | | 1,978,070 |
| CAPE VERDE | | | | | | 115 | | 115 |
| CAR | 9,181 | 296 | 21,421 | 712,945 | 124,959 | | | 868,802 |
| CHAD | 520,129 | 4,613 | | 401,511 | | | 107,810 | 1,034,063 |
| COTE D'IVOIRE | 1,167 | 401 | 75,430 | | | 1,656,330 | | 1,733,328 |
| GABON | 342 | 54 | | | | | | 396 |
| GAMBIA | 4,399 | 212 | | | | | | 4,611 |
| GHANA | 12,436 | 1,934 | | | | | | 14,370 |
| GUINEA | 6,092 | 3,551 | | | | | | 9,643 |
| GUINEA BISSAU | 7,801 | 37 | | | | | | 7,838 |
| LIBERIA | 8,205 | 28,121 | | | | | | 36,326 |
| MALI | 46,896 | 965 | 85,262 | 377,781 | 588,235 | | | 1,099,139 |
| NIGER | 249,852 | 3,195 | | 291,061 | | | 46,873 | 590,981 |
| NIGERIA | 71,380 | 1,813 | 3,880 | 2,887,107 | | | | 2,964,180 |
| SENEGAL | 14,512 | 2,052 | | | | | | 16,564 |
| SIERRA LEONE | 352 | | | | | | | 352 |
| TOGO | 10,862 | 800 | | | | | | 11,662 |
| GRAND TOTAL | 1,440,244 | 55,270 | 185,993 | 7,146,374 | 1,179,772 | 1,656,445 | 154,683 | 11,818,781 |

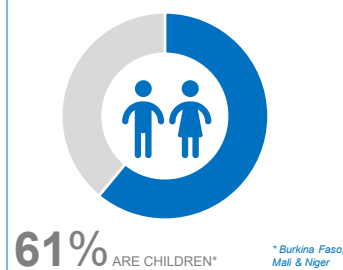
% OF WOMEN & CHILDREN - REFUGEES



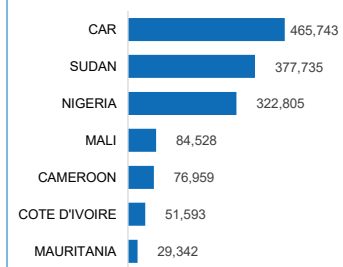
% OF CHILDREN – REFUGEES



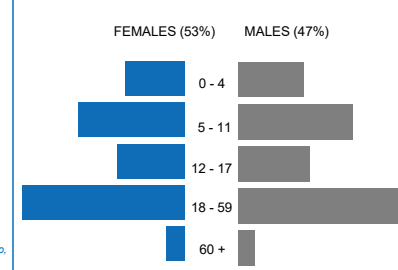
% OF CHILDREN - IDPs



MAIN COUNTRIES OF ORIGIN (REF & ASY)



AGE AND GENDER (REF & ASY)



RURAL VS URBAN

