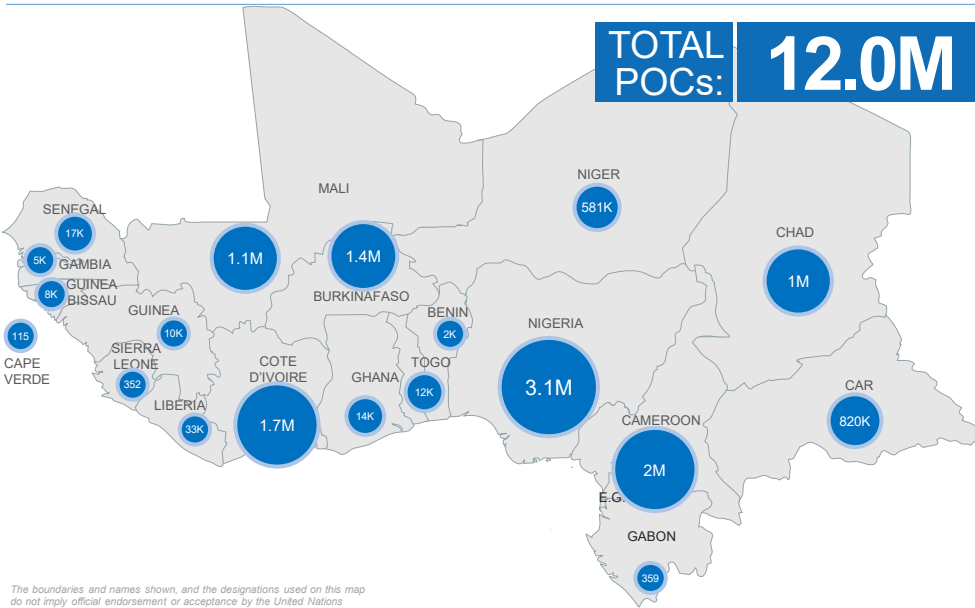
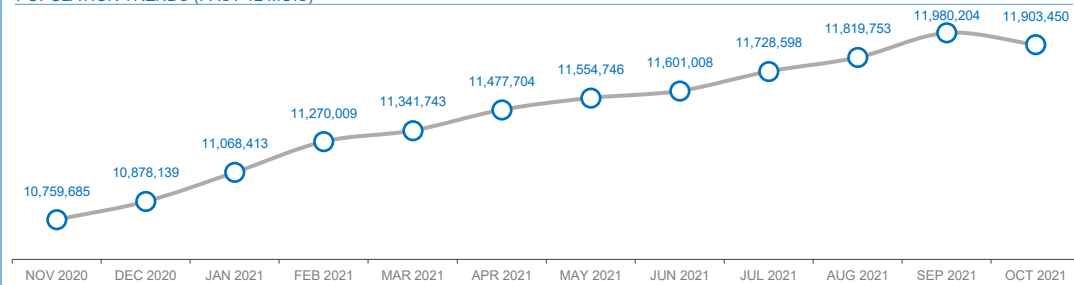


PERSONS OF CONCERN BY COUNTRY



The boundaries and names shown, and the designations used on this map do not imply official endorsement or acceptance by the United Nations

POPULATION TRENDS (PAST 12 MOIS)



PERSONS WITH SPECIFIC NEEDS (REF & ASY)

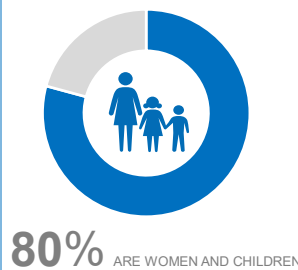


\*One individual can have several specific needs

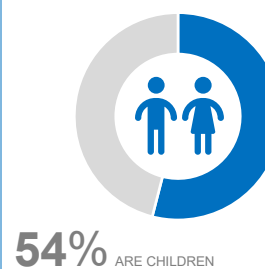
PERSONS OF CONCERN – BREAKDOWN BY COUNTRY AND POPULATION GROUP

	REFUGEES	ASYLUM SEEKERS	REFUGEE RETURNEES	IDP	IDP RETURNEES	STATELESS	OTHERS	TOTAL
BENIN	1,515	662						2,177
BURKINA FASO	24,031	41		1,407,685				1,431,757
CAPE VERDE						115		115
CAMEROON	454,854	6,788		1,052,591	466,578			1,980,811
CAR	9,260	340	21,421	722,101	124,959			820,471
CHAD	524,417	4,648		406,573			106,913	1,042,551
COTED'IVOIRE	2,130	412	80,492			1,656,330		1,739,364
GABON	305	54						359
GAMBIA	4,425	211						4,636
GHANA	12,478	2,003						14,481
GUINEA	6,092	3,551						9,643
GUINEA BISSAU	7,801	37						7,838
LIBERIA	8,448	24,517						32,965
MALI	46,895	883	83,712	401,736	606,617			1,139,843
NIGER	250,071	3,306		244,467			47,050	544,894
NIGERIA	73,346	1,555	3,880	3,024,200				3,102,981
SENEGAL	14,530	2,058						16,588
SIERRA LEONE	344	1						345
TOGO	10,818	813						11,631
<b>GRANDTOTAL</b>	<b>1,451,760</b>	<b>51,880</b>	<b>189,505</b>	<b>7,201,743</b>	<b>1,198,154</b>	<b>1,656,445</b>	<b>153,963</b>	<b>11,903,450</b>

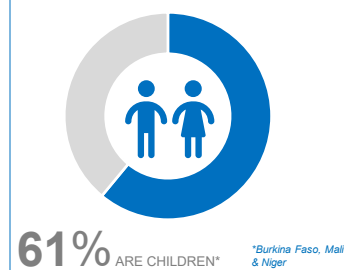
% OF WOMEN & CHILDREN - REFUGEES



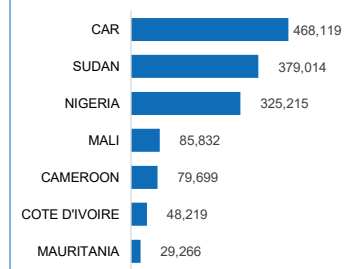
% OF CHILDREN – REFUGEES



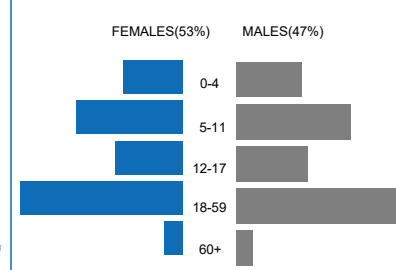
% OF CHILDREN - IDPs



MAIN COUNTRIES OF ORIGIN (REF & ASY)



AGE AND GENDER (REF & ASY)



RURAL VS URBAN

