



MINISTERUL SĂNĂȚII  
AL REPUBLICII MOLDOVA



# Update on the Health system response to the Refugee emergency in the Republic of Moldova

Inter-agency refugee HEALTH working group

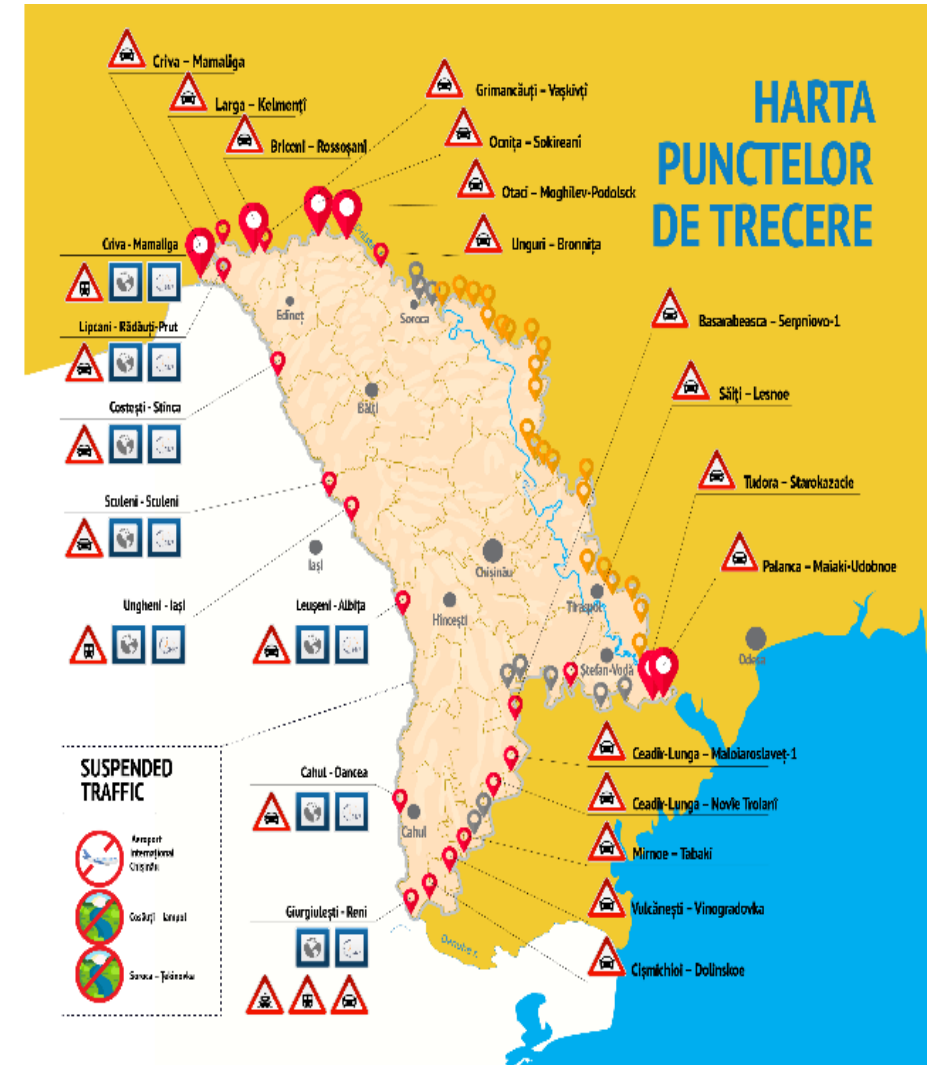
09 March 2022

# Refugee emergency in the Republic of Moldova

Situation at borders during last **24 hours**:

08.03.2022, 8AM – 09.03.2022, 8AM:

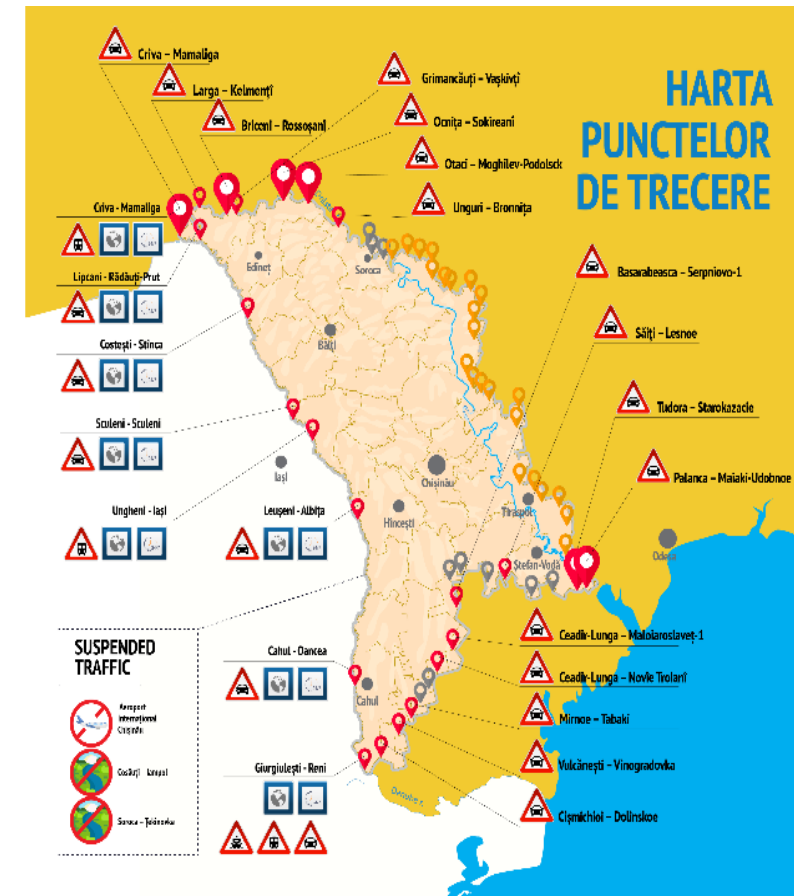
- **Entries** of Ukrainians and other third-country nationals (TCNs): **28 184**
  - 16 824 Ukrainian refugees
  - 11 360 other nationalities
- **Exits** of Ukrainians and other TCNs: **27 534**
  - 18 018 were Ukrainian refugees
  - 9 516 were other nationalities
- **10 007 children** among Ukrainians entered/exit



# Refugee emergency in the Republic of Moldova

Since 24 February 2022 :

- **Entries** of Ukrainians and other third-country nationals (TCNs): **342 288**
  - 267 060 were Ukrainian refugees
  - 75 228 were other nationalities
- **Exits** of Ukrainians and other TCNs: **232 299**
  - 203 363 were Ukrainian refugees
  - 28 936 were other nationalities
- **63 697** Ukrainian refugees accommodated
- **2279** asylum applications from Ukrainian refugees
- **73** refugee/migrants accommodation places/centers



# Refugee emergency in the Republic of Moldova

## **During last 24 hours**

- Health care was offered to more than - 454 patients, 154 children
- Admitted to the hospitals – 130 patients, 75 children

Service is offered for free – NCD (oncology, CVD, diabetes...)

## **Distribution by nosologies**

- ARI,
- COVID-19,
- chronic illnesses,
- obstetric care,
- trauma..

# Coordination and communication

- **Contingency plan** of the health sector was finalized and will guide the interventions - based on the rapid Chemical Biological Radio-Nuclear (CBRN) risk assessment
- **Unique management center**, created by the Government for coordination and **MoH health area coordination platform**
- **Coordination of health service delivery** (MOH orders/disposition)
- Green line for the Republic of Moldova citizens – **080080011**
- UN coordination mechanisms – UNHCR (overall) & WHO health sector

# Health system pillars and interventions

## Health care service delivery – **was defined**

- ✓ Type of services, designation of the institutions
- ✓ List of the essential services
- ✓ List of essential medicines

## Public health Epidemic Preparedness and Response – **is ongoing**

- Routine visits and testing in the RefCamp
- Regulation on refugee camp – routine inspection
- Immunization action plan
- Outbreak prevention and response

## Need assessment PSM – **is on-going**

- Health needs recipient and delivery
- Need assessment tool
- PSM chain and logistics
- Coordination of the procurement and delivery

# Health System Response and Assurance of the Continuity of the Health Services - refugees & general population

- a) Estimating health needs – ongoing
- b) Immunization service delivery – COVID-19 and respiratory diseases measles and rubella
- c) Re-design the patients' pathways and case management (MoH mission in the health care institution 04.&07 March 2022)
- d) Extension of services -
- e) Case management including referrals protocols
- f) Capacity building plan based on the needs assessment
- g) Supplies: stockpiles, local sourcing etc...

# Public health

## **Surveillance, early warning and response**

- a) Refugee/migrants premises are supervised
- b) e-form for refugees was developed (screening of migrants & health care services provided) – final stage

## **Social mobilization, health information and education**

- a) Health education activities related to potential outbreaks – ongoing

## **Protection of personnel (IPC) & COVID-19**

- a) Infection prevention and control - need additional effort for endorsement in the refugee camps
- b) disease specific protection

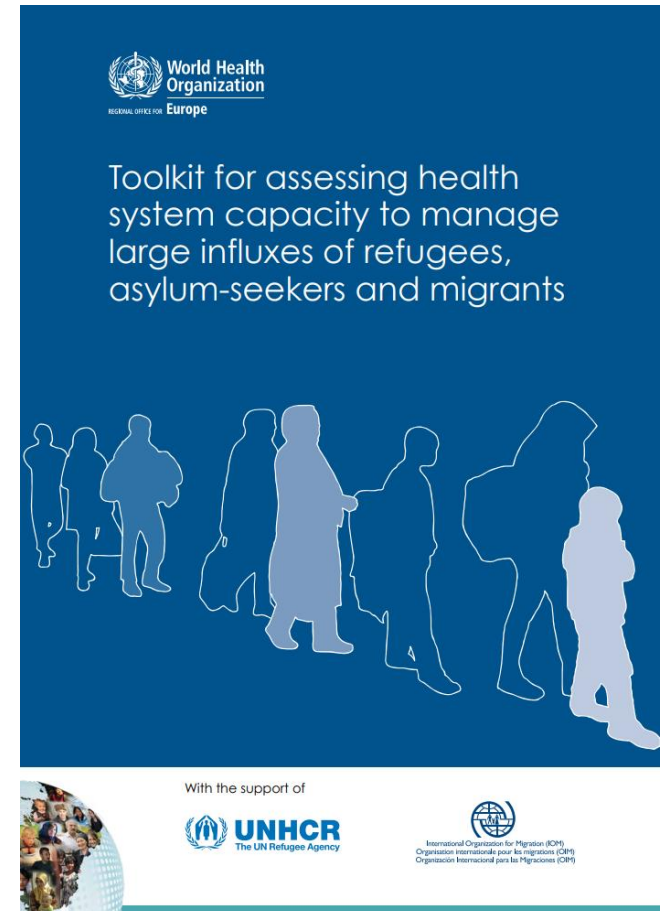
## **Outbreak detection and management**

- a) list of potential epidemics by camp, depending on local situation and past history
- b) guidelines on the way a specific disease outbreak will be responded to



# PSM, logistics and supply

- The national warehouse capacities was improved
- Two main directions of the supply :
  - Health Supplies for health care of refugees and routine health care of the population
  - Health supplies for health care facilities (hospitals) which will be mobilized for people and refugees in Moldova
  - Health supplies which is in transit



# Next steps

Donor&partner 5Ws mapping & need assessment

Emergency Medical Team coordination cell and supplement the national capacities in the refugee camps and PoE

Coordinate the supplies management and distribution

Continuous risk assessment and adjustment of the scenarios

# Thank you



MINISTERUL SĂNĂȚĂȚII  
AL REPUBLICII MOLDOVA

