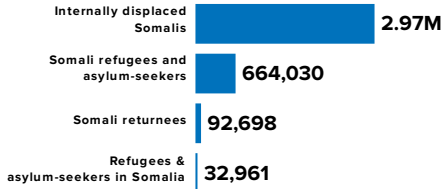


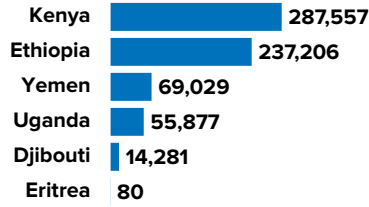
3.76 MILLION
PERSONS OF CONCERN
[SOMALIA SITUATION]



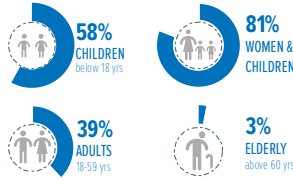
As of March 2022, Somalia was host to 32,961 registered refugees and asylum seekers, mainly from Ethiopia and Yemen.

Over 92,000 Somali refugees have voluntarily returned to Somalia since December 2014 with UNHCR assistance from different countries of asylum including Kenya, Yemen, Djibouti, Libya, Tunisia and Eritrea.

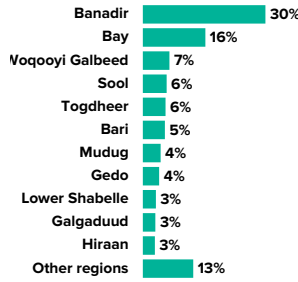
670,956
SOMALI REFUGEES AND ASYLUM-SEEKERS
hosted in neighbouring countries



AGE AND GENDER
of refugees and asylum-seekers

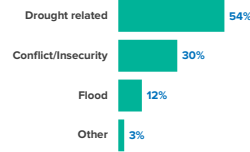


2.97 MILLION
INTERNALLY DISPLACED IN SOMALIA

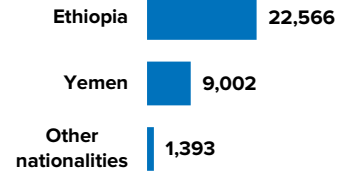


Estimated IDP statistics, Somalia Information Management Working Group, Jan 2021

REASONS FOR DISPLACEMENT

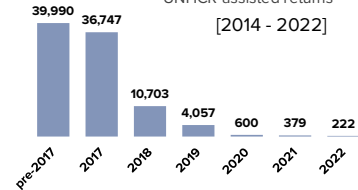


32,961
REFUGEES AND ASYLUM-SEEKERS
hosted in Somalia, by country of origin

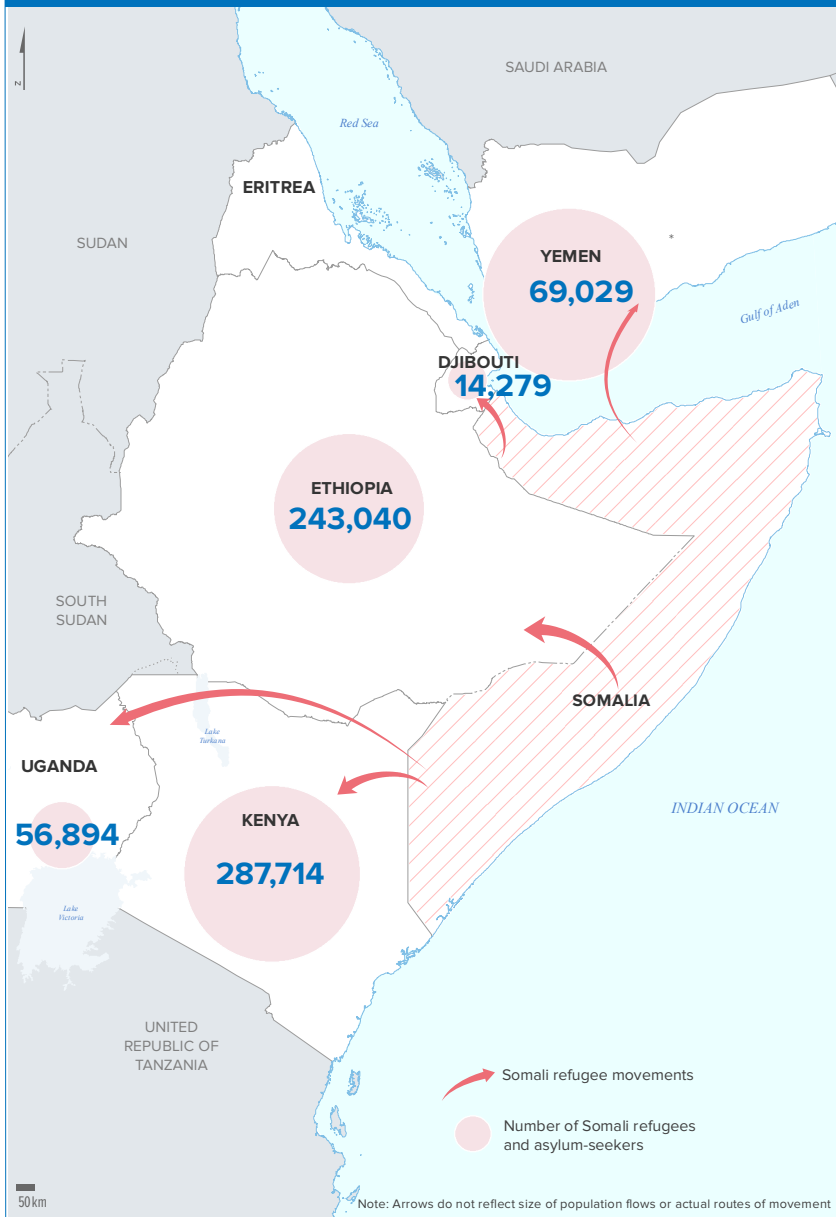


92,698

SOMALI REFUGEE RETURNEES
UNHCR-assisted returns
[2014 - 2022]



SOMALIS displaced into neighbouring countries



Population of concern to UNHCR in SOMALIA

2.97 MILLION
INTERNALLY DISPLACED PERSONS

92,698
SOMALI REFUGEE RETURNEES
[2014 - 2022]

32,961
REFUGEES AND ASYLUM-SEEKERS



Region	IDPs	Refugee Returnees	Refugees and Asylum Seekers
Awdal	32,400	-	466
Bakool	41,300	-	-
Banadir	904,000	20,763	2,679
Bari	162,300	-	8,764
Bay	461,600	9,760	-
Galgaduud	92,400	18	-
Gedo	119,900	2,968	-
Hiraan	88,700	70	-
Lower Juba	76,700	54,652	-
Lower Shabelle	96,400	185	70
Middle Juba	40,000	1,540	-
Middle Shabelle	86,600	864	-
Mudug	131,200	-	1,354
Nugaal	49,000	61	2,960
Sanaag	46,000	-	153
Sool	175,400	-	-
Togdheer	167,400	-	344
Woqooyi Galbeed	196,200	887	15,391
Other	-	930	780
Total	2,967,500	92,698	32,961

The boundaries and names shown and the designations used on this map do not imply official endorsement or acceptance by the United Nations. Final boundaries between the Republic of Sudan and the Republic of South Sudan and Somalia and Ethiopia has not yet been determined.