

CCCM YEMEN – FIELD MISSION REPORT

IBB 04 TO 08 SEPTEMBER 2022

Objective of the mission:

This mission to Ibb is to assess the situation in this Hub, especially at the end of the rainy season. Main purpose is to visit sites managed by partners, monitor response, gaps, needs, and potential improvements or challenges encounter by site management agencies. Visits was coordinated with participation of shelter and protection colleagues.

Summary:

1. Specificities of Ibb hub
2. General overview of the IDP sites situation
3. IDP sites affected by floods
4. Issues on lack of coordination with sectors
5. Needs for CCCM partner in Al Dhale'e to cover IDP sites
6. Needs for livelihood activities
7. Follow up and action from CCCM


Sites visited:

Day	Site 1	Site 2	Site 3	Site 4	Site 5
Sunday 4	Dar Al Sharaf site	Maslah Al Torqat site			
Monday 5	Qheza site	Waqeer site	Al Salam site		
Tuesday 6	Al Amal site	Jibgob site			
Wednesday 7	Gadyaa site	Natco site	Al Qubah site	Al-Batra site	Akmat AL kabsh site

1 - Specificities of Ibb hub:

Despite of conflict in Yemen IBB Hub considers one of the most Hubs that host displacement waves and the situation is very miserable, especially at IDP Hosting Sites which are (181 sites) categorized 44 managed sites with total (24982 IDPs population) and 137 sites unmanaged sites with the total number of (31539 IDPs population). In Ibb governorate, there are 45 IDP hosting Sites with (14650 Ind), while in Taiz governorate

there are 73 IDP hosting Sites with (30215 Ind). Whereas Al-Dhalea governorate there are 63 IDP hosting sites with (11656 Ind). Although the availability of few organizations on the ground; there is a critical need to cover gaps at the IDP hosting sites, which lacking to the basic humanitarian needs multi sectors, such as lack of food, insufficient shelter, limited use of sanitation & hygiene services, limited child-friendly spaces for children and lack of education, learning spaces as major challenges facing the IDPs at sites.

 Challenges that are facing CCCM Team:

- Despite the availability of few organizations on the ground; there is a critical need for more coordination by all clusters to overcome the existing gaps in the IDP hosting sites, which lacking to basic humanitarian needs. Throughout the initial assessment conducted in some of the sites by CCCM Partners, it is observed that there are many gaps across all the sectors, such as lack of food, insufficient shelter, limited use of sanitation & hygiene services, limited child-friendly spaces for children and lack of education, learning spaces as major challenges facing the IDPs at sites.
- Some IDPs Hosting Sites located near the torrential rain which affected sites by flood and threats their lives.
- CCCM Partners face a shortage of funding for site maintenance which leads to the inability to mitigate critical needs.
- Poor of CCCM presence in Al Dhalea Governorate.
- Lack of service providers in Ibb Hub.
- Frequent eviction threats for the IDP sites that pressure on the land.
- lack of shelter & NFIs stock that meet the critical and regular needs.

2 - General overview of the IDP sites situation:

All sites are in need for site maintenance and shelter maintenance. Only in 2 camps, the situation for the shelters was slightly better, but most of the sites were organized spontaneously with emergency shelters. All inhabitants of the IDP sites referred for the need of WASH improvement. Since May 2022, the water trucking stopped and to get water the IDPs have to find the water from alternative location, or using water from the rain, or buying the water. One site was connected to the city water grid, but even there only the lower part of the site has water, the higher part is not getting the water due to low water pressure in the pipes.

Most of the inhabitants of the IDP sites have not received food or cash for food for a long time, more than 2 months. They are also complaining about the criteria for selection and needs explanation. Protection colleagues should provide a better support for this situation. We noticed that more communication could be facilitated using the site committees.

All site committees referred for the need of livelihood projects. This is for them the solution to have more long term and durable solutions. However, their proposals are always the same, but some of them are not expensive and based on QIPs it would be possible to implement and monitor them.

In most of the sites visited, the CCCM team did not see any fire prevention equipment. Most of the site have a distance between shelter not in accordance with the CCCM standards. Most of the sites don't have

cooking places located in adequate distance with shelters. Therefore, fire risks are high, and in case of fire the IDPs have no equipment to stop the fire.

CCCM Site Management Partners capacity:

Governorate	Site Management	Dedicated Staff	Shared Staff	Sites	IDP population
Ibb	IOM	6		19	6884
Ibb	TYF	3	5	13	5428
Ibb	YFCA	stopped	stopped	1	1655
Taiz	DEEM	3	6	12	12670
Taiz	YFCA	stopped	Stopped	11	6998

The CCCM team noticed that the number of dedicated staff is under the recommended number of staff. The CCCM SMT is acting as Mobile Team, and their presence is weekly to the site, or on demand.

3 - IDP Sites affected by floods:

During the first day of the mission the CCCM team visited with the Shelter Sub-National coordinator 2 sites affected by flooding the day before our arrivals. Both sites are under the management of IOM, and located

In the first site: ***“Dar Al Sharaf A , Al Mashana District of IBB Governorate***

Site Population: 90 HHs, 472 Ind.

Site Management Agency: IOM

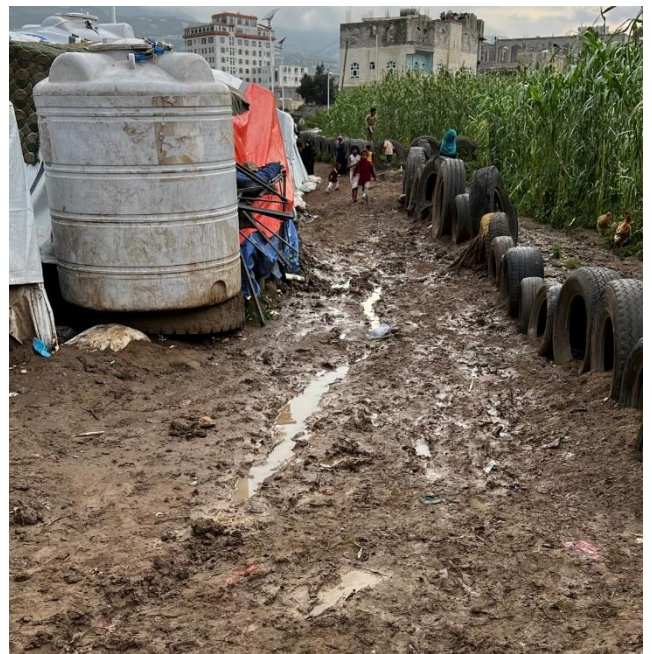


As we can see from the google earth image, this site is spontaneous and located on a turn of the river. From the Ouest side it's a host community suburb, the access is through a short track, making the access limited to large vehicle. From the North part, it's cultural field and IDPs are using an unuse location, following the river inner bank. the river dug for 3 to 4 meters down. Therefore, if the flash flood is more than 3m the site is at high risk of flood from the river source.

IOM implemented a mitigation measure to reduce exposure to flash flood coming from the river. The site is located in the close out bank, there IOM built a 1.5/2 meters high wall for a cost of 20'000 USD. This wall starts from the first shelter and finish with the last one. During the last flood, this wall protected the idp sites and the shelters (see picture red square), but was not high enough. The recommendation from IOM site manager is to increase the level of the whole. However, from the setting of the site and from the low number of IDP households, potential alternative solution could be found.



The CCCM unit noticed that no functional drainage system or maintenance was present in the site, and the site was still suffering from stagnating water and mud (see pictures) from the last rain. On top of it some protections, like sandbags would need to be replaced.





Some of the shelters are better protected with sandbags to avoid water to enter inside them (see picture), but the distance between shelter is reducing the capacity to implement flood measure for the drainage and could result to water infiltration and health issues.



Example in this site for need of site maintenance, and shelter rehabilitation. We can see that the drainage is improvised, the sandbags would have to be replaced, and the water flow will finish to another shelter. However, this part is not most of the situation of the site, and a lot of the shelter have been improved with additional tarpaulin.

CCCM recommendations:

1. Provide small bins and tools to support community for cleaning campaign and waste management.
2. Site maintenance and shelter maintenance should be provided, to improve drainage. Some shelters should need additional tarpaulin to cover roofs and reduce water infiltration.
3. This site could be selected for relocation. Number of IDP households is not important. Potentially some other sites could host them. However, this solution should be selected only if the community is positive with the approach and if we could not find alternative solutions.
4. Provide tools for fire mitigation and establish fire committee (including training)
5. The site management agency should add some signs to increase communication and information sharing with the IDP community

In the second site: ***“Maslahat Alrokat site, Al Mashana District of IBB Governorate”***

Site Population: 105 HHs, 638 Ind.

Site Management Agency: IOM



This site is blocked between the inner riverbank and a wall of the private land. It's organized on a line of 400 meters long. From the flood photo below we can see clearly the situation and the direct threads of flood to IDPs living in this site.



Here, the inner river is from 2meter down and lower. Therefore, the last flood affected directly the site. The CCCM noticed that a latrine and a water tank were taken away by the flood. In addition, a wall of one shelter was destroyed by the flood (see picture).



The mitigation measure proposed by the site management agency is to build a wall. However, from the CCCM team the cost compared to the risk is too low and too expensive. Benefit vs cost is not appropriated.

Some pipes have been set up in the site to extract the water perpendicular to the water flow and river. But the CCCM team noticed that this implementation revealed some technical issues. We noticed that not all pipes are working correctly due to lack of technical set-up (see picture). Therefore Water is not completely evacuated.



The CCCM team also noticed that like other sites drinking water stopped. In this site, a private supplier is providing the water. The IDPs have to pay for it, for a cost of 50USD for 3000 liters. One water tank was locked and the explanations from the site management agency or the IDP community were unclear (see

picture, yellow square for the lock). This should be followed by Protection team for clarification. Apparently one IDP household is having the keys of this lock, the concern could result to tension amount the IDP families.



CCCM recommendations:

1. This site should be prioritized for relocation as the mitigation measure would be not efficient enough.
2. Coordination between CCCM and Protection should be organized as soon as possible to understand the water situation and to avoid protection issues.
3. Site maintenance should be organized to improve water drainage, shelter maintenance. Tools should be provided for the IDP committee to self-manage the maintenance.
4. Some information to the IDPs should be implemented to the site for risk reductions.
5. Distribution of plastic box could avoid IDPs to lose important belonging such as documents due to flood.

The case of Sites affected by flood not in riverbank area:
Al Quba site, At Taiziyah district of Taizz Governorate.
Site management agency: **DEEM**
Population: 364 HHs, 2078 Ind.



The sites affected by floods are not only the one in the inner or outer riverbank. Based on the topography, and availability of land, the land used by IDPs or the land available may be prompter to potential floods.

From the google earth image The site density is visible with shelters touching or attached to each other. Some families are even sharing the same self-settled made shelter. Shelter situations need improvement and plastic sheet are damaged. For several years this site has not received new plastic sheet to replace the first one provided. IDPs are using plastic found in random place to replace the broken parts (see picture).



Heavy rain started when the CCCM team was arriving in the site. The assessment of it has been postponed for 2 hours.

This allow us seeing that with water issues, the IDPs are collecting the water from the extraction pipes of the close building. According to the site management team, this water is not used for drinking, but for cleaning and cooking however this information should be confirmed as using this type of water could result with health and hygiene threats.

After the rain, the assessment took place. The CCCM team could see that in this site managed by DEEM, the flat place is not allowing natural drainage. No drainage systems are in place, and no sandbags were provided to avoid water infiltration in the shelters.

IDPs are reporting water infiltration from roof but also from the ground. See pictures:



However in the sites managed by DEEM the CCCM team noticed the presence of sign to inform the IDPs on the number to call to refer issues.

CCCM recommendations:

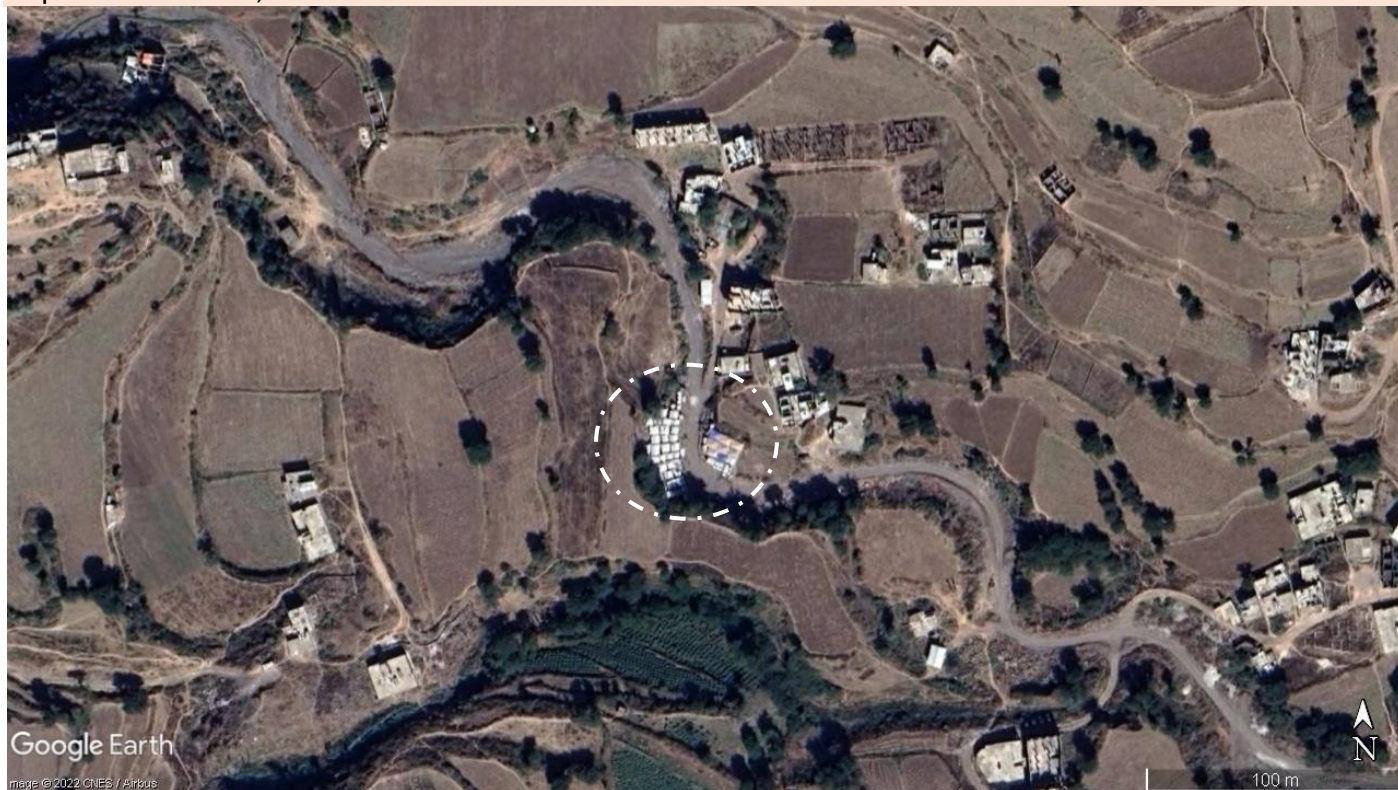
1. Livelihood is the main recommendation for this site. The IDP communities is collecting plastic bottle but if they can transform it by grounding it, they profit would be 5 times more. Women also needs activities to generate incomes.
 2. Due to shelter situation CCCM and Shelter should coordinate to provide additional Emergency Shelter Kits, and plastic sheets. Also, coordination should be organized with Shelter for shelter improvement to mitigate floods.
 3. Site maintenance should be provided to add sandbags, tools for site maintenance, training on using the tools should be organized, in order to set up a proper drainage system.
-

Implementation of flood mitigation measures in IDP sites, the example of Qehza:

Qehza Al Sayla'a, Al Dehar District of IBB Governorate.

Site Management Agency: TYF

Population: 50 HHs, 311



From the Google Earth image, we can notice that this site is separated in by the inner riverbank. This riverbank is also the access road to this site.



Based on the information provided from colleagues and from TYF site management team, the flood mitigation measures removed the shelters from the inner riverbank, and installed gabions to prevent flood and erosion. See photo.



From shelter aspect, the structure of the sites is divided in two, one part is constituted of shelters provided by a charity organization. The structure of these shelter is more based on transitional shelters with concrete base and short concrete blocks wall. The structure is increased the mitigation to avoid flood, however IDPs referred some roof issues and needs for maintenance.

The second part is constituted with ESK (see previous photo). Size of the shelter is less than for the second one, and the location of this part of the site is raising some potential structural and maintenance issues.

The management from TYF is showing a lot of positive aspects, from the complain box, to information messages. As well the site committee is well established with gender balance and badges. This site also has a dedicated cooking area with a good distance to the shelter to avoid fire incidents. According to TYF, they are also equipped with tools to reduce fire incidents. Request from the community would be to have the cooking area protected from weather.



The CCCM team noticed that the latrines are located in an area too close to the inner riverbank, on upstream of the camp, and with potential flood exposure. The request from TYF would be to increase the level of the gabions. The downstream of the site is used by IDPs as dump side for the trashes (see below picture). Therefore with flood, the trashes will be transported to the center of Ibb city, and potentially generate hygiene issues.



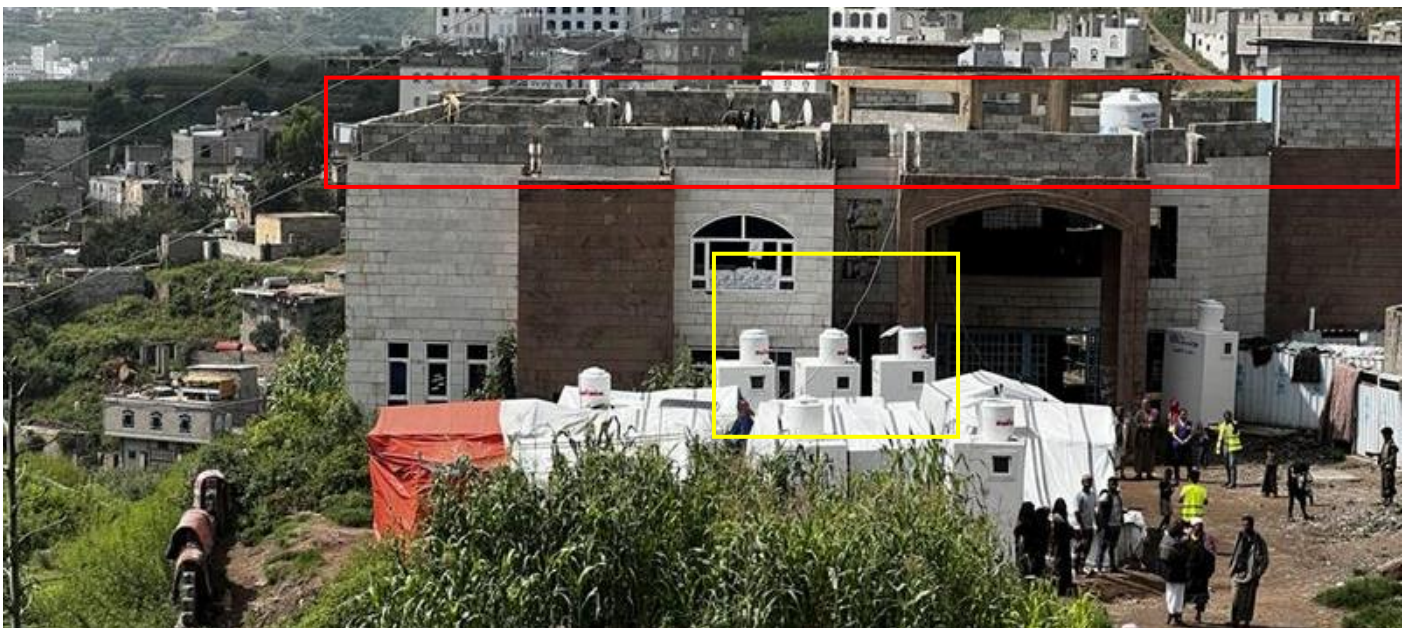
CCCM recommendations:

1. Increase the level of the gabions
2. Needs for some site and shelter maintenance
3. Improve the cooking area
4. Coordinate with WASH for the issues, including waste management
5. Establish evacuation road in case of flood

4 - Issues on lack of coordination with sectors:

During the assessment of the sites, the CCCM teams noticed some problems in the respect of the roles and responsibilities of the Site Management and Site Administrators with the sectoral partners.

This problem can create some threats of evictions and affects the IDPs situations. This was the case of the site Waqeer, managed by IOM, where UNICEF implemented additional latrines without coordinating with the Site Manager. Where they installed the latrines in the stream channels and the torrential entered the IDPs's shelters. This site is mainly a collective center where IOM improve safety and ensured regular activities. This problem with WASH activities was not the only one occurred during the assessment of the sites. This lack of coordination and information provided by the sectoral partners is at the end a waste of resources, as some of the sites are getting too many latrines, when other sites are missing them, based on the SPHERE indicators.



This photo is highlighting the area where non-coordinated latrines were set-up (in yellow). In red is the safety measures on the roof implemented by IOM under site improvement activities.

Another problem of coordination at site level is not only with providing hard services, but also soft services or information sharing. The CCCM teams noticed that some of the protection activities were creating some tension with the IDP community. This problem was highlighted particularly in a site Al Tumoh managed by IOM. There, our UNHCR protection colleagues, discussed this problem with the IDP communities' leaders.



One last problem encountered during assessment and visit is the difference between the sites in term of communication with host community. Some of the sites, have information about the place, some have information on directly shared with the community. It was not clear how often the site management teams were meeting with the communities, and the purpose of the meetings. In some sites it seems that the meetings were not organized, reason of maybe some question and tensions about activities from sectoral partners. Not all the sites were equipped with complains boxes.



CCCM recommendations:

1. Ensure that the site management team, in coordination with the site administrator, is organizing regular meetings with the service providers of the site, and with the site committees
2. Needs to ensure the role and responsibilities of the SMT vis-à-vis of the partners and the authorities
3. Improve the communication with the IDPs, and standardize the approach:
 - a. Complain box
 - b. Information on How is doing what
 - c. Awareness campaign for fire prevention / flood mitigation / hygiene

The lack of coordination is raising the important of using on monthly basis the Site Monitoring System. This will support a better coordination, better communication and standardization of services and activities in managed sites.

5 - Needs for CCCM partner in Al Dhale'e to cover IDP sites

The CCCM mission was focusing to Ibb hub, therefore for the situation assessment the CCCM team visited the 3 Governorates (Ibb, Al Dhale'e, Taiz) under the authorities of DFA.

Only Al Dhale'e shows a critical situation with no CCCM partner present in the DFA part. During the discussion with SCMCHA, they raised this problem, asking the CCCM National coordination to find as soon as possible a partner to provide Site Management.

Situation in the non-managed sites in Al Dhale'e is similar between the sites. Needs for shelter maintenance, site maintenance, and improvement of infrastructure are visible. Same for the WASH with water trucking stopped, and a need to establish site committees to empower the community to do activities such hygiene campaigns.



As in the other Governorate the CCCM team had meeting with SCMCHA. Here, in Al Dhale'e we assessed the sites with SCMCHA. SCMCHA urge the CCCM to identify a partner to do site management. However, the CCCM capacity is currently not allowing to have more site coverage.

CCCM recommendations:

1. Establish a light line of response of site management to cover this governorate with site management. This should be advocate to donors to obtain funds.
2. Raise the lack of coverage at ICCM national level

6 - Needs for livelihood activities

In the three governorates, in all sites assessed, the IDP communities have highlighted the need for livelihood to depend less on humanitarian aids and to have more resilience.

From CCCM team, we identified different context based on the population but also location of the sites. The livelihood options could be for us a great opportunity to reduce some needs. However due to the lack of basic services the effect of livelihood implementation could be reduced.

Livelihood opportunity should be organized with the CCCM Site Monitoring Team on the case by case. A unique model would not be possible based on the location of the sites if the site is urban or rural.

The livelihood option could be assessed under the tri-cluster to also include women in the activities.

CCCM recommendations:

1. At national level a review of all the different types of livelihood activities will be organized to have a better idea of the options and on the cost of them.
2. Advocacy messages will be shared to ICCM and with donors.
3. Support the Site Management Teams to empower the IDP communities. This option will reduce the dependency on humanitarian support and will improve the sites situation.

Follow up and action from CCCM

1. **Advocacy to donors for more funds. Option of QIPS or funds to partners with lack of resources.**
2. **Tri-cluster coordination with SCMCHA on flood exposure to find adequate solutions:**
 - a. *Flood mitigation.*
 - b. *Partial or total relocation => to existing or new sites (based on SCMCHA involvement).*
 - c. *Find alternative solution.*
3. **Remind the Roles and Responsibilities in CCCM to all partners, to avoid issues on uncoordinated activities in managed sites.**
4. **Work with all the Sub-National CCCM coordinator to establish a list of potential livelihood activities.**
5. **Establish more guidance on empowerment of IDP communities for daily activities.**
6. **Ensure harmonized approach in the site's activities between CCCM SMT partners.**