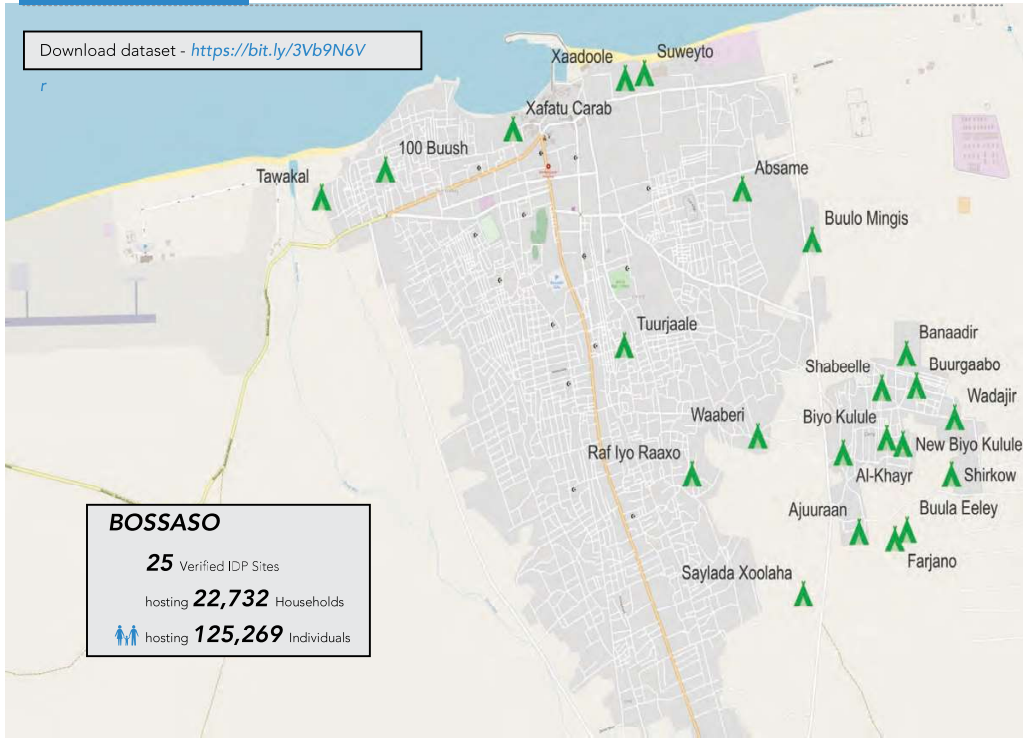


Download dataset - <https://bit.ly/3Vb9N6V>



Map of verified IDP sites in Bossaso- November 2022

Assessment overview

IDP site verification exercise was conducted in Bossaso in November 2022 led by the DRC and PSA .

25 IDP sites were identified hosting 22,732 households or 125,269 individuals. Compared to the last site verification conducted in June 2022, there was an increase of 1,605 Households or 2,177 individuals. The number of IDP Sites remained the same.

Demographic data of IDPs living in Bossaso

25 Verified IDP Sites
hosting **22,732** Households
hosting **125,269** Individuals

Male (45%)	Female (55%)	Age Group
26%	29%	(0-4)
32%	31%	(5-17)
31%	30%	(18-59)
10%	10%	Above 60

People living with disability

Using the Washington Group Disability Questions, statistics of people living with disabilities were derived

- 622 (50% Female)** have difficulty with seeing (even wearing glasses)
- 417 (52% Female)** have difficulty with hearing (even using a hearing aid)
- 377 (46% Female)** have difficulty with communicating and/or understanding
- 650 (44% Female)** have difficulty with walking and/or climbing stairs
- 1,369 (57% Female)** have difficulty with dressing and/or washing
- 553 (54% Female)** have difficulty with remembering/concentrating

3,988 (3.18%)
people living with disability

Eviction Risk Mapping

IDP sites were assessed based on their risk of eviction. Several factors were put into consideration such as IDP site tenure, type of agreements in place and whether an eviction notice has been issued recently.

- 36%** of sites have a Tenancy (paying rent) ownership type of land tenure
- 56%** of sites have agreement in place
- 64%** of those that have agreements have written agreements
- 57%** of those that have agreements have no agreed end dates
- 44%** of sites have been issued with eviction notice within the last 3 months

60% of IDP sites have been classified as having extreme (44%) and high risk of eviction (16%)

Flood Risk Mapping

IDP sites were assessed based on their risk of flooding.

30% of the sites has been classified as extreme (always floods) and high (floods frequently)

