

Total Arrivals from Ethiopia


8,845

Individuals Registered
Source: UNHCR, COR
As of 31 December 2022

3,007

Households Registered

Introduction:

In support of the Government of Sudan's response to the ongoing influx of refugees from Ethiopia's Tigray region to eastern Sudan, UNHCR, partners, and other UN agencies set up a new refugee settlement in Blue Nile. First group of refugees were relocated to this site on at the end of 2020 and individual biometric registration is ongoing. The dashboard below presents the population profile for Camp 6.

Persons With Specific Needs


985

Individuals


377

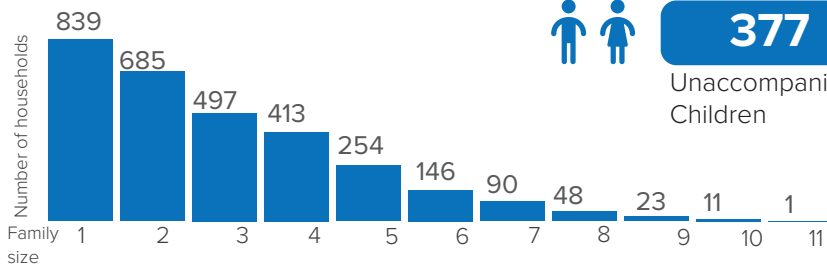
Unaccompanied/Separated Children

Country of Origin

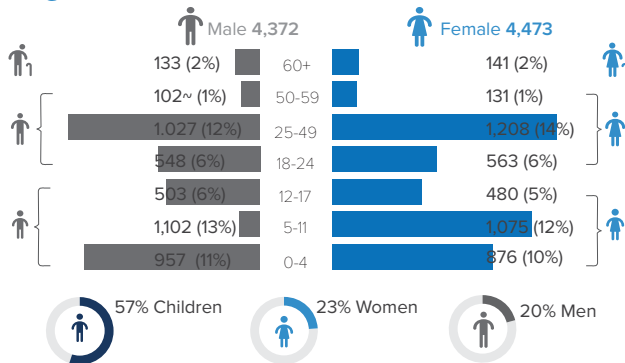
8,845

Ethiopians

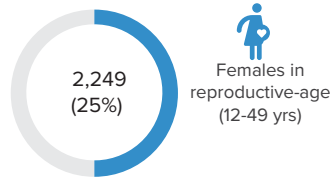
Family Size



Age-Gender Breakdown

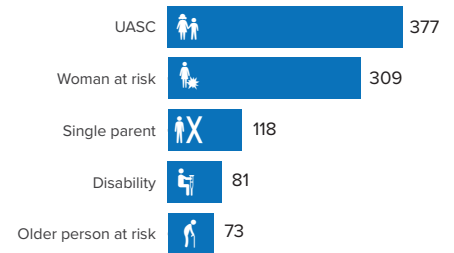


Reproductive- Age Women/Girls

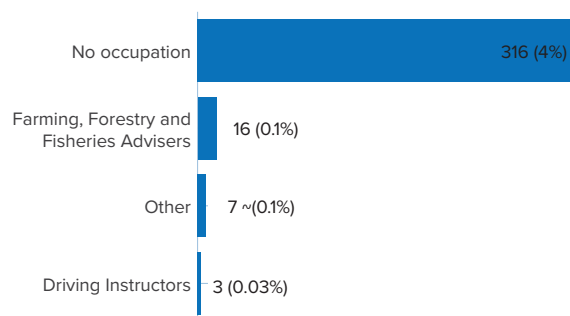


Percentages related to total population

Specific Needs (top 5)


Source: ProGres v4/Rapp
*UASC: Unaccompanied or separated child

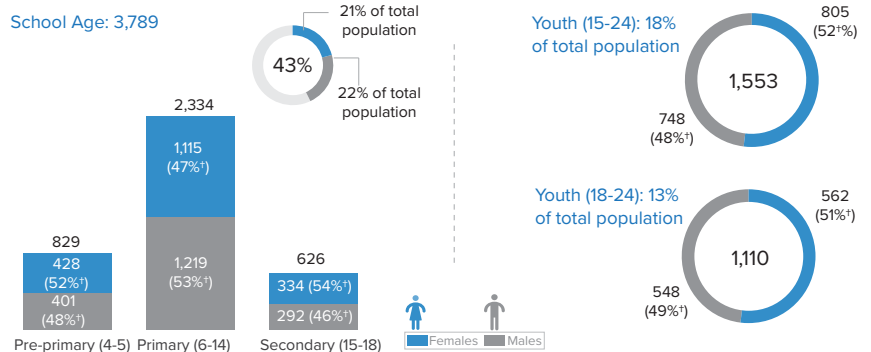
Occupation (Top 10)



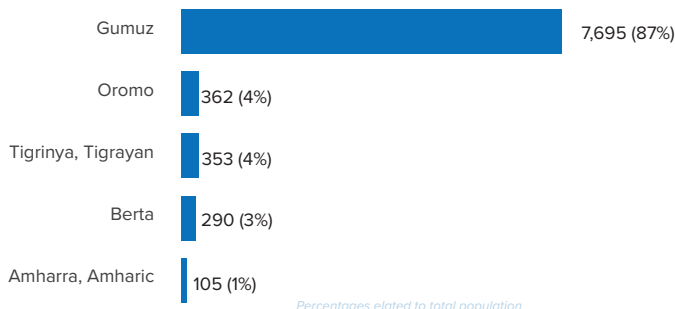
8,503 Individuals with no occupation data

Percentages related to total population

School Age Children and Youth

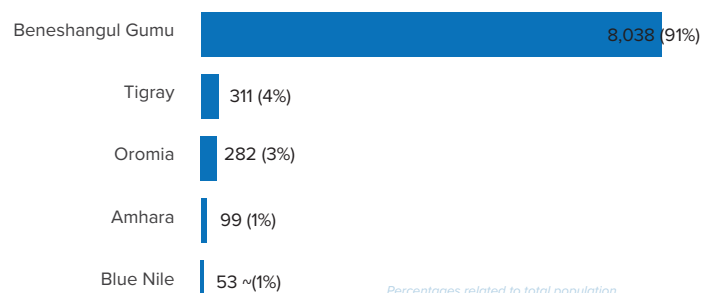


Ethnicity (Top 5)



Percentages related to total population

Top 5 Regions of Origin (Ethiopia)



Percentages related to total population