

**KEY POPULATION STATISTICS**

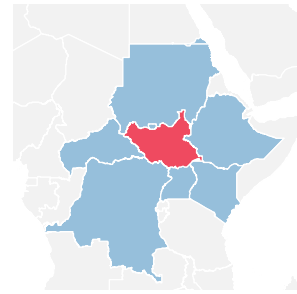
**4.92** MILLION  
REFUGEES & ASYLUM-SEEKERS

**11.65** MILLION  
INTERNALLY DISPLACED PERSONS

**166,392**  
REFUGEE RETURNEES IN 2022

The East and Horn of Africa and Great Lakes region is host to some 4.92 million refugees and asylum seekers, the majority (2.21 million) from South Sudan. A further 11.65 million people are internally displaced in the region, as a result of conflict and natural disasters. A total of 8,274 refugees returned to their countries of origin in December 2022.

**SOUTH SUDAN SITUATION**



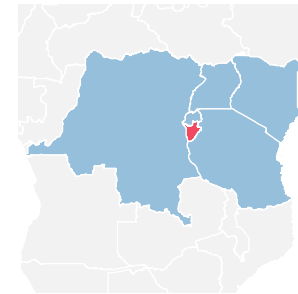
**2.27** million  
South Sudanese refugees in neighbouring countries

**2.23** million  
Internally displaced in South Sudan

**627,028**  
Refugee returnees since Nov 2017

**310,520**  
Refugees hosted in South Sudan

**BURUNDI SITUATION**



**323,658**  
Burundian refugees in neighbouring countries

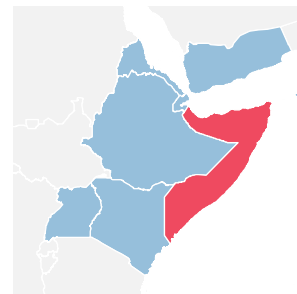
**7,600\***  
Internally displaced in Burundi

**207,567**  
Refugee returnees since Sept 2017

**88,599**  
Refugees hosted in Burundi

\*The 7,600 IDP figure refers to the IDPs of concern to UNHCR. This figure has been revised down from the total 83,588 IDPs reported in Burundi (IOM/DTM), the majority who are displaced due to natural disasters

**SOMALIA SITUATION**



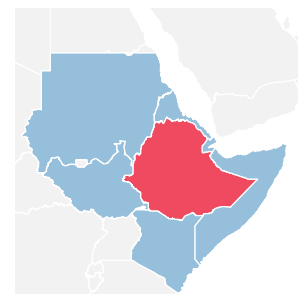
**686,368**  
Somali refugees in neighbouring countries

**2.97** million  
Internally displaced in Somalia

**93,683**  
Assisted refugee returnees since Dec 2014

**34,595**  
Refugees hosted in Somalia

**ETHIOPIA SITUATION**



**146,086**  
Ethiopian refugees in neighbouring countries

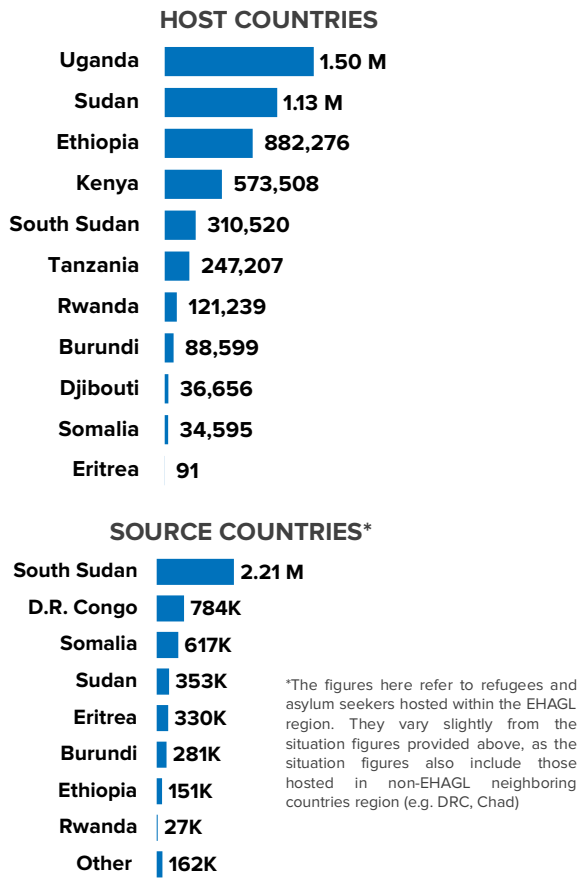
**2.73\*\*** million  
Internally displaced in Ethiopia

**285**  
Refugee returnees (2022)

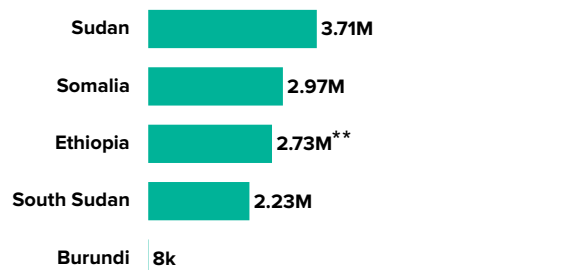
**882,276**  
Refugees hosted in Ethiopia

\*\*ERRATA CORRIGE: Sources : DTM Ethiopia - Endorsed National Displacement Report 13 (June - July 2022)

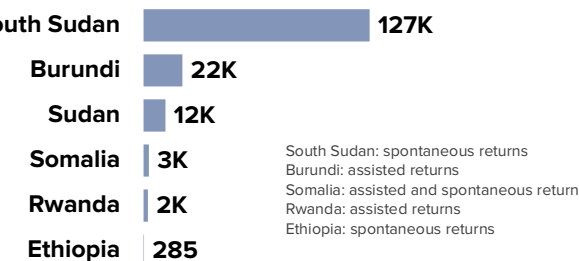
**REFUGEES AND ASYLUM-SEEKERS**



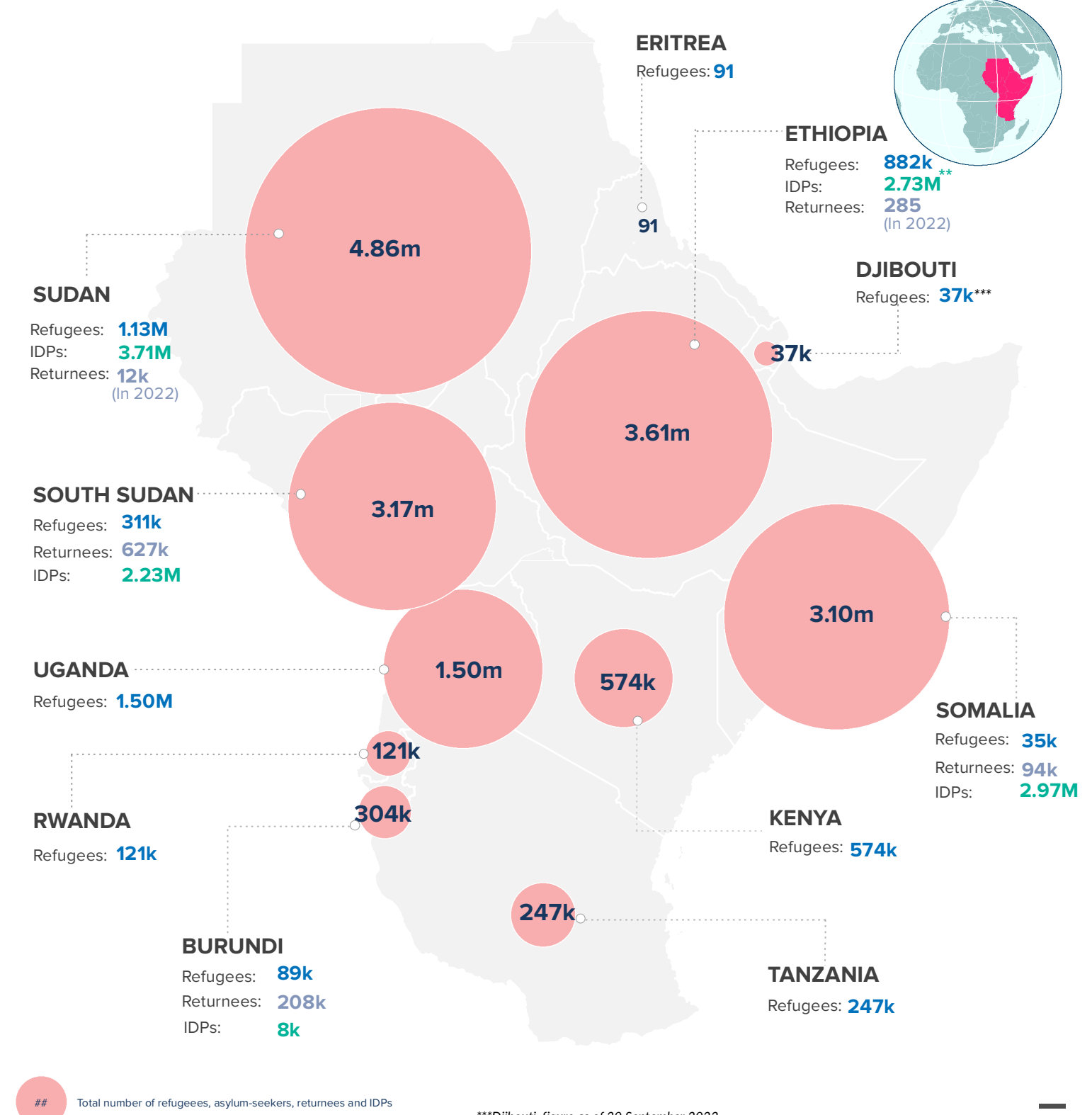
**INTERNALLY DISPLACED PERSONS**



**REFUGEE RETURNEES IN 2022**



**REFUGEES, ASYLUM-SEEKERS, REFUGEE RETURNEES and IDPs as of December 2022**



The boundaries and names shown and the designations used on this map do not imply official endorsement or acceptance by the United Nations. Final boundaries between the Republic of Sudan and the Republic of South Sudan and Somalia and Ethiopia has not yet been determined. Final status of the Abyei area is not yet determined.