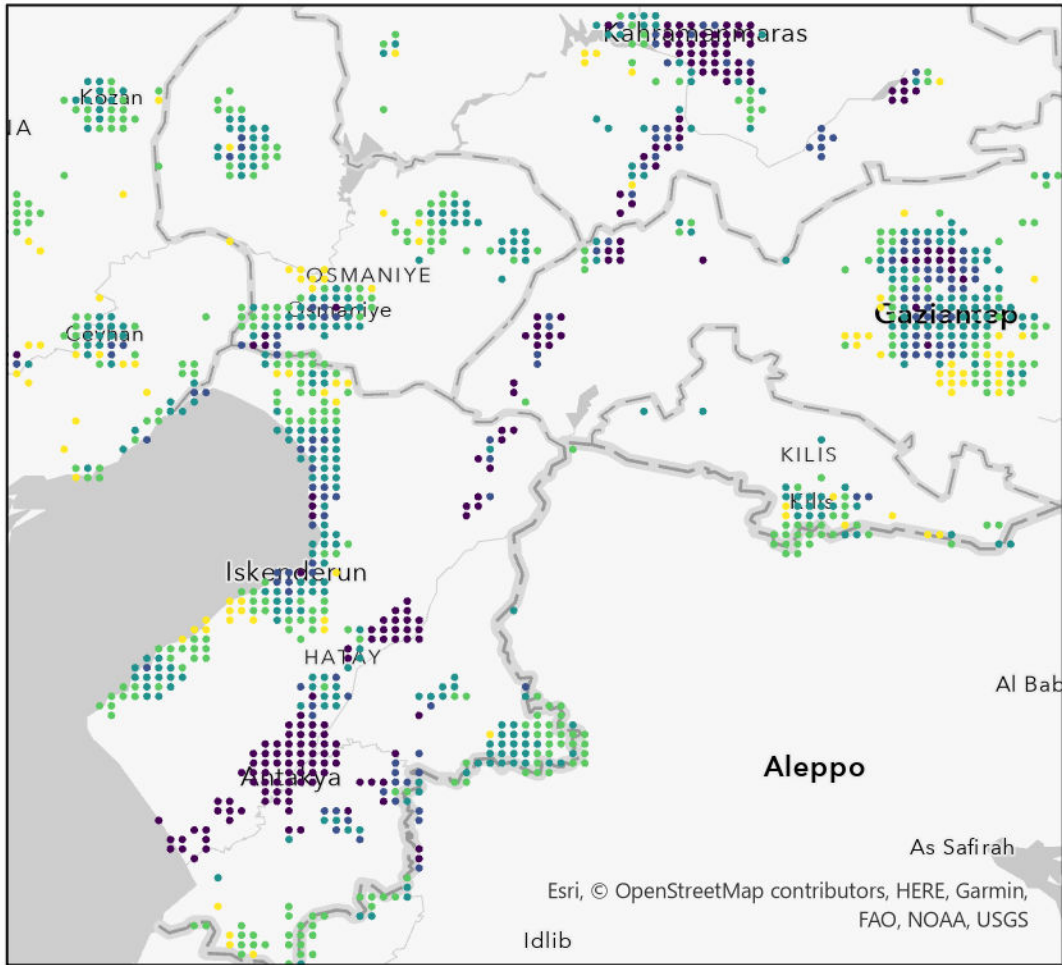
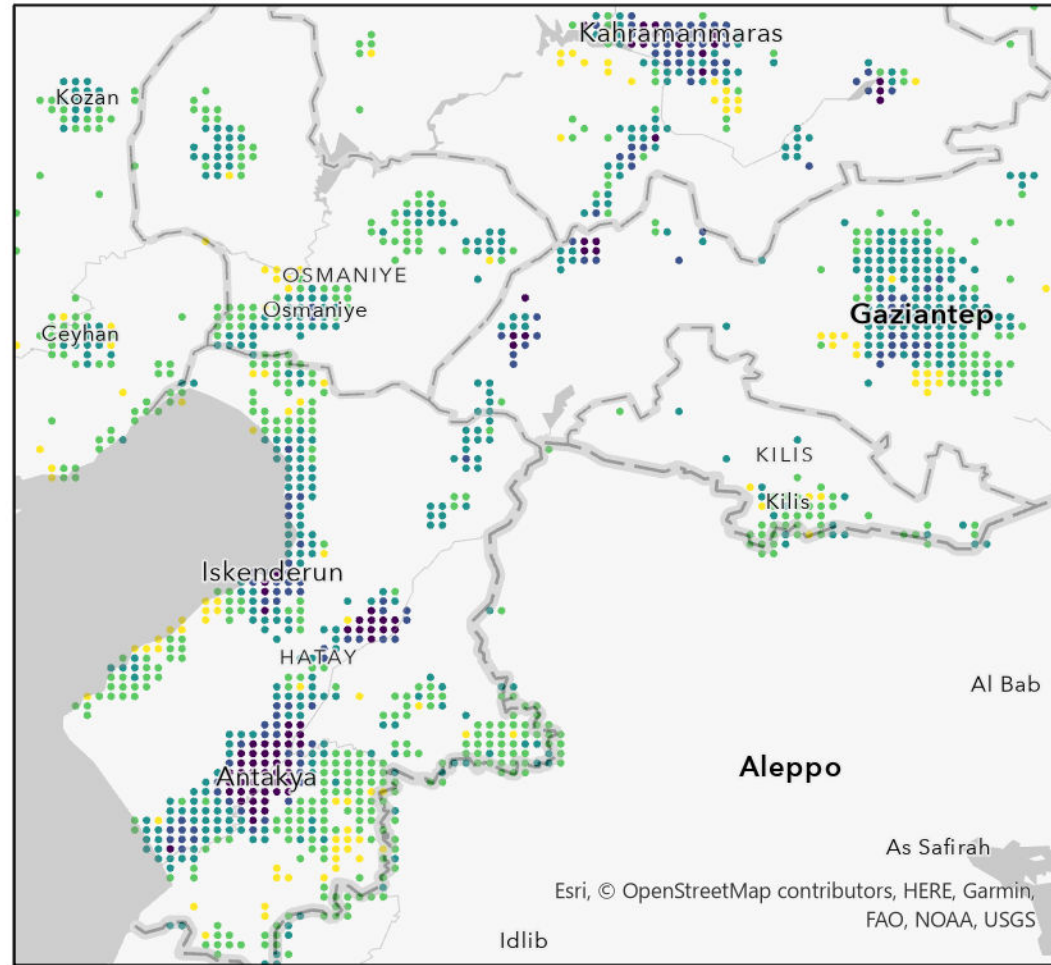


Feb 9, 2023 at +3 GMT



Feb 15, 2023 at +3 GMT



# Earthquake in Turkey and Syria

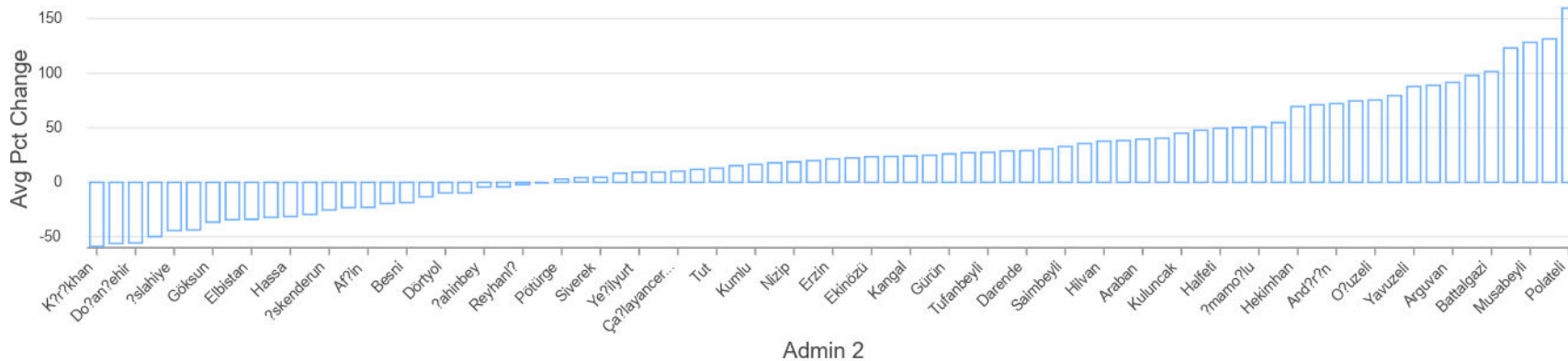
Between the 2/9 and the morning of 2/15 population dynamics across the earthquake affected zone in Turkey changed drastically.

Increased numbers of points recorded by Facebook indicate a significantly higher number of tiles by February 15th which are meeting privacy protection thresholds, resulting in what appears to be a much denser population pattern overall.

The province of Hatay saw increases in the corridor between Antakya and the Syrian border above 100% compared to baseline. Similar patterns occurred outside Kahramanmaraş and Osmaniye. Areas of downtown Gaziantep which were between -50% to -90% on the 9th were by the 15th increased between 1% and 25%.

Some of the increased activity is doubtless attributable to the relief effort, but how much is unknown.

Average Pct Change in FB Pop (2/5 to 2/15)



(Source: Data for Good at Meta)

## Legend

FB Population percent\_change

- -91 - -50
- -49.9 - -25
- -24.9 - 25
- 25.1 - 100
- 100.1 - 668

Data sources: USGS, Esri, Data for Good at Meta  
 CrisisReady is a collaboration between Direct Relief and Harvard Data Science Initiative (<https://crisisready.io>)

