

IOM TÜRKİYE FLASH APPEAL
2023 EARTHQUAKE RESPONSE
FEBRUARY—APRIL 2023



\$110M

FUNDING REQUIREMENT

9.1M

PEOPLE AFFECTED

813K

PEOPLE TARGETED

IOM teams delivered blankets for the affected populations in Mersin to be distributed through national partners on the ground. © IOM Türkiye 2023

SITUATION OVERVIEW

An earthquake of 7.7 magnitude with the epicenter in the south-east of the country, struck Türkiye on 6 February 2023 at 04:17 AM, followed by 3,858 aftershocks. Another earthquake of 7.6 magnitude occurred at 13:24 PM. The earthquakes came at the peak of winter and are considered the largest earthquakes for centuries in the region. For the affected provinces, which are home to over 1.74 million refugees and migrants, the Government of Türkiye has ramped up the response and has requested international assistance to support its emergency responders amid the harsh winter conditions.

As of 15 February, at least 35,400 deaths and 105,500 injured were confirmed by the government in the Provinces of Adana, Adıyaman, Diyarbakır, Elazığ, Gaziantep, Hatay, Kahramanmaraş, Kilis, Malatya Osmaniye, and Şanlıurfa. More than 196,000 citizens have been evacuated from affected areas by 14 February, yet many are injured or missing as reported by the Turkish Disaster and Emergency Management Presidency (AFAD). The number of deceased is expected to continue to increase in coming days as search and rescue operations phase out; with response and recovery interventions picking pace.

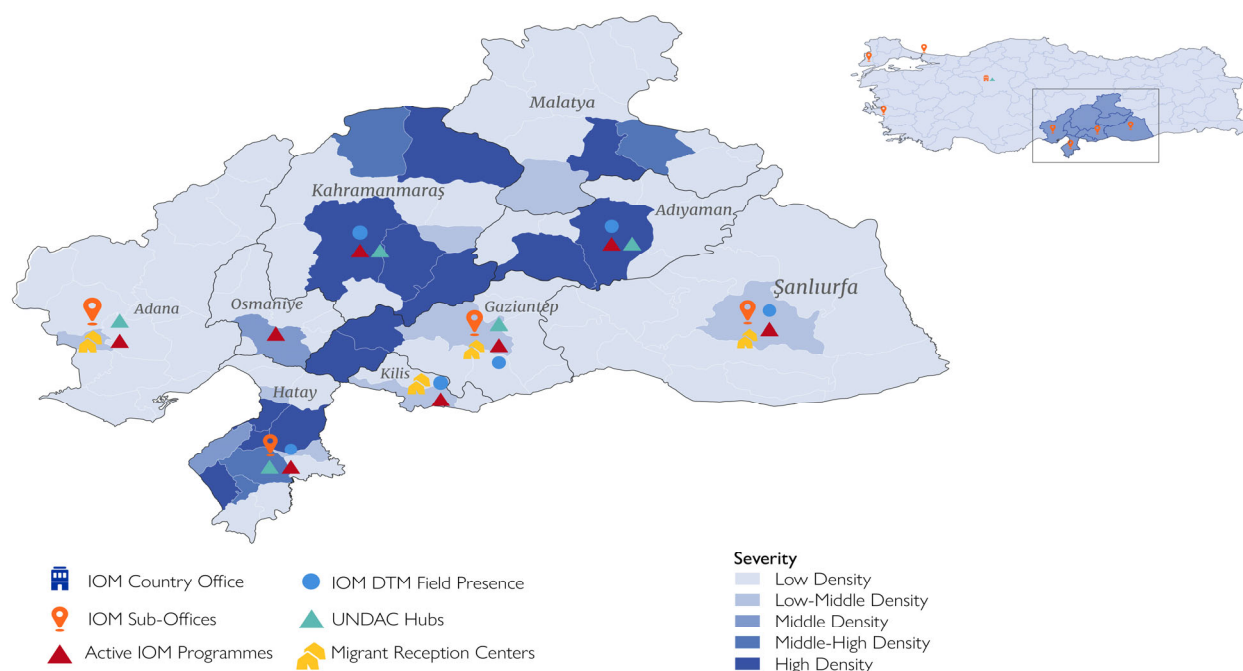
IOM's mappings and situational analyses suggest that at least 1.3 million people have been severely affected and displaced. Their immediate needs include shelter, heating, non-food items (NFIs), food items and health assistance. Prior to the earthquakes, the region hosted more than 1,5 million Syrians under Temporary Protection (SuTP), in addition to people under international protection, labour migrants, foreign

students and migrants in irregular situations. The impact of the disaster on the migrant population is yet to be assessed. Field observations confirm, however, that affected populations are exposed to compounded risks, including family separation, loss/damage of civil status and documentation, exploitation and abuse including child protection risks and trafficking in persons and psychosocial stress and trauma.

IOM's Flash Appeal is fully aligned with the Inter-Agency Flash Appeal for Türkiye. The proposed activities complement those in the Regional Refugee Response Plan (2023), and capture the additional needs following the devastating earthquakes. The figures in this appeal will be revised in the days ahead in further coordination with the government and partners.

IOM TÜRKİYE APPEAL (USD)	
Early Recovery & Livelihoods	9 M
Emergency Shelter / Non-Food Items	68.5 M
Health	5.5 M
Protection	10.3 M
Temporary Settlements Support	7 M
Water, Sanitation and Hygiene	9.7 M
Total	110 M

IOM Capacity to Respond in EQ Affected Areas of Türkiye



The boundaries and names shown and the designations used on this map do not imply official endorsement or acceptance by the International Organization for Migration (IOM)

IOM CAPACITY

IOM Türkiye is one of the Organization's largest missions globally, with over 1,371 staff nationwide, including 771 staff based in South Türkiye. IOM has a strong presence in the earthquake-affected areas, which also host the majority of refugees, with offices in Adana, Gaziantep, Hatay, Kahramanmaraş, and Şanlıurfa. IOM Türkiye's operations are overseen and supported through the main office in Ankara. IOM has been implementing refugee response programming since 2015, prioritizing the development of a strong protection network, and strengthening and deepening the resilience approach, enhancing self-reliance through economic opportunities, and contributing to durable solutions for Syrian refugees by supporting their inclusion into the Turkish society. IOM's expertise crosses various sectors including those relevant to the current crisis, namely Emergency Shelter and Basic Needs, Early Recovery and Livelihoods, Protection, including Mental Health and Psychosocial Support (MHPSS), and Temporary Settlements Support.

IOM works before, during and after crises situations and is uniquely prepared to support complementary and simultaneous response and recovery efforts along the entire response and recovery spectrum. IOM has extensive experience working directly with communities and supporting the Government of Türkiye in providing essential services, risk mitigation and protection for vulnerable groups, social cohesion, and contributing to the resilience and self-reliance of vulnerable refugees, migrants, and host communities through a people-centred response and recovery approach. IOM will consider the needs of all affected populations, including migrants, refugees and host communities in impacted districts throughout its earthquake response and within the interagency response framework.

IOM engages to ensure safety and dignity, avoiding causing harm and guaranteeing meaningful access to assistance for all persons in need, without discrimination. Particular attention will be given to effective participation and empowerment of the community, ensuring that Complaint and Feedback Mechanisms (CFM) and relevant policies such as the Child Safeguarding Policy are in place to prevent misconduct and guarantee accountability to affected populations. Monitoring, Evaluation, Accountability, and Learning (MEAL) processes, will ensure gender and protection mainstreaming, and the inclusion of potentially marginalized individuals such as people with disabilities. IOM is supporting the UN efforts to achieve green and sustainable recovery from natural hazards and will embed throughout its response environmental standards that are in line with international best practices.

EMERGENCY SHELTER / NON-FOOD ITEMS (S/NFI)

In order to meet the needs of affected households deprived of their homes, IOM will:

- Support access to basic household winterization items, to include, amongst others, winter-specific NFI kits, electric heaters and solid fuel, procured locally where possible.
- Assist affected households in rehabilitating damaged houses, by providing construction kits and tools and cash assistance for rehabilitation services and technical support through information, education and communication materials and in-person guidance from engineers.
- Provide emergency shelter assistance by supplying prefabricated containers for temporary short and medium-term accommodation.
- Provide cash-based interventions to enable families who have lost their homes and livelihoods to afford short-term rentals and food.
- Conduct winterization rehabilitation works and provide in-kind assistance to social institutions and community facilities to meet the basic needs.
- Provide supply chain support to authorities and humanitarian partners to enable efficient provision of humanitarian assistance for affected persons.

Funding required

\$68,500,000

Target individuals

570,000

EARLY RECOVERY AND LIVELIHOODS (ERL)

To enable families affected by the earthquakes to move towards recovery and resilience, IOM will:

- Establish financing mechanisms that provide Small and Medium Enterprises with financial capital to contribute to their recovery and/or expansion such as Enterprise Development Funds.
- Provide one-off cash assistance to primary and secondary economic sectors affected by the earthquakes.
- Provide cash and vouchers for seeds, fertilizer, and hand tools.
- Rehabilitate productive assets (e.g., livestock).
- Conduct repairs and/or rehabilitation of community infrastructure and spaces affected by the earthquakes and identified with relevant national and local authorities.
- Provide short-term cash assistance to encourage communities to return to work and enable some critical social and municipal services to be restored at the local level.

Funding required

\$9,000,000

Target individuals

45,000



Destruction in Gaziantep, the day after the massive quake which has killed more than 35,000 people in Türkiye (as of 15 February).
© IOM Türkiye 2023/Olga Borzenkova

HEALTH

In order to support the health needs of affected populations as a result of the earthquakes, IOM will:

- Provide direct assistance including health information support, telemedicine, and medical consultations in different languages.
- Support the procurement and distribution of essential medical equipment and supplies for affected health facilities, in coordination with the Ministry of Health, potential suppliers, and local healthcare facilities and authorities.
- Support medical/orthopaedic referrals and bi-directional transportation of earthquake victims needing continuity of care for existing health issues as well as specialized care, including individual physical rehabilitation in secondary and tertiary healthcare facilities.

Funding required

\$5,500,000

Target individuals

21,000

PROTECTION

Affected populations are exposed to compounded protection risks. To address these risks, IOM will:

- Conduct rapid protection assessments to better understand the contextualized risks facing diverse groups affected by the earthquake. All assessment findings will be used to tailor the Protection response alongside informing all humanitarian actors on mainstreaming interventions.
- Aim to sensitize communities and at-risk populations on the identified protection risks alongside information on response services which remain functional or any adaptations to lifesaving care.
- Participate in multisectoral safety audits prioritized within temporary emergency shelters in order to identify risks that can be mitigated in real time. Practical efforts to enhance safety will be subsequently supported by IOM and monitored throughout the response.
- Implement protection response through a comprehensive, integrated, community-based approach to address the most immediate protection needs of host communities, migrants and refugees, as well as emergency response actors, with information on services, referral to non-specialized and specialized services, including Child protection and GBV specialists, and with a focus on direct, specialized services, through individual protection assistance, including cash and in-kind support for specific needs identified through IOM's field teams and its protection monitoring interventions, safe shelters.
- Provide Psychological First Aid (PFA) and mental health and psychosocial support (MHPSS), support family tracing and reunification, unaccompanied and separated children, and provide access to recreational activities for children.
- Support comprehensive case management services for those in need of additional protection, in coordination with relevant service providers, both state and non-state alike.

Funding required

\$10,300,000

Target individuals

20,000



IOM teams unload relief items delivered to national partners for the affected populations in Kilis.
© IOM Türkiye 2023

TEMPORARY SETTLEMENTS SUPPORT

In order to complement the Government of Türkiye's interventions for populations residing in temporary settlements and promote smooth flow of information, IOM proposes to:

- Through its Displacement Tracking Matrix/Migrant Presence Monitoring (MPM), continue providing regular situation reports, including on the number of locations and needs of the displaced local and migrant populations.
- Support the initial evidence generation through province and sub-province-based damage assessments to capture evidence-based data on the scope of the disaster, locations, needs and intentions of affected and displaced people.
- Collect quantitative and qualitative data through surveys with earthquake survivors and field-level key informant interviews.
- Utilize data collection in the field to serve as a tool to monitor and identify the scope of displacement, settlement typologies, temporary accommodation site mapping and assessments, sectoral needs and challenges in accessing services among affected and displaced populations.
- Work in close coordination with the Government of Türkiye and humanitarian partners to ensure that displaced populations have access to basic services through the establishment of support mechanisms that will facilitate the delivery of services and the identification and referral of urgent gaps within temporary settlements through coordinated efforts.
- Improve living conditions in temporary settlements to increase dignity and privacy, as well as reduce health and protection risks for displaced populations through infrastructure repairs and, if necessary, relocation of communities to safer areas.
- Establish community focal points within temporary settlements in order to facilitate community engagement and participation mechanisms.
- Directly work to strengthen the capacities of government-led temporary settlement support measures through technical and in-kind interventions.

*In addition to affected populations, planned activities will also support government authorities and humanitarian partners.

Funding required

\$7,000,000

Target individuals

17,000*

WATER, SANITATION, AND HYGIENE (WASH)

To increase communities' access to safe water, sanitation and hygiene services, IOM will:

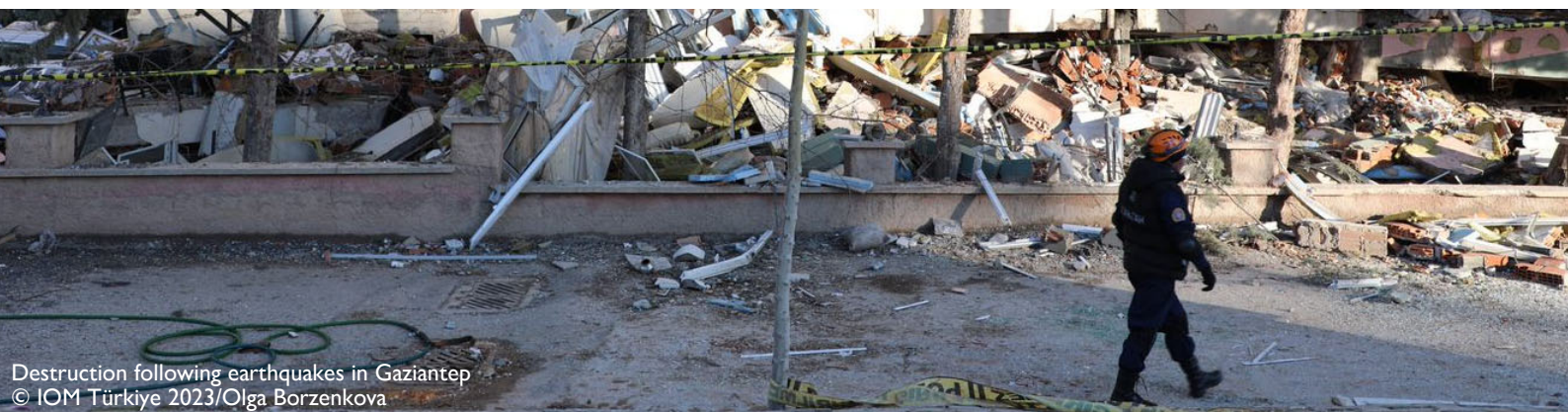
- Distribute hygiene kits and items as needed depending on community needs, in accordance with the recommendations of other WASH and local government partners.
- Establish safe and clean drinking water distribution points in the targeted areas.
- Provide essential equipment for the rehabilitation, management, operation and maintenance of water supply networks damaged during the earthquakes, in coordination with main water suppliers.
- Conduct rehabilitation works, such as replacement and/or repair of water supply elements, sewerage, and wastewater management systems, rehabilitation of sanitary structures with the installation of appropriate plumbing equipment, as well as repair or substitution of water containers in social institutions and key community entities.
- Implement community-based hygiene promotion, with emphasis on prevention of water-related diseases.

Funding required

\$9,700,000

Target individuals

140,000



Destruction following earthquakes in Gaziantep
© IOM Türkiye 2023/Olga Borzenkova

COORDINATION AND PARTNERSHIPS

IOM has been working in the earthquake-affected provinces since 2015 and coordinates closely and regularly with various government counterparts including the Turkish Disaster and Emergency Management Presidency (AFAD), the Presidency of Migration Management (PMM) and the Provincial Directorates of Migration Management (PDMMs), as well as with municipalities to ensure activities are aligned with national priorities. Through regular communication with the PDMM, IOM has developed strong rapport and relationships which have helped ensure IOM's interventions remain relevant to the context. Moreover, IOM will continue to work closely with other government actors, UN agencies, and I/NGOs involved in the response, as well as provincial directorates, sub-governorate offices and district and provincial municipalities for all activities in the affected provinces.

Mainstreaming disability in programs and activities has been a key area for IOM Türkiye in recent years, particularly through the development of a road map towards inclusive programming in 2021, with the aim of strengthening active engagement of persons with disabilities and their representative organizations. In addition to internal foundational work, IOM Türkiye co-leads the Disability Inclusion Task Team which was established under the 3RP mechanism to coordinate and ramp up the disability mainstreaming in programs designed and implemented by 3RP partners.

IOM is a key member of interagency coordination efforts in Türkiye related to the crisis. Activities will be coordinated alongside actors on the ground to minimize the risk of duplication. IOM will work with a network of Turkish NGO partners, to ensure those most in need are reached with services, including in rural and remote areas.



IOM processes at Adana airport the first of a series of USAID in-kind donations, consisting of hygiene and kitchen kits bound for Hatay.
© IOM Türkiye 2023

PREPAREDNESS AND RESPONSE DIVISION
prd@iom.int

DONOR RELATIONS DIVISION
drd@iom.int
+41 22 717 9111

INTERNATIONAL ORGANIZATION
FOR MIGRATION
17, Route des Morillons
CH-1211 Geneva 19, Switzerland
+41 22 717 9111
hq@iom.int | www.iom.int



YOU
CAN HELP
DONATE
NOW