

Linkages between Humanitarian assistance – Disaster Preparedness and Response - Social Protection (HA-SRSP) in acute crises:

*where do we stand in East Africa?
Role for SP/ FD wg?*

DG ECHO regional office, Nairobi, 16 Nov. 2022



Session objectives

- Quick stock-take of linkages HA-SRSP in acute crises
- Potential role to play for regional SP/ FD wg

Agenda

- *Roundtable- 15' min'*
- *Introduction ECHO – 15 min'*
- *Discussions - 1 h*
 - Context on SRSP: policy landscape, available research/ scopings
 - Current crises responses (conflicts, food/ nutrition crises)
 - Existing dialogue mechanisms/ platforms for HA-SP-DPR actors



I – Policy framework and references

EU policy framework

EU

- 2021 EU's [Communication on Humanitarian Action](#): includes 8 key actions on nexus, including on SRSP „*Expand support for cash-based, shock-responsive social safety nets*”
- 2017 EU Council Conclusions on [Operationalising the H-D Nexus](#), and selection of 6 EU Nexus pilot countries
- 2016 World Humanitarian Summit : The Grand Bargain: strengthening the H-D nexus -> workstream on Cash, incl. *sub-group on Cash/ SP linkages* , *IASC nexus task force*
- 2016 EU's joint [Communication on Forced displacement and Development](#) “*Lives in Dignity: from Aid-dependence to Self-reliance*”, and 2018 Global Compact for Refugees (GCR)

Grand Bargain Cash Caucus final outcome document:

EU policy guidance and learning resources

2021 EU's [Communication on Humanitarian Action](#): includes 8 key actions on nexus, including on SRSP „Expand support for cash-based, shock-responsive social safety nets”

Policy guidance:

- DG ECHO 2022 [Thematic Policy on Cash Transfers](#)
- DG ECHO 2021 [Guidance Note on Disaster Preparedness](#)
- DG INTPA/ DG NEAR, DG ECHO 2019 [Social Protection across the Humanitarian-Development Nexus](#) guidance package (SPaN): overview on current body of knowledge, operational notes, [country case studies](#), and [SPaN E-learning](#): EU INTPA Academy, Capacity4dev public [CoP group](#), [Intpa SP Knowledge Base](#).
- DG INTPA Tools and Methods Series Reference, Document No 14 [Social transfers in the fight against hunger](#)

Learning resources/ examples:

- DG ECHO 2018 [Social Protection –Delivering on Humanitarian Emergencies and Crises](#).
- EHF 2022: notably [humanitarian talks](#) on HA-SP/ DM linkages in Asia, Middle East
- ECHO-internal [CoP on Cash/ BNA/ Social protection](#), e.g.: HAC [mapping cash – SRSSNs](#) (25/10/2021)
- The 2017 ECHO-funded inter-agency Technical Assistance Facility (WFP-led): [Strengthening social protection systems in fragile and forced displacement contexts](#)



Social Protection

Delivering on Humanitarian Emergencies and Crises

December 2018

2021

Disaster Preparedness

DG ECHO Guidance Note

2022

Cash Transfers

Directorate-General for European Civil Protection and Humanitarian Aid Operations

Tools and Methods Series

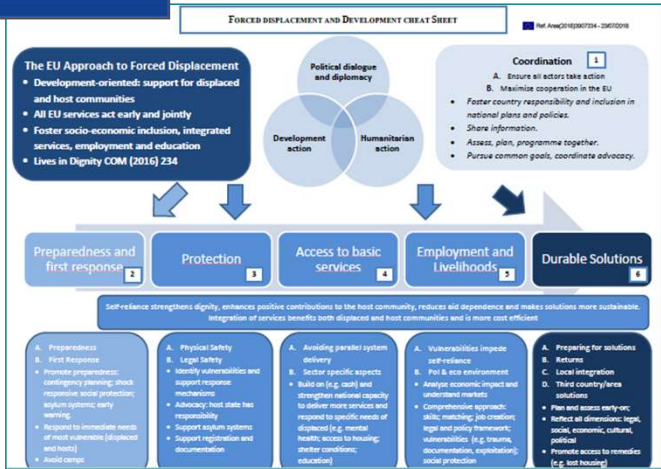
Reference Document No 26

Social Protection across the Humanitarian-Development Nexus: A Game Changer in Supporting People through Crises

February 2019

Reference Document

Guidance Package on Social Protection across the Humanitarian-Development Nexus



SPaN

Guidance Package on Social Protection across the Humanitarian-Development Nexus

Tools and Methods Series

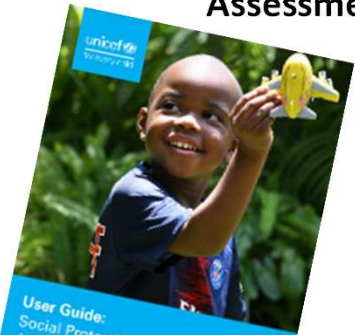
Reference Document No 14

Social transfers in the fight against hunger

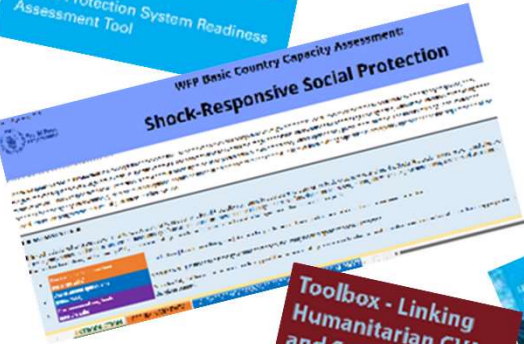
Ref: ECHO-DEV/2019/00017-012-20190008

2020

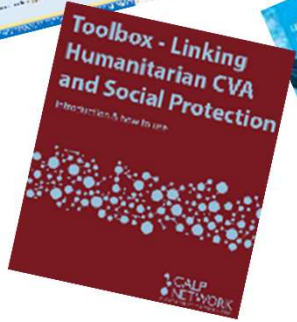
Assessment tools



User Guide:
Social Protection System Readiness
Assessment Tool



WFP Basic Country Capacity Assessment:
Shock-Responsive Social Protection



Toolbox - Linking
Humanitarian CVA
and Social Protection



Programme Guidance:
Strengthening Shock Responsive
Social Protection Systems



SHOCK
RESPONSIVE
SOCIAL
PROTECTION

Guidance/options analysis...



IDENTIFYING PRACTICAL OPTIONS FOR LINKING HUMANITARIAN ASSISTANCE AND SOCIAL PROTECTION IN THE COVID-19 RESPONSE

DANIEL LONGHURST AND GABRIELLE SMITH, WITH VALENTINA BARCA, KARIN SEIFERT, SIMON LITTLE, CALUM MCLEAN, SOPHIE PONGRACZ, AND EXPERTS ON THE SOCIAL PROTECTION APPROACHES TO COVID-19. EXPERT ADVICE HELPLINE (SPACE) - CONTACT: SPACE@OAL.COM September 2020



SOCIAL PROTECTION & JOBS
DISCUSSION PAPER
No. 1023 - SEPTEMBER 2021

Unbeated: A framework for connecting safety nets and humanitarian assistance in refugee settings
Roni Szyfer, Yehuda Baka, Ugo Gomringer, Alastair Luchins, and Shikhan Akhdy



Analysis/case studies/learning



Implementation of linked Humanitarian Cash and Social Protection interventions in response to COVID-19



The role of policy in creating the conditions of Humanitarian Cash and Social Protection linkages



Signing Up Protection Interventions in response to COVID-19



RESPONDING TO SHOCKS
USING SOCIAL PROTECTION
Principles and a framework for NGOs
OCTOBER 2021

Vinculando las transferencias monetarias con los sistemas de protección social en Latinoamérica



WFP's Work in Enabling Social Protection Around the Globe

Highlights of the World Food Programme's Contributions to Social Protection in a New Normal February 2021

OXFAM'S HUMANITARIAN SOCIAL PROTECTION APPROACHES IN THE CONTEXT OF COVID-19

A learning brief illustrating how responses can strengthen social protection systems

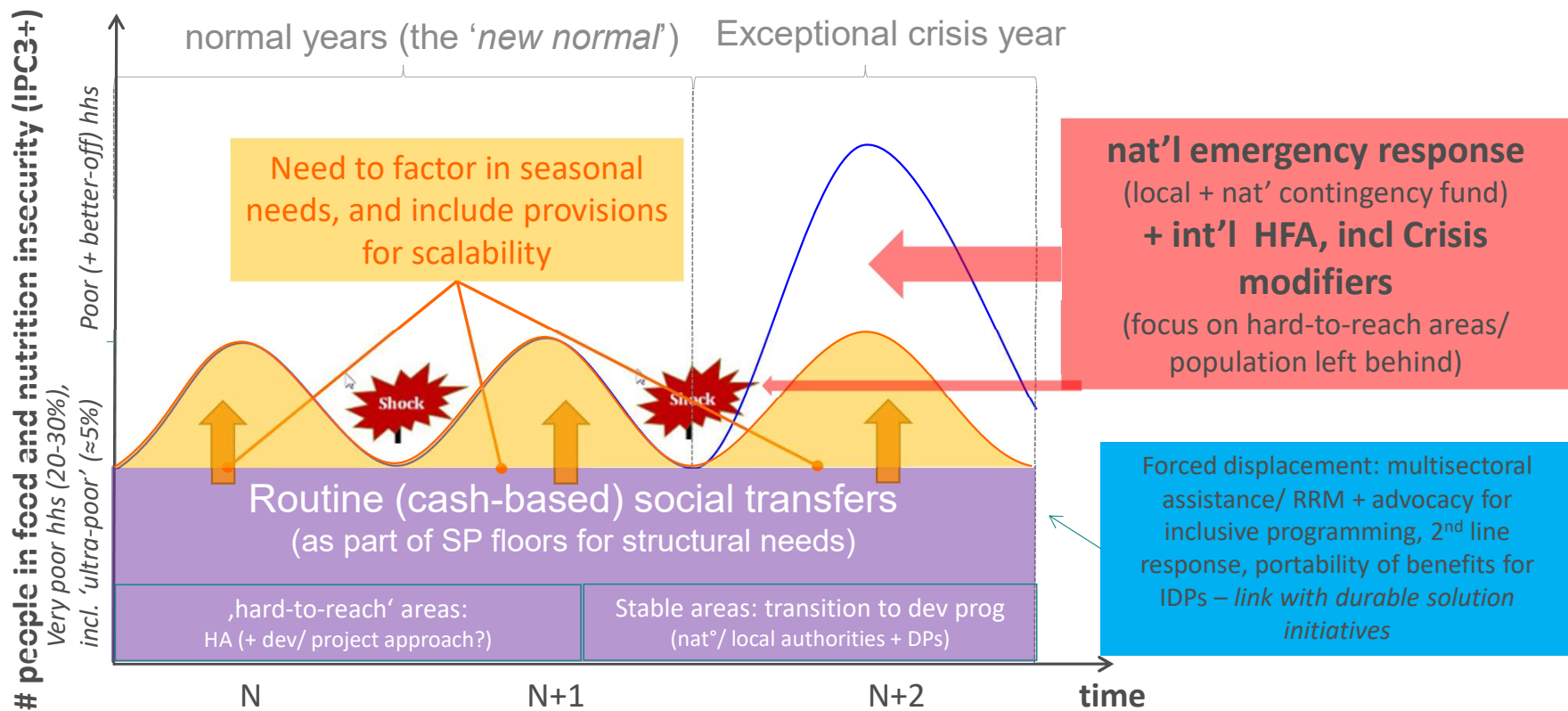
SEPTEMBER 2021 OXFAM

2021



II – POSSIBLE ENTRY POINTS FOR HA-SP-DPR LINKAGES

Hum'n entry point to social safety nets/ SP -> ongoing shocks/ crises and risks in different contexts

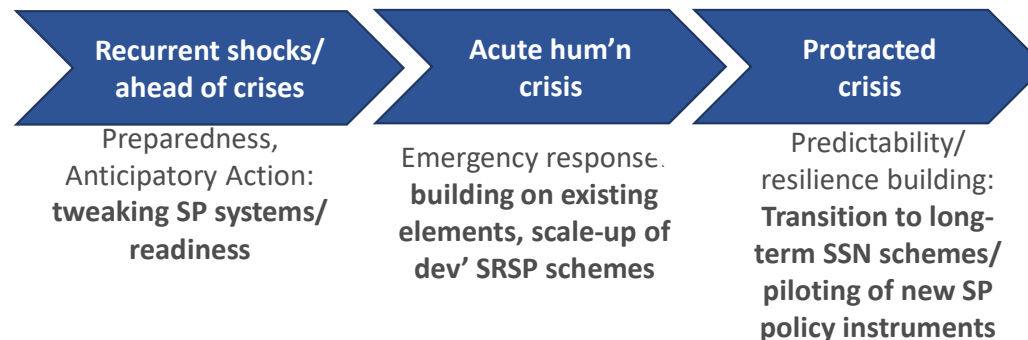


- + access to health/ nutrition services, e.g. free access to health with focus on children U5/ 1000 days
- + labour market interventions with focus on informal sector: minimum salary for casual labour, etc.
- + pro-poor/ inclusive/ nutrition-sensitive development programmes (rural/ urban)

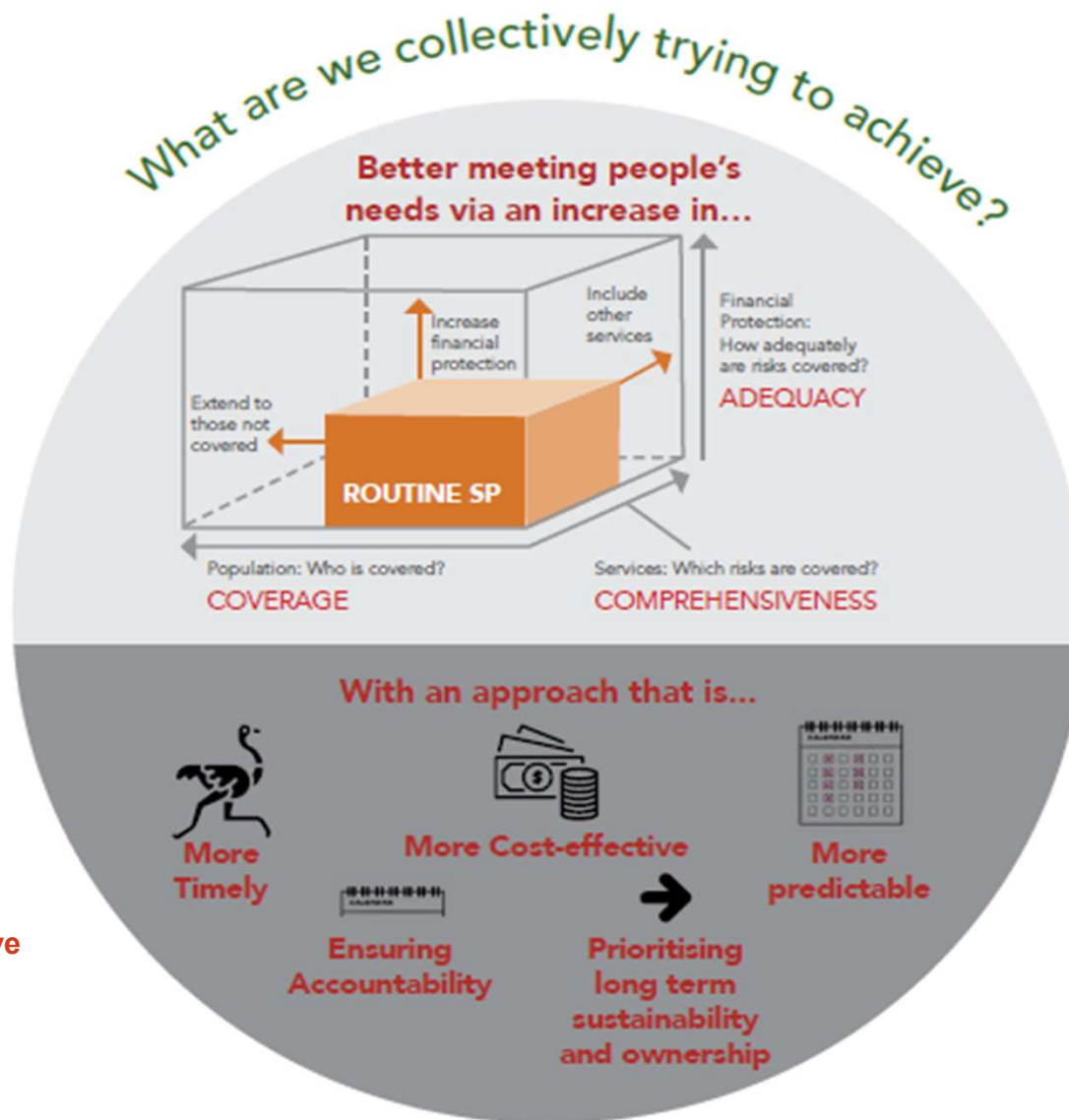
+ social care services/ protection

HA-SP linkages in crises contexts : potential joint objectives

- In crises, sufficient (humanitarian/ social) assistance with regards to **adequacy, coverage, comprehensiveness**, is provided to crises-affected households, in a joined-up way, mobilising all available H-D funding streams (based on shared needs analysis, programme design and response tracking tools), in line with **hum'n and protection principles**
- **timeliness and continuity** of free-of-charge services for crisis-affected population in need is ensured, whilst ensuring respect of humanitarian and protection principles, and minimum quality standards
- an increased proportion of crises-affected population in need is benefiting from needs-based/ predictable/ free-of-charge dev't-funded **long-term services**, and vice-versa (transitioning)



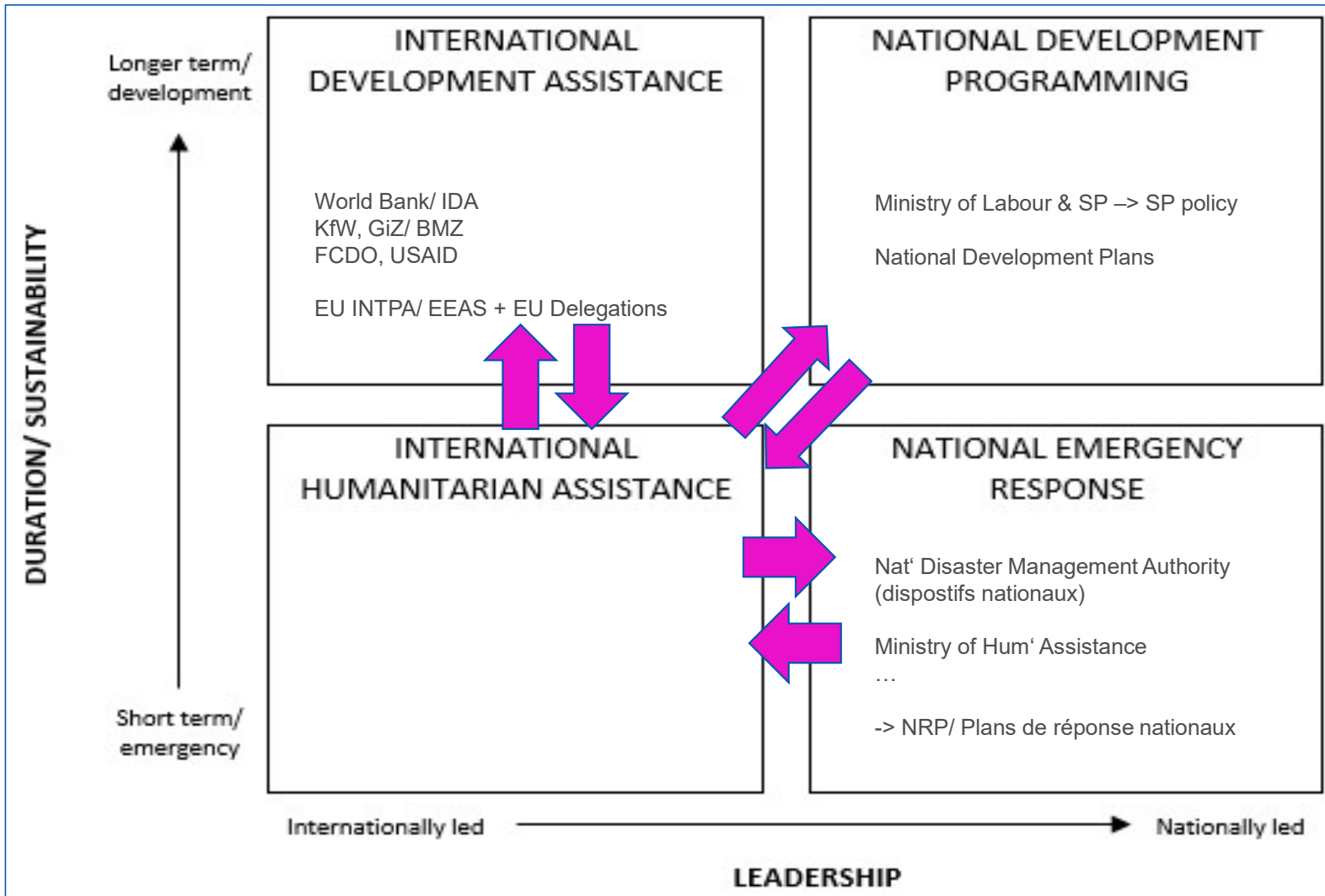
Shared outcomes across interventions



+ in line with human rights, do-no-harm and hum' and protection principles

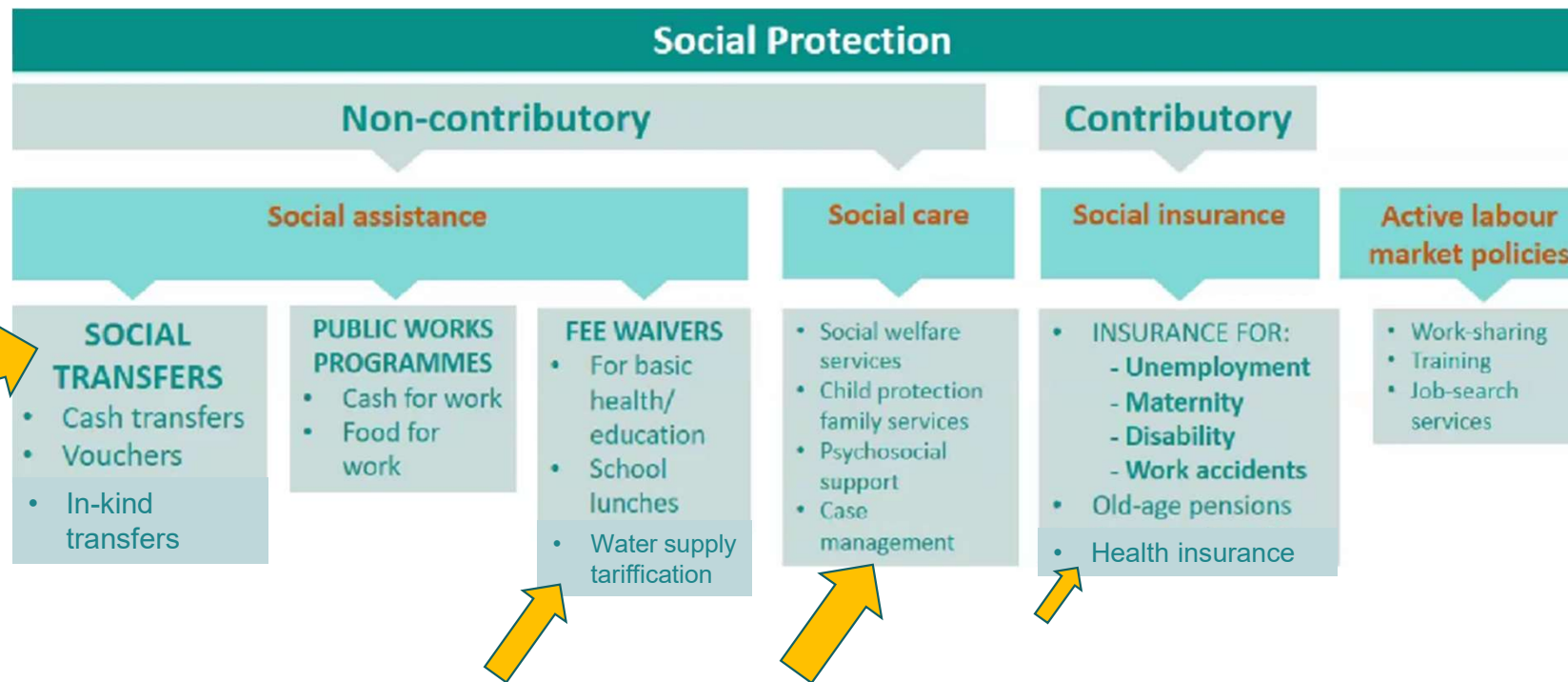
+ equitable and inclusive

SP across H-D nexus



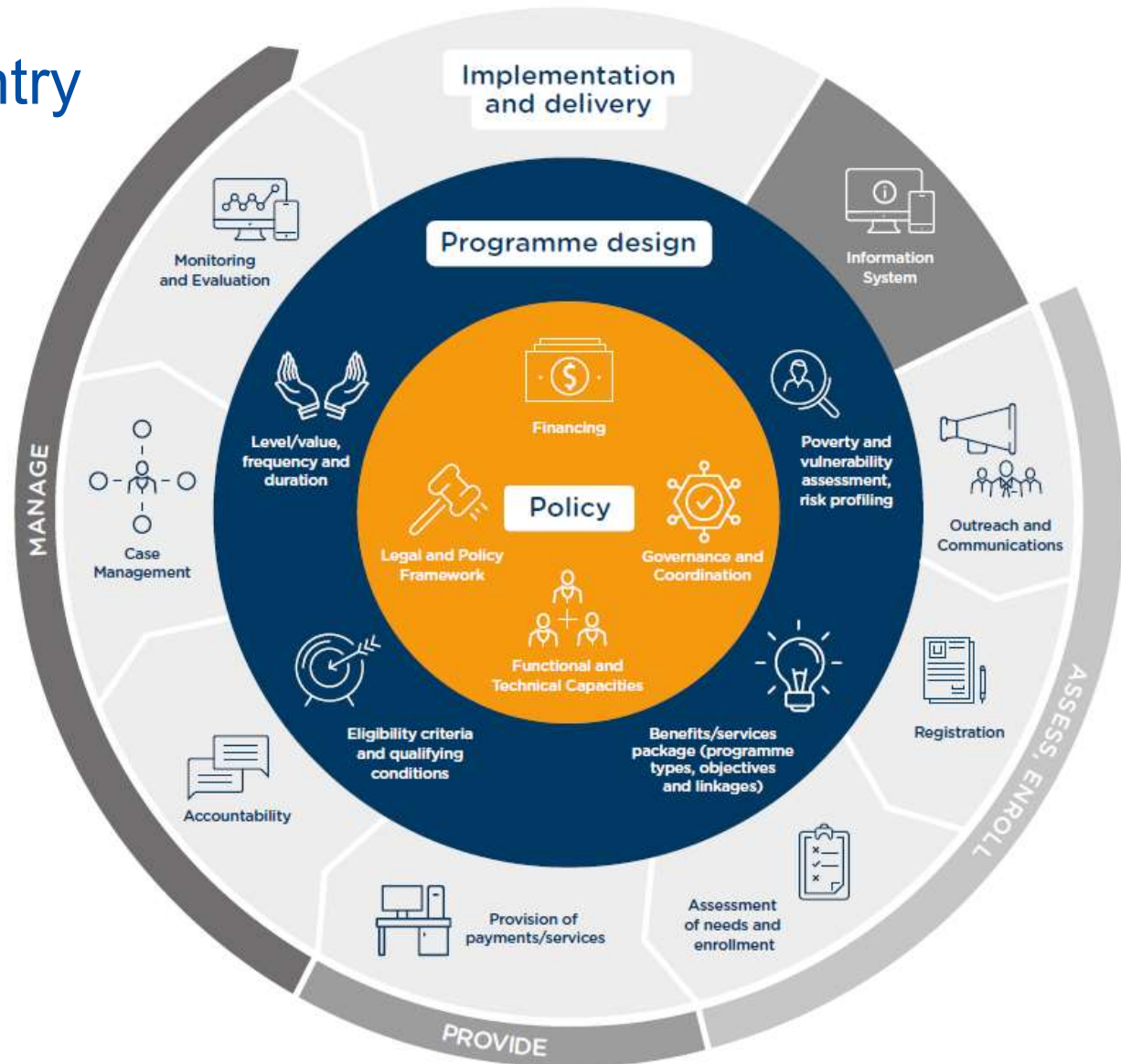
SP = an umbrella sector -> multiple entry points for H-D linkages

Multi-sectoral: concerns all sectors of humanitarian assistance



Multiple levels and entry points for linkages

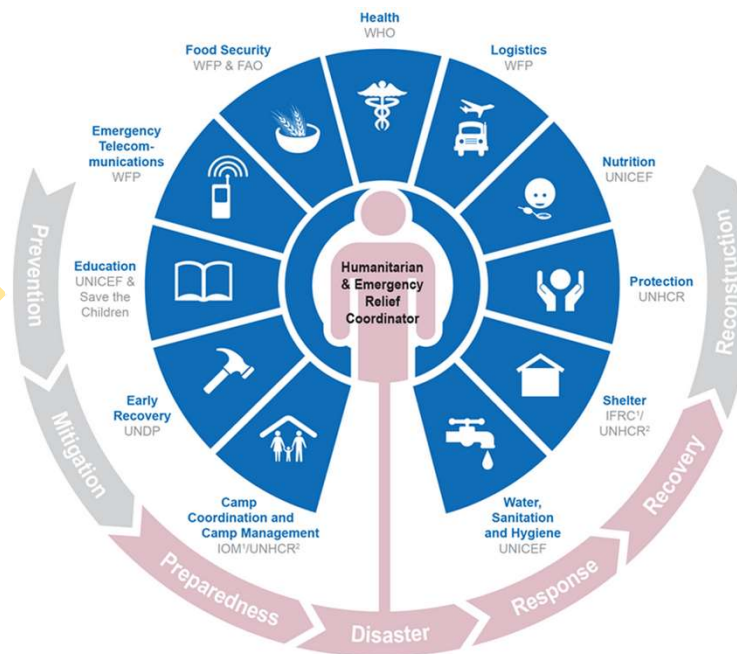
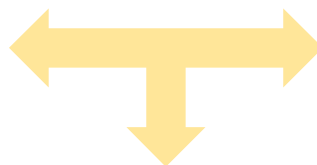
(systems perspective)



Coordination

Nouvelle configuration des Groupes Thématiques et des Groupes de Dialogue

LES 4 GT CREDD (Décret n°0623-PM-RM)	GT : Croissance économique Inclusive et durable	GT : Développement du capital humain et inclusion on sociale	GT : Développement Institutionnelle, Gouvernance et État de droit		GT : Protection de l'environnement
NOUVEAUX GT PTF	GT PTF 1 : Economie Inclusive et Durable	GT PTF 2 : Développement du capital humain et Inclusion sociale	GT PTF 3 : Développement Institutionnel et Gouvernance	GT PTF 4 : Paix et Sécurité	GT PTF 5 : Protection de l'Environnement et Résilience
GROUPES DE DIALOGUE	<ul style="list-style-type: none"> Autonomisation des femmes Développement secteur privé économie Agricole et Rural/Élevage/Pêche Leconomie et Finances/Statistiques Énergie et Transport Urbanisation 	<ul style="list-style-type: none"> Commission Réhabilitation Zones Post-conflits Lou et Assainissement Éducation et formation professionnelle PSSAM (protection sociale, sécurité alimentaire et nutrition) Santé 	<ul style="list-style-type: none"> Décentralisation et développement institutionnel Flicions Justice et État de droit Lutte Contre la Corruption Processus Démocratique et Organisation de la Société Civile 	Sécurité intérieure	Environnement et Changements Climatiques
LIEN GT- ODD	ODD 7, 8, 9	ODD 1, 2, 3, 4, 6, 7, 10, 11, 17	ODD 16, 17	ODD 5, 6, 14, 15, 17	ODD 7, 8, 9
RELEVANT CLUSTERS HUMANITAIRES		Antor , Scout and Red Cross in Mali , UNICEF , UNHCR , IOM , WFP , FAO , WHO , IFRC/ UNHCR , UNEP , UNEP/WHO/UNHCR , UNEP/WHO/UNHCR/FAO , WHO/FAO/UNHCR/WHO , WHO/FAO/UNHCR/WHO			



+ Cash working group

Initial scoping/ assessments

!! to invest !!

security context evol°	Type of shock/crisis					Political context/ gov't positioning			Dev' donor funding/ positioning in hum'n crises	
stable, deteriorating, improving	complex (with conflict, protection risks and IDPs)	recurrent droughts (food and nutrition insecurity) with IDPs	(protracted) refugee-hosting	major economic turnaround	recurrent sudden-onset shocks (floods, cyclons, epidemics, etc.)	gov't as part of the conflict, risk of interference/ instrumentalisation of HA? techn dep'ts compromised? vs. political willingness, -> room for engagement? how?	LICs/ MICs, strong/ failed state; presence of techn services at local level? -> focus on nexus with dev' donors, gov't/ local authorities, and/ or local non-state actors?	Weak/ strong role of gov't in coordination architecture,	Hum'n presence, funding & coordination -> how to strengthen hum'n voice on nat'-level?	DEV presence, funding & coordination -> potential for sharing responsibility with them?