

Total Arrivals from Ethiopia

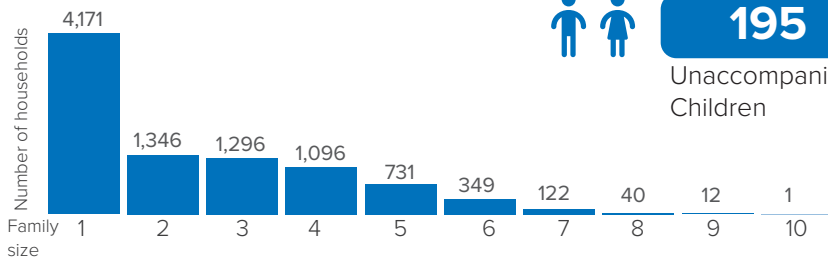

22,168

 Individuals Registered
 Source: UNHCR, COR
 As of 28 February 2023

9,164

Households Registered

Family Size



Introduction:

In response to the influx of Ethiopian refugees into eastern Sudan, UNHCR and the Government of Sudan, in collaboration with other partners, opened Tunaydbah refugee camp in Gedaref State on 3 January 2021 to accommodate the refugees relocated from the transit centres at the border to this site. The majority of the refugees in Tunaydbah camp are from the Tigray region of Ethiopia. As of end January 2023, the camp accommodates 21,883 refugees, all of whom are biometrically registered and provided with assistance. The dashboard below presents the population profile for Tunaydbah camp.

Persons With Specific Needs


2,414

Individuals


195

Unaccompanied/Separated Children

Country of Origin

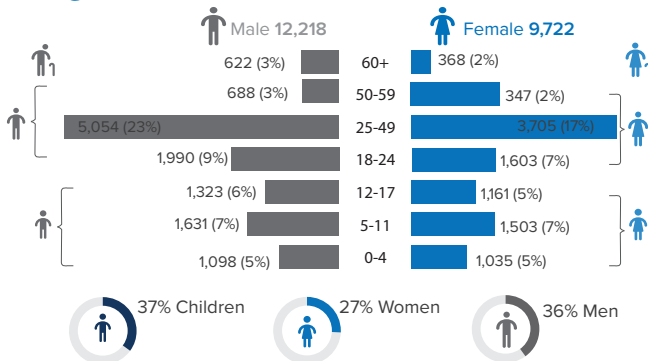
22,162

Ethiopians

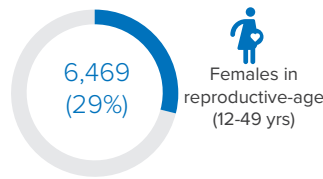
6

Eritreans

Age-Gender Breakdown

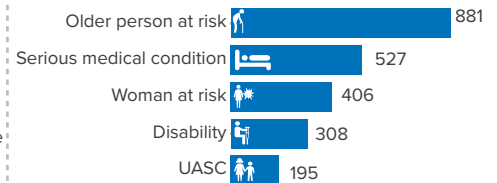


Reproductive- Age Women/Girls

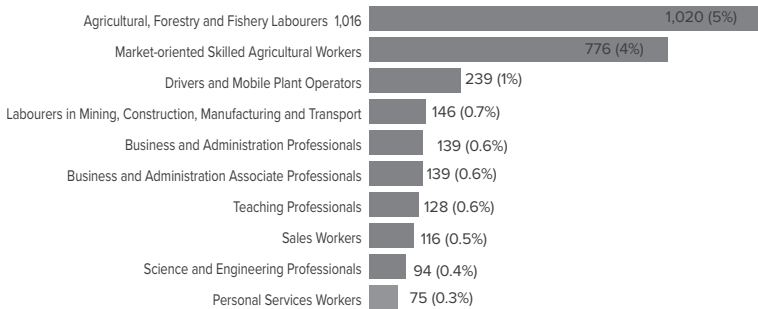


Percentages related to total population

Specific Needs (top 5)

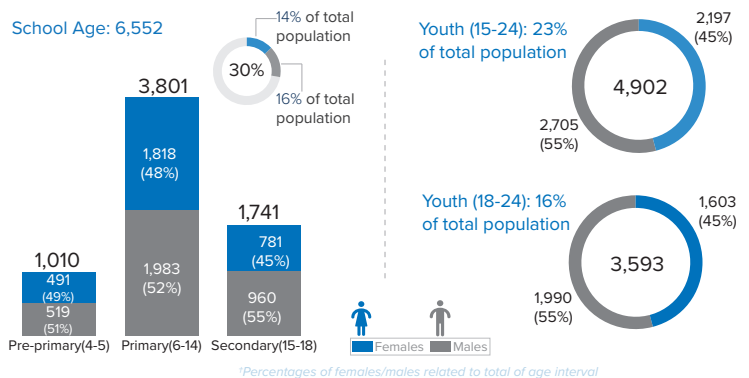

 Source: ProGres v4/Rapp
 *UASC: Unaccompanied or separated child

Occupation (Top 10)

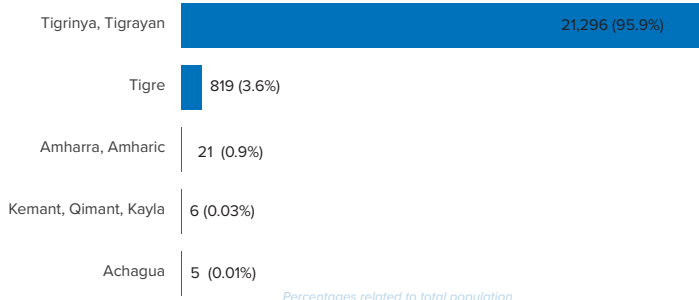


*Occupation and skills of population aged 18 and above Percentages related to total population

School Age Children and Youth



Ethnicity (Top 5)



Top 5 Areas of Origin (Ethiopia Admin 3)

