

## Total Arrivals from Ethiopia



**3,094**

Individuals Registered  
Source: UNHCR, COR  
As of 30 April 2023



**1,675**

Households

## Introduction:

In response to the influx of Ethiopian refugees into eastern Sudan, UNHCR and the Government of Sudan, in collaboration with other partners, opened Babikri settlement in Gedaref State on 28 November 2021 to accommodate the refugees relocated from the transit centres at the border to this site. The majority of the refugees in Babikri settlement belong to Qemant ethnic group. As of end March 2023, the settlement accommodates 3,093 refugees, all of whom are biometrically registered and provided with assistance. The dashboard below presents the population profile for Babikri settlement.

## Persons With Specific Needs



**191**

Individuals



**78**

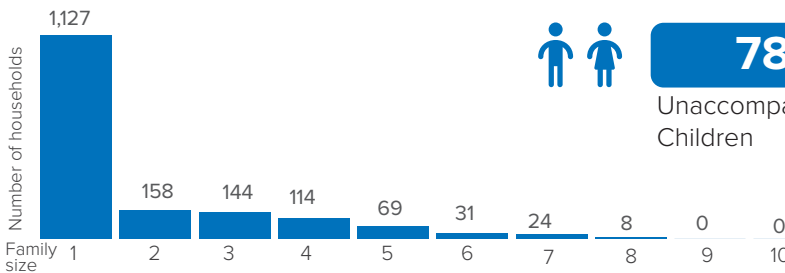
Unaccompanied/Separated Children

## Country of Origin

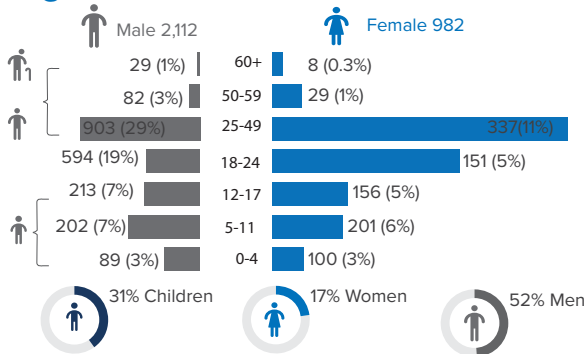
**3,094**

Ethiopians

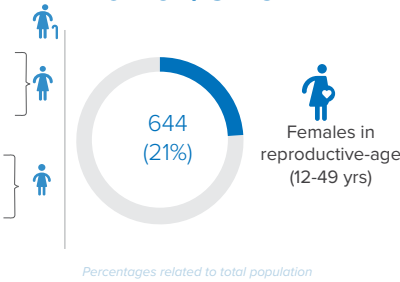
## Family Size



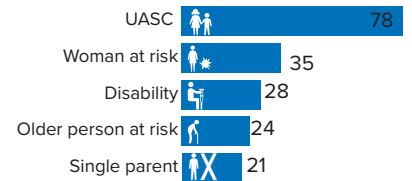
## Age-Gender Breakdown



## Reproductive-Age Women/Girls



## Specific Needs (top 5)



\*Unaccompanied or separated child  
Source: ProGres v4/Rapp

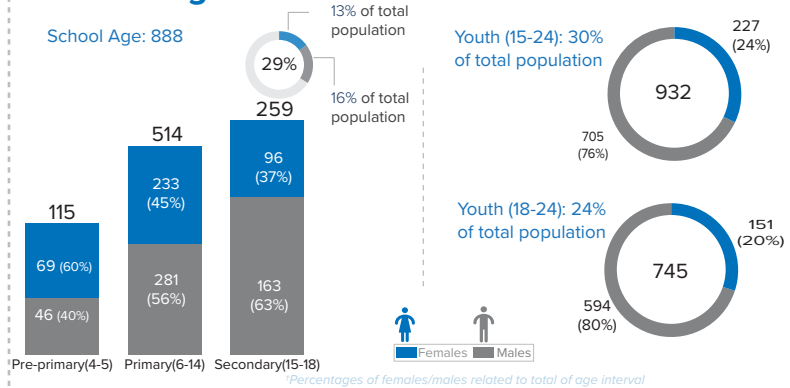
## Occupation



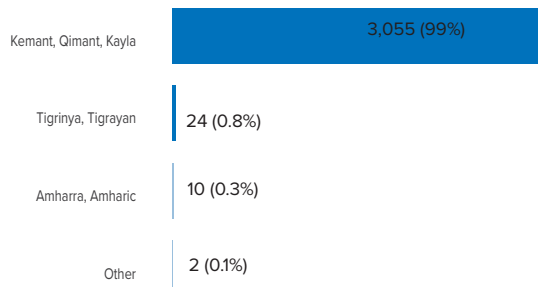
\*Occupation and skills of population aged 18 and above

Percentages related to total population

## School Age Children and Youth

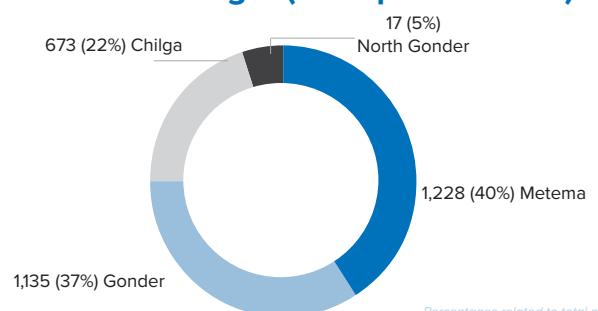


## Ethnicity (Top 4)



Percentages related to total population

## Top 4 Areas of Origin (Ethiopia Admin 3)



Percentages related to total population

