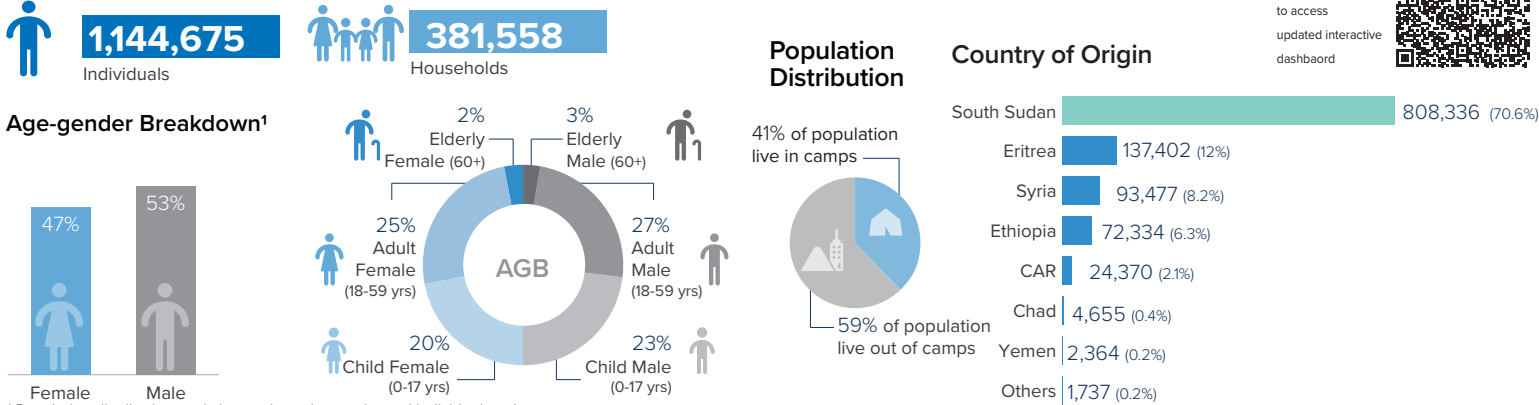


**Introduction:**

Sudan continues hosting many refugees and asylum seekers, with **1,144,675** individuals reported at the end of March 2023, including **47%** female, **48%** children and **6%** elderly refugees.

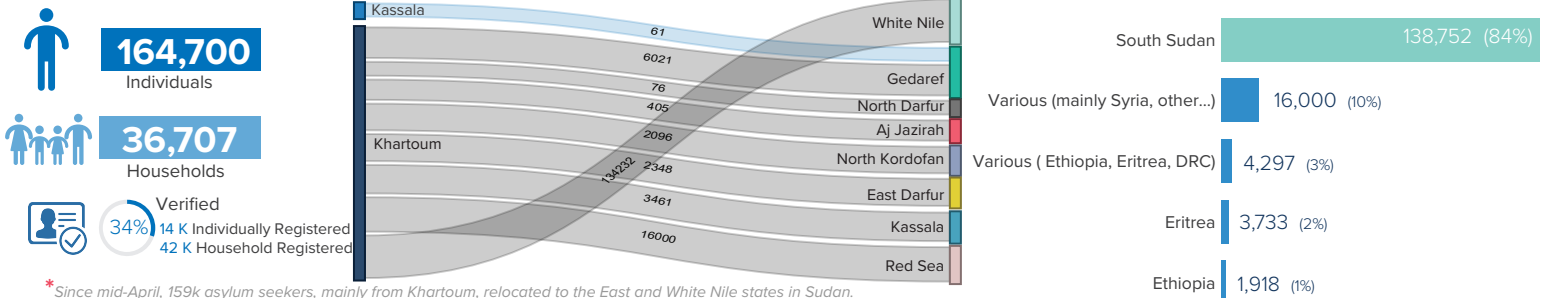
Since armed clashes erupted in Sudan in mid-April, civilians are moving to safer places. Those forced movements are observed within Sudan towards White Nile, East and Port Sudan states (away from Khartoum and the Darfur's) and out of the country into the neighboring countries. The internal as well as the outflow will concern Sudanese, documented and non-documented asylum seekers and refugees, third country nationals, stateless persons, escalating further the numbers of IDP, refugees within and out of Sudan.

**REFUGEES AND ASYLUM SEEKERS DISTRIBUTION ( AS OF 31 MARCH 2023,PRE-CRISIS ):**



<sup>1</sup> Population distribution statistics are based on registered individuals only.

**ESTIMATED REFUGEES AND ASYLUM SEEKERS INTERNAL MOVEMENT (POST 15 APRIL 2023) \*:**



Sources: UNHCR, Commission of Refugees (CoR)

