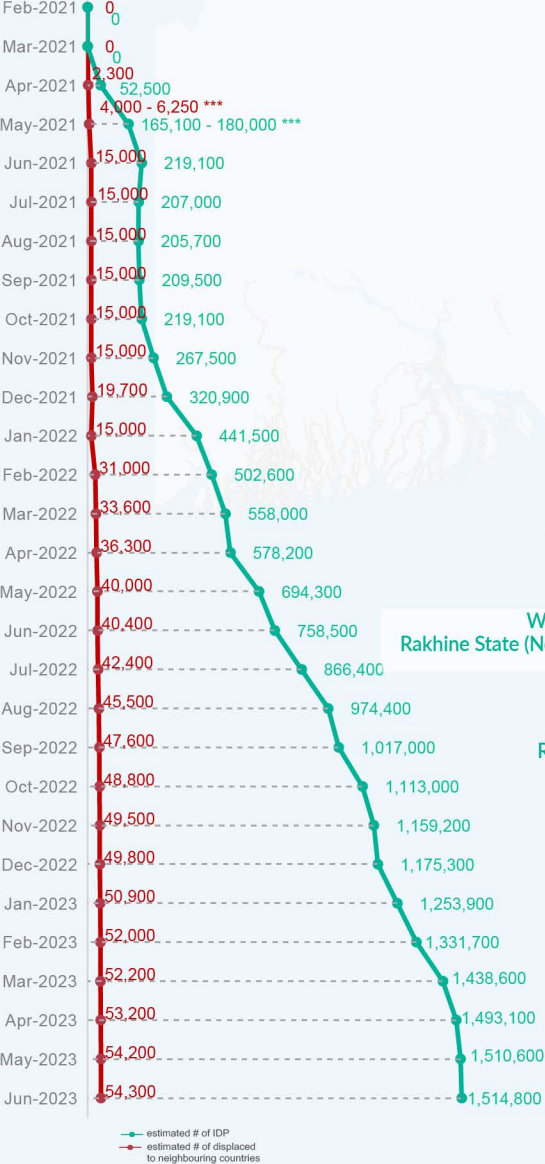


Key figures

Estimated # of IDPs  **1,514,800**
 Estimated # of displaced to neighbouring countries  **54,300**

Source : UN in Myanmar

Estimated displacement figures by Month




*60,300 persons are displaced by armed conflict in neighbouring Kayah State while 6,900 persons are displaced by inter-EAO conflict between SSPP and RCSS.


**UN Estimates

*** Range of figures was used while data collection was in progress.

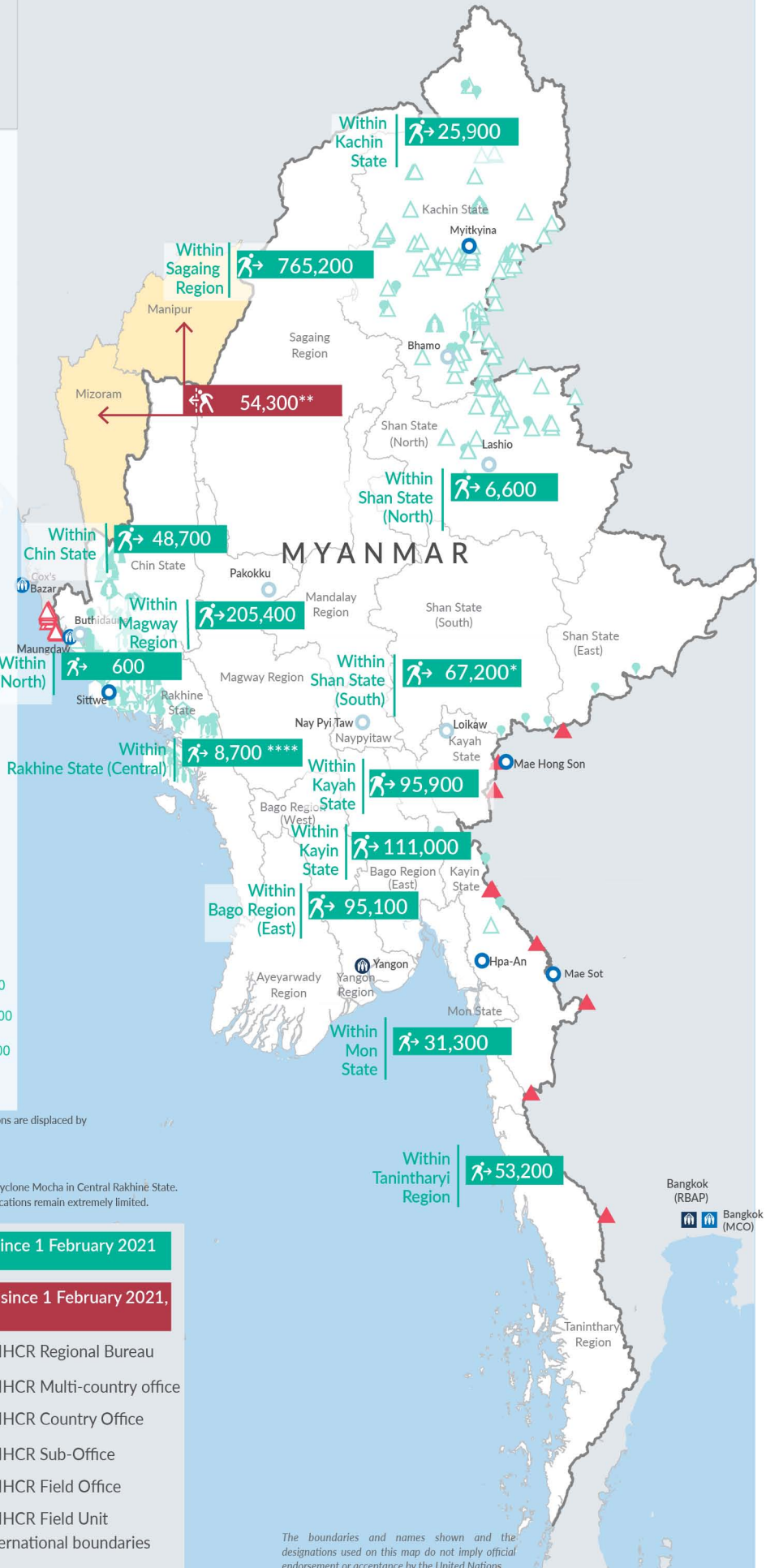
**** Regular data collection for the reporting period is disrupted by the immediate impacts of Cyclone Mocha in Central Rakhine State. Partners are assessing the displacement situation following the cyclone, however telecommunications remain extremely limited.

Figures will be updated once regular data collection activities resume.

 **Estimated internal displacement within Myanmar since 1 February 2021**
(rounded to the nearest hundred)

 **Estimated displacement to neighbouring countries since 1 February 2021, who remain displaced**
(rounded to the nearest hundred)

-  IDP unplanned settlement (pre-1 Feb 2021)
-  IDP Center (pre-1 Feb 2021)
-  IDP spontaneous location (pre-1 Feb 2021)
-  IDP planned settlement (pre-1 Feb 2021)
-  Temporary shelter for displaced people from Myanmar
-  Refugee, planned settlement
-  States/Provinces with new arrivals
-  UNHCR Regional Bureau
-  UNHCR Multi-country office
-  UNHCR Country Office
-  UNHCR Sub-Office
-  UNHCR Field Office
-  UNHCR Field Unit
-  International boundaries



The boundaries and names shown and the designations used on this map do not imply official endorsement or acceptance by the United Nations

Key figures


1,842,800

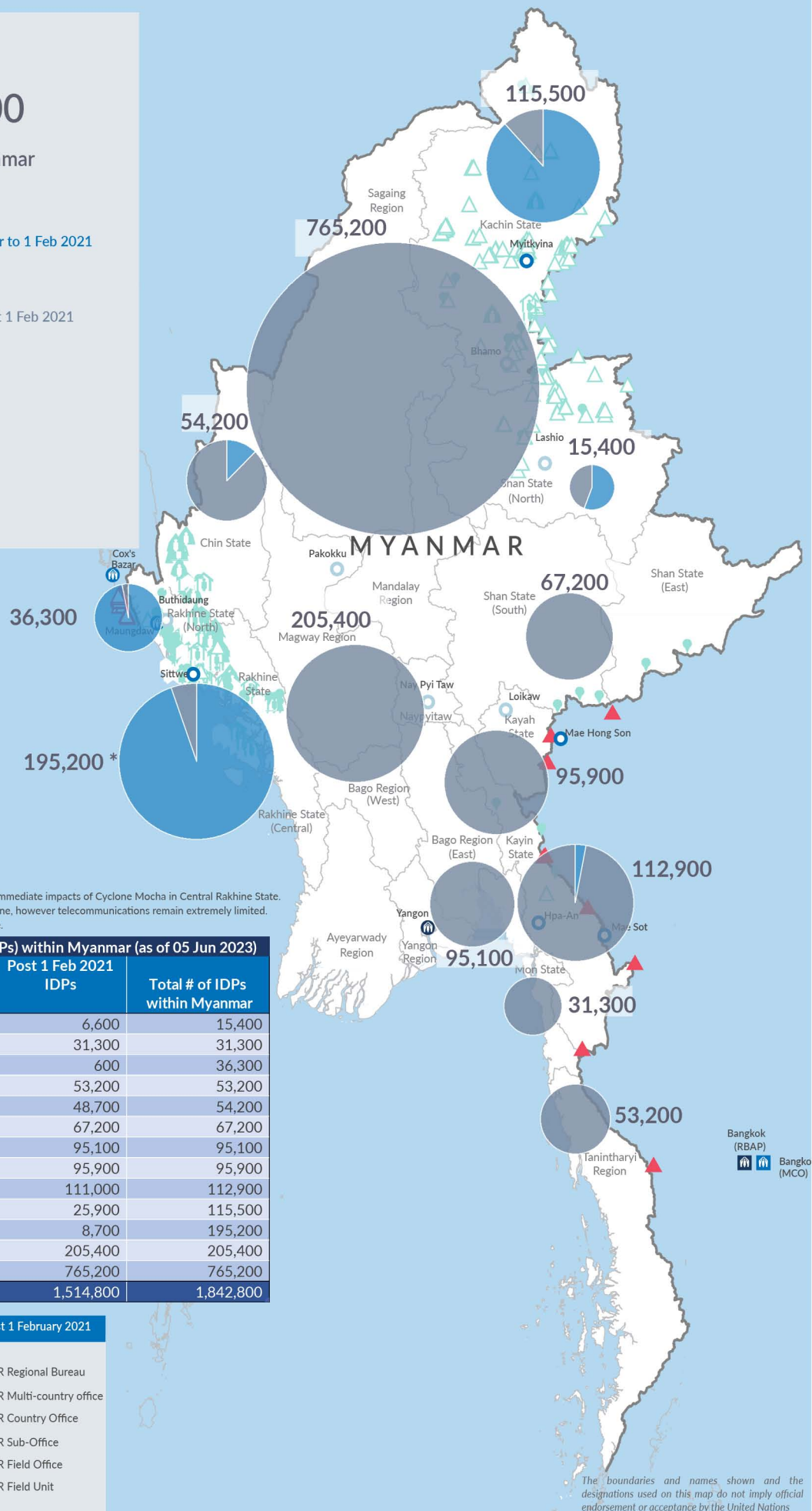
Estimated total IDPs within Myanmar


328,000
 Estimated # of IDPs displaced prior to 1 Feb 2021
 (As of 31 Dec, 2022)


1,514,800
 Estimated # of IDPs displaced post 1 Feb 2021
 (As of 05 Jun, 2023)


 Prior to 1 Feb 2021
 Post 1 Feb 2021

Source : UN in Myanmar



*Regular data collection for the reporting period is disrupted by the immediate impacts of Cyclone Mocha in Central Rakhine State. Partners are assessing the displacement situation following the cyclone, however telecommunications remain extremely limited. Figures will be updated once regular data collection activities resume.

State/Region	Prior to 1 Feb 2021 IDPs	Post 1 Feb 2021 IDPs	Total # of IDPs within Myanmar
Shan State (North)	8,800	6,600	15,400
Mon State	-	31,300	31,300
Rakhine State (North)	35,700	600	36,300
Tanintharyi Region	-	53,200	53,200
Chin State	5,500	48,700	54,200
Shan State (South)	-	67,200	67,200
Bago Region (East)	-	95,100	95,100
Kayah State	-	95,900	95,900
Kayin State	1,900	111,000	112,900
Kachin State	89,600	25,900	115,500
Rakhine State (Central)*	186,500	8,700	195,200*
Magway Region	-	205,400	205,400
Sagaing Region	-	765,200	765,200
Grand Total	328,000	1,514,800	1,842,800

 Estimated internal displacement within Myanmar Pre+Post 1 February 2021 (rounded to the nearest hundred)

-  IDP unplanned settlement (pre-1 Feb 2021)
-  IDP Center (pre-1 Feb 2021)
-  IDP spontaneous location (pre-1 Feb 2021)
-  IDP planned settlement (pre-1 Feb 2021)
-  Temporary shelter for displaced people from Myanmar
-  Refugee, planned settlement
-  International boundaries
-  UNHCR Regional Bureau
-  UNHCR Multi-country office
-  UNHCR Country Office
-  UNHCR Sub-Office
-  UNHCR Field Office
-  UNHCR Field Unit

The boundaries and names shown on this map do not imply official endorsement or acceptance by the United Nations