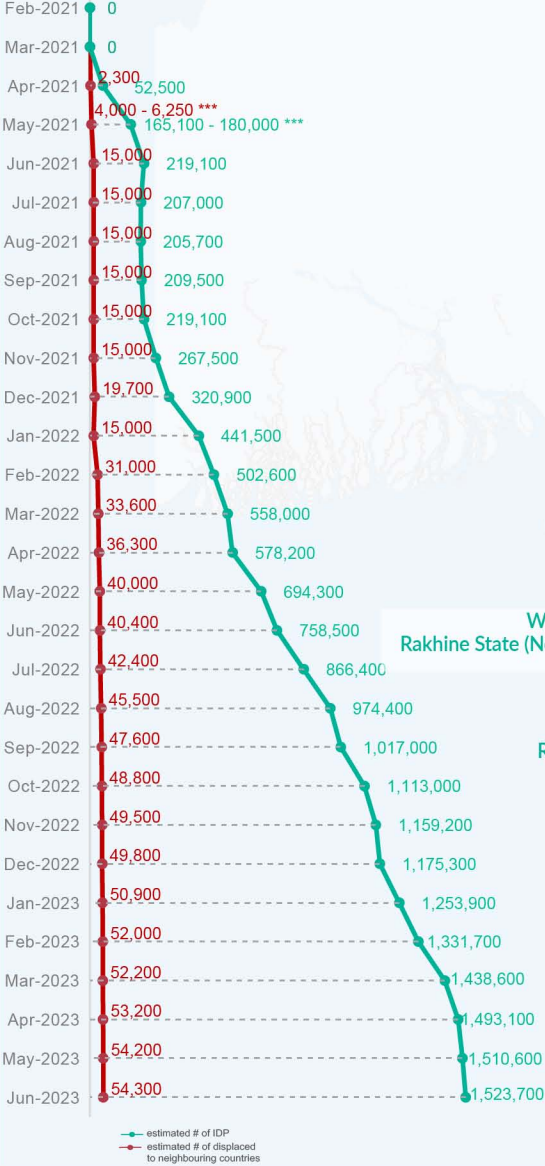


Key figures

Estimated # of IDPs → 1,523,700
 Estimated # of displaced to neighbouring countries → 54,300

Source : UN in Myanmar

Estimated displacement figures by Month



*62,500 persons are displaced by armed conflict in neighbouring Kayah State while 6,900 persons are displaced by inter-EAO conflict between SSPP and RCSS.

**UN Estimates

*** Range of figures was used while data collection was in progress.

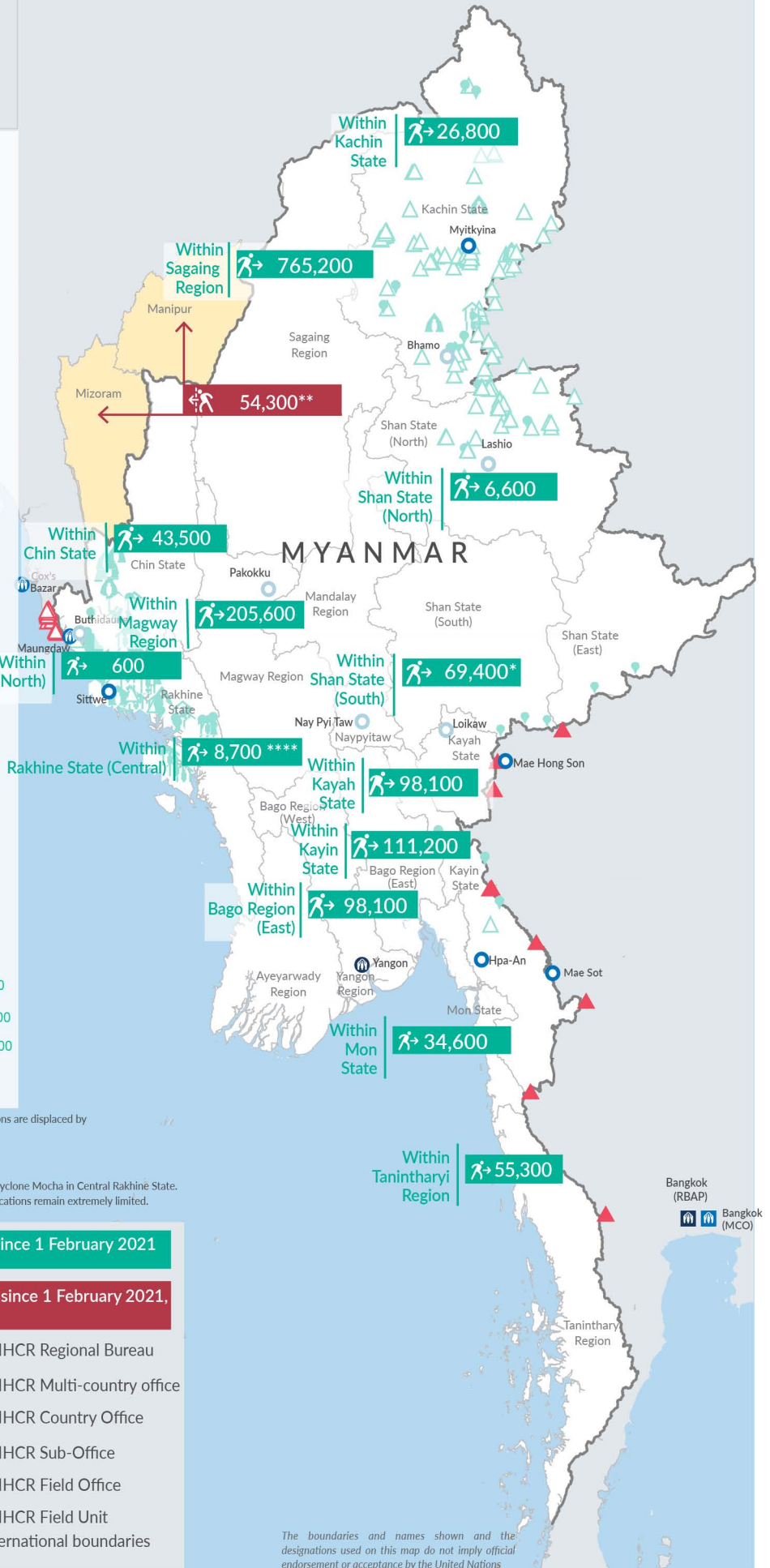
**** Regular data collection for the reporting period is disrupted by the immediate impacts of Cyclone Mocha in Central Rakhine State. Partners are assessing the displacement situation following the cyclone, however telecommunications remain extremely limited.

Figures will be updated once regular data collection activities resume.

Estimated internal displacement within Myanmar since 1 February 2021 (rounded to the nearest hundred)

Estimated displacement to neighbouring countries since 1 February 2021, who remain displaced (rounded to the nearest hundred)

- IDP unplanned settlement (pre-1 Feb 2021)
- IDP Center (pre-1 Feb 2021)
- IDP spontaneous location (pre-1 Feb 2021)
- IDP planned settlement (pre-1 Feb 2021)
- Temporary shelter for displaced people from Myanmar
- Refugee, planned settlement
- States/Provinces with new arrivals
- UNHCR Regional Bureau
- UNHCR Multi-country office
- UNHCR Country Office
- UNHCR Sub-Office
- UNHCR Field Office
- UNHCR Field Unit
- International boundaries



The boundaries and names shown and the designations used on this map do not imply official endorsement or acceptance by the United Nations

Key figures


1,851,700

Estimated total IDPs within Myanmar

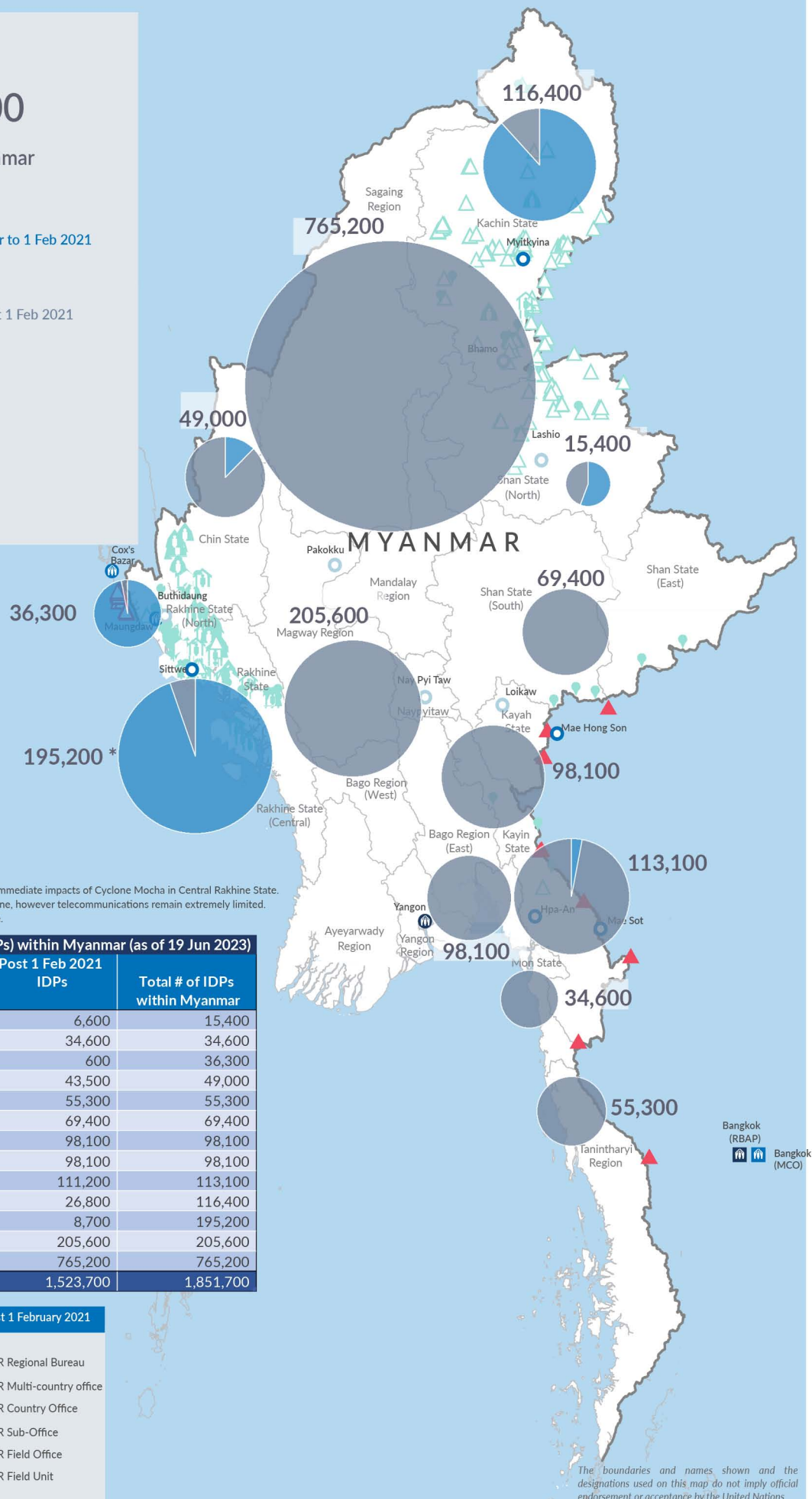

328,000
 Estimated # of IDPs displaced prior to 1 Feb 2021
 (As of 31 Dec, 2022)


1,523,700
 Estimated # of IDPs displaced post 1 Feb 2021
 (As of 19 Jun, 2023)


 Prior to 1 Feb 2021


 Post 1 Feb 2021

Source : UN in Myanmar



*Regular data collection for the reporting period is disrupted by the immediate impacts of Cyclone Mocha in Central Rakhine State. Partners are assessing the displacement situation following the cyclone, however telecommunications remain extremely limited. Figures will be updated once regular data collection activities resume.

Estimated total internally displaced person (IDPs) within Myanmar (as of 19 Jun 2023)

State/Region	Prior to 1 Feb 2021 IDPs	Post 1 Feb 2021 IDPs	Total # of IDPs within Myanmar
Shan State (North)	8,800	6,600	15,400
Mon State	-	34,600	34,600
Rakhine State (North)	35,700	600	36,300
Chin State	5,500	43,500	49,000
Tanintharyi Region	-	55,300	55,300
Shan State (South)	-	69,400	69,400
Kayah State	-	98,100	98,100
Bago Region (East)	-	98,100	98,100
Kayin State	1,900	111,200	113,100
Kachin State	89,600	26,800	116,400
Rakhine State (Central) *	186,500	8,700	195,200
Magway Region	-	205,600	205,600
Sagaing Region	-	765,200	765,200
Grand Total	328,000	1,523,700	1,851,700

Estimated internal displacement within Myanmar Pre+Post 1 February 2021 (rounded to the nearest hundred)

-  IDP unplanned settlement (pre-1 Feb 2021)
-  IDP Center (pre-1 Feb 2021)
-  IDP spontaneous location (pre-1 Feb 2021)
-  IDP planned settlement (pre-1 Feb 2021)
-  Temporary shelter for displaced people from Myanmar
-  Refugee, planned settlement
-  International boundaries
-  UNHCR Regional Bureau
-  UNHCR Multi-country office
-  UNHCR Country Office
-  UNHCR Sub-Office
-  UNHCR Field Office
-  UNHCR Field Unit

The boundaries and names shown and the designations used on this map do not imply official endorsement or acceptance by the United Nations