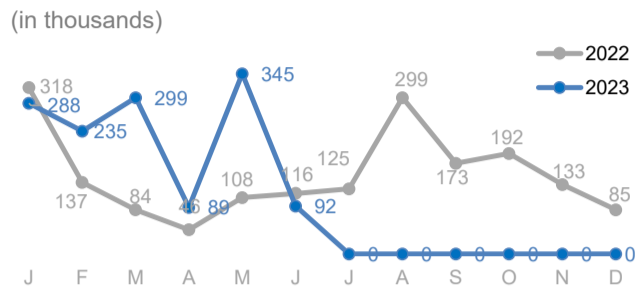


View the interactive dashboard here: <http://prmn-somalia.unhcr.org/>

**TOTAL DISPLACEMENTS**

**92,000** in June  
**1,349,000** (Jan - Jun 2023)  
**1,816,000** (Jan - Dec 2022)

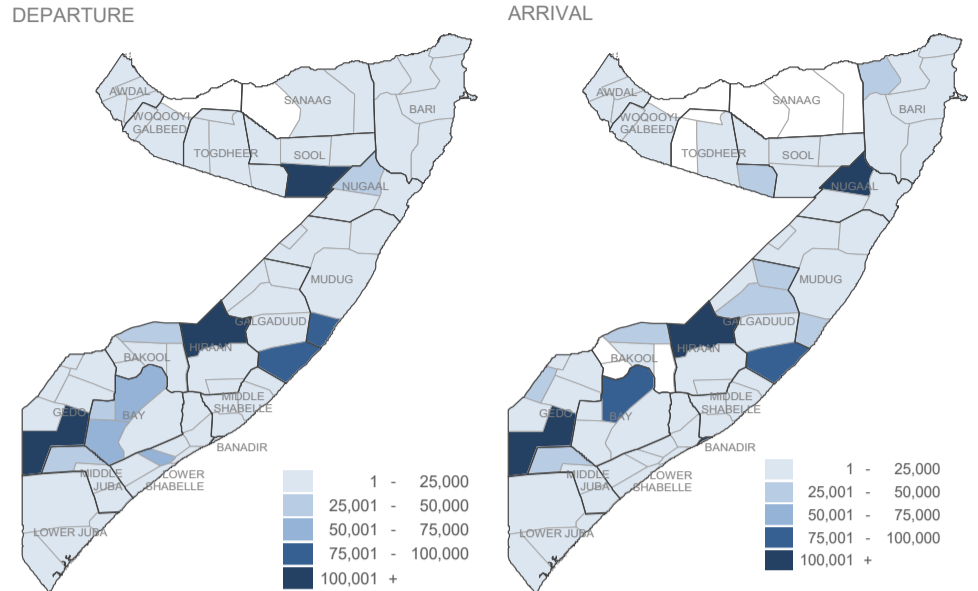
The UNHCR-led PRMN implemented in partnership with NRC reported 92,000 new internal displacements in the month of June 2023. Out of these, 57,000 were caused by conflict or insecurity, 28,000 were due to drought, 3,000 were related to floods and 4,000 were displaced due to other reasons



**BY REGION (Jan - Jun 2023)**

DEP	ARR
Hiraan	264,700   266,560
Lower Shabelle	117,650   34,710
Middle Shabelle	38,290   14,300
Gedo	172,480   203,570
Bay	146,970   107,350
Bari	20,180   73,480
Lower Juba	21,330   26,140
Galgaduud	105,270   158,620
Mudug	93,120   33,620
Bakool	54,980   46,210
Sanaag	3,230   2,430
Middle Juba	30,540   35,920
Banadir	2,040   115,930
Awdal	7,300   3,430
Togdheer	16,390   51,730
Sool	204,290   41,300
Nugaal	46,380   132,030
Woq. Galbeed	3,590   1,380

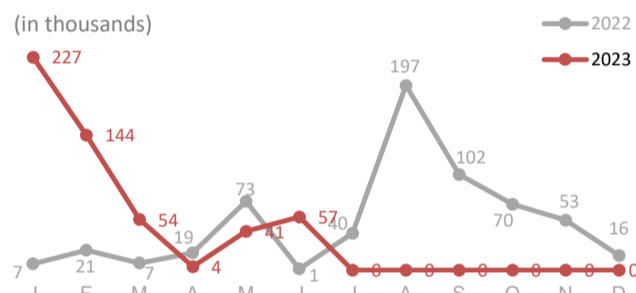
**BY DISTRICT (Jan - Jun 2023)**



**CONFLICT / INSECURITY DISPLACEMENTS**

**57,000** in June  
**531,000** (Jan - Jun 2023)  
**607,000** (Jan - Dec 2022)

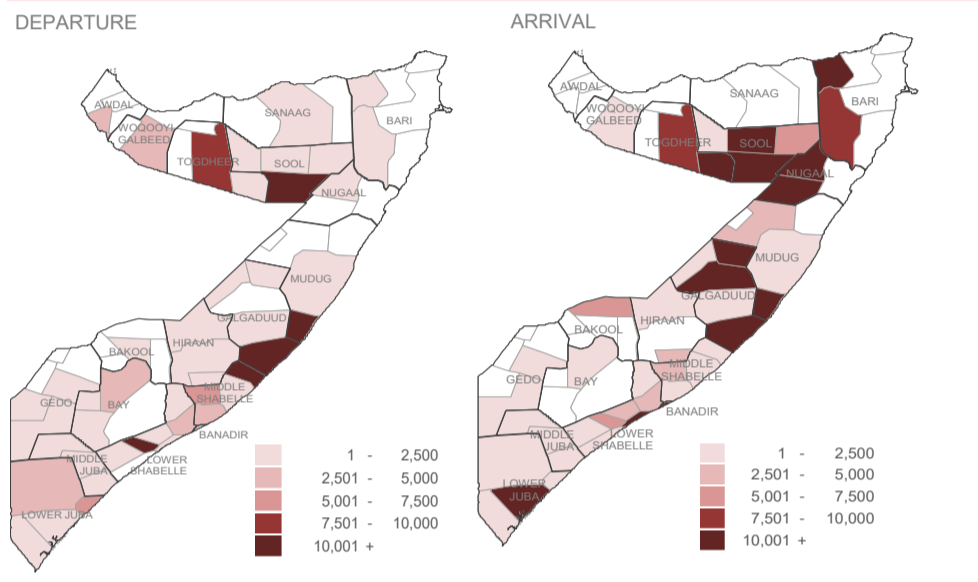
Major displacements in June occurred in Nugaal (37,558) and Lower Shabelle (8,588) regions particularly due to military offensive activities.



**BY REGION (Jan - Jun 2023)**

DEP	ARR
Lower Shabelle	43,960   26,170
Bay	3,910   1,080
Galgaduud	96,130   149,380
Gedo	610   2,310
Bakool	5,410   5,400
Lower Juba	11,630   13,030
Sool	196,060   37,660
Sanaag	30   1,320
Middle Juba	4,770   1,470
Togdheer	10,940   46,980
Mudug	81,790   29,760
Banadir	280   44,740
Middle Shabelle	29,580   6,440
Hiraan	1,280   3,120
Bari	10   52,180
Nugaal	37,580   109,640
Awdal	3,860   0
Woq. Galbeed	3,530   690

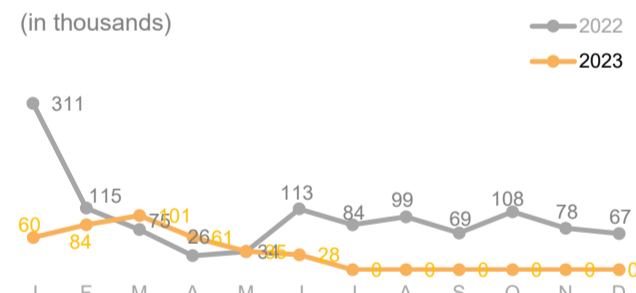
**BY DISTRICT (Jan - Jun 2023)**



**DROUGHT RELATED DISPLACEMENTS**

**28,000** in June  
**369,000** (Jan - Jun 2023)  
**1,179,000** (Jan - Dec 2022)

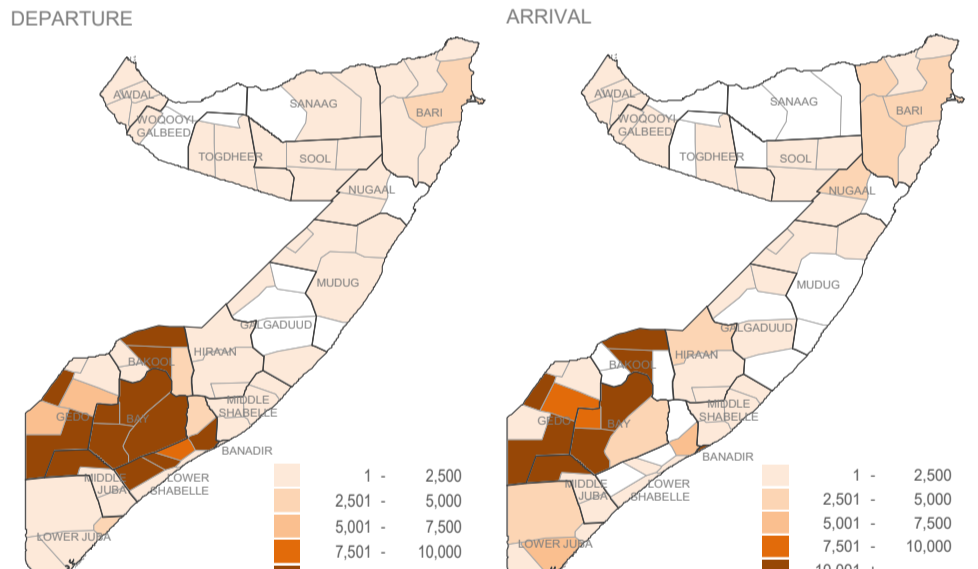
The highest displacements in June owing to drought were recorded in Bari (6,967), Middle Juba (4,575) Bay (4,277) and Gedo (2,843) regions.



**BY REGION (Jan - Jun 2023)**

DEP	ARR
Bay	118,440   82,560
Bari	13,750   16,170
Sanaag	2,660   990
Bakool	48,280   39,710
Awdal	2,280   2,280
Sool	3,850   520
Gedo	62,900   91,540
Lower Shabelle	72,770   7,620
Mudug	2,950   2,520
Togdheer	3,160   1,670
Hiraan	2,540   2,620
Nugaal	190   4,360
Lower Juba	8,410   11,690
Woq. Galbeed	30   660
Middle Juba	22,140   30,770
Banadir	100   69,370
Middle Shabelle	3,770   3,050
Galgaduud	580   690

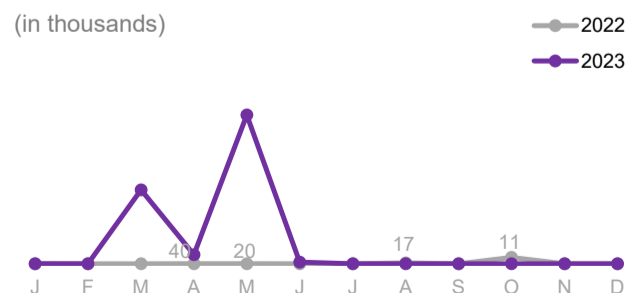
**BY DISTRICT (Jan - Jun 2023)**



**FLOOD DISPLACEMENTS**

**3,000** in June  
**417,900** (Jan - Jun 2023)  
**13,100** (Jan - Dec 2022)

The highest displacements in June owing to floods were recorded in Banadir (1,907) and Middle Shabelle (305) regions



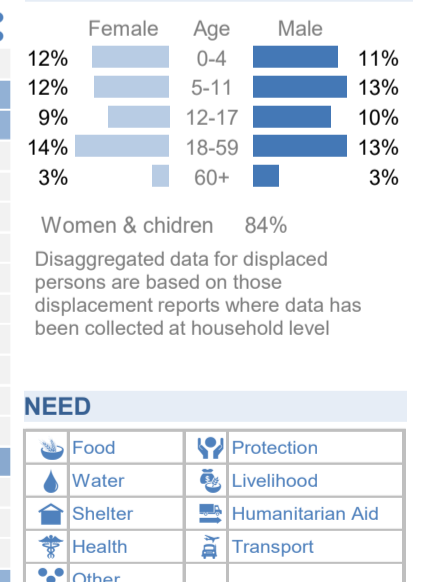
**BY REGION (Jan - Jun 2023)**

DEP	ARR
Hiraan	260,860   260,800
Lower Shabelle	310   310
Middle Shabelle	4,920   4,810
Gedo	100,450   100,860
Lower Juba	1,010   1,050
Bari	4,400   4,740
Mudug	1,310   1,310
Banadir	1,490   1,630
Middle Juba	3,230   2,780
Galgaduud	8,550   8,550
Bakool	10   10
Bay	22,340   22,340
Awdal	1,100   1,100
Sool	0   0
Woq. Galbeed	30   30
Sanaag	300   0
Togdheer	1,680   1,680
Nugaal	5,920   5,930

**PRIORITY NEED ON ARRIVAL (June 2023 in %)**

District	Food	Water	Shelter	Health	Protection	Transport	Other
Awdal	10	36		53			
Bakool	96					3	
Banadir	37	1	3	56		2	
Bari	51	39		9		1	
Bay	98		1			1	
Galgaduud	94	6					
Gedo	50	46		3			
Hiraan	1	98		1			
Lower Juba	84	11	1	2		1	
Lower Shabelle	12			80	6	1	
Middle Juba	98		1				
Middle Shabelle	89	3	2	5		1	
Mudug	86		4	1	8		
Nugaal	22	2	47	2	14		13
Sanaag	13	25		21	41		
Sool	26		73				
Togdheer	38		59	1	2		
Woq. Galbeed	40	13	2		42		1

**AGE & GENDER (2023)**



**About PRMN**

The PRMN (Protection & Return Monitoring Network) is a UNHCR-led project which identifies and reports on displacements (including returns) of populations in Somalia. The network also identifies and reports on protection risks and incidents underlying such movements. Only figures collected by PRMN are reported above. Not all displacements in Somalia are captured. This dashboard should be read in conjunction with the Notes on PRMN Methodology (<https://data2.unhcr.org/en/documents/details/53888>) which outline the approach and certain limitations. The figures shown are for numbers of individuals and are based on interviews with key informants and/or displaced households at destination (unless otherwise noted). Further information and datasets available on request use contact below.



UNHCR is grateful for the generous contributions of donors who have directly contributed to the UNHCR Somalia operation in 2023

