

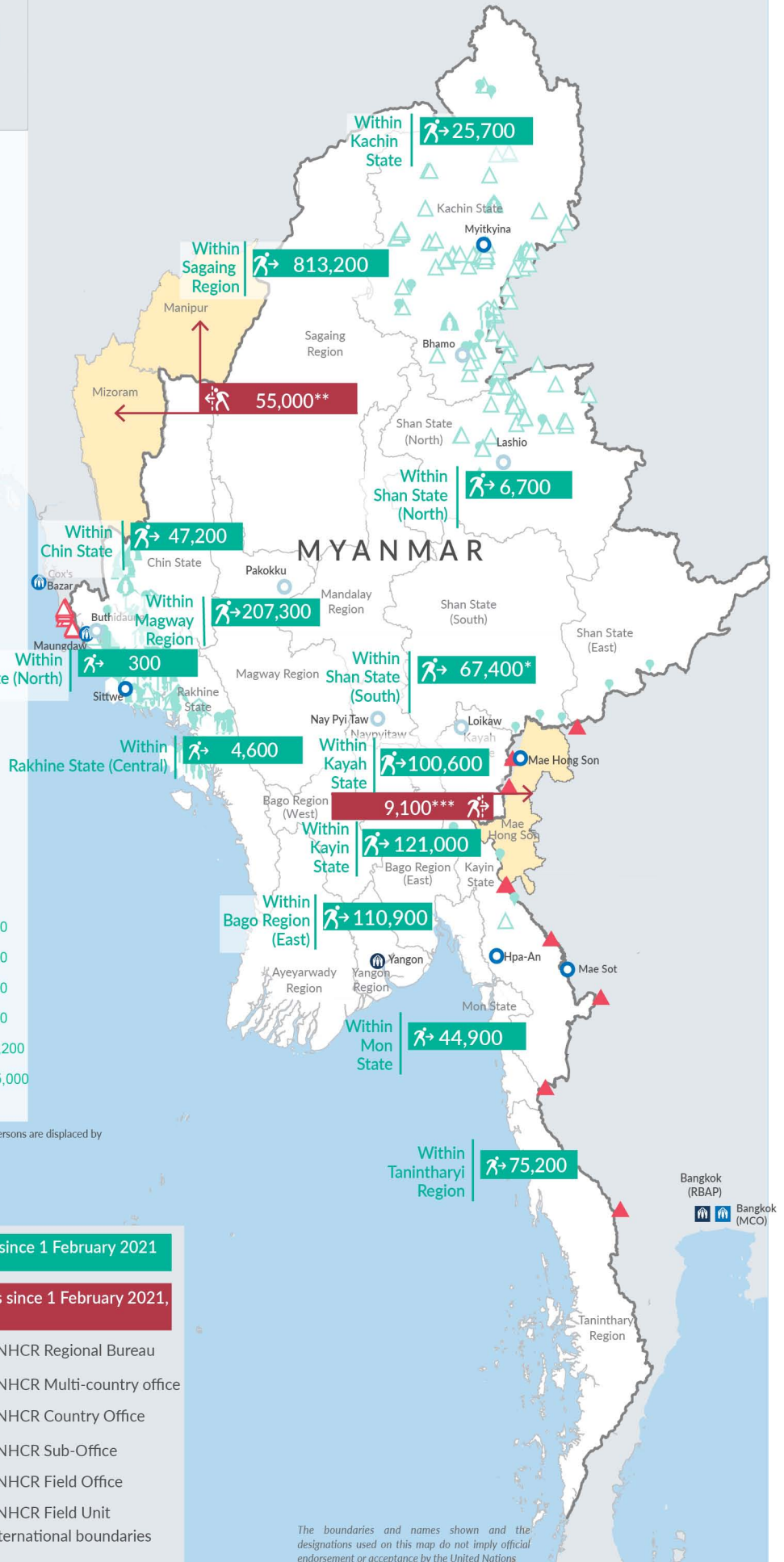
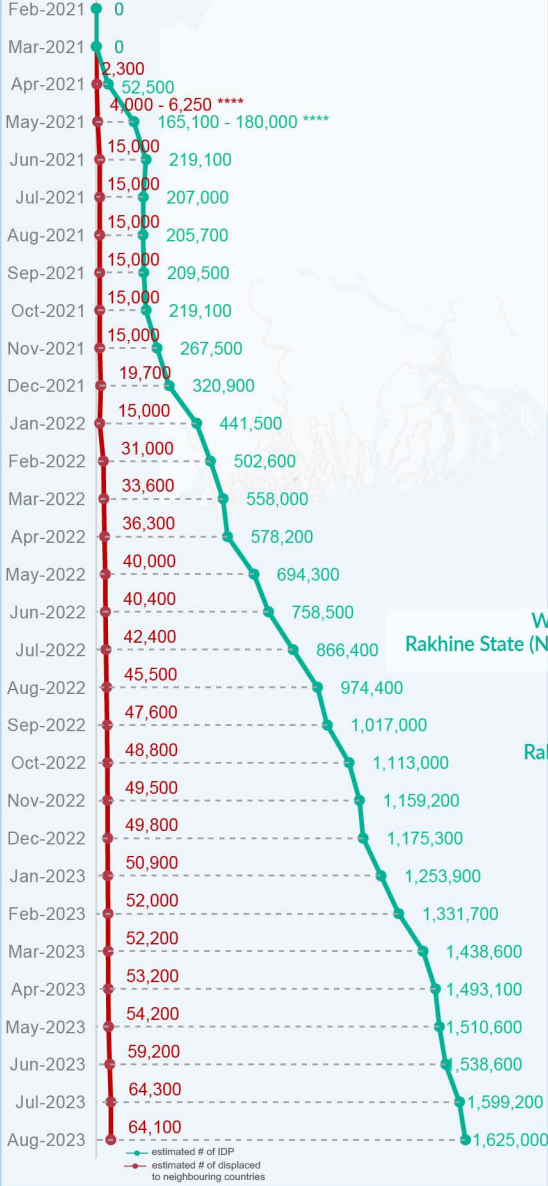
Key figures

Estimated # of IDPs → 1,625,000

Estimated # of displaced to neighbouring countries → 64,100

Source : UN in Myanmar

Estimated displacement figures by Month



*60,400 persons are displaced by armed conflict in neighbouring Kayah State while 7,000 persons are displaced by inter-EAO conflict between SSPP and RCSS.

**UN Estimates

***Estimates by Tak Border Command Center (TBCC)

****Range of figures was used while data collection was in progress.

Estimated internal displacement within Myanmar since 1 February 2021 (rounded to the nearest hundred)

Estimated displacement to neighbouring countries since 1 February 2021, who remain displaced (rounded to the nearest hundred)

- IDP unplanned settlement (pre-1 Feb 2021)
- IDP Center (pre-1 Feb 2021)
- IDP spontaneous location (pre-1 Feb 2021)
- IDP planned settlement (pre-1 Feb 2021)
- Temporary shelter for displaced people from Myanmar
- Refugee, planned settlement
- States/Provinces with new arrivals
- UNHCR Regional Bureau
- UNHCR Multi-country office
- UNHCR Country Office
- UNHCR Sub-Office
- UNHCR Field Office
- UNHCR Field Unit
- International boundaries

The boundaries and names shown and the designations used on this map do not imply official endorsement or acceptance by the United Nations

Key figures


1,931,200

Estimated total IDPs within Myanmar

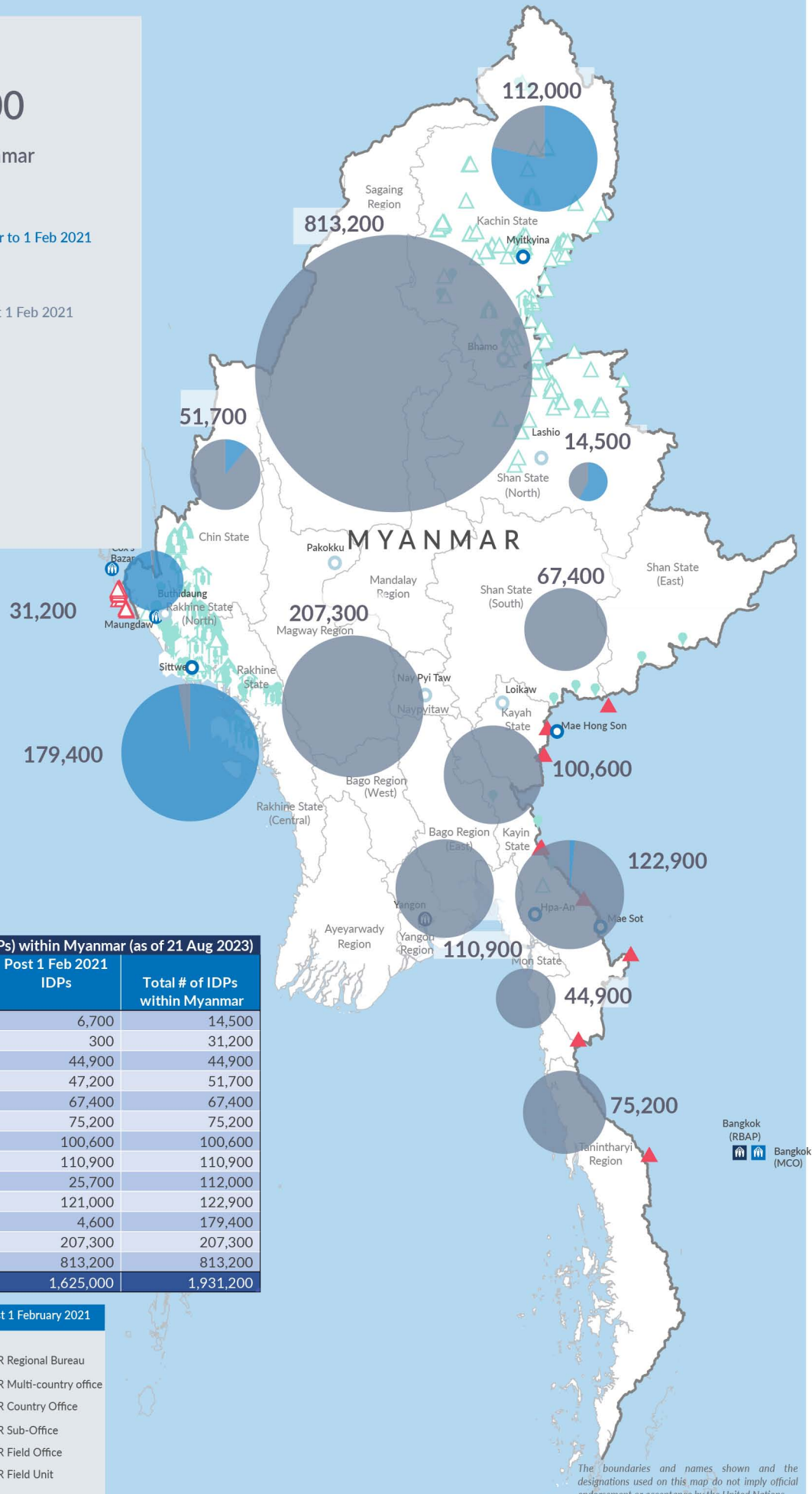

306,200
 Estimated # of IDPs displaced prior to 1 Feb 2021
(As of 30 Jun, 2023)

1,625,300
 Estimated # of IDPs displaced post 1 Feb 2021
(As of 21 Aug, 2023)

 Prior to 1 Feb 2021


 Post 1 Feb 2021

Source : UN in Myanmar


Estimated total internally displaced person (IDPs) within Myanmar (as of 21 Aug 2023)

State/Region	Prior to 1 Feb 2021 IDPs	Post 1 Feb 2021 IDPs	Total # of IDPs within Myanmar
Shan State (North)	7,800	6,700	14,500
Rakhine State (North)	30,900	300	31,200
Mon State	-	44,900	44,900
Chin State	4,500	47,200	51,700
Shan State (South)	-	67,400	67,400
Tanintharyi Region	-	75,200	75,200
Kayah State	-	100,600	100,600
Bago Region (East)	-	110,900	110,900
Kachin State	86,300	25,700	112,000
Kayin State	1,900	121,000	122,900
Rakhine State (Central)	174,800	4,600	179,400
Magway Region	-	207,300	207,300
Sagaing Region	-	813,200	813,200
Grand Total	306,200	1,625,000	1,931,200

Estimated internal displacement within Myanmar Pre+Post 1 February 2021 (rounded to the nearest hundred)

-  IDP unplanned settlement (pre-1 Feb 2021)
-  IDP Center (pre-1 Feb 2021)
-  IDP spontaneous location (pre-1 Feb 2021)
-  IDP planned settlement (pre-1 Feb 2021)
-  Temporary shelter for displaced people from Myanmar
-  Refugee, planned settlement
-  International boundaries
-  UNHCR Regional Bureau
-  UNHCR Multi-country office
-  UNHCR Country Office
-  UNHCR Sub-Office
-  UNHCR Field Office
-  UNHCR Field Unit

The boundaries and names shown on this map do not imply official endorsement or acceptance by the United Nations