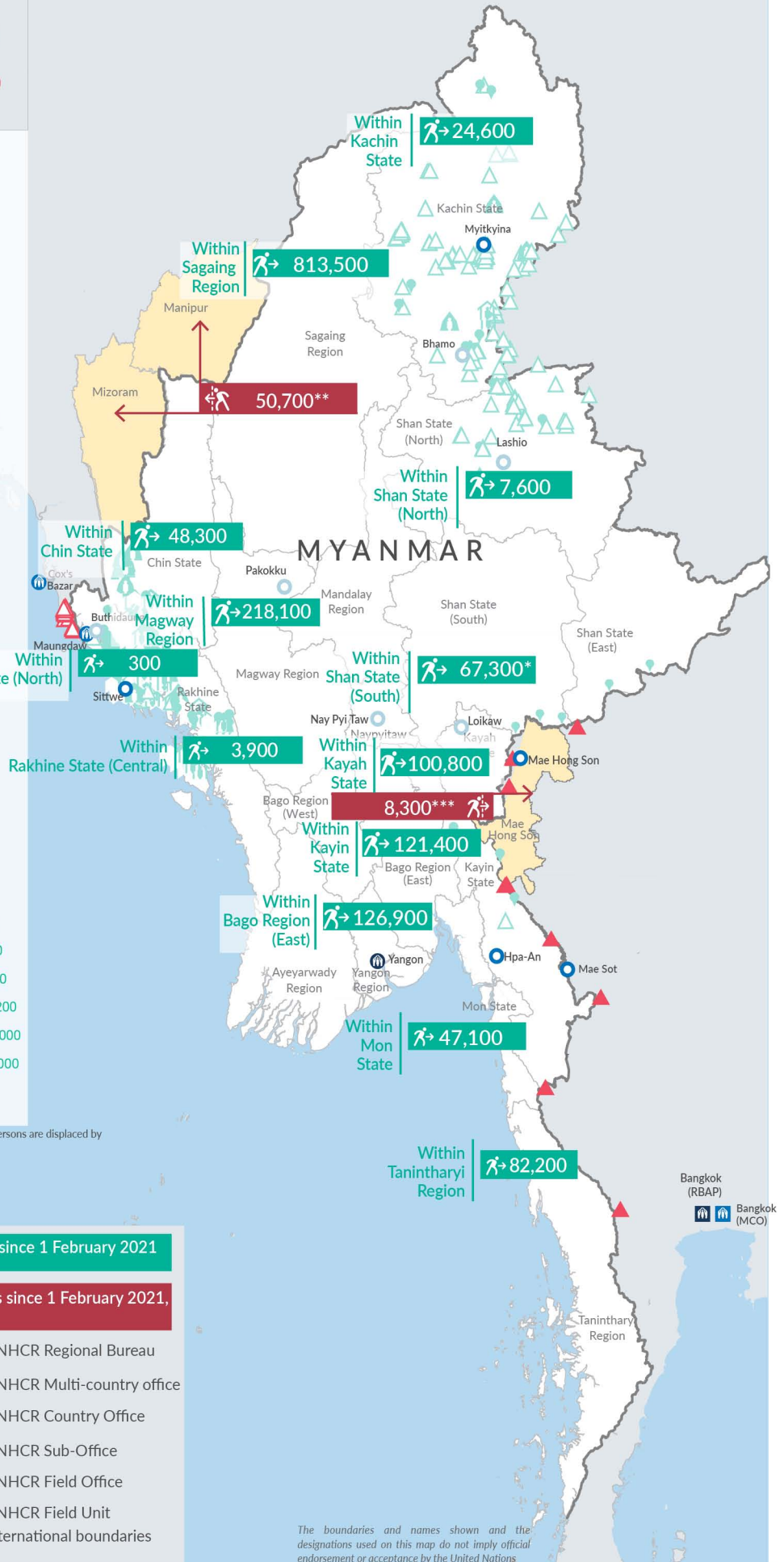
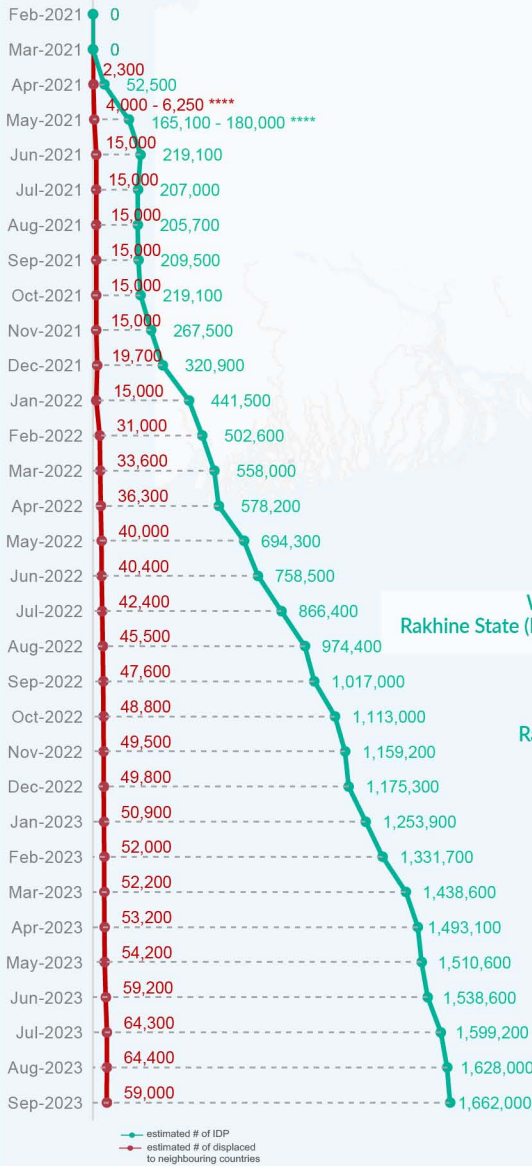


Key figures

Estimated # of IDPs → 1,662,000
 Estimated # of displaced to neighbouring countries → 59,000

Source : UN in Myanmar

Estimated displacement figures by Month



*60,300 persons are displaced by armed conflict in neighbouring Kayah State while 7,000 persons are displaced by inter-EAO conflict between SSPP and RCSS.

**UN Estimates

***Estimates by Tak Border Command Center (TBCC)

****Range of figures was used while data collection was in progress.

Estimated internal displacement within Myanmar since 1 February 2021 (rounded to the nearest hundred)

Estimated displacement to neighbouring countries since 1 February 2021, who remain displaced (rounded to the nearest hundred)

- IDP unplanned settlement (pre-1 Feb 2021)
- IDP Center (pre-1 Feb 2021)
- IDP spontaneous location (pre-1 Feb 2021)
- IDP planned settlement (pre-1 Feb 2021)
- Temporary shelter for displaced people from Myanmar
- Refugee, planned settlement
- States/Provinces with new arrivals
- UNHCR Regional Bureau
- UNHCR Multi-country office
- UNHCR Country Office
- UNHCR Sub-Office
- UNHCR Field Office
- UNHCR Field Unit
- International boundaries

The boundaries and names shown and the designations used on this map do not imply official endorsement or acceptance by the United Nations

Key figures

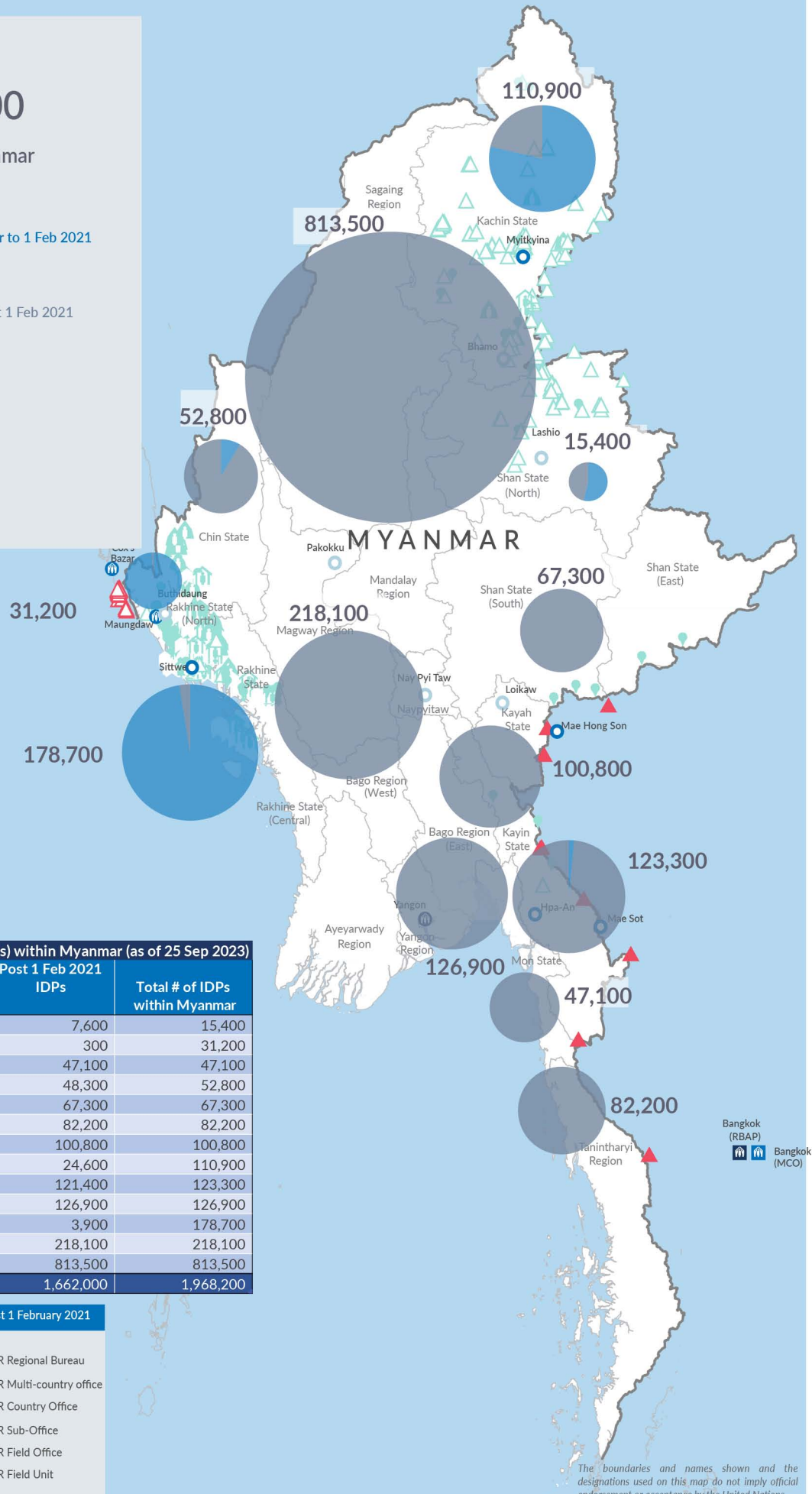

1,968,200

Estimated total IDPs within Myanmar


306,200
 Estimated # of IDPs displaced prior to 1 Feb 2021
(As of 30 Jun, 2023)

1,662,000
 Estimated # of IDPs displaced post 1 Feb 2021
(As of 25 Sep, 2023)
 Prior to 1 Feb 2021
 Post 1 Feb 2021

Source : UN in Myanmar


Estimated total internally displaced person (IDPs) within Myanmar (as of 25 Sep 2023)

State/Region	Prior to 1 Feb 2021 IDPs	Post 1 Feb 2021 IDPs	Total # of IDPs within Myanmar
Shan State (North)	7,800	7,600	15,400
Rakhine State (North)	30,900	300	31,200
Mon State	-	47,100	47,100
Chin State	4,500	48,300	52,800
Shan State (South)	-	67,300	67,300
Tanintharyi Region	-	82,200	82,200
Kayah State	-	100,800	100,800
Kachin State	86,300	24,600	110,900
Kayin State	1,900	121,400	123,300
Bago Region (East)	-	126,900	126,900
Rakhine State (Central)	174,800	3,900	178,700
Magway Region	-	218,100	218,100
Sagaing Region	-	813,500	813,500
Grand Total	306,200	1,662,000	1,968,200

Estimated internal displacement within Myanmar Pre+Post 1 February 2021
(rounded to the nearest hundred)

-  IDP unplanned settlement (pre-1 Feb 2021)
-  IDP Center (pre-1 Feb 2021)
-  IDP spontaneous location (pre-1 Feb 2021)
-  IDP planned settlement (pre-1 Feb 2021)
-  Temporary shelter for displaced people from Myanmar
-  Refugee, planned settlement
-  International boundaries
-  UNHCR Regional Bureau
-  UNHCR Multi-country office
-  UNHCR Country Office
-  UNHCR Sub-Office
-  UNHCR Field Office
-  UNHCR Field Unit

The boundaries and names shown and the designations used on this map do not imply official endorsement or acceptance by the United Nations