

## SUDAN SITUATION

31 October-06 November 2023



Rania, 35, and her three young children are among over 330,000 people who sought refuge in Egypt after fleeing the war in Sudan ©UNHCR/Jaime Gimenez.

### Highlights

The ongoing clashes between the Sudanese Armed Forces (SAF) and Rapid Support Forces (RSF) that started on 15 April 2023 have continued for 205 days as of 06 November.

In a [statement](#) to the UN Security Council, the UN High Commissioner for Refugees, Filippo Grandi, warned that Sudan is facing a dire humanitarian crisis with escalating conflict and atrocities. He bemoaned the insufficient attention and response from the international community.

Clementine Nkweta-Salami, Deputy Special Representative of the Secretary-General for Sudan, Officer-in-charge of UNITAMS, Resident Coordinator & Humanitarian Coordinator, urged all conflict parties in Sudan to adhere to their obligations under international law, safeguarding civilians. In her November 2 [statement](#), she also stressed the importance of ensuring safe access for humanitarian aid to the affected population in Sudan.

The Office of the High Commissioner for Human Rights (OHCHR) [expressed alarm](#) over reports that in Sudan, women and girls are being abducted, chained and held in “inhuman, degrading slave-like conditions” in areas controlled by the Rapid Support Forces (RSF) in Darfur.

The clashes in Darfur have led to more than 8,000 new arrivals into Chad over the past week, including some who have arrived wounded.

Mamadou Dian Balde, Director of UNHCR’s Regional Bureau for East and Horn of Africa and Great Lakes, and Coordinator of the Sudan Situation, cautioned that as global attention shifted to the Gaza conflict, the

displacement crisis in Sudan was resurging. He emphasized in an interview with [AFP](#) the importance of the Jeddah talks' success in halting the conflict and called for additional resources to be made available urgently to aid the millions of displaced people.

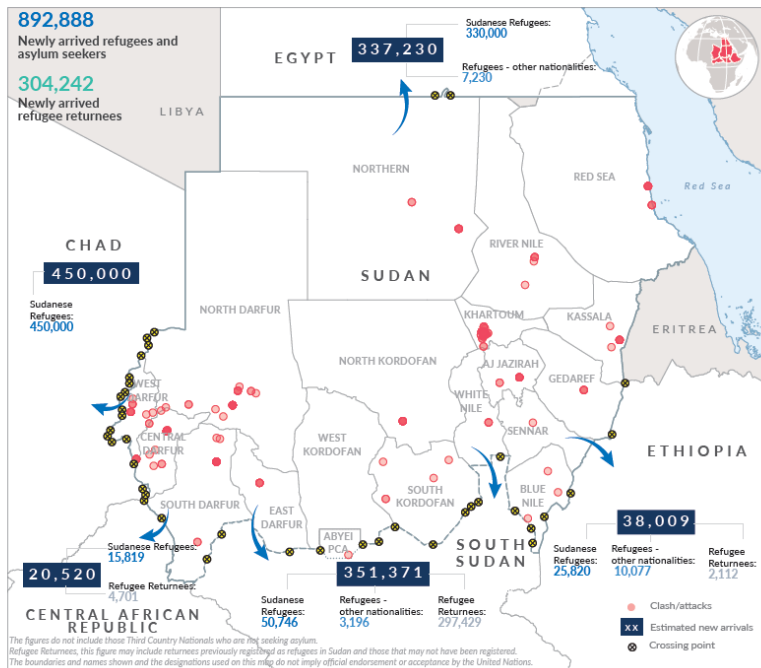
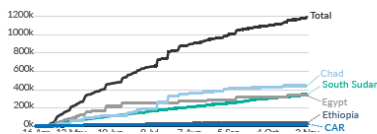
**OVERVIEW:** There are now over 6.2 million forcibly displaced due to the outbreak of conflict in Sudan, including 4.9 million internally and nearly 1.2 million in neighbouring countries. Sudan was already hosting large refugee populations before being impacted by this new emergency and, like hosting countries, needs additional support to provide protection and critical life-saving assistance, including for those who have been secondarily displaced within the country. Urgent needs include water, food, shelter, health, and core relief items. The current priority activities are the registration of new arrivals, relocation away from border areas, identification of especially vulnerable families and persons with specific needs, and putting mechanisms in place to prevent and respond to gender-based violence and ensure alternative care services for unaccompanied refugee children.

**6,244,689** Forcibly Displaced  
**4,856,294** IDPs in Sudan  
**1,197,130** Newly arrived refugees, asylum seekers and returnees  
**191,265** Self-relocated Refugees in Sudan

Arrivals by population and estimated gender type



New arrivals from Sudan



## Situation and Operational Response

### SUDAN

#### Highlights

- The security situation in Darfur remains volatile with reported RSF mobilizations in El Geneina and ongoing clashes in El Fasher, leading to widespread displacements.
- In Central Darfur, the entire IDP population (55,000 people) in Hasahisa camp have moved to Hamidiya camp and public buildings amid reports of serious human rights violations.
- Dar Es Salam open area in Khartoum was shelled, impacting refugees, with unconfirmed casualties; nine refugees in the area reportedly died from cholera.
- The transport of supplies coming from White Nile State to Darfur via the UN inter-agency joint humanitarian convoy has been disrupted due to the deteriorating security situation.

#### Updates by Location

##### Khartoum

UNHCR received information about shelling in *Dar Es Salam* (an open area serving as refugee settlement) in Khartoum, causing casualties among refugees. The exact number of deaths and injuries remains unconfirmed. Furthermore, nine refugees in the area reportedly succumbed to cholera.

##### Darfur

After the capture of Nyala by RSF, the security situation in Darfur remains highly unstable, marked by RSF mobilization in El Geneina (West Darfur) and ongoing clashes in El Fasher (North Darfur), leading to widespread displacement in these areas. In Central Darfur, the entire IDP population in Hasahisa camp

(55,000 people) have moved to Hamidiya camp and public buildings amid reports of serious human rights violations by the parties to the conflict.

The precarious security situation has severely hampered the movement and delivery of humanitarian aid, impacting the distribution of essential supplies such as UNHCR mosquito nets, plastic tarpaulins, medical equipment, and medicines. Furthermore, the planned cross-border mission to Um Shalaya camp in Central Darfur has been postponed once again in light of these security concerns.

### **Red Sea State (Port Sudan)**

Amidst government plans to relocate IDPs from schools, humanitarian agencies, including UNHCR, have emphasized to local authorities that the relocation of displaced individuals must be voluntary.

### **Kassala**

UNHCR is engaging the United Nations Industrial Development Organization (UNIDO) to advocate for inclusion of IDPs in its vocational programmes for economic empowerment. In the past week, 131 new arrivals were received at the Shagarab reception centre.

### **Gedaref**

Thirteen suspected cholera cases have been reported in Um Gargour, with 11 of them having already recovered. Two patients are still undergoing treatment.

During the site management sector meeting, the Humanitarian Aid Commission (HAC) highlighted the need to relocate IDPs currently occupying school facilities and requested partners to initiate resource mobilization for this purpose. UNHCR is advocating for transferring the IDPs to existing facilities rather than establishing a new IDP camp.

### **Blue Nile State**

In the past week, 223 refugees and asylum seekers were registered in the region after crossing from Ethiopia's Benishangul-Gumuz Region. Meanwhile, the Commission for Refugees (COR) and UNHCR are working to relocate another group of 350 people from the Yabachar border to Camp 6.

### **West Kordofan**

Community-based protection networks have reported the withdrawal of security forces from Kharasana settlement in Keilak locality. This has left refugees in a state of uncertainty about their safety, particularly in light of rumors suggesting a potential attack on the settlement, given recent developments in the state.

### **Cross-border Operations**

Due to the deteriorating security situation, cross-border operations from Chad to West and Central Darfur have been suspended pending improvements in the security situation.

## **CHAD**

### **Highlights**

- The authorities in Chad informed UNHCR that an estimated over 8,000 new arrivals from Sudan have entered Chad in the past week, escaping fierce fighting around El Geneina.
- Since the start of the Sudanese refugee emergency in April, over 450,000 Sudanese refugees and asylum seekers have been counted in Chad.
- Over 2,200 refugees were relocated to the camps last week, bringing the total number of refugees relocated so far to 185,456.

### **Relocation**

Last week, 2,255 new arrivals were successfully relocated to the camps. This raises the total count of relocated refugees and asylum seekers to 185,456 individuals in 49,872 households.

## Protection

The authorities in Chad informed UNHCR that an estimated over 8,000 new arrivals from Sudan have entered Chad in the past week, escaping fierce fighting around El Geneina. UNHCR and partners are doing protection monitoring and registration and referring the wounded among them to medical facilities.

The individual registration of refugees has concluded in Ourang, while it remains ongoing in Milé and Arkoum camps. To date, 100,043 individuals have been registered, with 86 per cent being women and children, and 17 per cent comprising individuals with special needs, such as women and children at risk, older persons, and those living with disabilities.

In total, 2,249 children at risk, including UASC, were identified in Ouaddai, Sila, and Wadi Fira. Of these, approximately 900 received psychological, material, and financial assistance, including appropriate medical referrals. Child-Friendly Spaces (CFSs) are providing play-based learning and psychosocial support to over 60,000 children in Sila, Wadi Fira, and Ouaddai.

Moreover, ongoing awareness-raising sessions on children's rights, with a focus on safeguarding them from exploitation, abuse, and neglect, are being conducted in all areas. Nevertheless, the limited availability of resources and human capacity, notably an insufficient number of social workers, has hindered the efficacy of child protection initiatives.

## Health and Nutrition

**Health:** Since the beginning of the emergency, a total of 137,999 medical consultations have been conducted, with 12,073 consultations occurring in the past week. The most common health issues remain malaria, acute respiratory infections, watery diarrhea, and malnutrition.

In addition, 6,926 individuals have received mental health treatment, and qualified health personnel have attended to 1,840 deliveries since the onset of the emergency, including 186 deliveries in the past week.

**Nutrition:** A total of 64,209 children under five years were screened for malnutrition of which 15,628 with moderate acute malnutrition and 9,187 with severe acute malnutrition were treated. Out of 11,930 pregnant and breastfeeding women screened, 1,320 cases of moderate acute malnutrition were identified and treated.

## Shelter Infrastructure and WASH

A new refugee camp is being set up at Alacha, where shelter and WASH facilities are being constructed. 550 shelters have been constructed so far.

Three water towers are being constructed in Ourang, Metche and Arkoum refugee camps with the aim to enhance the water supply.

# ETHIOPIA

## Highlights

- As of 6 November, a total of 38,474 refugees and asylum-seekers along with 2,552 Ethiopian refugee returnees, have fled violence in Sudan and arrived in Ethiopia.
- Banks in Gende Wuha, the main town near Metema, are facing liquidity issues, with a daily withdrawal ceiling of only ETB 500 (USD 8.97) last week. If the situation persists, operational advances for Metema will need to be processed in Gondar and the cash transported to Metema (193km away), raising security concerns.
- General food distributions have resumed at the transit centre in Kurmuk, reaching over 9,000 individuals as of 03 November.
- Level 3 (L3) biometric registration of refugees continues at the Metema transit center, with 1,086 individuals (628 families) documented as of 04 November.
- Emergency education has begun at the Kurmuk transit centre with 189 children enrolled.

### Population Movements

As of 6 November, 38,474 refugees and asylum-seekers (18,089 families), as well as 2,552 Ethiopian refugee returnees, have crossed from Sudan to Ethiopia. Of these, 19,249 crossed through the Metema entry point in Amhara, 17,156 through the Kurmuk entry point in Benishangul-Gumuz Region (BGR) and 700 individuals through different entry points in Gambella (Pagak, Burbiey). Most of the new arrivals are Sudanese (67.9 per cent), followed by Eritreans (22 per cent), and South Sudanese (4.3 per cent).

### Protection

At the Kurmuk transit site, 12 children with specific protection needs, including seven girls, were identified, and registered, adding to the total count of 590 Unaccompanied and Separated Children (UASC) and Other Vulnerable Children (OVC) registered in the BGR since last April. Among these, 262 are girls. 371 children actively participated in indoor and outdoor learning and playing activities at the Child-Friendly Space (CFS) and were given high-energy biscuits.

At the Kumer site and Metema transit centre in Amhara region, 890 children, most of them girls, were engaged in indoor and outdoor recreational activities at the CFSs. Individual counseling was provided for two children who suffered from post-traumatic stress. Partner Innovative Humanitarian Solutions (HIS) organized home visits to 134 UASC to monitor their protection and wellbeing.

Partner International Rescue Committee (IRC) identified one Gender-Based Violence (GBV) survivor at the Kurmuk border and provided the necessary support, including psychosocial services. Training sessions and sensitizations were organized on GBV and Protection from Sexual Exploitation and Abuse (PSEA) at the food distribution site, reaching over 350 people.

Last week, 14 Persons with Special Needs (PSNs) were identified in Metema, bringing the total number of PSNs in the Amhara region's sites to 799 (comprising 429 males and 370 females). Clothes, custom sticks, sleeping mats and plastic jars were distributed among 39 children with disabilities and other vulnerable individuals.

### Registration

Ongoing Level 3 (L3) biometric registration of refugees at the Metema transit center has documented 1,086 individuals (628 families) as of 4 November, facilitating their access to essential assistance and services, including food.

### Distribution of food and other relief items

General food distributions began at Kurmuk last week, benefiting a total of 9,067 people, including both those at the transit center and those residing within host communities as of 03 November. Moreover, 6,390 individuals received firewood for cooking and other domestic needs, and 2,607 individuals among those living with host communities received cash assistance to facilitate the transportation of food and firewood from the transit center to their temporary shelters.

### Health and nutrition

At the Kumer settlement, 553 patients underwent medical consultations, including 69 individuals from nearby host communities. An additional 324 patients received medical consultations at the Metema transit center. Moreover, 82 children under the age of five and eight pregnant or breastfeeding mothers were screened for malnutrition, resulting in the referral of four individuals with moderate malnutrition for treatment. The shortage of vital medical supplies and diagnostic equipment at the Metema Primary Hospital remains a persistent challenge in providing adequate healthcare services to both refugees and their host communities.

### WASH

At the Kurmuk transit center, refugees and asylum-seekers currently receive a daily water allowance of 10 liters per person (l/p/d), while in Sherkole refugee camp, where some new arrivals are hosted, refugees receive 12 l/p/d. These allocations fall significantly below acceptable minimum standards due to budget constraints, limiting UNHCR's capacity to expand WASH services. In Sherkole, the construction of two gender-segregated latrine blocks with four seats each has been completed, narrowing the gap in latrine access.

In the Amhara region, the per capita water supply stood at 11.6 l/p/d and 12.8 l/p/d at Kumer settlement and at the Metema transit center, respectively, with a slight improvement seen at Kumer.

### Education

Partner Plan International Ethiopia (PIE) has initiated an Education in Emergencies (EIE) programme at the Kurmuk transit center, with 189 children currently enrolled in grade one classes.

## EGYPT

### Highlights

- Since mid-April, 338,374 people have entered Egypt fleeing the war in Sudan, including 330,000 Sudanese and 8,374 individuals of other nationalities.
- UNHCR has so far registered some 90,000 new arrivals from Sudan, 89 per cent of them Sudanese.
- The average number of calls to the UNHCR Infoline per day has increased by 142% compared to pre-crisis levels.

### Registration and Protection

Registration: As of 03 November, 129,427 new arrivals from Sudan have been given appointments for registration, of which 89,395 have been registered. This represents 38 per cent of the over 338,000 forcibly displaced people who have arrived from Sudan since mid-April. Most of the registered population are Sudanese nationals (89%), while the other main nationalities registered are South Sudanese (5%), and Eritrean (4%). 88 per cent of the registered new arrivals originate from Khartoum. 22 per cent have one or more specific needs.

Community-based Protection: In the past week, refugee outreach workers at UNHCR's Refugee Reception Center in 6th of October City (Greater Cairo) provided information to over 3,735 refugees and asylum-seekers about available services and assistance. Additionally, more than 2,130 individuals received psycho-social support through UNHCR's partner organizations.

Infoline: 9,227 inquiries were handled by UNHCR's Infoline last week and registration appointments given to 4,653 individuals. This brings the overall number of people who received registration appointments through the system to 56,273. Following the merger of the Infolines for Cairo and Alexandria, the average number of calls per day has increased by 142% compared to pre-crisis levels.

### Education

To kick off the new academic year, UNHCR distributed the initial installment of education grants to over 49,000 children via the Egypt Post Office. Furthermore, an additional 26,545 refugees and asylum-seekers have sought registration for education grants in 2023 through UNHCR's partner organizations.

Following the rise in education fees and the potential risk of non-Egyptian children missing the school year, the refugee community has strongly expressed its concerns to UNHCR. Some families have even indicated that if access to education for their children continues to be limited, they may contemplate onward movement to Libya.

## SOUTH SUDAN

### Highlights

- As of 5 November, a total of 362,380 individuals have arrived in South Sudan, including 14,426 individuals over the past week. South Sudanese returnees make up 83 per cent of all arrivals while Sudanese refugees constitute 16 per cent.
- Border monitoring teams observed a 13 per cent increase in new arrivals in the past week, compared to the weekly average of 12,800 individuals. Reasons for the increase include the deteriorating security situation in Sudan, limited access to services, and fears of escalation of conflict in Kosti and nearby areas.

- The road from Renk to Maban remains impassable due to recent heavy rains and flooding preventing the safe and dignified relocation of refugees and asylum-seekers to Maban refugee camps.
- Over 20,000 individuals are estimated to be residing at the Transit Center in Renk, overcrowding the site and raising health concerns. There is a shortage of emergency shelters and transit site extension construction cannot keep up with increased numbers and will not be sufficient due to significant funding shortfalls.
- Out of 54,679 refugees and asylum seekers that have arrived since April, 61 per cent have been biometrically registered.

### Protection

Registration: 54,679 refugees and asylum seekers have arrived in South Sudan since the start of the Sudan refugee emergency, with 61 per cent (33,656 individuals) biometrically registered so far. In Renk, 986 refugees have been biometrically registered out of 14,809 that have been profiled for registration.

Persons with Specific Needs: Since the start of the emergency, 32,832 individuals with at least one vulnerability have been identified at the border with Sudan. The top three vulnerabilities include women at risk (41 per cent), persons with disabilities or serious medical condition (27 per cent) and female headed household (20 per cent).

### Health and Nutrition

Nutrition: The primary challenge for new arrivals, notably in Paloich, is the absence of food or cash assistance. In Renk, WFP has ended cash aid for refugees who haven't undergone UNHCR's biometric registration, while in Bentiu, WFP initiated biometric registration for returnees who will receive food assistance.

Hot meals were provided to 545 refugee new arrivals in Maban and Aweil, while high energy biscuits were provided to 10 refugees in Abyei until dry rations or cash assistance from WFP is provided.

Out of 1,322 children under five that were screened for malnutrition in Renk, Malakal and Aweil, 266 were identified as malnourished. The acute malnutrition level gets high at 20.1 per cent which exceeds the WHO emergency threshold.

Health: at the transit center in Renk, 2,208 medical consultations were conducted in addition to 141 pregnant women who received antenatal care last week.

A total of 7,717 children between the ages of six months and 15 years received different types of age-appropriate vaccinations, including for measles, polio and other routine vaccinations. This brings the cumulative number of vaccinated children to date to 25,087.

In Renk, the health interagency, in close collaboration with the WASH cluster, is actively enhancing cholera preparedness plans. They conducted a biweekly meeting to reinforce cholera prevention messaging.

### Water and Sanitation

At the Renk transit center (TC) and at the Joda border, the recent influx of people has severely stretched the available water supply and the limited latrine facilities, with only 62 stalls serving a population exceeding 20,000 at the TC. Community volunteers carried on with solid waste management and hygiene messaging. At the Joda border, the growing population resorting to open defecation due to inadequate WASH services has raised concerns about potential health outbreaks.

In Renk/Joda, water quality monitoring is ongoing to guarantee the safety of the water supply, especially given the double threats of cholera waterborne illnesses. However, the water provision at the Joda border remains inadequate due to the surge in new arrivals. With a total population of around 20,000 individuals in the Renk transit center and its vicinity, overcrowding at water points has escalated the demand for water provision. As a response, the supervision by appointed attendants was intensified to ensure fair access to water resources.

Latrine coverage remains a critical concern in Renk and other locations, exacerbated by the decommissioning of emergency latrines surpassing the construction of new ones.

### Shelter and NFI

At the Joda border and in Renk, the inadequate number of individual makeshift shelters leaves families vulnerable to rain, while communal shelters are already full. In Renk, construction on an extension site for 46 planned communal shelters and two communal kitchens is ongoing, but there is an urgent need for funding to complete these shelters and build an additional 82 communal shelters to accommodate the growing population.

At the Wedwil transit center, 10 family tents were installed to accommodate new arrivals, while construction of 342 shelters is at different stages of completion. The demarcation of 492 plots, out of a planned 1,057, has been finished, facilitating the reception of newcomers from Abyei and Wau.

In Abyei, construction is in progress for three communal shelters and four toilet blocks at the transit center, with anticipated completion by the end of November.

In Paloich, 14 emergency shelters were built to house 59 individuals (16 families) awaiting relocation. Approval has been granted for the construction of a kitchen and a communal shelter at the Doro reception center. Meanwhile, in the Bulukat transit center, all 40 communal shelters are currently occupied by returnees.

### IT/ TELECOMMUNICATIONS

In Renk and Wedwill, UNHCR ensures continuous internet connectivity for UN agencies, NGOs, and other partners, supporting their operations. Additionally, internet connectivity is supporting biometric registration in both locations.

UNHCR provides internet access to support refugees and other displaced individuals taking university exams.

## Response Plans and Funding Situation

### Revised Regional Refugee Response Plan (RRP) – May-December 2023

- On 4 September, UNHCR and 64 partner organisations published a revised inter-agency [Sudan Emergency Regional Refugee Response Plan – May to December 2023](#), which is appealing for **USD 1,004,761,770** to provide essential aid and protection to over 1.8 million people expected to arrive in five neighbouring countries by the end of 2023, fleeing ongoing conflict in Sudan. As of 06 November, total funding of USD 387.3 million has been recorded or **39%** of the funding requirements ([Refugee Funding Tracker](#)).
- RRP Summary: [Sudan Regional Refugee Response Plan \(May-December 2023\) – At a Glance](#).

### Humanitarian Response Plan (HRP) – May-December 2023

- The revised inter-agency [Humanitarian Response Plan \(HRP\) for Sudan \(May-December 2023\)](#) requires **USD 2.57 billion** to help 18 million people. As of 06 November, the total funding for the HRP reached some USD 862.3 million or **33.6%** of the requirements ([OCHA FTS](#)).



## Revised UNHCR Supplementary Appeal – May-December 2023

- On 4 September, UNHCR issued a revised [Sudan Emergency Supplementary Appeal \(May-December 2023\)](#) to reflect increased needs of **USD 506,528,613**. As of 06 November, the total available funding for the appeal was USD 166.3 million or **33%** of the funding requirements ([Sudan Situation Funding Update](#)).

## Resources

- UNHCR's [Operational Data Portal \(ODP\) for the Sudan Situation](#) provides daily updates on the refugee and returnee arrivals in Sudan's neighbouring countries.
- [UNHCR and IOM Joint Dashboard](#) of arrivals to South Sudan, including data on returnee intentions, onward movements, and numbers and locations of returnees in and around Renk.
- [UNHCR Global Focus Sudan Operation page](#)
- [UNHCR Sudan Emergency website](#)
- [Sudan Emergency: Six months impact update-6 November 2023](#)
- UNHCR's HELP site for Refugees and Asylum-Seekers in Sudan provides information to individuals seeking information and support inside Sudan (in [English](#) and [Arabic](#)).

**Contacts:** **Kisut Gebreegziabher** – Assistant Communications Officer, Regional Bureau for the East and Horn of Africa and the Great Lakes, RBEHAGL ([gegziabk@unhcr.org](mailto:gegziabk@unhcr.org)); **Joyce Munyao-Mbithi** – Senior Donor Relations Officer, RBEHAGL ([munyao@unhcr.org](mailto:munyao@unhcr.org)); **Kabami Kalumiya** – Reporting Officer, RBEHAGL ([kalumiya@unhcr.org](mailto:kalumiya@unhcr.org)).