



## Background

More than 12 years since the start of the conflict in Syria, Lebanon remains at the forefront of one of the worst humanitarian crises of our time. The country hosts an estimated 1.5 million displaced Syrians who have fled the conflict in Syria, along with 180,000 Palestine Refugees in Lebanon (PRL) and 31,400 Palestinian Refugees from Syria (PRS). These populations live across all governorates in Lebanon.





Since 2019, Lebanon has simultaneously faced an unprecedented and multifaceted economic, financial, social and health crisis. Vulnerable populations supported under the LCRP have been deeply affected by a sharp increase in socio-economic needs, gaps in critical supply chains and limitations on access to food, healthcare, education, employment and other basic services, while at the same time facing depreciation of the Lebanese Pound high inflation rates. Deteriorated protection space and increased social tension further hinder the ability of refugees to access vital services.

Since 2015, Lebanon has received over \$9.3 billion in support for displaced Syrians, vulnerable Lebanese, Palestinian refugees, and public institutions under the Lebanon Crisis Response Plan (LCRP).

## Scope & Overview

The LCRP is an integrated humanitarian and stabilization response plan co-led by the Government of Lebanon and the United Nations, through which partners come together to seek to meet needs across vulnerable populations and respond to the ongoing impact of the Syria crisis on Lebanon's population, economy and institutions. Interventions under the plan are made possible through donor contributions and are implemented by humanitarian organizations, the government, and development partners. The LCRP aims to provide support across all sectors, prevent further deterioration of living conditions, and particularly assist the most vulnerable groups.

The LCRP has four strategic objectives:

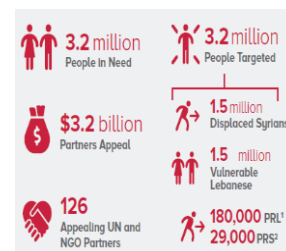
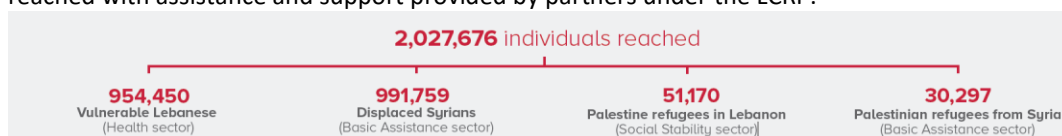
-  1. Ensure the protection of displaced Syrians, vulnerable Lebanese, and Palestinian refugees.
-  2. Provide immediate assistance to vulnerable populations.
-  3. Support service provision through national systems.
-  4. Reinforce Lebanon's economic, social, and environmental stability.

Achievements under the LCRP, in cooperation with the Government of Lebanon, include:

- Support to Lebanese public institutions and critical infrastructure (example: water and waste management).
- A wide range of initiatives helping municipalities address livelihoods and service provision for their communities and support to mitigate tensions at the local level.
- Extensive cash assistance bringing life-saving support to the poorest groups while boosting the local economy.
- Support to health centers and hospitals around the country.
- Substantial advances in helping the Government of Lebanon (GoL) enroll children in public schools every year.
- Contributions to a protective environment for vulnerable people, including an annual improvement in the registration of Syrian births.

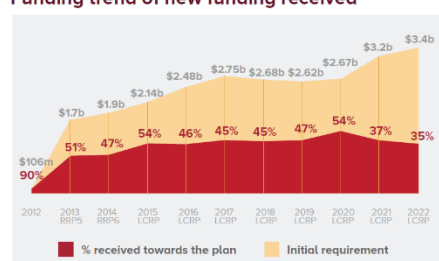
## 2022 End of Year Figures

Out of the 3.2 million people identifies as in need in 2022, around 2.03 million individuals were reached with assistance and support provided by partners under the LCRP.



In 2022, funds covering **45% of the \$3.36 billion appeal** were made available, including \$1.171 billion received in 2022, plus \$331 million in carry-over and multi-year funds received in 2021.

Funding trend of new funding received



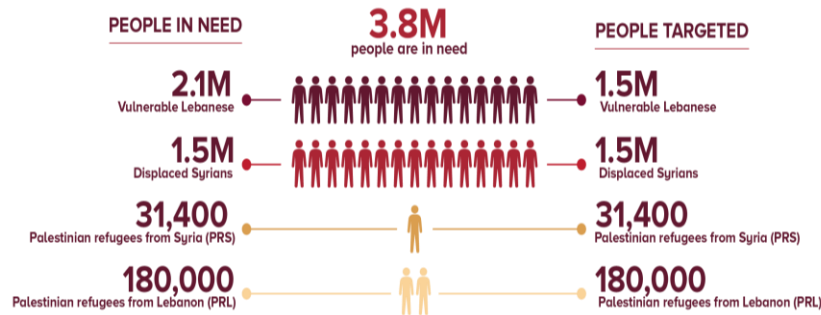
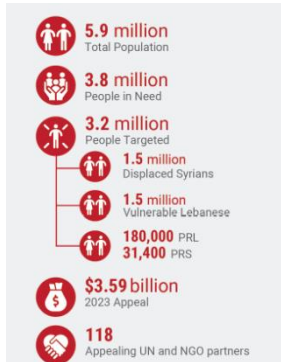
# Lebanon Crisis Response Plan (LCRP) Briefing and Key Highlights



**Inter-Agency  
Coordination  
Lebanon**

## Population In Need and Targeted in 2023

Out of the 3.8 million people identified as in need in 2023, 3.2 million individuals are targeted under the LCRP.



## Mid-Year Funding Update 2023

As per the latest Q2 Funding Update for 2023, 23% (\$828 M) of the appeal is available for the Lebanon Crisis Response Plan (LCRP).

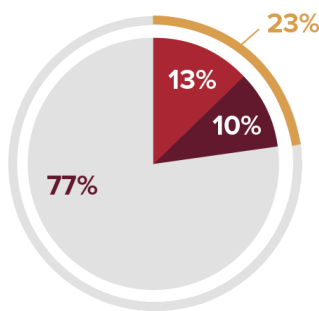
### Available

**\$828  
MILLION**

\$465.5 million received between January and End of June 2023 plus \$362.5 million of funds received in 2022 for 2023 projects + carry-over

### LCRP 2023 Appeal

**\$3.6  
BILLION**



- Received only between Jan and End of June 2023  
\$465.5 million
- Carry-over from 2022 and multi-year fund  
\$362.5 million
- Gap  
\$2.8 billion
- Available  
\$828 million

In 2023 to date, Protection, Water, and Education are the highest funded sectors to date (by % of appeal), while Energy, Nutrition, and Shelter are the lowest funded sectors. The Water sector had the largest increase in funds received between Q1 and Q2 2023, followed by Protection.

## 2023 funding received and allocated (million USD)

