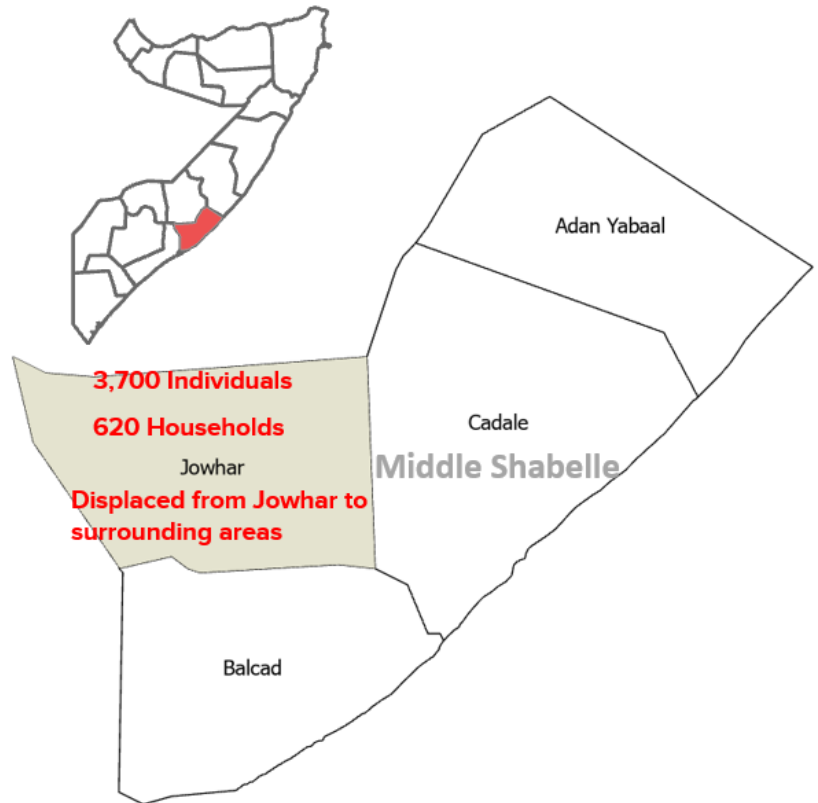
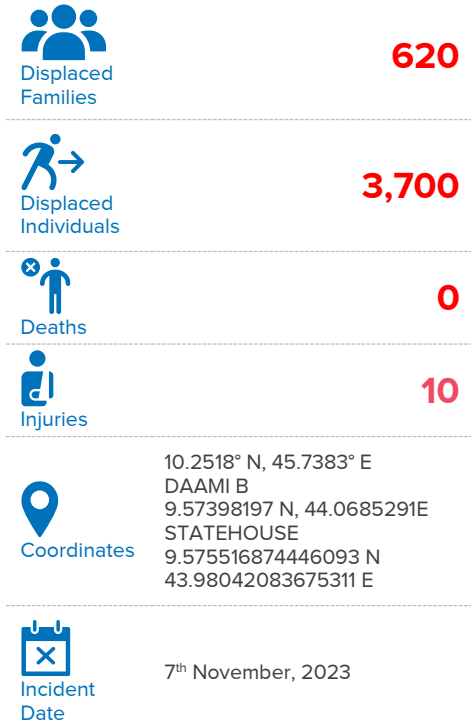


## Heavy Rains and Flash Floods displace 3,700 Individuals in Jowhar, Middle Shabelle, Somalia.



### Background

Heavy rains and flash floods displaced 620 households (approximately 3,700 individuals) and injured 10 vulnerable persons who were residing in Jowhar and Mahaday districts. The rain affected host communities, exacerbating the situation for residents, farms, and infrastructure. Affected settlements include Kacanka, Maryan Cabdulle, Dhurwayle, Alla-amin, Jiliyaale, Tawakal, Gololey Mobleen, and Macashaka. Floods have washed away 62 animals (livestock), and destroyed 100 shelters, 30 latrines, and 3 public schools, leaving communities struggling to rebuild.

Immediate needs include shelter and non-food items, food, healthcare, and protection services. Residents have had to sleep outdoors or seek refuge with neighbors due to the destruction of their shelters.

There are concerns of additional displacement due to the anticipated heavy rainfall, which could further worsen the flooding situation in Jowhar.

### Protection Risks

- Discrimination and Stigmatization, Denial of Resources, Opportunities, Services and/or Humanitarian Access:** The displaced have lost access to their personal property and other essential goods including shelter, latrines, food, and utensils, leading to potential widespread disease outbreaks and hunger. Vulnerable women, the elderly, and children are the most impacted due to their

#	Previous Location	Arrival location	Households
1	Kacanka	Hawlwadaag	85 HHs
2	Maryan Cabdulle	Maguurto	40 Hhs
3	Dhurwayle	Buurane	58 HHs
4	Al amin, Jilyaale and Tawakal	Hantiwadaag	350 HHs
5	Gololey Mobleen	Taga Cadule Roble	55 HHs
6	Macashka	Dhaygawan	32 HHs
<b>620 households (approximately 3,700 individuals)</b>			

heightened vulnerabilities. Displaced individuals urgently require access to food, protection services, and pasture for their remaining livestock. There is also potential for escalating conflict over limited resources.

- **Gender based violence:** Community protection structures are strained limiting access for women and children in need of safety from sexual exploitation and violence including domestic violence.

### Urgent Needs



Food



Emergency Shelter



Protection



Non-Food Item



Communal Latrine



Safe Drinking Water



The PRMN (Protection & Return Monitoring Network) is a UNHCR-led project which identifies and reports on displacements as well as protection risks and incidents underlying such population movements. On behalf of UNHCR and the Norwegian Refugee Council (NRC), 38 local partners in the field in Somalia (South Central regions, Puntland and Somaliland) undertake data gathering (primarily through interviews with affected communities and key informants) and monitoring at strategic locations.

To request further details on displacement, please contact [SOMMOPMN@UNHCR.ORG](mailto:SOMMOPMN@UNHCR.ORG)

Implementing Partner



From the People of Japan

