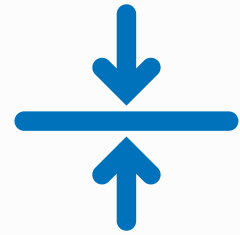


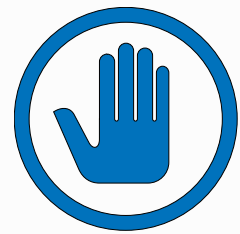
PSEA INTER-AGENCY RISK ASSESSMENT MOLDOVA



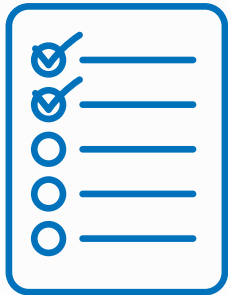
PURPOSE OF THE RISK ASSESSMENT



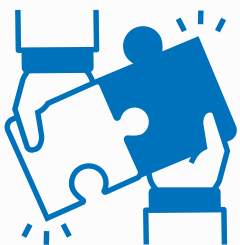
Establish a national baseline on Sexual Exploitation and Abuse to guide programming, risk management and monitoring



Evaluate the effectiveness of existing SEA prevention and mitigation efforts



Provide evidence for the development of the 2024 PSEA Inter-Agency Action Plan for Moldova



Promoting collaboration and a unified response to addressing SEA within the humanitarian and development community.

FRAMEWORK

The Moldova SEA risk assessment, grounded in UN Inter-Agency Standing Committee (IASC) and OECD-DAC standards for PSEA, evaluates the local PSEA architecture against international recommendations and the Moldovan context. Utilizing the Sexual Exploitation and Abuse Risk Overview (SEARO) methodology, a composite index, it analyzes varied risk factors across four dimensions:

- 1. Enabling Environment:** Examines socio-political and legal contexts, including laws, societal norms, human rights violations, and gender inequalities, that facilitate SEA.
- 2. Humanitarian and Aid Context:** Assesses SEA risks in crises, factoring in crisis magnitude, affected populations, and severity of needs, acknowledging increased risks due to vulnerability in such situations.
- 3. Operational Context:** Evaluates humanitarian operations for SEA risks, considering operational design, aid type, and worker awareness and commitment to SEA prevention, with an emphasis on reducing risk through informed and dedicated agencies.
- 4. Protective Environment:** Reviews existing capacities and measures for SEA prevention and response, including PSEA policies, staff capacity, reporting mechanisms, support services, and organizational accountability.

RISK OF SEXUAL EXPLOITATION & ABUSE																
Dimension	Enabling Environment				Humanitarian Context				Operation Context				Protective Environment			
Category	Policy & Societal Norms		Human Rights & Gender Equality		Crisis Scope & Intensity		Response Scale & Complexity		Response Modalities		Response Institutions		Capacity & Resources	Mechanisms & Accountability		
Comment	Laws, Policies & Practices	Institutions & Services	Violence Against Women & Children	Gender Inequalities	Crisis Scope & Intensity	Crisis Severity	Operational Size	Operational Complexity	Operational Design & Management	Operational Reach	Leadership & Staffing	Institutional Culture & Practices	Funding & Resources	Coordination & Programming	Reporting & Accountability	Survivor Assistance

ETHICAL CONSIDERATIONS



In-depth Training for Enumerators:

Covered PSEA principles, "Do No Harm," confidentiality, victim-centered approach, response protocols.



Code of Conduct & Confidentiality Agreement:

Signed by all enumerators to ensure privacy and ethical standards.



Anonymized Data Collection:

No personal identifiers collected; focus group discussions not recorded.



Informed Consent: Detailed explanation provided:

oral consent obtained for confidentiality.



Child Protection:

Conducted by specialized organizations; focus on sensitive child-centric research.



Information Provision:

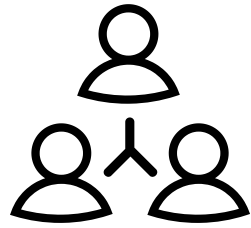
Participants given multilingual cards with reporting procedures and support information.



Data Security:

Utilized UNHCR-hosted platforms, no physical data copies to prevent unauthorized access.

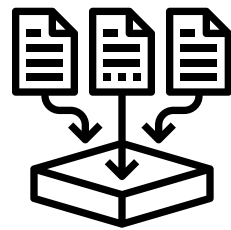
LIMITATIONS OF THE ASSESSMENT



Organizational Coverage:

Limited Participation engagement with Red Cross/Red Crescent, government, volunteers.

Leadership survey limited to UN Country Team members and Refugee Response Plan partners, excluding some civil society and faith-based organizations.



Data Collection Methods:

Focus group discussions captured through notes, not verbatim transcriptions or recordings, potentially leading to information loss or misinterpretation.



Timing of Assessment:

Conducted during peak response with maximum resources. Risks of SEA may increase as humanitarian capacity and assistance reduce post-peak period.

METHODOLOGY

Innovative approach, integrating institutional analysis with people-centered perspectives. Focus on refugees, host community voices, and access to information and services.



Secondary Data Review

Utilizes reports from UN agencies, governments, multilaterals.



Face-to-Face Interviews (6-12 June 2023)

113 interviews across Moldova, exploring barriers to aid and SEA risks.



Focus Group Discussions

14 FGDs, including with refugees, host communities, women-led organizations, disabled persons, Roma refugees. **Topics:** Access to aid, SEA risks, understanding of reporting mechanisms.



Leadership Survey

32 senior staff from UN agencies, INGOs, NNGOs, faith-based organization. Focus on PSEA operational standards.



Perception Survey with Aid Workers (May 2023)

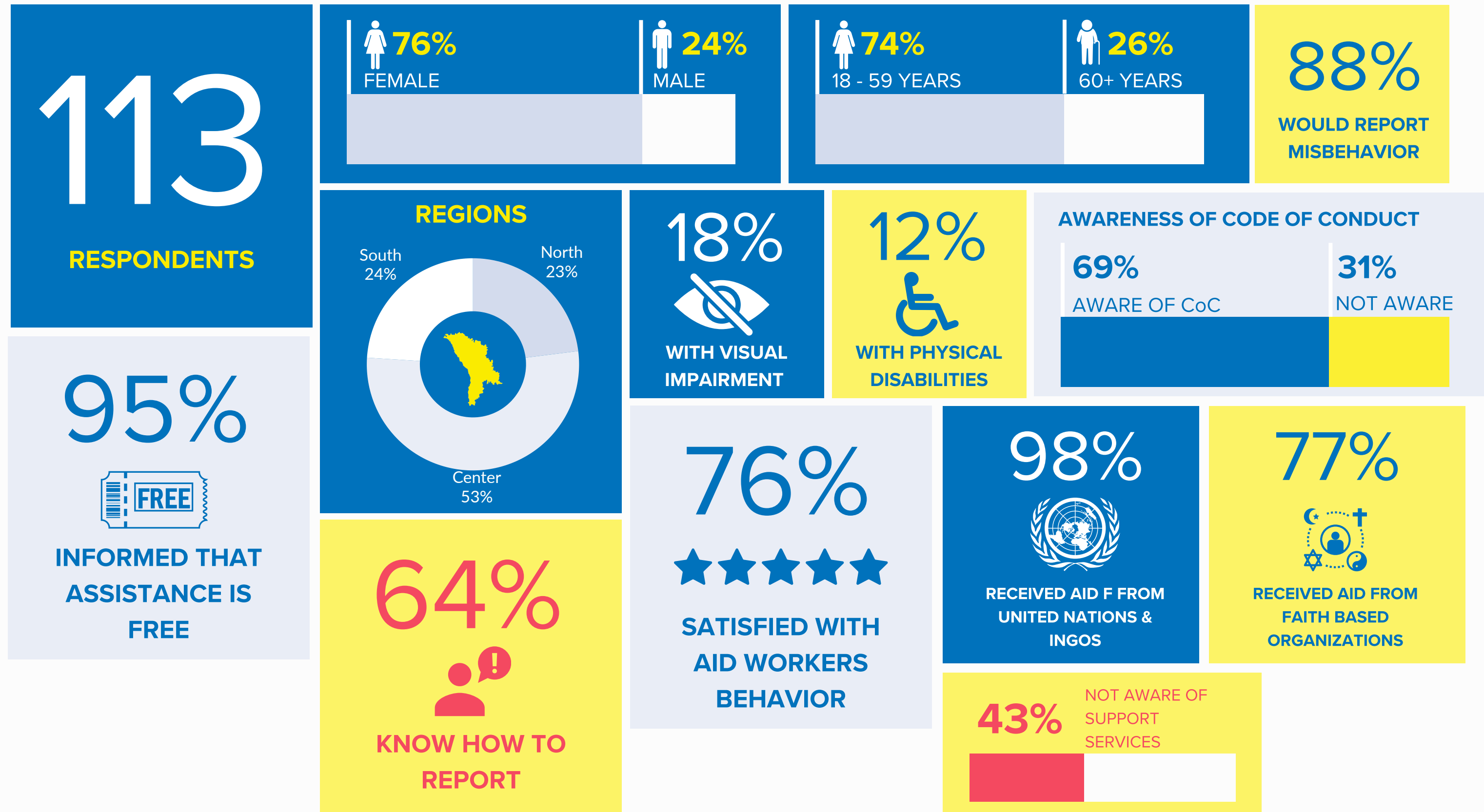
353 aid workers surveyed on PSEA awareness and practices.



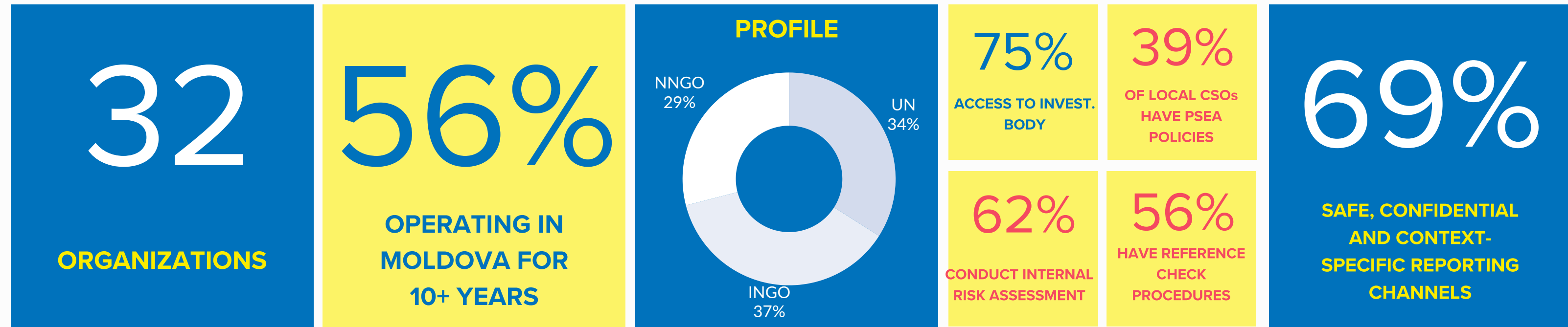
Safety Assessment of RACs

39 centers assessed using **69 indicators** across **9 areas**.

Perception Survey with Individuals Receiving Aid



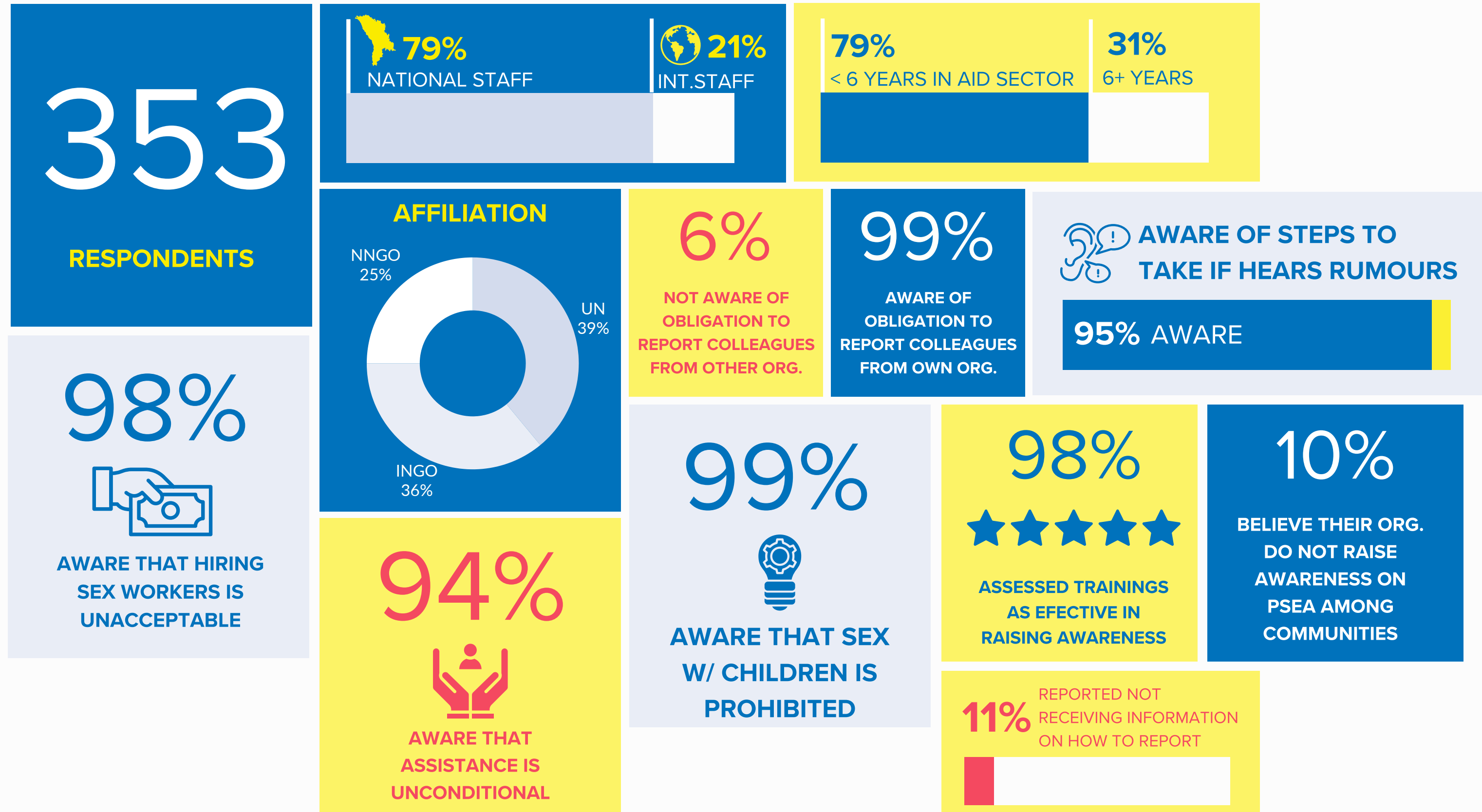
ORGANIZATIONAL LEADERSHIP SURVEY



FOCUS GROUP DISCUSSIONS



Perception Survey with Aid Workers



Refugee Accommodation Center Safety Assessment

Region	Access	Information	Accessib.	Disclos.	Child Prot.	Staffing	Lighting	Privacy	Services	Safety Index
South	94%	100%	100%	100%	100%	100%	100%	100%	100%	99%
North	100%	88%	75%	92%	78%	92%	100%	84%	100%	90%
North	76%	100%	38%	50%	100%	100%	79%	84%	100%	81%
South	82%	88%	13%	75%	78%	100%	100%	68%	100%	78%
South	71%	88%	50%	75%	61%	100%	100%	76%	80%	78%
North	94%	92%	38%	42%	67%	100%	100%	64%	100%	77%
North	76%	88%	25%	67%	78%	77%	100%	84%	100%	77%
Chisinau	100%	92%	0%	42%	67%	100%	100%	88%	100%	77%
South	94%	88%	13%	92%	44%	100%	79%	56%	100%	74%
Chisinau	88%	88%	0%	42%	67%	100%	100%	76%	100%	73%
Chisinau	65%	80%	63%	67%	72%	54%	100%	80%	70%	72%
Chisinau	88%	100%	25%	42%	50%	77%	86%	88%	80%	71%
Center	47%	92%	63%	67%	78%	8%	86%	88%	100%	70%
Center	65%	80%	38%	75%	33%	77%	100%	60%	100%	70%
Chisinau	76%	28%	38%	50%	33%	100%	79%	68%	100%	64%
Chisinau	41%	60%	38%	75%	33%	77%	93%	68%	70%	62%
South	24%	32%	75%	50%	67%	77%	79%	88%	50%	60%
North	94%	88%	13%	42%	33%	92%	79%	64%	20%	58%
South	65%	40%	25%	25%	67%	92%	43%	60%	100%	57%
North	59%	28%	0%	67%	67%	54%	100%	72%	70%	57%
South	53%	80%	0%	42%	61%	77%	79%	52%	70%	57%
Chisinau	41%	80%	50%	67%	0%	31%	100%	68%	70%	56%
Chisinau	47%	28%	25%	42%	33%	100%	86%	72%	70%	56%
Chisinau	65%	56%	25%	17%	17%	100%	36%	72%	100%	54%
Center	59%	8%	0%	42%	33%	54%	100%	56%	100%	50%
North	82%	8%	63%	67%	0%	23%	93%	44%	50%	48%
North	24%	56%	0%	67%	50%	23%	43%	40%	70%	41%
Center	41%	60%	25%	75%	0%	23%	79%	20%	40%	40%

39 RACs Assessed

55% Average Safety Index

Key Challenges:

- Disability Inclusion
- CoC and HR Procedures
- Child Protection

Sexual Exploitation and Abuse Risk Overview in Moldova

3.9

SEARO scores and ranks the overall risk of SEA for countries with humanitarian response operations. It also individually scores each dimension, category and component in the analytical framework. Because the underlying data have huge variations and different formats, the score for each component is “normalized” to a common scale between 1.0 and 9.9, with a higher number denoting higher risk. This provides a consistent way to understand each component and also enables comparisons among components and countries (SEARO, 2022). For more information, please visit: <https://psea.interagencystandingcommittee.org/iasc-sea-risk-overview-index>

COMPOSITE SEA RISK FOR MOLDOVA				3.9			
ENABLING	3.7	OPERATIONAL	5.2	HUMANITARIAN	1.8	PROTECTIVE	5
Policy & Societal Norms	4.4	Response Institutions	5.6	Crisis Scope & Intensity	1.7	Capacity & Resources	5
Laws, Policies & Practices	3.7	Leadership & Staffing	4.7	Scope & Intensity	2	Coordination & Leadership	4.4
Institutions & Services	5.1	Organizational Culture	6.5	Crisis Severity	1.3	Funding & Resources	5.5
Human Rights & Inequality	3.1	Response Modalities	4.9	Needs Scale & Complexity	2	Mechanisms & Accountability	5
Violence v Women & Children	4.1	Operational Design	5.1	Operation Size	3.6	Survivor Assistance	5
Gender Inequality	2.1	Operational Reach	4.7	Operation Complexity	0.4	Reporting & Accountability	4.9

KEY SEA RISKS IN THE MOLDOVAN CONTEXT



**PSEA IS A SHARED RESPONSABILITY
AND REQUIRES COLLECTIVE
EFFORTS**