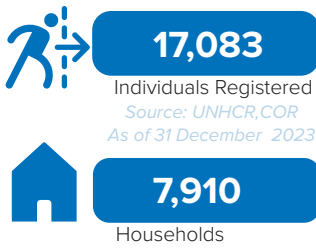


Total Arrivals from Ethiopia



Introduction:

In response to the influx of Ethiopian refugees into eastern Sudan, UNHCR and the Government of Sudan, in collaboration with other partners, opened Um Rakuba refugee camp in Gedaref State on 12 November 2020. The first group of refugees were relocated from the transit centres at the border to this site on 13 November 2020. The majority of the refugees in Um Rakuba camp are from the Tigray region of Ethiopia. As of end December 2023, the camp accommodates 17,083 refugees, all of whom are biometrically registered and provided with assistance. The dashboard below presents the population profile for Um Rakuba camp.

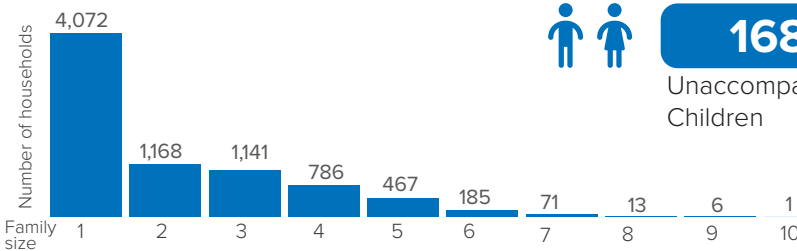
Persons with Specific Needs



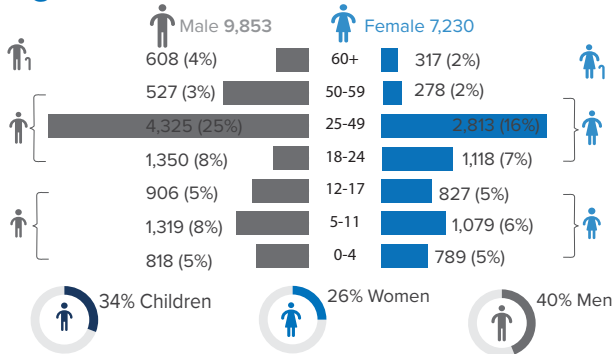
Country of Origin



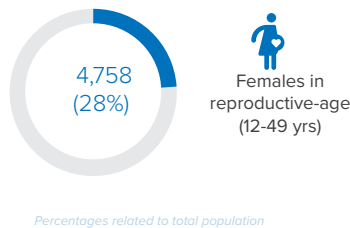
Family Size



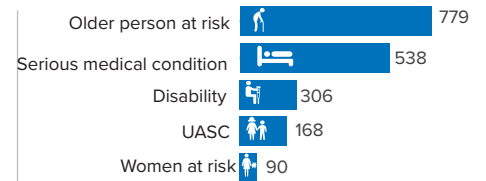
Age-Gender Breakdown



Reproductive-Age Women/Girls

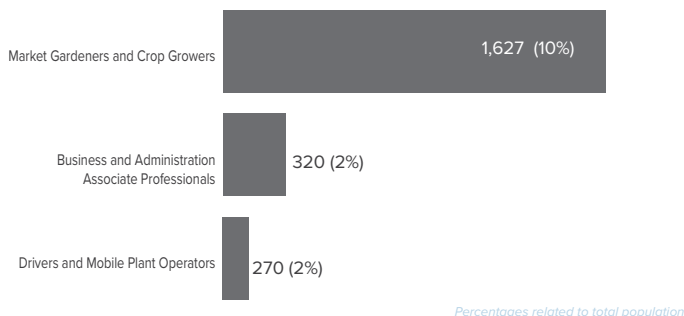


Specific Needs (Top 5)



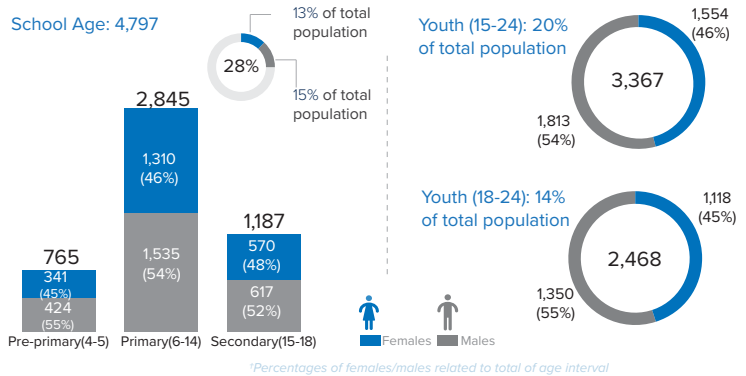
**UASC: Unaccompanied or separated child
Source: ProGres v4/Rapp*

Occupation (Top 3)



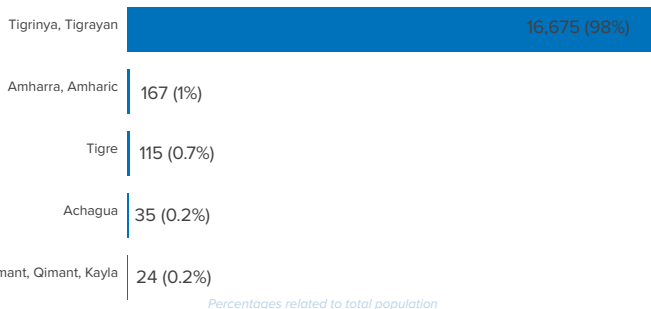
**Occupation and skills of population aged 18 and above*

School Age Children and Youth



**Percentages of females/males related to total of age interval*

Ethnicity (Top 5)



Top 5 Areas of Origin (Ethiopia Admin 3)

