

Total Arrivals from Ethiopia



2,631

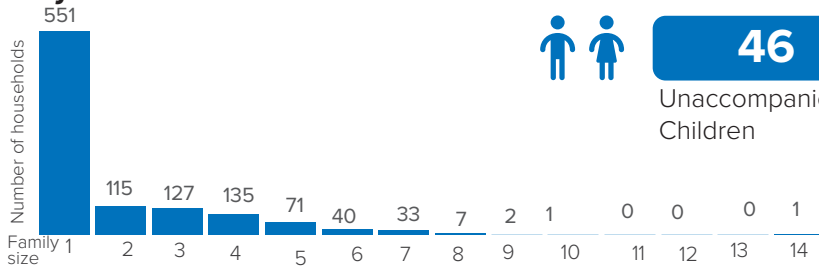
Individuals Registered
Source: UNHCR, COR
As of 29 February 2024



1,082

Households

Family Size



Introduction:

Babikri settlement was opened on 28 November 2021 to accommodate refugees fleeing Ethiopia due to armed conflict in November 2020. Since the outbreak of conflict in Sudan in April 2023, the camp has received refugees and asylum seekers secondarily displaced from Khartoum, Al Jazirah and other parts of the country in addition to the Ethiopian refugee caseload. These include those who spontaneously arrived in the camp after fleeing conflict-affected areas and those who relocated with the support of UNHCR, the Commission for Refugees and other partners.

Persons With Specific Needs



163

Individuals



46

Unaccompanied/Separated Children

Country of Origin

2,530

Ethiopians

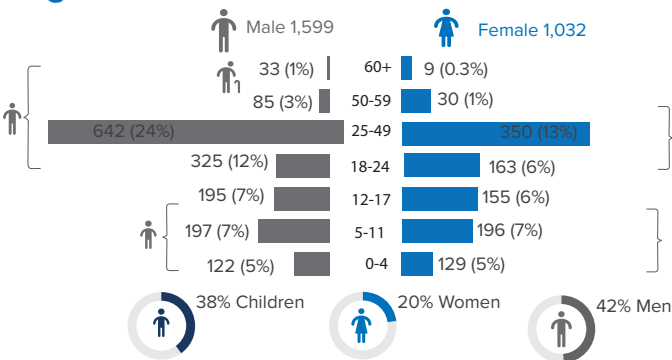
100

Congo

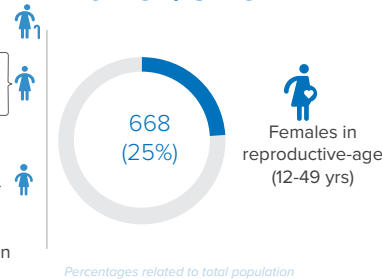
1

Eritrean

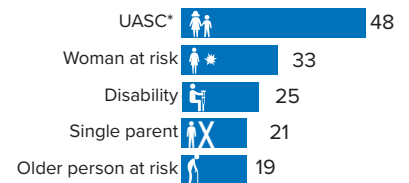
Age-Gender Breakdown



Reproductive-Age Women/Girls



Specific Needs (top 5)



*Unaccompanied or separated child
Source: ProGres v4/Rapp

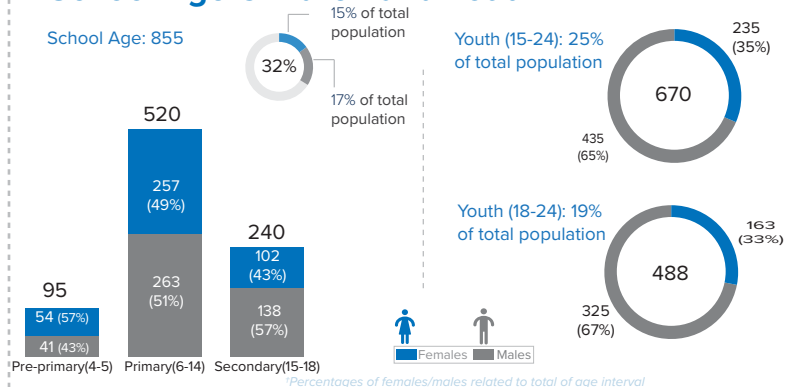
Occupation



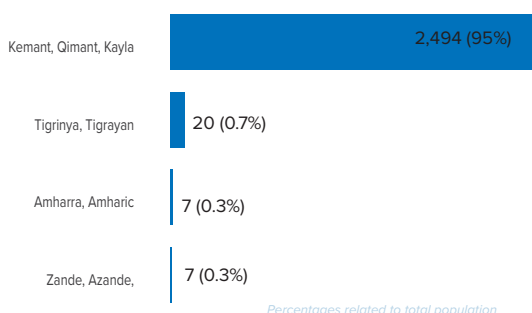
*Occupation and skills of population aged 18 and above

Percentages related to total population

School Age Children and Youth



Ethnicity (Top 4)



Top 4 Areas of Origin (Ethiopia Admin 3)

