

## Total Arrivals from Ethiopia Introduction:


**22,585**

 Individuals Registered  
 Source: UNHCR, COR  
 As of 29 February 2024

**8,635**

Households Registered

Tunaydbah camp was opened on 3 January 2021 to accommodate refugees fleeing Ethiopia due to armed conflict in November 2020.

Since the outbreak of conflict in Sudan in April 2023, the camp has received refugees and asylum seekers secondarily displaced from Khartoum, Al Jazirah and other parts of the country in addition to the Ethiopian refugee caseload. These include those who spontaneously arrived in the camp after fleeing conflict-affected areas and those who relocated with the support of UNHCR, the Commission for Refugees and other partners.

As of end February 2024, the camp accommodates 22,585 refugees (including secondarily displaced refugees), all of whom are biometrically registered and provided with assistance.

## Persons with Specific Needs


**2,020**

Individuals


**143**

Unaccompanied/Separated Children

## Country of Origin

**22,512**

Ethiopians

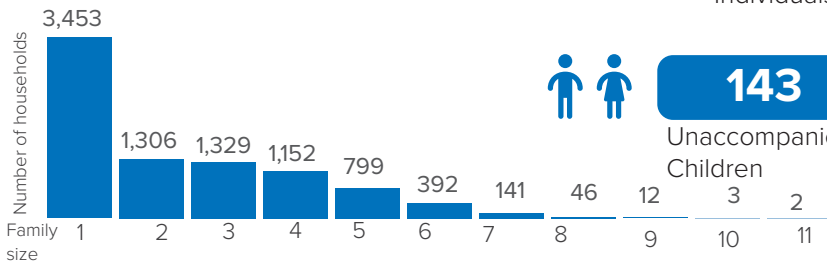
**70**

Eritreans

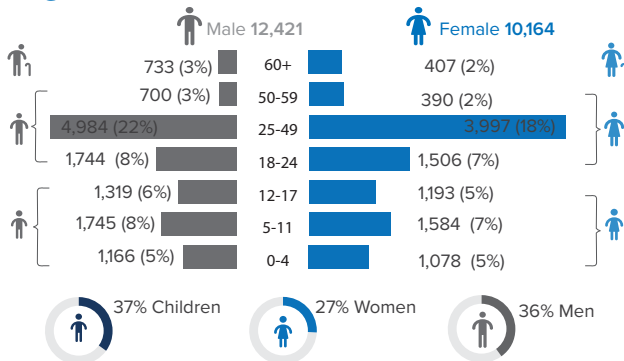
**3**

DRC

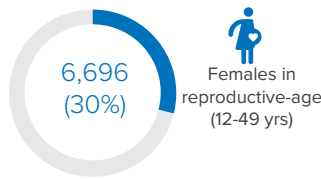
## Family Size



## Age-Gender Breakdown

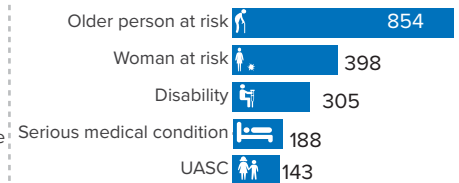


## Reproductive- Age Women/Girls

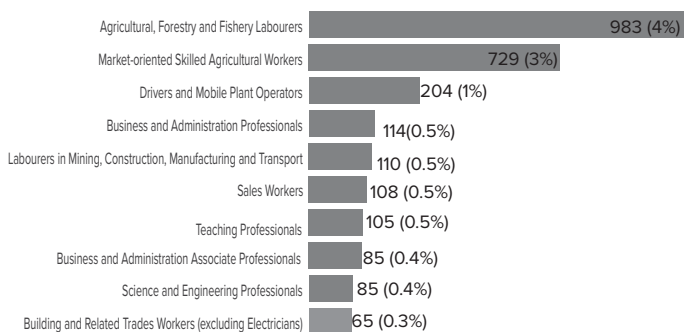


Percentages related to total population

## Specific Needs (top 5)

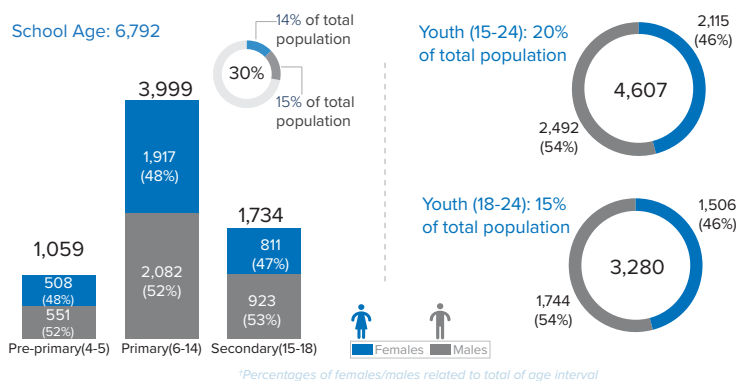

 Source: ProGres v4/Rapp  
 \*UASC: Unaccompanied or separated child

## Occupation (Top 10)



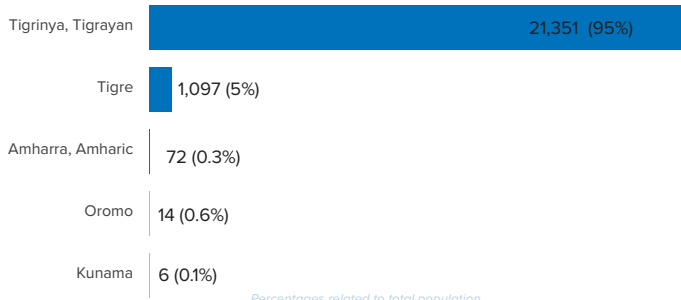
\*Occupation and skills of population aged 18 Percentages related to total population and above

## School Age Children and Youth



\*Percentages of females/males related to total of age interval

## Ethnicity (Top 5)



## Top 5 Areas of Origin

