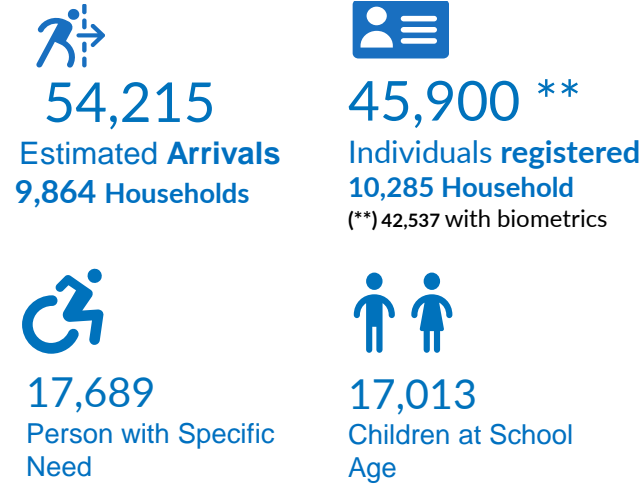
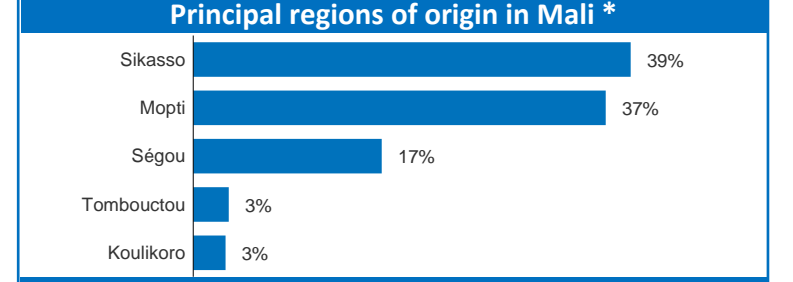
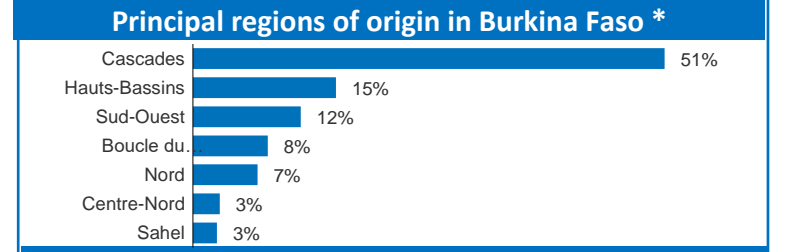
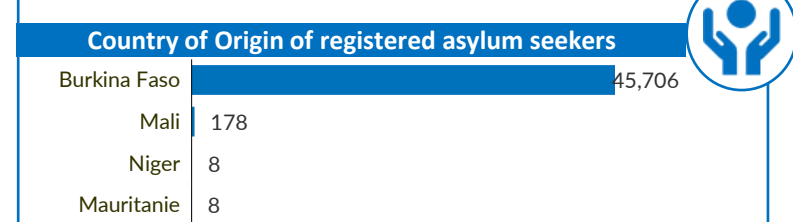
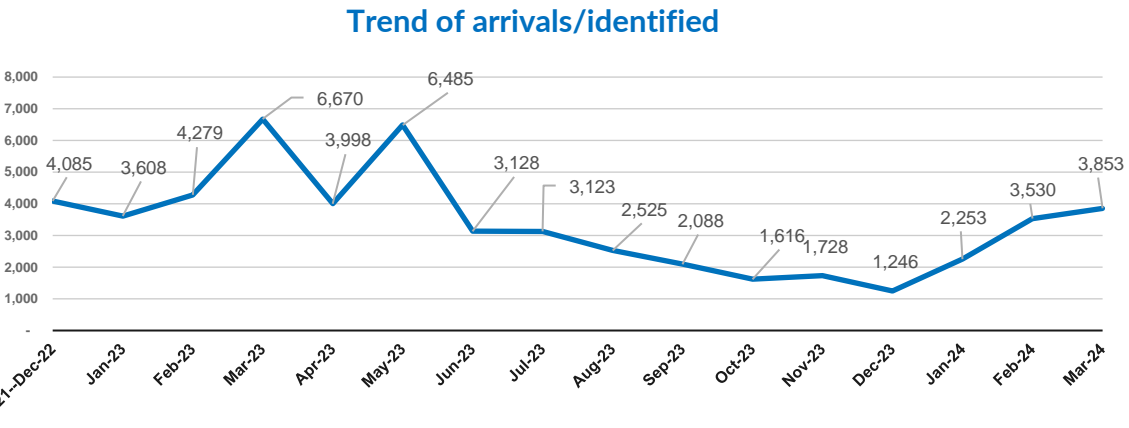


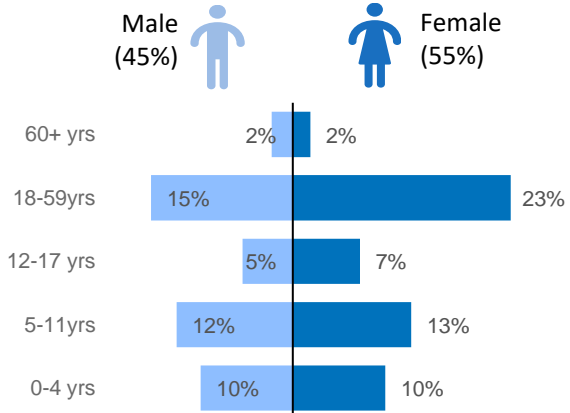
**Key Figures**



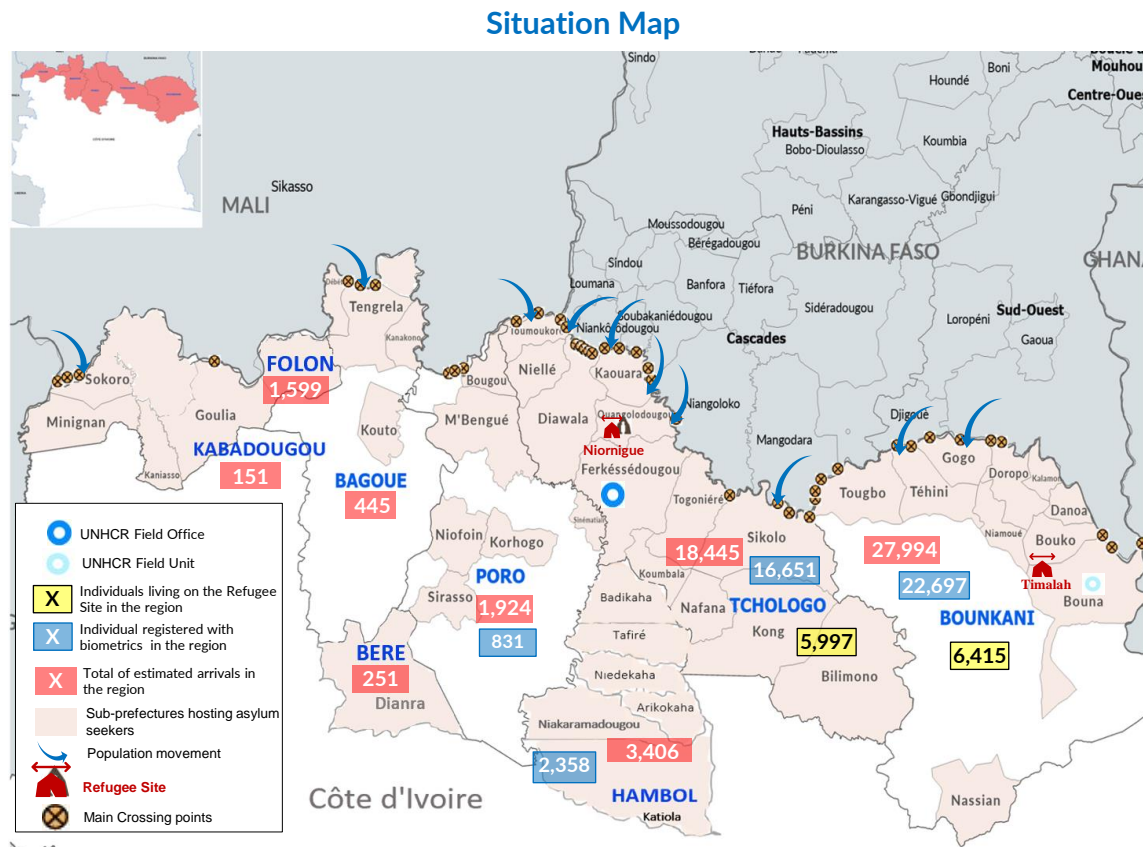
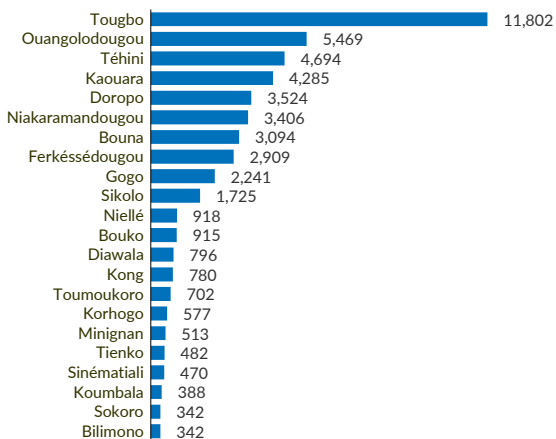
New arrivals from Burkina Faso and Mali are currently registered as asylum seekers. The main reasons for the departure of asylum seekers from their villages in Burkina Faso are **armed conflicts / generalized insecurity, threats, intimidation and attacks by non-state armed groups in the villages.**



**Age and Gender Breakdown\***

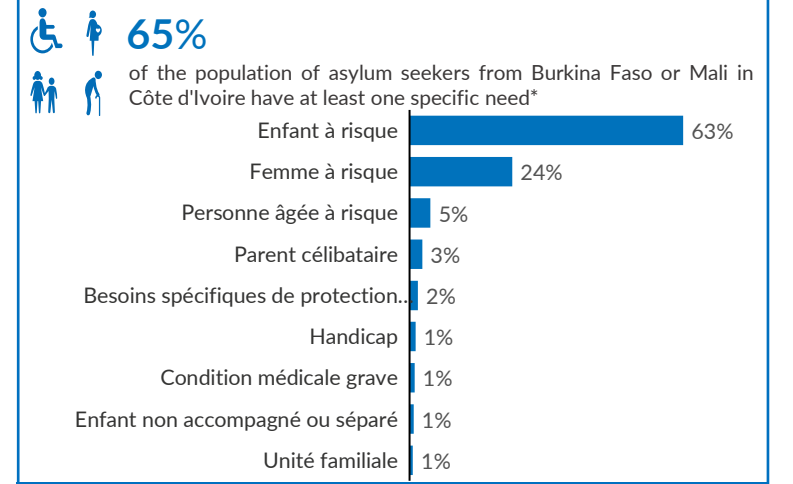


**Sub-prefectures hosting asylum seekers\***

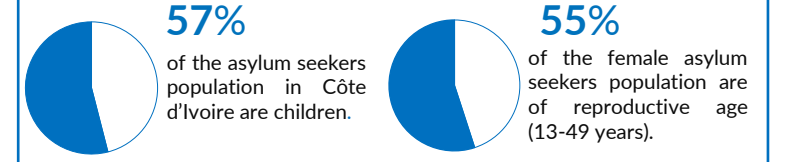


(\*) The data is exclusively that of biometrically registered persons.  
The boundaries and names shown and the designations used on this map do not imply official endorsement or acceptance by the United Nations.

**Distribution of specific needs\***



**Children and women in reproductive age\***



(\*) sub-prefecture having received at least 100 asylum seekers