

## Total Arrivals from Ethiopia



**2,698**

Individuals Registered  
Source: UNHCR, COR  
As of 30 June 2024



**1,101**

Households

## Introduction:

Babikri settlement was opened on 28 November 2021 to accommodate refugees fleeing Ethiopia due to armed conflict in November 2020. Since the outbreak of conflict in Sudan in April 2023, the camp has received refugees and asylum seekers secondarily displaced from Khartoum, Al Jazirah and other parts of the country in addition to the Ethiopian refugee caseload. These include those who spontaneously arrived in the camp after fleeing conflict-affected areas and those who relocated with the support of UNHCR, the Commission for Refugees and other partners. As of end June 2024, the settlement accommodates 2,698 refugees (including secondarily displaced refugees), all of whom are biometrically registered and provided with assistance. The dashboard below presents the population profile for Babikri Settlement:

## Persons With Specific Needs



**213**

Individuals



**66**

Unaccompanied/Separated Children

## Country of Origin

**2,590**

Ethiopians

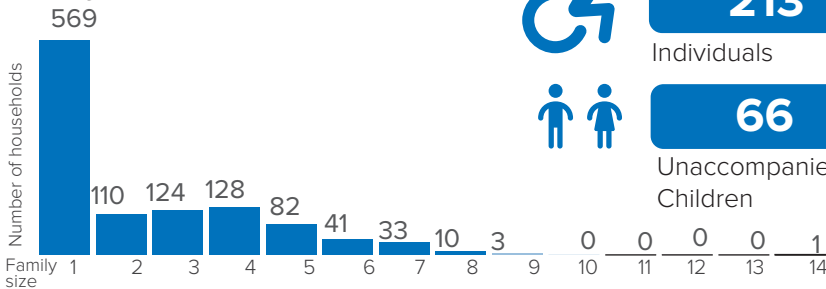
**107**

DRC

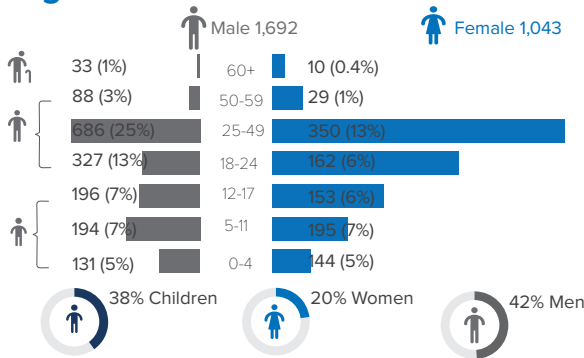
**1**

Eritrean

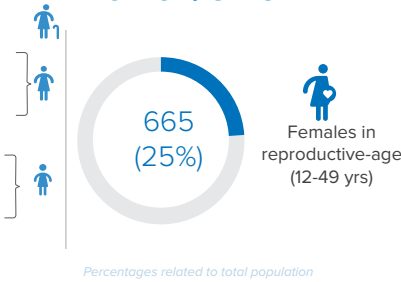
## Family Size



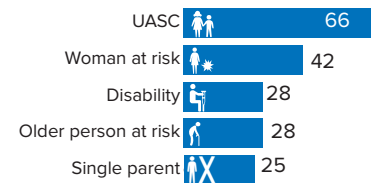
## Age-Gender Breakdown



## Reproductive-Age Women/Girls

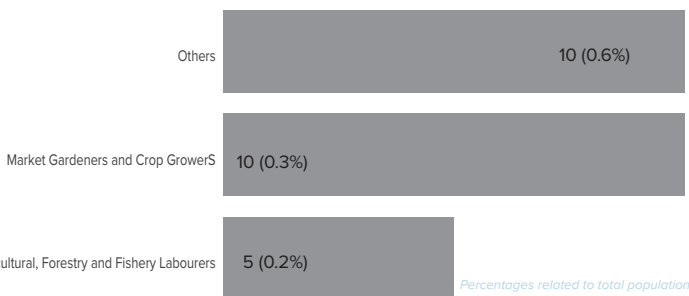


## Specific Needs (top 5)



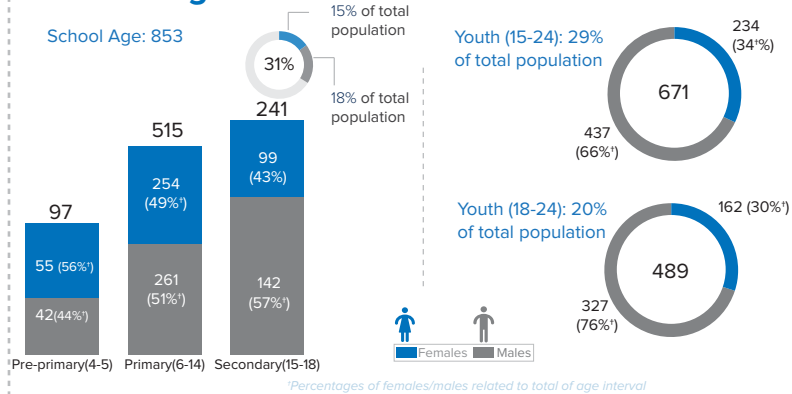
\*Unaccompanied or separated child  
Source: ProGres v4/Rapp

## Occupation

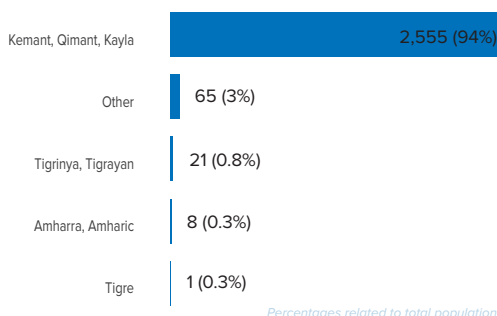


\*Occupation and skills of population aged 18 and above

## School Age Children and Youth



## Ethnicity (Top 4)



## Top 3 Areas of Origin (Ethiopia Admin 3)

