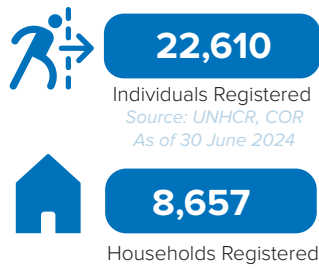


Total Arrivals from Ethiopia Introduction:

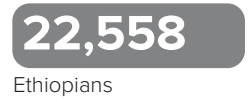


Tunaydbah camp was opened on 3 January 2021 to accommodate refugees fleeing Ethiopia due to armed conflict in November 2020. Since the outbreak of conflict in Sudan in April 2023, the camp has received refugees and asylum seekers secondarily displaced from Khartoum, Al Jazirah and other parts of the country in addition to the Ethiopian refugee caseload. These include those who spontaneously arrived in the camp after fleeing conflict-affected areas and those who relocated with the support of UNHCR, the Commission for Refugees and other partners. As of end June 2024, the camp accommodates 22,610 refugees (including secondarily displaced refugees), all of whom are biometrically registered and provided with assistance. The dashboard below presents the population profile for Tunaydbah camp:

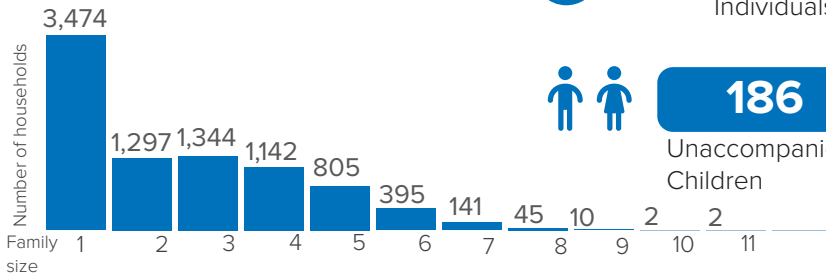
Persons with Specific Needs



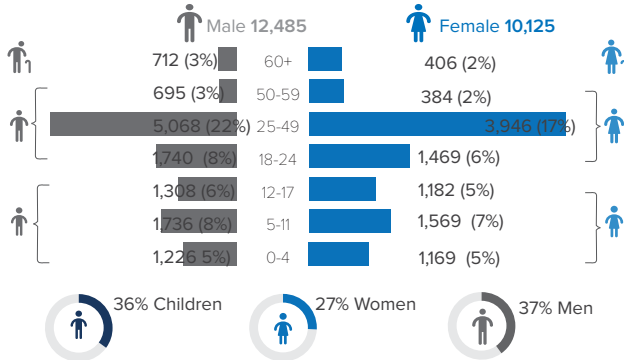
Country of Origin



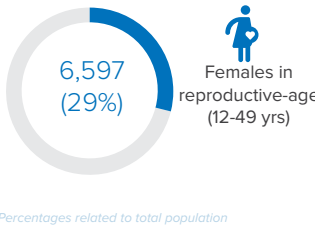
Family Size



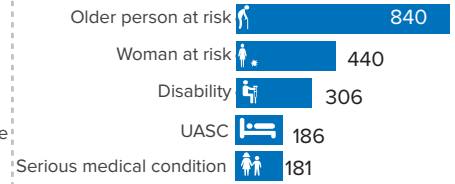
Age-Gender Breakdown



Reproductive- Age Women/Girls

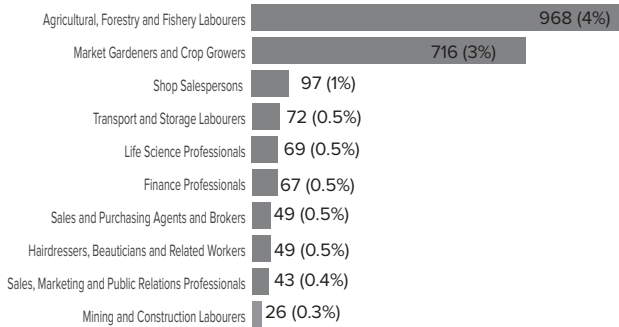


Specific Needs (top 5)



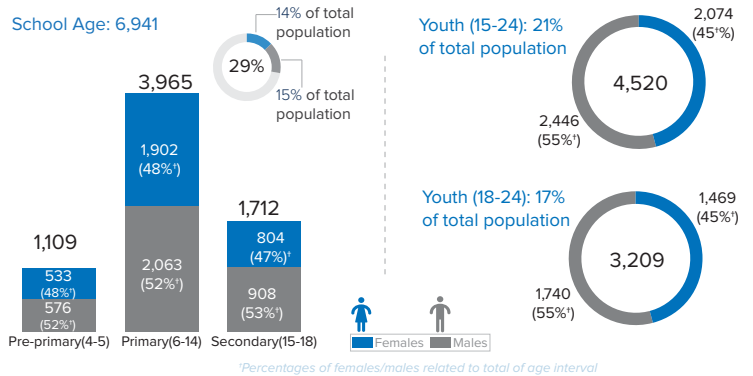
*Source: ProGres v4/Rapp
UASC: Unaccompanied or separated child

Occupation (Top 10)

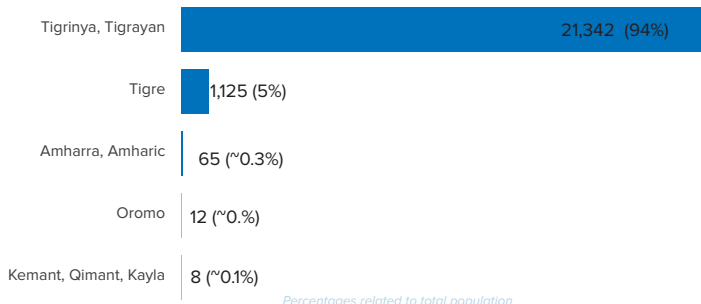


**Occupation and skills of population aged 18 and above Percentages related to total population*

School Age Children and Youth



Ethnicity (Top 5)



Top 5 Areas of Origin (Ethiopia Admin 3)

