

## Total Arrivals from Ethiopia



**14,778**

Individuals Registered  
Source: UNHCR, COR  
As of 30 June 2024



**3,730**

Households

## Introduction:

Um Gargour camp was opened in January 1976 and the majority of its residents are refugees from Eritrea and Ethiopia in protracted displacement situation.

Following the outbreak of conflict in Sudan on 15 April 2023, thousands of refugees and asylum-seekers fled Khartoum and other unsafe areas, seeking safety in Jazirah and Gedaref states. In an exercise that began on 17 May 2023, UNHCR, in collaboration with Sudan's Commission for Refugees and other partners, relocated 769 secondarily displaced refugees and asylum-seekers from Hasahisa, Wad Medani (Jazirah state) and Um Gulja (Gedaref state) to Um Gargour to ensure their safety and provide them with assistance. At the same time, 393 refugees and asylum-seekers self-relocated to the camp and have been registered/verified and provided with assistance. The dashboard below presents the population profile for the newly relocated/self-relocated refugees and asylum seekers in Um Gargour Camp:

## Persons with Specific Needs



**1,142**

Individuals



**16**

Unaccompanied/Separated Children

## Country of Origin

**13,817**

Eritreans

**1**

DRC

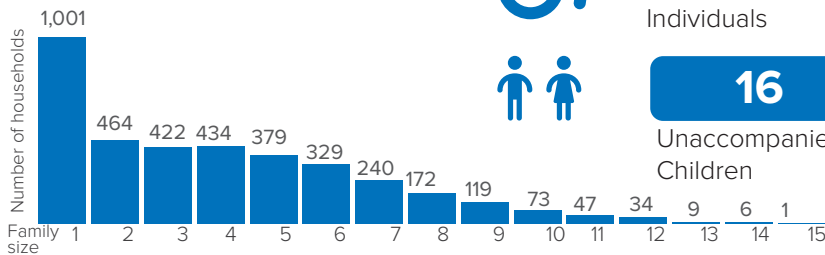
**956**

Ethiopians

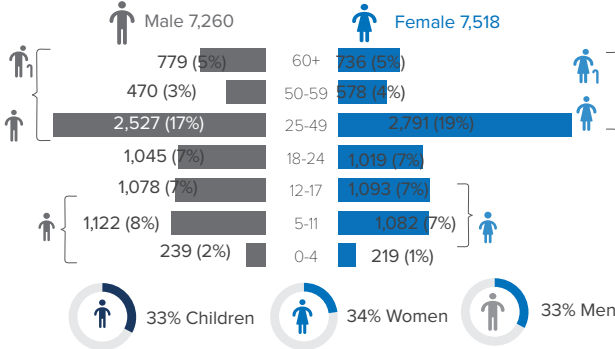
**4**

Somalians

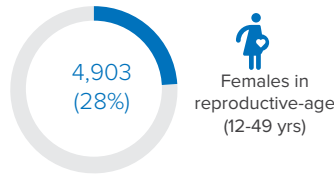
## Family Size



## Age-Gender Breakdown

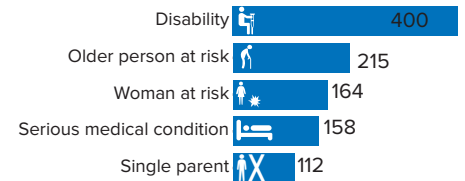


## Reproductive-Age Women/Girls



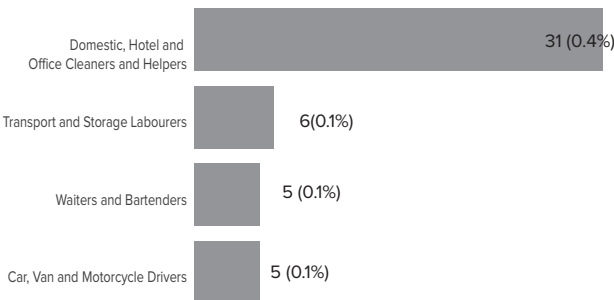
Percentages related to total population

## Specific Needs (top 5)



\*Unaccompanied or separated child  
Source: ProGres v4/Rapp

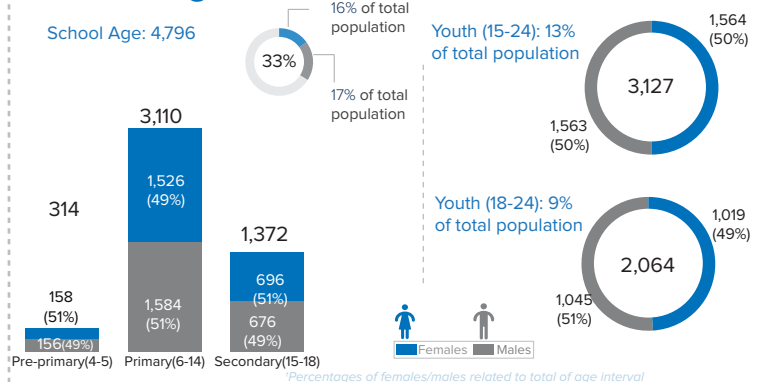
## Occupation



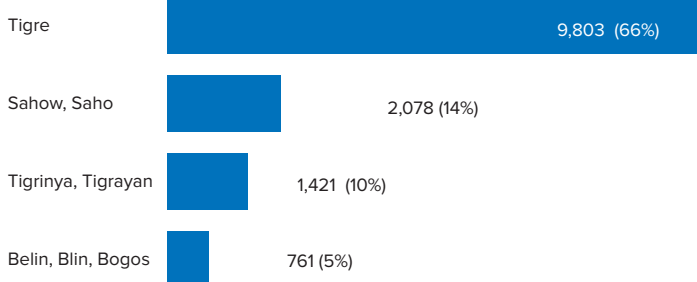
\*Occupation and skills of population aged 18 and above

Percentages related to total population

## School Age Children and Youth

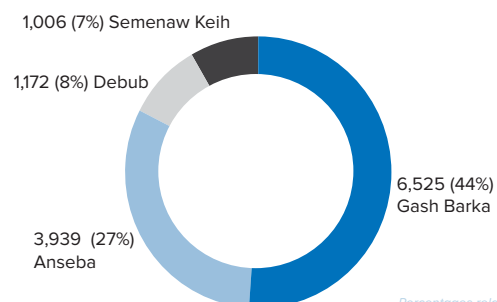


## Ethnicity (Top 4)



Percentages related to total population

## Top 4 Areas of Origin (Admin 3)



Percentages related to total population

