



## U-Learn Entrepreneurship & Private Sector Engagement Resources

### Refugee Entrepreneurship in Uganda: Desk Review for the Uganda Refugee Response.

This desk review pulls together trends, challenges, and findings from 25 sources, from the last 13 years (2010–2022), that are related to entrepreneurship in the Ugandan refugee response and global best practices for refugee entrepreneurship.

**Desk Review:** <https://ulearn-uganda.org/entrepreneurship-desk-review/>

### Exploring the challenges faced by formal refugee-owned businesses in Uganda

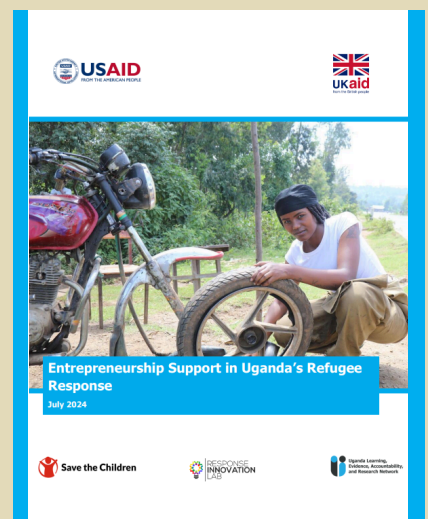
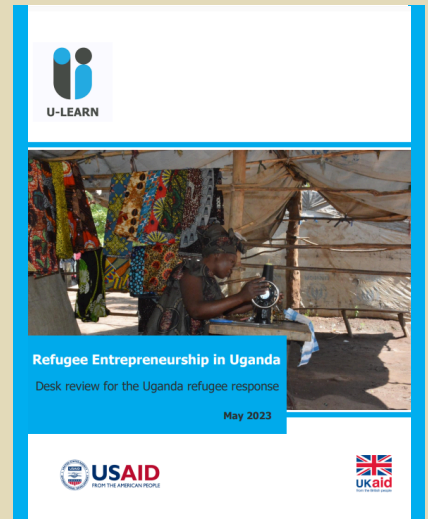
This evidence brief compiles information currently available about the challenges refugees in Uganda face when registering and operating formal businesses.

**Evidence Brief:** <https://ulearn-uganda.org/exploring-the-challenges-faced-by-formal-refugee-owned-businesses-in-uganda/>

### Entrepreneurship Support in Uganda's Refugee Response Learning Brief

This learning brief takes stock of the different approaches to supporting entrepreneurship in Uganda's Refugee Response. It documents learning on types of entrepreneurship support, as well as stages of entrepreneurship, to inform future programming.

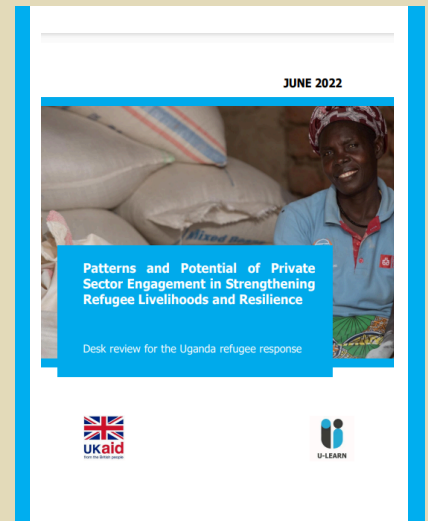
**Learning Brief:** <https://ulearn-uganda.org/digital-savings-groups-in-uganda-learning-brief/>



## Private Sector Engagement (PSE) Desk Review

This desk review collated the body of existing literature on refugee response PSE to create a widely available pool of knowledge that supports evidence-based decisions and practices in the Uganda refugee response.

**Desk Review:** <https://ulearn-uganda.org/desk-review-on-private-sector-engagement-in-the-uganda-refugee-response/>



## Agriculture sector Private Sector Actor (APSA) Mapping

The mapping covers Agri-tech service providers offering services in the refugee response, i.e. settlements, as well as refugee hosting districts and Kampala.

- **Agriculture Sector Private Sector Actor Mapping:** <https://ulearn-uganda.org/a-mapping-of-agriculture-private-sector-actor-apsa-in-ugandas-refugee-response/>
- **Agri-tech Mapping:** <https://ulearn-uganda.org/actor-mapping/>

