

## Key Figures



472,000

Estimated **individuals**

who arrived in Syria from Lebanon  
Since 23 Sep 2024



126,209

Estimated **household**

who arrived in Syria from Lebanon  
Since 23 Sep 2024



6

Border crossing points



4

Health / Protection border post

Since the escalation of hostilities in Lebanon, an estimated number of individuals, including both Lebanese and Syrians, have crossed the border from Lebanon into Syria.



71%  
Syrians



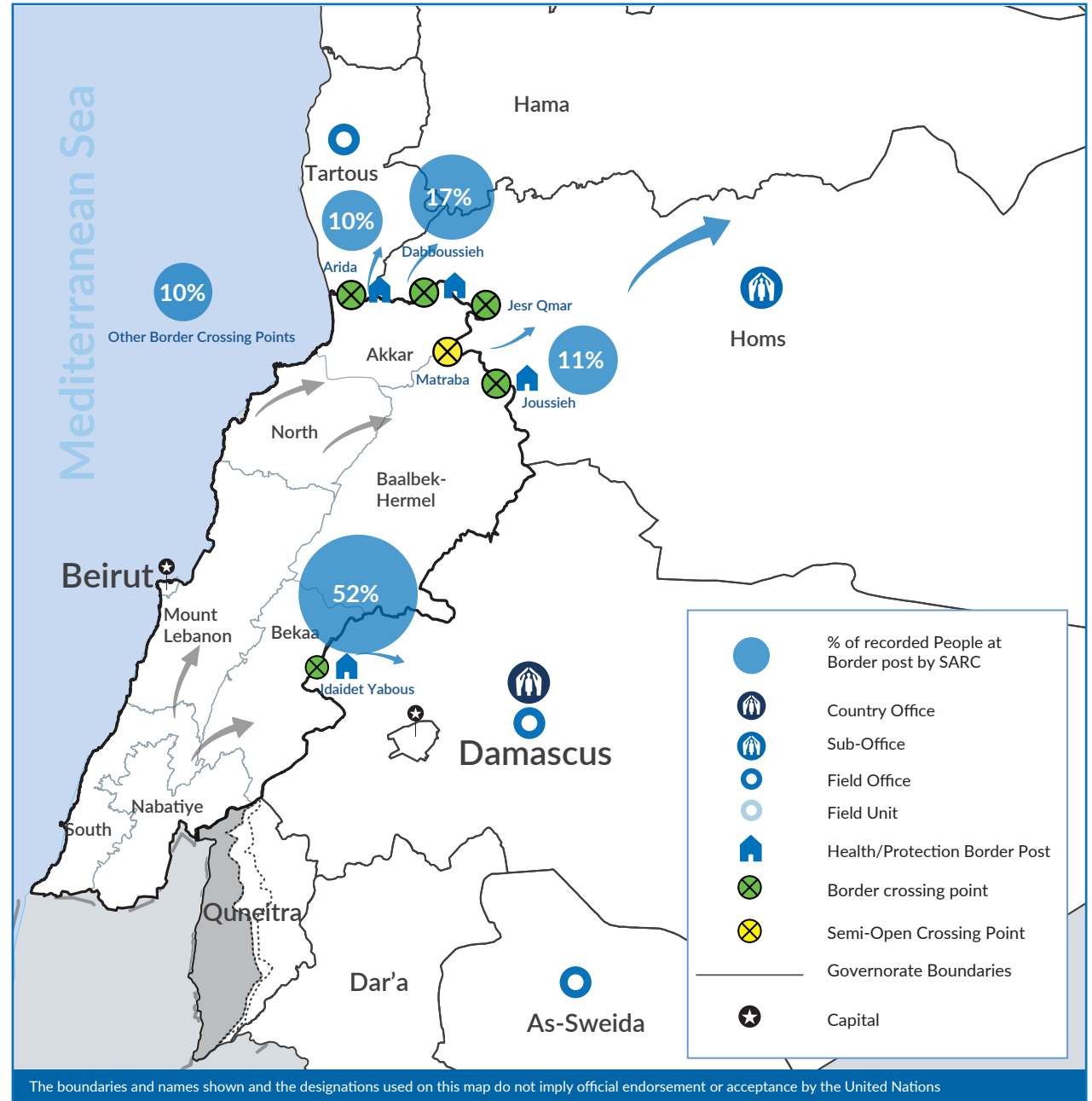
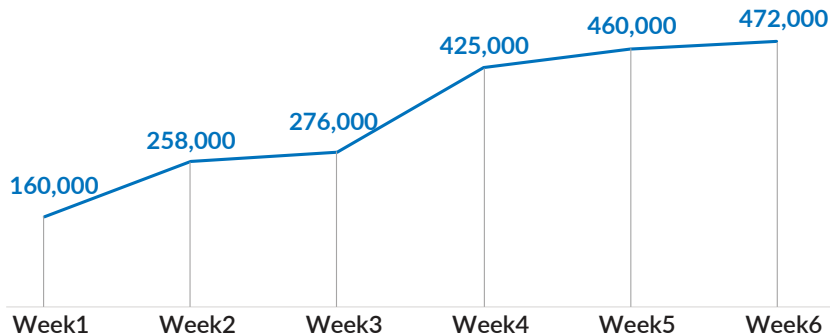
27%  
Lebanese



2%  
Other nationalities

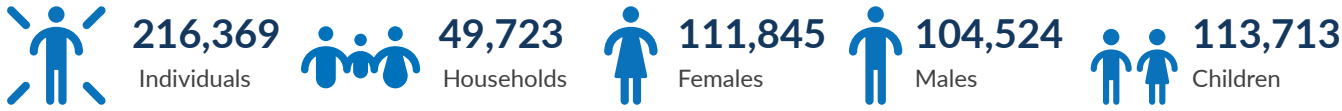
### Cumulative arrival trend by week in Syria

Since 23 Sep 2024

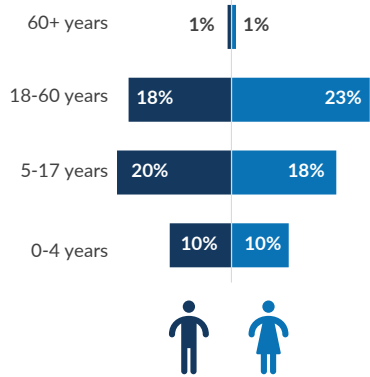


The boundaries and names shown and the designations used on this map do not imply official endorsement or acceptance by the United Nations

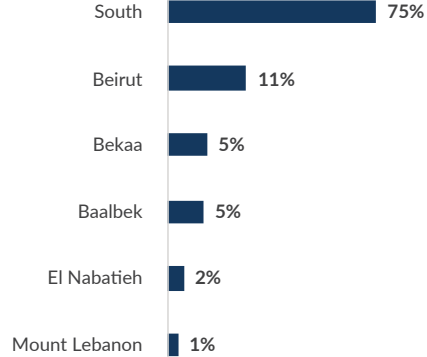
## Syrian Returnees



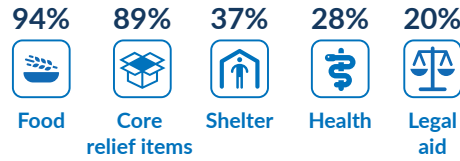
### Age/gender breakdown



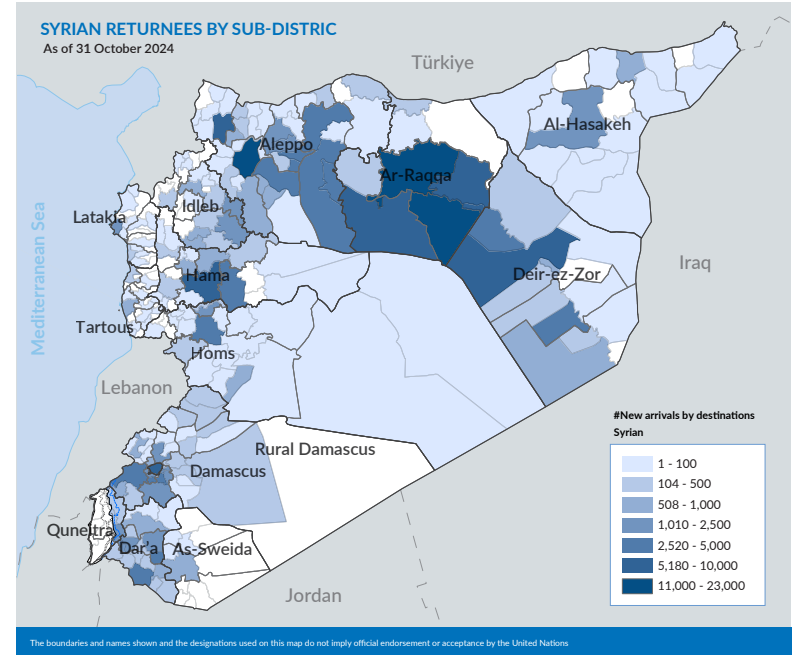
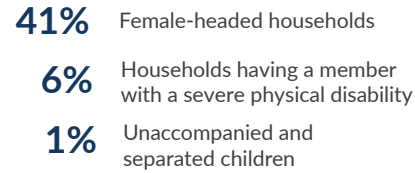
### Places of departure in Lebanon



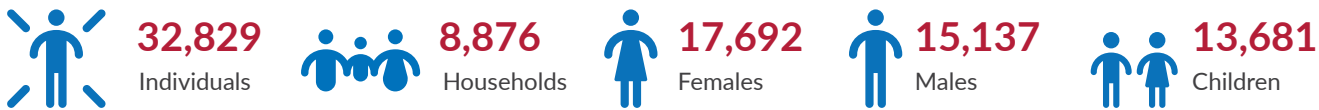
### Top needed services<sup>1</sup>



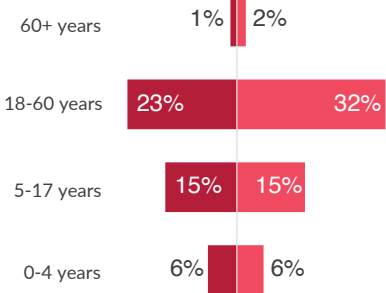
### Returnees with specific needs



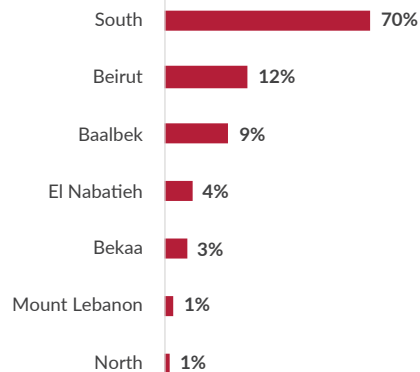
## Lebanese Refugees



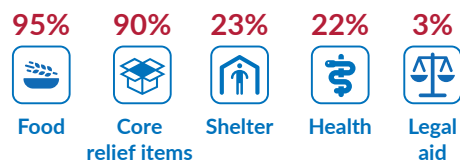
### Age/gender breakdown



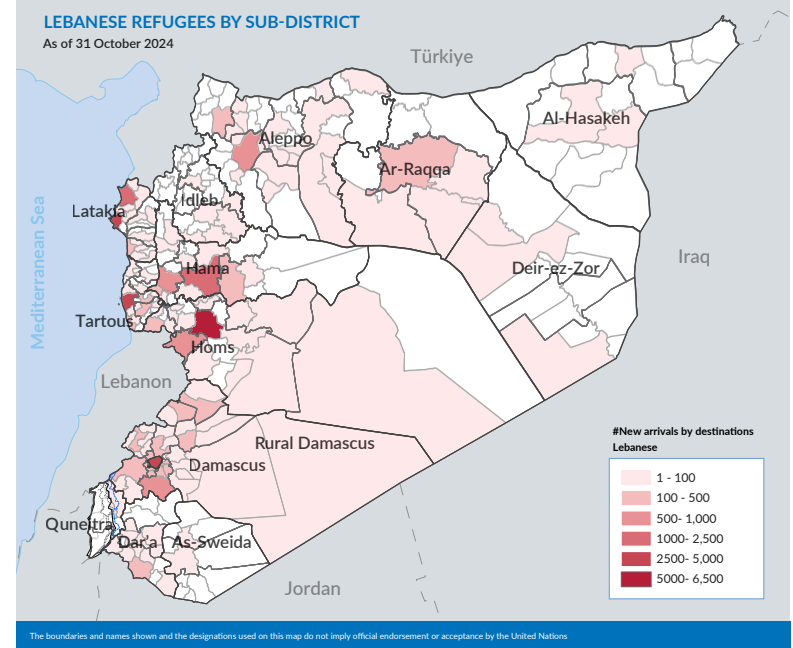
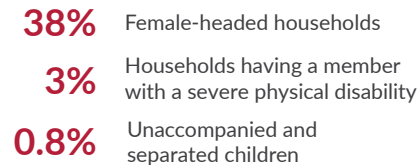
### Places of departure in Lebanon



### Top needed services<sup>2</sup>



### Arrivals with specific needs



<sup>1</sup>This resulted from a survey conducted with 49,723 individuals from Syrian returnee families

<sup>2</sup>This resulted from a survey conducted with 8,876 individuals from Lebanese refugee families