

OVERVIEW

UNHCR Field Office Genda Wuha was established in June 2023, following the war that erupted in Sudan in April 2023 and caused people to flee, with some entering Ethiopia through the Metema Point of Entry (PoE) in Amhara Region.

Two sites (Kumer and Awlala) were initially established in response to the influx. Following to the challenging security environment, the Government of Ethiopia decided to relocate the refugees and asylum seekers to a new site, Aftit, established in July 2024.

The development of Aftit has employed 'solutions from the start' as a vital approach to ensuring that refugees have access to existing services in the locality from the onset.

RRS, UNHCR and partners have worked with government structures and bureaus playing a lead role in the deployment/expansion of critical services, such as health, education and water systems, that cater for both refugees and host communities alike.



AT A GLANCE

Current population	5,597 individuals 3,211 households
Absorption capacity	12,500 individuals
Occupation level	45%
Opening date	July 2024
Area	45.6 hectares
Localization	Amhara West Gondar Metema Aftit
Region Zone Woreda Kebele	
Woreda population	174,177 individuals
Kebele population	5,060 individuals
Longitude	36.3475944
Latitude	12.7928056
Distance from the border (in kms)	30 kms
Name of the nearest urban center and distance	Genda Wuha (woreda capital): 8.5kms; Gondar (regional capital) : 160kms
Internet connectivity	No connectivity
Connected to national grid	No
Distance to national electric grid (in kms)	2kms
Drought affected	No

WHO DOES WHAT

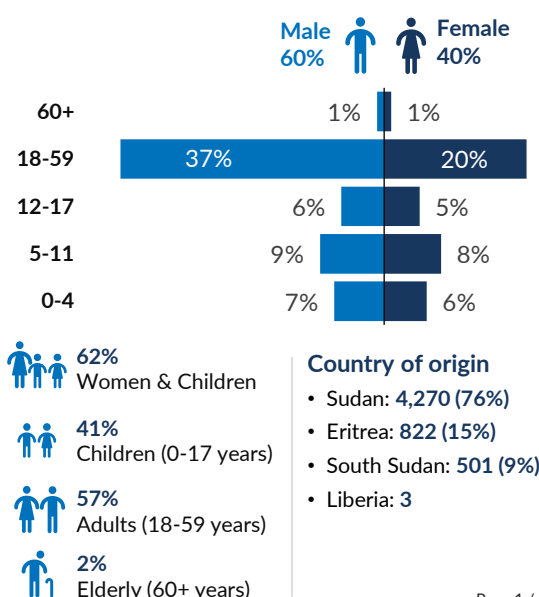
Total # Organizations	17
# government actors	4
# UN agencies	4
# International NGOs	4
# National NGO	5
#Development actors	0
Organizations per sector	
Coordination	RRS, UNHCR
Protection	RRS, UNHCR, RaDO, DICAC, IOM, ERCS
GBV and SRH*	DICAC, MTI
Child Protection	IHS, PIE
Education	Zonal Education Bureau, PIE, DICAC
Shelter / NFI	ANE, RRS
Livelihood	-
Health	Zonal Health Bureau, WVE, UNICEF, MTI
WASH	Zonal Water Department, PIE, CRS, IHS
Food Security	WFP, ANE
Nutrition	MTI, PIE, WVE
Energy and environment	-
Logistics & Warehousing	UNHCR, RRS, AAHI

*GBV and SRH: Gender-Based Violence and Sexual and Reproductive Health

COMMUNITY MOBILIZATION AND PERSONS WITH SPECIFIC NEEDS

# of refugee committees existing in the site	Seven (07) committees
<ul style="list-style-type: none"> Refugee Central Committee (RCC): 21 members (20m, 1f) Women Working Group: 6f Gender (Male) Ambassadors Committee: 12m Child Protection Committee: 12 (6m, 6f) Child Welfare Committee: 10 (6m, 4f) Complaint Feedback and Mechanism Committee: 20 [Refugees 15 (10m, 5f), Host community 5(3m ,2f)] Parent Teachers Students Association (PTSA): 7 (6m, 1f) 	
# active participants (male and female) in leadership/ management structures	83
# active female participants in leadership/ management structures	23
% active female participants in leadership/ management structures	28% (Standard : 50%)
# of unaccompanied and separated children	88
# of persons with disability	183

DEMOGRAPHIC






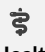




INFRASTRUCTURES ACCESSIBLE BY REFUGEES

Infrastructures	On site	Out of site	Comments
Primary Health care Centre		1	Aftit health center (solutions from the start)
Water Points	12	-	All water distribution points are emergency with water tanks connected to 6 faucets.
Security Post	2	1	On site is under construction
Vocational training centre	-	1	Genda Wuha Technical and Vocational Education and Vocational Training, TVET college (solutions from the start)
Child-friendly spaces	2	-	Temporary structures
Protection Desks	1	-	Temporary structure
Family latrines / communal latrines	35	-	One block of latrine has 5 stances(doors), currently 7 blocks are on the site and functional
Primary Schools	-	1	Aftit Primary school (solutions from the start)
Secondary schools	-	2	Kokit and Genda Wuha Secondary Schools (solutions from the start)
Marketplace		1	
Nutrition centre	-	-	Not available
Community center	1	-	Refugee-led initiative

SECTORAL INDICATOR MATRIX

This matrix is based on the most recent and accurate data available from UNHCR sector leads at the time of publication

- Acceptable
- Unacceptable
- Critical

Sector	Indicator	Standard	Current Value	Sectorial challenges
 Protection	Proportion of children under 5 years of age born in Ethiopia whose births have been registered with a civil authority. [SDG* 16.9.1]	100%	0% ●	- A total of 43 children under 5 years of age born in Ethiopia, none registered with a civil authority. - 812 individuals are pending biometric level 3 registration
	% of refugees and asylum seekers registered on an individual basis	100%	85% ●	
	Proportion of Persons of Concern with legally recognized identity documents or credentials	100%	34% ●	
 Shelter	% of households living in adequate dwellings	100%	0% ●	Insufficient local market for key construction materials and machinery parts has impacted both shelter and road construction.
	% of households living in family emergency shelter	0%	100% ●	
 Education	% of children enrolled in preprimary education	100%	92% ●	Refugee children compelled to travel long distance to attend secondary education at Genda Wuha host community secondary school 18 KMs back and forth travel from Aftit refugee site to Gende Wuha secondary school.
	% of children enrolled in primary education	100%	94% ●	
	% of children enrolled in secondary education	100%	78% ●	
	# of children enrolled in the national education system (Primary and Secondary). [GCR 2.2.1]	100%	90% ●	
 Health	Proportion of births attended by skilled health personnel. [SDG 3.1.2 Tier 1]	100%	66% ●	Frequent home deliveries and delays in accessing early postnatal care remain significant challenges.
	% of children aged 9 months to five years who have received measles vaccination	>= 95	90% ●	
 Nutrition	% SAM* prevalence among children aged 6-59 months	<2.0%	1% ●	- Lack of a TSFP* program for MAM* children and PLW* cases at the transit center posing longstanding challenge. - Lack of nutritional screening for new arrivals at Metema entry point
	% GAM* prevalence among children aged 6-59 months	<15%	9% ●	
	% Stunting prevalence among children aged 6-59 months	<20%	11% ●	
	% Anaemia prevalence among children aged 6-59 months	<20%		
 Energy and Environment	Proportion of PoC with primary reliance on clean (cooking) fuels and technology [SDG 7.1.2 Tier 1]	100%	0% ●	- Cooking stoves are still being ordered
	# of hectares of land reforested / rehabilitated in the last 24 months		0 ●	
 WASH	Liters of water received per person per day [emergency]	15	10.36 ●	- The repeated power outages at the water sources, where water is being trucking from, affect the water supply since the boreholes are connected to the grid.
	# of persons per latrines stances	50	159 ●	
 Livelihood	# of hectares of lands allocated to refugees for farming		0 ●	

* TSFP: Targeted Supplementary Feeding Programme | MAM : Moderate Acute Malnutrition | PLW: Pregnant and Lactating Women | SDG: Sustainable Development Goals | SAM: Severe Acute Malnutrition | GAM: Global Acute Malnutrition