

CAMEROON: LOCATIONS OF FORCIBLY DISPLCED PERSONS (November 2024)

2,122,687 TOTAL FORCIBLY DISPLCED PERSONS

282,843 CENTRAL AFRICAN REFUGEES

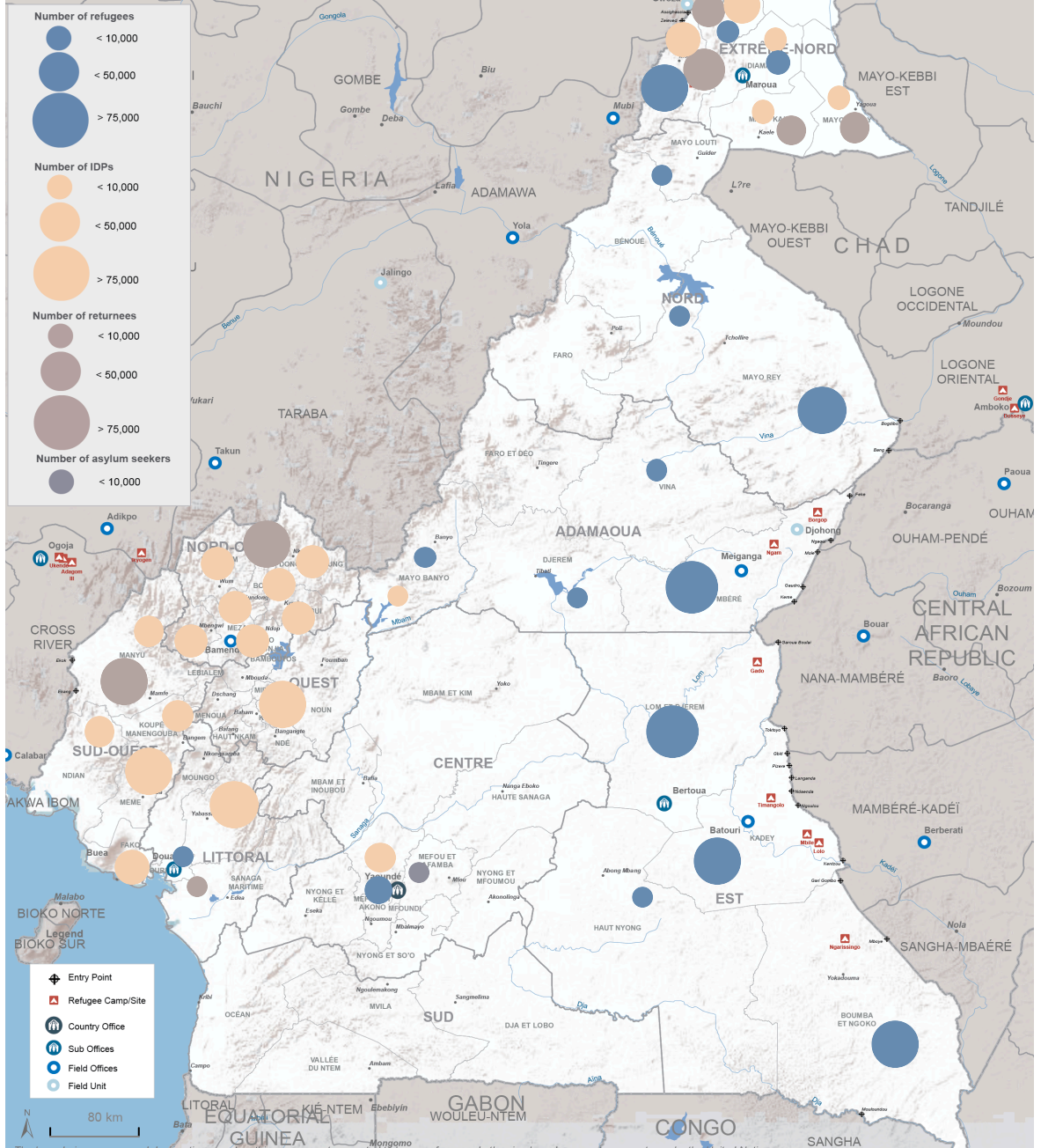
125,206 NIGERIAN PERSONS

3,249 REFUGEES OTHERS NATIONALITIES

16,070 ASYLUM SEEKERS

1,036,775 INTERNALLY DISPLCED PERSONS (IDPs)

658,544 RETURNEES IDPs



The boundaries, names, and designations used on this map are not warranted to be error free nor do they imply endorsement or acceptance by the United Nations.
 * Returnees & IDPs: Source: IOM, OCHA
 Refugees & Asylum Seekers: Source: UNHCR
 for more information, please contact Claudric DE KALAMBAK (nguenade@unhcr.org)